



Mawsley Villagers Association

Newsletter

October 2003

What does Mawsley mean to you?

Is it:

- ◇ A haven of peace and tranquillity
- ◇ A challenging and invigorating new community
- ◇ A pleasant place to live in the countryside with lots of open spaces
- ◇ A new house
- ◇ BBQ city
- ◇ A convenient place to live close to the M1, M6 and A14: with good rail links to London.

I don't suppose it's as simple as just one of these for any of us.

In the MVA we often talk about our Community—the way we would like to see it develop and how as friends and neighbours we can encourage this, how we can capitalise on it.

But a Community in that sense and a community of houses, streets and green spaces etc. are interdependent. Sure maybe in many developments too much emphasis is placed on buildings etc. but at the end of the day they do in part dictate the kind of community we become.

Looking around, and taking in comments from villagers, a few things come into view.

To start with we have a lot of space for comparatively few houses; far fewer than modern planning guidance would permit. This is evident in the many green spaces all over the village, often separating houses from the roads.

We have lots, correction, quite a few trees.

We have lots, yes lots, of shrubs (albeit many looking suspiciously alike).

So the basis is there to make Mawsley a green and pleasant environment.

But it's clear that we are going to have to keep the pressure on to achieve, and keep. it.

Hence we are asking these questions of the developers and of the local borough council:

- ◇ Who will own the open spaces once the village is completed?
- ◇ Who owns them now?
- ◇ What requirements are there, now and in the future, to maintain them? (i.e. replacing dead trees, mowing properly etc.)

so that we can put pressure on whoever we need to. We need to do this because, frankly, it's not looking that good at the moment, even allowing for the absence of splosh in recent months.

So whatever Mawsley means to you, it is likely that a green and pleasant environment is part of it. That's why we will continue to try to improve it.

Bob Littler, Chair, Mawsley Villagers Association



Mawsley Community School

Plans for the new village school have been brought forward because there are more pre-school and primary school children here than the planners had anticipated. The building work is already underway, between School Road and Scholars Row, and will be ready for occupation next September.

Report from Nick Owens, Chair of the Interim Governing Body

Our first task is to appoint a Head teacher and to make plans for producing a first class school for all our children.

There are 10 villagers on the interim Governing body but we would still value suggestions and ideas from the village community as a whole. We would welcome your views on the ideas set out below as well as your thoughts on school uniform (colours, style etc) and a school badge. Any children who would like to submit a design for the badge please feel free to be as imaginative as possible (designs to 4 Kemps Close by November 18th).

The School Ethos

The village of Mawsley is a new, fresh and innovative approach to new housing. It is not simply a group of people living in close proximity to each other; it is a community which wants to grow and develop. The school is an important part of that process. It is one of the main places in which people will come together and it is essential that it reflects the desire to create a welcoming, yet progressive environment.

This is what we want from our school.

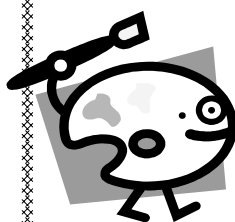
- ◆ Pupils will be encouraged to be inquisitive and creative through play and interaction with others and to have respect for their friends, classmates, parents and the community at large. High importance will be placed on **discipline** within a caring and embracing environment so that each child can take advantage of all that will be available to them in the school and within the local community. To that end, **the school will be one where the children will wear a school uniform.** The uniform will be one which is functional and affordable. It should also be one which the children wish to wear and feel comfortable in.
- ◆ Whilst **academic achievement** will be strived for there will be an inclusive approach. It is recognised that some children may find some subjects more accessible than others, however ALL children will be encouraged and helped to achieve the best that THEY can do. In addition, children will be encouraged to help each other, so that "the sum of the whole will be greater than the sum of its parts". **This community approach will be encouraged throughout all school activities.**
- ◆ Pupils will have access to **sports facilities** and it is not just academic excellence that the pupils will strive for. Personal and team based goals are equally important for personal development and these should be encouraged. The school is in a rural environment and other **outdoor activities** will help pupils to understand their environment and how we all impact upon it. Outdoor-based activities will further stimulate pupils, ensuring that they remain inquisitive and keen to learn.

- ◆ Although the school will not have any formal links to faith based organisations, pupils will learn about **religion** through the National Curriculum. They will also learn about other faiths and belief systems through honest discussions and learning activities, helping to ensure that prejudice and ignorance is not allowed to breed or take root.

No one child will excel in all activities, but the school will provide a haven where they can develop to the best of their ability; where strengths and weaknesses can be focused upon and where they can learn to respect themselves and others.

If you would like your views aired in Governors meetings please e-mail me, Nick Owens, at ndo@maidwellhall.co.uk or phone me on 791514.

Calling all children



Design a badge for the new village school.

Send your design to Marie Price at 4 Kemps Close by 18th November.

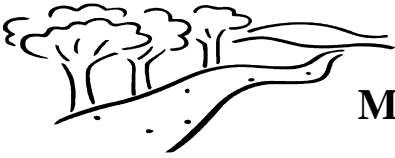
NEWS FROM OUR

As I mentioned in the last Newsletter, the School Interim Governing Body has now been established and held its first meeting on 30th September. The Interim Governors are:-

LEA representatives	Jim Harker Michael Harrison
Community Governors	Paul Bowman James Lumsden Caroline Caplan Bob Littler
Parent Governors	Elaine Cawthorne Sara Brown Lisa Smith Russell Walters-Morgan
'Staff' governors (ie with educational background)	Marie Price Nick Owens CHAIR
Clerk to Governors	Karen Shearsmith 01536 760644

The first task is for the new Interim Governing Body to recruit the head teacher and this is now under way. The next meeting will be held on 28th October.

JIM HARKER
County Councillor, Kettering Rural 01536 742245
jharker@northamptonshire.gov.uk



Mawsley Woodland

Work has begun on what was described on the original village plans as the Mawsley Strategic Woodland. This is a newly created woodland on the perimeter of the village at the David Wilson end.

A footpath is being dug, edged with wooden boards and laid with MOT, topped by self-binding gravel. Kerry Piper, who has been chasing up KBC and Wimpey on our behalf to get this work started, has been told that tree planting will take place this autumn. The soil will need to be turned and prepared and this she believes will start very soon.

A range of trees is promised, from windbreakers, like Populus, scrub and woodland margin plants such as Rosa arvensis and Acer campestre, dense woodland trees like Ash, Oak, Hazel and Birch and there will also be a wet woodland area adjacent to and over a former pond.

This project will please many people and already we have seen families walking along the newly dug path.

COUNTY COUNCILLOR

The main work just starting is the preparation of the county budget for 2004/5. Last year the total budget was £721.8m (gross) so it is a considerable task to analyse this and set it year by year. There is currently great concern nationally about the massive rises in Council Tax over recent years compared to inflation. Nationally the average band D County Tax has risen by 60% since 1997, while inflation has gone up by 24%. The County Council Tax has gone up even more – 74% increase in seven years. The solution is not, I believe, to replace it with a local income tax which would in itself have great inflationary consequences. The solution is for councils to have a much more prudent use of public money in the first place. I am currently opposing a suggestion to spend £450,000 on a glossy magazine to be sent to each household 12 times a year through the post. I believe that the people of Northamptonshire would prefer most of that sum to be spent on actually doing things instead – improving the services. I don't object to a newsletter say 3 or 4 times a year but a monthly magazine is a massive waste of money.

The Chief Constable's decision to transfer 24 rurally based police officers to Northampton is giving great concern elsewhere in the County. As a member of Northamptonshire Police Authority I believe we should be pressing Central Government vigorously to provide more funding for additional officers for this County. If Northampton needs more policing, the answer is not to take officers away from rural parts of our County to do it. It is to provide adequate numbers in the first place. Many people are especially concerned about the rising rate of anti-social behaviour and 'local' crime issues. I believe that the way to tackle this is for more officers to spend time on the beat, in their communities.

As your County Councillor, I am very happy to hear from you if you have any problems with County Council issues. At present I am working with the Villagers Association on tree planting and footpath issues. If you think I can help you, please contact me.

Mawsley Surgery

Mawsley Surgery has now been operational for 4 months and is beginning to build up a patient list with 90% of the patients living in the village.

Audrey Spence, our health visitor, provides child health surveillance clinics at the surgery but is also able to visit you at home. Regular weekly clinics are now being run. Please call the surgery to obtain more information.

Practice Nurses Helen and Becky have regular clinics. A smear clinic is run each Wednesday morning. Advice on general health matters such as weight management and smoking cessation can be had by making an appointment.

We also dispense medicines on a 48 hour turn around basis.

*****IMPORTANT*****

*****FUND RAISING EVENT*****

The surgery is now in the process of raising money to purchase a defibrillator. (This is the electric shock 'Stand Back!' equipment featured in many episodes of Casualty.) In a rural community such as Mawsley it is essential to have this very important life saving piece of equipment available for use in case of emergency.

One of our patients has kindly volunteered to organise a concert which will be held at St Andrew's Church, Old. If you play a musical instrument, can sing or do a recital of any description, please join in this very good cause to raise money
**FOR YOUR SURGERY IN
YOUR VILLAGE BY
TAKING PART IN THIS
VERY IMPORTANT FUND
RAISING EVENT.**



**THE FIRST MEETING WILL BE
HELD IN THE SURGERY ON
7th NOVEMBER AT 7.30pm .
PLEASE COME ALONG TO FIND
OUT MORE OR CALL THE
SURGERY ON 01536 791300 .**

Any other Fund raising events/ideas would be most welcome.

Angene Kane—Practice Manager

YOUTH NEWS

from Aidan Piper

Youth Group Committee

By the time this Newsletter reaches you the first meeting of the Youth Group will have been held and a committee formed. It is expected that it will have a young Chairman and at least 3 youngsters on the committee.

The Youth Group's role will be to represent young people's views to the MVA and to co-ordinate youth activities. More people, young and old, are invited to join in and anyone interested should contact me, Aidan Piper, on 790419..

Wednesday Night is Mawsley Night at the William Knibb Centre in Kettering

The Wednesday youth group is proving very popular and as a result of the numbers who are turning up and the age spread we will be splitting into 2 groups.

The younger ones, up to 15 or less physically able, will commence by 7.30pm with football and basketball while the older ones (we now have 18 year olds) are chilling out in the Zone (Internet cafe) with activities to be arranged. At 8.15pm it will be change around time and the younger ones can then be collected by parents or can stay on and chill out in the Zone or if physically up to it can join the big ones. I think a few of the younger ones 10/11yrs will leave earlier, which is fine:- parents should decide.

Parents seem to be sharing lifts and there are always 4 adults from the village to supervise and keep an eye on things, including Simon Wren providing football and basketball coaching, as well as Knibb Centre staff. I really do feel that all our youngsters should at least come along and see what is available for them and if they want tuition, time or a particular need it will be considered and is often available. We now have 3 budding drummers who are receiving lessons at the

Knibb Centre on Saturdays and will soon be annoying their neighbours with their practising in the evenings. They have been on ebay and found reasonably priced drumkits. We also have youngsters that are doing their Duke of Edinburgh awards who are using the Weds eves to fulfil this.

Some of you older ones should come and have a look.



Saturday Morning Football Club

Saturday's footy club is going very well with Simon Wren attracting a range of youngsters for footy skills training. Simon is a qualified FA coach and was formerly coach of Southampton's academy and has played in the football league. He is also a very skilful basketball player as witnessed by the Weds group. Our thanks go out to Simon and as the village grows this will be a very large and very talented group.

Come and see for yourself. Saturday mornings from 10—11am on the playing field. Football coaching, fun and small-sided games for boys and girls from 6 years upwards. £1 per child.



Christmas Scoutpost

Have your local Christmas Cards delivered by the Scouts and contribute to Scout Funds. Your cards will be collected from Mawsley and delivered within the village or to Kettering and the surrounding areas. (See list below).

Scout post is organised within the Kettering district by one of the Kettering Scout groups. 2nd Broughton group which Mawsley youngsters are joining, is one of the collection and distribution points. We will be placing Scoutpost boxes in the Bryant and both Wimpey Sales Offices and my porch (4 Fox Coverts) to enable people to post local Christmas Cards. A donation of 10p per card can be placed in the boxes along with the cards with all proceeds going to the scout groups. We will start early in December with the last collection at 6pm on 18th Dec and all cards delivered on or by 23rd Dec.



Cards can be delivered by Scoutpost to the following places only:

- Kettering, Barton Seagrave, Pytchley, Desborough, Braybrooke, Harrington, Rushton, Rothwell, Loddington, Orton, Glendon, Burton Latimer, Geddington, Grafton Underwood, Newton, Warkton, Weekley, Broughton, Little Cransley, Great Cransley, Mawsley.

Forthcoming Events

Bonfire & Fireworks Spectacular

**Saturday 8th November
on the Playing Field**



Pre-event Big Bonfire build at 1pm

bring bonfire material with you

Best Guy competition at 6.30pm

prizes for under 10s and under 14s

Fireworks at 7.30pm

Music and Cavorting until late!

Hot food van... Stalls.. Licensed Bar

**Tickets £10 to admit one
household.**

*Ticket sellers will call on you at
home.*

Bring your gazebos and set them up
in the afternoon in case of bad
weather.



Volunteers needed as:

Stewards First Aiders

Bar Tenders Food Servers

Also anyone wishing to set up their own stall to sell their
own goodies such as toffee apples and parkin.

Please email mvasc@mawsleyvillage.net or call Tony
Bagshaw on 790967 to volunteer your services.

Children's Christmas Party



**Sunday 7th December
Broughton Village Hall
2.30pm**

Tickets will be available
nearer the time. Please
contact Ann Whittaker
on 791163 if you are
able to help with this
event.

Watch the notice boards for details.

Christingle Service



**A CHRISTMAS INVITATION
for Saturday 6th and Sunday 7th
December**

On the afternoon of Saturday 6th
December we are inviting younger
children in the village to come, preferably with an
adult, to the Doctor's Surgery, Nethertown Way at
2pm (by kind permission) and to bring a large
orange. We are going to show them and help them
make a Christingle (see illustration).

Then on Sunday 7th December at 12 noon we would
like them to come with their Christingle and family
to the Duck Pond where we shall hold a special
Christmas Service featuring this unique symbol of
the Christmas Festival. Everyone will be welcome.

Accompanying the carols and hymns will be a band
from Kettering Salvation Army.

We will take up a charity collection for the work of
The Salvation Army and The Children's Society who
promote the Christingle theme, during the service.

For any further details please contact Gerald or
Mildred Peacock on 791496

Village Carol Singing Tuesday 23rd December

This is advance notice of a special Christmas
event—please put the date in your diary.

Carol Singers will take part in an early
evening candlelit walk around the
village stopping and singing at various
locations. We hope to receive
donations for a local charity yet to be
decided.

This will be followed by a get together
for refreshments, more singing and
celebration of the Christmas Story.

Get your singing voice in tune and be ready to join
in. Full details in the next Newsletter.



Further info. From Richard Smith (790421) or Gerald
Peacock (791496)



Christians in Mawsley

Gardening Club

The club has now met twice.

Just a reminder that there is an informal group currently made up from members of a cross section of denominations of the Christian Church, meeting on the first Thursday of every month from 7-30 – 9.00pm hosted in various homes in the village.

Our venue for 6 November is 7 Warren End, the home of Alison and Russell Walters-Morgan and on 4 December at our house 6 The Round.

We meet socially for a cuppa before we spend time on a Biblical theme and you don't need to belong to a church to come, everyone is welcome.

If you are interested in coming along just contact us, that is Gerald or Mildred Peacock on 01536 791496.

About a dozen gardeners have attended the meetings ranging from beginners who are not quite sure where and how to start their gardens to some with more experience. It promises to be a relatively informal group where ideas can be shared.

Marisa is an experienced gardener who has recently gained RHS qualifications. She is going to guide us through a wide variety of topics including design, choice of plants, propagation and vegetable gardening. We also plan to arrange visits to notable local gardens and Garden Shows and to make bulk purchases of basic garden supplies.

If we have taken to heart the discussion and instruction from our first meeting you should be able to spot a gardening club garden come the spring because it will be bursting with bulbs! Some of us are sceptical about how successful it will be but will plant hundreds of them nonetheless.

We have exchanged seeds and cuttings, discussed the village open spaces that Bob Littler refers to on the front page with a view to becoming involved in their beautification and we have written to KBC about the provision of allotments in Mawsley.

Do come and join us. Watch the notice boards for dates of future meetings or telephone Marisa on 790748.

These holiday language courses are all convenient for Mawsley.



Corby and Kettering Lifelong Learning Service Holiday Language Courses Spring 2004

All holiday courses run for ten weeks and cost £45 (remissions available)
They are suitable for beginners.

Holiday French	Tue	7.00 -9.00 p.m.	Montsaye Community College, Rothwell
Holiday Italian	Thu	7.00 -9.00 p.m.	Montagu School, Kettering
Holiday Spanish	Thu	7.00 -9.00 p.m.	Montsaye Community College, Rothwell

Please ring for other venues and dates.

Saturday courses at Montsaye Community College, Rothwell

Speak French with the Family! (For children 7-16 and their parents)	Now running (places available)	10.00 a.m.-12 noon	£4.00 per family
Brush up your French	15th, 22nd, 29th Nov.	9.30 a.m. -3.30 p.m.	£48
Speak French All Day!	28th February 2004	9.30 a.m.-3.30 p.m.	£16
Brush up your German	18th, 25th, 31st Jan. 2004	9.30 a.m.-3.30 p.m.	£48

Enquiries and enrolments 01536 712623

Harvest Ball

We cannot let this edition pass without mentioning the Harvest Ball. It was fantastic. Thank you to Kate, Catherine and Karen for all the effort put into making it such a memorable evening.

Two coaches whisked 100 ball-clad guests to Creaton where a Champagne reception got the evening off to a noisy start - lots of new people to meet with so much in common and the promise of a fun evening.



There were beautiful tables, a carefully considered seating plan and an excellent meal. £360 was raised for the Village Fund by Richard Smith's 'Heads and tails', we were superbly entertained by Colette's singing and then danced the night away.

The community singing on the coaches home kept the party going until the very last moment.

Well done! Thank you! See you next year!

PS. Found after the ball—a lady's adjustable black shoulder strap. (That's how good the ball was!) Please reclaim it from the editors.

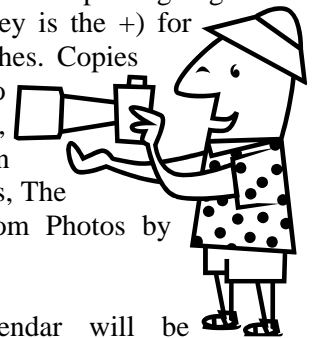
Four Shires 2004 Calendar

Were you at the Mawsley Family Fun Day in May? Did you or your children take part in the races at Warren End? If so you may find yourself featured on the 'June' page of the Four Shires 2004 Calendar.

The calendar has been produced using pictures entered into a local photo competition featuring Broughton, Cransley, Loddington, Thorpe Malsor and Mawsley.

It is an A4 calendar with a page for each month providing plenty of space for engagements. There is a local photograph on each page. As you would expect the scenes are mostly rural and are a good representation of the countryside and villages around Mawsley.

The price is £7.50 each with all the profit going to the Four Spires + Fund (Mawsley is the +) for the benefit of the five parishes. Copies can be bought from the two Pats at 34 Main Street, Bellamys Newsagents in Broughton, The Three Cranes, The Hare, The Red Lion or from Photos by Locals on 712888.



The competition and calendar will be repeated next year so get snapping the seasons.

MAWSLEY COMMUNITY CENTRE

Thank you to those who have offered some time to the various Community Centre Working Groups described in the last edition. Work is underway and the group members plan to recruit others as and when they are needed. This may take the form of a request for just a couple of hours input.

It is not too late, though, for you to offer your services to any of the working groups described in the last edition. Please contact Chris Cope on 790134, 7 Main Street (up until 2nd November) or Bob Littler on 791447, 12 Loddington Way thereafter, or return the reply slip to either address.



MAWSLEY COMMUNITY CENTRE

Please return this slip to Chris Cope at 7 Main Street or Bob Littler at 12 Loddington Way.

I/we would like to volunteer to assist with the Working Group.

My/our names

My/our address is

Telephone no.

Email: Date

Cancellation Notice

Due to circumstances beyond our control we regret that we have had to cancel the Ghost Walk and Halloween Party planned for tonight, 31st October.

We apologise for any inconvenience and disappointment but look forward to seeing you at the Bonfire and Firework Spectacular on Saturday 8th November.

(See page 5 for details)

Tony Bagshaw—Chair, MVA Social Committee

How does your village grow?

Thanks to the Sales Offices for these figures for total number of 'completions' as at 31st October.

Barratt Homes	6
Bryant Homes	18
David Wilson	92
J Barrett	0
Laing Homes	31
George Wimpey E Mids	88
George Wimpey S Mids	57
Total	292

Development is almost complete on the Laing and David Wilson sites and their Sales Offices will both be closed by Christmas.

This does not mean a reduction of activity in the village however. Planning permission has just been granted for the next tranche of houses—83 just beyond The Green and the Playing Field. It is likely that George Wimpey East and South Midlands will share this part of the development between themselves.

Contact Details

Please contact any of the following to make suggestions, ask questions or discuss current issues.

MVA Officers

mva@mawsleyvillage.net
Chair: Bob Littler (791447)
Vice-chair: Stuart Randle (791476)
Treasurer: Glen Somerville (790723)
Secretary: Richard Meredith (791539)

Cransley Parish Council

cpc@mawsleyvillage.net
Mawsley members are:
Cllr. Bob Littler
Cllr. Chris Winter

Kettering Borough Council

Cllr. Jim Hakewill (01858 467686)
James.hakewill@btopenworld.com
Cllr. Michael Harrison(01536 712888)
michaelharrison@kettering.gov.uk

Northants County Council

Cllr. Jim Harker(01536 742245)
jharker@northamptonshire.gov.uk

Newsletter Editors

Pat Downing and Pat Rowley (791881)
newsletter@mawsleyvillage.net

And finally.....

We hope you feel that this newsletter is keeping you informed of what is going on and planned in Mawsley. But we also hope that you do not feel that everything is in hand and set in stone. Please let us, or the MVA, know what you think about how things are going.

Please send us items suitable for publication. We do need some light relief from all the 'official' stuff. A selection of letters from our readers would be interesting.

The next edition will be issued on 12th December and we would like all articles, odes, jokes and pictures to be with us by 5th December. After that we are aiming at an edition for 30th January and 6 weekly thereafter.

from the editors.....Pat and Pat

Mums and Tots

Mums and Tots continue to meet at KLV 'Kids Kingdom' on Monday mornings at 10.30am. Do come and join us.

We are considering starting an additional session on Fridays, possibly at Barney Berzerk, in Moulton Park, Northampton. Please let me know if you would be interested in bringing your toddler to this group on a Friday so that I can assess the demand.

Thanks.

Sue Owens 791514

