



Mawsley Villagers Association

# Newsletter

September 2004

## Update from the Chair

**Samantha keeps asking me what the score is (shouldn't she know?) re the village hall and playing fields.**

Well the good news is that we are almost in a position where Wimpey are about to start building a village hall that is designed to allow us to run it profitably, to the extent that it is not a drain on village resources and activities can be provided at low cost for villagers.

That sounds great, but I haven't room to tell you just how much effort, time, determination and perseverance it has taken to get to this.

I will mention Chris Winter, who was the catalyst to unlocking a fundamental problem when everything was stalled a few weeks ago. By virtue of his persuasiveness (remember we don't hold the levers of power here – Wimpey are building it and Kettering Borough Council are the customer) he brokered an agreement that meets the objectives of all three parties. And I'll mention too the similar effort put in by key members of the Village Hall Steering Group, especially Gail and Stuart Randle. Apologies to others whose names I have not mentioned, but many thanks for your efforts. Add to that the willingness to show some flexibility from Wimpey and the Council and we have (almost ) got there.

There's more good news, regarding the playing fields. We persuaded the Council to commission consultants to review exactly what was needed to be done to the playing field to turn it into good quality sports pitches. Problem was that they estimated the cost of doing so at about £90,000. Well Wimpey have now confirmed that they will go ahead with the work as recommended.

Now we start on the business plan and fund raising to run and develop these excellent facilities that we will soon have.

Maybe one thing that comes through from the above is working together and making the most of the skills that we share. I've just finished reading a book about a lady who emigrates to France to run a vineyard. Commitment it is; selling up here and buying a house and vineyard with no previous experience. Within a very short time her husband falls ill and she is left to do it all on her own.

The striking thing about the book however is the way in which her neighbours just get stuck in and help; her lack of knowledge is seen as a reason for yet more help, not an excuse to walk away from the problems of a crazy Englishwoman.

Many of us have a similar vision for Mawsley; a village community that helps itself and each other. If we can achieve this we can do anything.

And that's what it's all about.

Isn't it?



**Update re police maps.** The police have difficulty finding us as Mawsley does not appear on the digital maps they use in the control room to direct officers to addresses. I can't say that anything more than a partial solution has been achieved so far - some areas of the village now appear on their maps. We will keep pushing for some form of interim solution for the remaining areas. Now chasing up the position as regards the Fire and Ambulance services too.

**Speeding:** many of you will have seen (felt) the new speed humps by the second entrance to the village that we requested Wimpey to install.

Unfortunately they aren't enough: at the MVA Committee meeting last week we agreed that more are needed – probably by Warren End and by the post box. We are aware this won't be universally popular, but we have been trying to get this speeding issue under control for over 3 years and in the end these kinds of measures have become inevitable. We are still looking at additional, less intrusive, measures to go with them.

**Bob Littler**  
Chair, Mawsley Villagers Association

## The serious stuff.....

### Wimpey Planning Application

**Just as they said they would Wimpey have appealed against the refusal of their application to increase the number of houses in the final building stage.**

Their application to increase the number of houses in the final stage by 138, resulting in a village size of 888 houses instead of the agreed 750, was opposed by the MVA on your behalf and rejected by Kettering Borough Council. Wimpey have appealed to the Office of the Deputy Prime Minister and there will now be a public enquiry. We will keep you informed.

Copies of the grounds for refusal and for appeal can be had from Richard Meredith or the Newsletter editors.

---

### Crime anyone?

There's currently quite a focus on the subject of crime within the village.

Whilst the Parish Council do receive a small amount of statistical information from the police, it is very difficult to know if this is crime affecting individuals and/or the builders' site stock/machinery. In order to be able to assess the trend accurately and work more effectively with the police we, (Mawsley Parish Council), would very much appreciate your input. If you have been the victim of a crime or attempted crime within the village, please let us know - all information received will be treated in the strictest confidence.

Please contact Bob Holland, 28 Main Street - 790349 - [BobHolland@btinternet.com](mailto:BobHolland@btinternet.com)

---

### Police Warning

Kettering and Corby police have asked us to remind all residents that open windows are an invitation to burglars. They have been concerned to see many homes with windows, especially on the ground floor, being left open all night. Their advice is to keep windows and doors closed and locked.

Also take keys, handbags and wallets upstairs at bedtime and never leave these items visible through a window or by an unlocked door.



If we had a Neighbourhood Watch scheme in the village we would have a system in place for being notified promptly by the Police of any suspicious activities in our area and we would have a network for getting this info round the village quickly. It has been shown that Neighbourhood Watch schemes do reduce crime in residential areas - meaning that it moves to areas which are not so protected, such as Mawsley. Please consider being involved in a Mawsley scheme.

If you would be prepared to come to a presentation simply to find out more, with no obligation, please contact Richard Meredith on 791539 or the Newsletter editors.

## Roads



### C31

If work began on time you will have discovered by now that the road between Mawsley and the A43 is not being totally closed while road works are carried out. That was the original plan but there was a 'change of heart' when Richard Meredith, Clerk to the Parish Council, 'reminded' the Highways Department and the various contractors involved that the preferred diversionary route to Kettering via Loddington would require motorists to make a 150 foot leap over the A14 where the Thorpe Malsor bridge used to be.....

The work, which includes road widening, strengthening of the edges and complete resurfacing, will now be carried out under traffic light control.

### Resurfacing in the village

The recent resurfacing of the main roads in the village has been carried out by Wimpey as a temporary measure to eliminate pot-holes and provide a smoother surface. Thorough resurfacing will not take place until the roads are prepared for adoption by the local authority and that will not happen until the village is more or less complete.

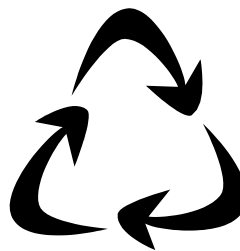
---

## Talking Garbage

Kettering Borough Council have recently announced the introduction of a re-cycling scheme throughout the Borough which will be implemented in three phases commencing in October of 2004 and completing in April of 2006. The MVA and the Parish Council are in discussion with KBC to establish when Mawsley will be brought under the scheme - initial indications are that it may not be until the final phase but we are pushing to be brought into the scheme earlier particularly as we have no re-cycling facilities within the village.

The scheme will give householders:

- A red 55 litre box for paper;
- A blue 55 litre box for cans, glass and plastic bottles (will this be sufficient: Ed);
- A grey 240 litre wheeled bin for cardboard and garden (not kitchen) waste; and
- Your existing 240 litre bin for whatever or whoever else may be disposed of.....



The extra capacity provided will mean that waste will be collected on alternate weeks, rather than the current weekly cycle.

As soon as we have more information on when Mawsley will "go live" on the scheme we will let you know!

---

**MVA Secretary** - The present Secretary will be standing down at the end of the year. If you are interested in filling the role, or if you require more information on what the job entails, please contact Richard Meredith on 01536 791539 or email [richard.meredith@eds.com](mailto:richard.meredith@eds.com).

# WELCOME TO MAWSLEY COMMUNITY PRIMARY SCHOOL



## **The teaching staff ready to welcome pupils.**

*Back row left to right:*

Amanda Botting, Michelle Harris, Brian Sellars (Site Supervisor), Jeanette Barrie, Karen Brown, David Wareham.

*Front row left to right:*

Helen Smith (Bursar), Elaine Wright (Head Teacher), Amanda Jeffords, Anne Pestell, Lorraine Perkins

The staff members who were not available for the photograph are cleaning staff: Maureen Quin, (who is also a lunchtime supervisor) and Wendy Andrews, and lunchtime supervisors: Victoria Keen and Kerry Gathercole

## Opening Day at Mawsley Community Primary School

Wow! We've just finished Day 1 at our brand new school and we are all buzzing with excitement! We have had a terrific day and hope the children have enjoyed their first day back after the summer holidays too.

Everything seems to have gone smoothly throughout the day, from our four year olds leaving Mum for their first day at school to our Year 6 children who will be prepared for moving on to secondary school at the end of the year.

It was lovely to see so many smiling, excited faces at 8.50a.m. eager to come into their new classrooms and meet new friends. It was also very encouraging to hear so many positive comments from parents about the school.

During the day children joined in with many activities which helped them to get to know others in their class, as well helping the teachers to learn about the children. We held our first school assembly in the hall and introduced all the adults. At playtime the children enjoyed playing with our new playground equipment and making friends. There were even a few Olympic stars of the future running round our playground track like Kelly Holmes!

At the end of the school day, once all children were safely handed over to parents, the staff retired to the staff-room to discuss our first day. Everyone agreed that they had really enjoyed their day. It was a marvellous start to our new school year.

We now look forward to working for many happy years ahead with our children and parents.

Elaine Wright  
Headteacher

Many thanks to Mr Leigh Marsden, General Manager of Alde International UK Ltd, a Mawsley resident, for providing every child in the school with a free water bottle.

The Mawsley Christians group invite you to a

## HARVEST CELEBRATION

For all ages

on Saturday September 25<sup>th</sup>

from 3.15p.m. - 4.30p.m

at Mawsley Community Primary School

- \* Children's Activities
- \* Refreshments
- \* Thanksgiving

# Youth Group News

## Ghost Hunt

Saturday September 17th, 9pm - midnight  
Brampton Valley Way

Meet at Arthingworth public car park to walk through the tunnels - if you dare - finishing with a BBQ (£2) at Draughton. Arrange to be collected from there at midnight.

Children and accompanying adults welcome. Entertainment on route by the *Mawsley Spooks*.

Ring Aiden to confirm numbers 790419

**Wednesday night at the Knibb Centre** is back.

The William Knibb Centre is in Montagu Street in Kettering. We play football and basketball and have access to the internet café and music studios. For 11 years to 20+. Parental help always welcome.

**Website Design.** We are able to book a regular Tuesday, Wednesday or Thursday slot for any Mawsley youngsters who want instruction in web site design and who would like to help develop a youth site for the village. Contact Aidan if you are interested in taking part.

**Saturday Morning Football** continues on the Astroturf at Kettering Leisure Village from 10 - 11am. Practise or learn new football skills with our own professional coach. Boys and girls of all ages are welcome. £1 per session.

**The activity weekend** has now been booked for 13th - 15th May 2005. It is a residential weekend for canoeing, orienteering and other outdoor activities.

**For more information on any of these events or to offer your help please contact Aidan Piper on 790419.**

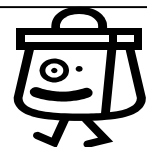
## Mums and Tots

This group continues to meet on Monday mornings. Do come and join us at **Kids Kingdom** at Kettering Leisure Village from 10.30 onwards.

We pay a special rate of £3.50 which includes a coffee for Mums and drink for children and because Kids Kingdom is almost empty at that time it is suitable for babies and children of all ages.

Contact me for more information on 791514.

Sue Owens



### FOUND

On Bank Holiday Monday on the under-7s play area a Disney character purse.

To reclaim please call Elaine Foster on 791242

## Youth Group Transport

The Youth Group work very hard to provide a wide range of activities for young people from the village. Unfortunately the majority of activities require transport.

We are currently looking at hiring a minibus from a local community group to take the young people to the William Knibb centre on a Wednesday evening and KLV on a Saturday. However, even with a low cost hire we need trained Minibus drivers.



**Does anybody in the village have a MIDAS qualification and a couple of hours to spare each week?**

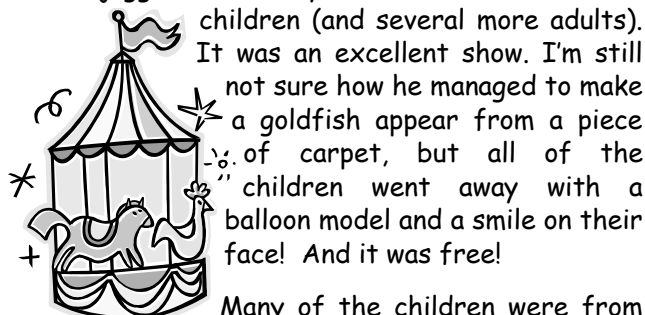
**Would you be willing to train to drive the minibus?**

**If you are interested, please contact Victoria Bell on 799196.**

## Mawsley's Magic Roundabout

Ever wondered what The Green just in front of the playing fields is? A roundabout, a green or just a problem for traffic? Well, one day last week we found out: it's a **MAGIC ROUNDABOUT**.

As part of KBC's summer playscheme the green became the venue for a great Magic show. Children's entertainer Mr Mudge - a magician, clown, juggler and uni-cyclist, entertained over 20 children (and several more adults).



It was an excellent show. I'm still not sure how he managed to make a goldfish appear from a piece of carpet, but all of the children went away with a balloon model and a smile on their face! And it was free!

Many of the children were from other local villages but it was great to see an event in the village. Hopefully next year we will be one of the villages chosen to host a playscheme throughout the summer holidays.

### FOUND

After the village picnic on the playing field, a small waterproof tartan blanket. Please contact Pat on 791881

# Social Committee News

**MAWSLEY  
HARVEST BALL  
23rd OCTOBER 2004  
At Highgate House, Creaton  
142 tickets sold - only 8 left**

£45 per head to include:

**Transport  
Reception drinks  
3 course meal  
Good night out!**

Call Karen on 790085

## **BONFIRE NIGHT SAT. 6TH NOVEMBER**

The Social Committee is trying to organise another bonfire night event with fireworks. They are still trying to obtain permission for use of a suitable site (the playing field will be inaccessible by then) and are having to take into account the new regulations about fireworks.

Make a note of the date - if we get the 'all clear' we will let you know. The charge is expected to be £10 per household as in previous years.



## **Village Picnic**

Who would have thought that we would need sun hats and glasses for the village picnic last Saturday? It was a scorcher.

It was a lovely afternoon with over 60 youngsters and even more grown-ups playing and chatting, with many staying on long after the official close.

The toddlers didn't need any organising - they hit the field and played. The rounders occupied many for the whole afternoon - it went on FOREVER! Thank you Theresa for organising this.

Apologies to everyone who wanted to enter the Boules competition - we neglected you and only one game actually got played. We do hope you can join us this Sunday when we will finish it off.

## **Out and About around Mawsley Top Tips Number 4**

OK - so the summer is all but over and we've had a lot of downpours BUT did you have fun? We did and judging by the feedback from neighbours and emailers ... so did you!

Many thanks to the people who have taken the time and trouble to feed back to me about their 'finds'. Please let me know of yours ... what have you discovered since you've moved in?

### **Ideas for walks, bike rides and days out**

Have you noticed that some very nice people have been hacking through the undergrowth along the marked footpath through Old Poor's Gorse to Old? You can walk to The White Horse in 30 minutes ish.

### **Good pubs and restaurants for eats and drinks**

In response to my request to compile a Top 10, suggestions are

*(Continued on page 6)*

## **CALLING ALL MAWSLEY MEN**

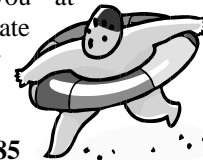
**Are you looking for a way you can get involved with the community and help raise village funds?**

**Well here's your chance.**

We are looking for at least 12 men to pose 'calendar girl' style for a 2005 calendar. We would like to feature you 'at work', for example as a landscape gardener, estate agent or even policeman. Hopefully your employer will want to sponsor your picture.

**So come on - don't be shy!**

**Call now for more details on 790085**



## **Boules Tournament Sunday 12th Sept. 3pm**

Weather permitting we will hold the Boules competition this Sunday afternoon on the playing field.

Please try to get there if you signed up for Boules at the picnic (see list) or come and join in even if you didn't. Please bring your sets of Boules if you have them and we will run several matches at the same time and continue until we finish. There are junior and all age trophies to be won. Further info from Pat Downing 791881.

These are the names we have already - \*denotes first match already played.

Andy	Kerry	Chris
Lizzie	Annabel	Gary
Chris	Isabella	Ken *
Sally	Bob	Linda *
Teresa *	Gracey-Lou	Susanna
Maggie *	Cliff	Tony
Ryan	Chris	Mark
Margaret	Elizabeth	Elena
Neil	Simon	
Karen	Emily	
Russell	Sophie	

## Snowdrop Planting Sunday 3<sup>rd</sup> October

Earlier in the year we received a large donation of snowdrops. Unfortunately it proved too wet to plant them all at the time.



We are going to try to plant the surviving bulbs on **Sunday 3<sup>rd</sup> October at 2pm**. If you can help please meet at the Loddington Way entrance to the village.

---

## Gardening Club

We spent a lovely evening at Coton Lodge near Guilsborough in July. We admired the two acre garden and its views and were then spoiled with tea and home-made cakes on the lawn. Back in Mawsley for our August get-together we visited five gardens to see different styles and approaches to new plots. There are certainly some lovely gardens here. It was good to have new villagers joining us on both occasions.

We usually meet on the last Wednesday of the month. Watch the noticeboard for details of forthcoming meetings or telephone Pat Rowley on 791881.

Some of the Gardening Club members will be going to see the **National Hedge Laying Competition** at Manor Farm, Deene on the morning of Saturday 23<sup>rd</sup> October. 100 hedge layers are expected to take part. The entry charge is £2. If you would like more information about this event please contact John Stevenson on 791307.

Are you wondering what has been happening about **allotments**? 25 of you so far have expressed an interest in having an allotment provided here in Mawsley. The gardening club has now handed this list to our new Parish Council and they will be negotiating with KBC and possibly local farmers to identify and acquire a site. We will keep you informed.

## Christians in Mawsley

This informal group of Christians of various denominations continues to meet on the first Thursday of the month for a social get together and the third Thursday for bible study. The venue for the September meetings is 8

Fox Coverts, and in October we will meet at 17 Hawthorn Avenue. Come and join us.



As always, for further information please contact Gerald or Mildred Peacock at 6 The Round or on 791496.

*(Continued from page 5)*

coming thick and fast. So far, the following have made it onto the shortlist and seem to fall into 2 categories – ‘special occasion’ and ‘good value for the family’.

### Special Occasion

The Hare at Loddington – huge portions

The Snooty Fox at Lowick – Lynne likes this place for special occasions and says the ‘fat chips’ are superb!

The Horse and Trumpet at Medbourne – a very special place in my opinion

The Pheasant at Keyston – can be expensive but very special food with friendly, efficient service

### Good Value for all the Family

The George at Great Oxenden – a favourite of ours

Thai Gardens at Rothwell – Debbie & Dave rave about it!

The Old Barn at Glooston – in the Welland Valley .... picturesque drive and good ale

The Woolpack Inn, Islip – Mark says good kids menu

The Samuel Pepys at Slipton – recommended by Lynne

Bennets at Bythorn – recommended by Lynne too!

The White Horse at Old – Tony says that the Sunday lunch is excellent (£3.95 for under 12’s and £5.95 for adults, extra for starters and puds if you want them)

The Bull at Arthingworth – mixed reports. Have you been? Any good?

The Pheasant at Keyston – great lunch deals Mon – Sat

The Golden Chef in Walgrave – OK ! .... so it’s a van on a Saturday Night but it’s very good and very reasonable!! At our house, 10 adults ate very well for £59.00 recently! Can’t be bad.

If you visit any of these before the next Newsletter, please let me know what you think so we can get a ‘Mawsley Merited’ list !!

### Garden Centres

Mixed feedback about garden centres .... everyone seems to have their favourites.

Karen loves Gaggini’s in Mears Ashby, Debbie likes Wyvale, Lynne says Poddington is excellent for plants although they can be a bit pricey – apparently the ex Head Gardener from Barnwell Manor works there and writes a column in The Evening Telegraph! Oooh!! Bosworth’s has a very good selection of pots at reasonable prices so, if you’ve forgiven them for the landscaping, you could go there (tee hee), but I still favour Coveys and so do Jo and Dan!

### Coming soon ....

Lamport Hall are holding a Craft Fair on Sept 11 and 12. If you go and it’s good, please let me know and we’ll spread the word.

Have you got any shopping tips for those of us new to the area? What’s in Market Harborough and Kettering? Food, Bargains, Specialist? Let me know of your ‘finds’.

Last, but not least, which of the local fayres and steam rallies have you enjoyed?

Don’t forget, If you have tried and tested somewhere recently and would be willing to share your find, please email or telephone Andrea Lucas on 01536 799066 or [andrea.lucas@virgin.net](mailto:andrea.lucas@virgin.net)

# NEWS FROM THE SURGERY

**NEW FEMALE GP** – We now have a very lovely female GP here at the practice by the name of Dr Eleanora Orpelli. Dr Orpelli will be running a morning and afternoon surgery on Mondays and Tuesdays. This means that Dr Oliver's clinics will vary slightly and he will now be running a session on Monday mornings only. He will no longer have a Monday afternoon session nor a Tuesday morning session. Please collect a revised patient leaflet from the practice which details these changes.

**PATIENT LIST SIZE** – the patient list size continue to grow rapidly with new patients from surrounding villages accounting for much of the recent growth.

**FUND RAISING TO BUY MEDICAL EQUIPMENT** – we have recently purchased a syringe driver for terminally ill patients who need morphine at home. The cost of this was partially funded by the practice and the remainder came from recent fundraising events.

**NEW SURGERY** – the purchase of the land from Wimpey is agreed and legality nearing completion. The planning application to KBC is imminent with a statutory 12 week timescale. The intention is to commence building work in February 2005 with us taking up occupation in January 2006.

**FLU CAMPAIGN** – this year's influenza and immunisation campaign will start here at the practice in early October. All patients at risk will receive an invite letter from this practice. For more details about flu vaccines, please telephone the surgery on **01536 791300**.

Angene Kane  
Practice Manager

## WORLD'S BIGGEST COFFEE MORNING IN AID OF MACMILLAN CANCER RELIEF 24TH SEPTEMBER

**Help Mawsley make every cup of coffee count**

Karen invites you to  
**10 Main Street** from  
10am - 12 noon

Cakes and raffle prizes  
would be appreciated.

Please drop them round on 23rd  
September or call Karen on  
790085.



Victoria would  
like you to join  
her at  
**6 Cukow Close**  
between

9.30am and 12 noon.

All the money donated will help Macmillan  
support people with cancer in our community

## PINK AEROBICS EVENT IN AID OF BREAST CANCER CARE



Wendy Osborne, our own  
aerobics instructor, will  
be holding a 'Pink  
Aerobics' event as part of the national  
aerobathon on Saturday 2nd October.

The aim is to raise £200K across the  
UK on that day for Breast Cancer Care.  
If you would like to take part or to  
sponsor someone else please contact  
Wendy on 791664 or see more details  
in the Mawsley Advertiser.

### Library Success

The Kettering |Mobile Library Service is  
delighted with the success of the visits to  
Mawsley. They say that after a slow start  
Mawsley is now one of their most  
successful stopping off points with more  
than 20 regular users.

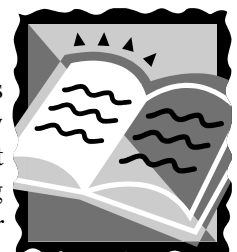
**The library parks by the post box on  
School Road fortnightly on Mondays  
from 3.40 - 4.10pm.**

**The next visit will be on Mon. Sept. 20th.**

For details of future dates through to next  
summer please see this edition of the  
Mawsley Advertiser.

### Book Club

This month's book is  
*Bonesetter's Daughter* by  
Amy Tam and next  
month we will be reading  
Clive James' *Silver  
Castles*.



We are an informal group which meets on  
the 2nd Wednesday of the month at 8pm for  
a glass of wine and chat about the book. Do  
come and join us. Ring me on 791277 for  
more information and our next venue.

Elaine Cawthorne

## Welcome Pack

Mawsley Villagers Association and KBC are keen that newcomers to the village are welcomed and informed about local services and facilities. They have prepared a Welcome Pack and hope that newcomers have found it useful. If you have recently moved in and have not received one yet please contact Mary-Rose Dolan Holland on 790349.

---

### *From the editors.....*

We are writing this on the first day of the new Mawsley Primary School and actually feel quite emotional about it. What has struck us most is that this morning, for the first time in the two and half years we have been here, there has not been a mass exodus from the village on a school day leaving us feeling like a ghost town. This morning the streets were full of families walking and cycling to school. Call us softies if you like, but we reckon we really can call ourselves a village now.

Enough of that! **The next newsletter will be issued in 6 weeks time on Friday 22nd October** and then again on 3rd December. The Mawsley Advertiser comes out on the same dates.

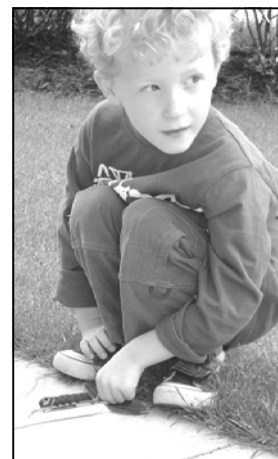
Please let us have any items for inclusion one full week in advance. We always welcome input from new contributors of any age. If you have a joke to share with us, something to say, agree or disagree with what the MVA are doing or have questions or suggestions to make please write to us, and we will pass your comments on or publish them, as appropriate.

Because of the Newsletter we meet a lot of people in the village and one of the phrases we regularly hear from you is 'We really love living here'. Why not send us one sentence explaining why and we'll print a selection of them.

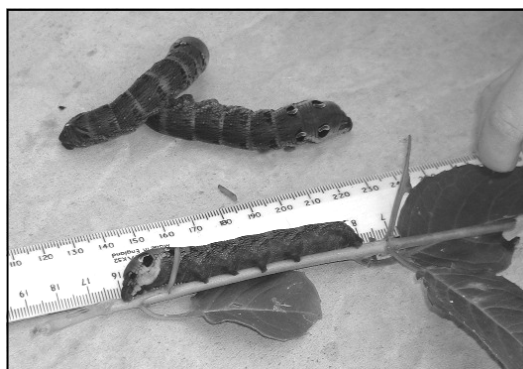
*Pat and Pat - Editors*

## Wildlife in Mawsley

Ewan Jones and his Dad, Mark, recently found the most enormous caterpillars you have ever seen on fuchsia bushes in their garden in Cowslip Hill. There were four of them, each 8 cms long and as thick as a finger. The most alarming thing about them is that they look like snakes. Mum, Helen, did some research on the internet and discovered that they are the caterpillars of the Elephant Hawk Moth. As well as having a snake-like head they also have a bit of a snout which is where the elephant bit comes from.



*Ewan coaxing a caterpillar onto our ruler*



The caterpillars are now in the process of turning into cocoons and if they survive the winter they should turn into adult moths in May to June next year.

From huge caterpillars to tiny ones - those which demolished Chrissie's twisted willow in July are now known to be Sawfly caterpillars. They are pale green and eat the leaves from the edge, holding their bodies at right angles as they do so. How are we so sure? Because lots of us have had unwelcome visits from them since then.

**If you have any wild life finds, questions or stories to share with us please contact Keith Powell on 790436 or at [williamsjea@aol.com](mailto:williamsjea@aol.com).**

---

## Contact Details

*Please contact any of the following to make suggestions, ask questions or discuss current issues*

### **MVA Officers**

[mva@mawsleyvillage.net](mailto:mva@mawsleyvillage.net)  
Chair: Bob Littler (791447)  
Vice-chair: Stuart Randle (791476)  
Treas. Chris Winter (790375)  
Sec. Richard Meredith (791539)

### **Mawsley Parish Council**

[mpc@mawsleyvillage.net](mailto:mpc@mawsleyvillage.net)  
Cllr. Bob Littler (Chair)  
Cllr. Chris Winter (Deputy Chair)  
Clerk: Richard Meredith (791539 or [richard.meredith@eds.com](mailto:richard.meredith@eds.com))

### **Northants County Council**

Cllr. Jim Harker(01536 742245)  
[jharker@northamptonshire.gov.uk](mailto:jharker@northamptonshire.gov.uk)

### **Kettering Borough Council**

Cllr. Jim Hakewill (01858 467686)  
[James.hakewill@btopenworld.com](mailto:James.hakewill@btopenworld.com)  
Cllr. Michael Harrison  
(01536 712888)  
[michaelharrison@kettering.gov.uk](mailto:michaelharrison@kettering.gov.uk)

**Newsletter Editors** Pat Rowley and Pat Downing (791881)  
[newsletter@mawsleyvillage.net](mailto:newsletter@mawsleyvillage.net)