



Mawsley Newsletter & Advertiser

December 2011

From the Editor...

Well, what a surprise! I had not expected to be doing this job again but find that after a four year gap I have really enjoyed the challenge of this issue.

It's no bad thing to have a change of approach every so often. Emma is part of a very young and active family and, as editor, has been able to convey the excitement that youngsters (and I include her in that definition) feel about village events. I am not, and what interests me is what makes this village tick. Who makes it tick? Are they finding it easy? Is it OK for me to take it all for granted? What are the problems? Should I be helping? Do they know what I think? Why haven't I told them? Have they actually asked me? Who are they and why are they doing it when they could have their feet up in front of the telly? Hopefully I'm not alone in wanting answers to these questions.

First and foremost the newsletter needs to be informative, so this is where you will find out what is going on and how it went. But I would also like it to be informative about why things are happening in a particular way and for it to be a forum for discussion and I urge you to use these pages, constructively, to let others know what you think about village issues. Let's set ourselves a challenge to have at least four contributions in each issue from people we've not heard from before.

I would like some help, please. Are you a budding journalist or reporter? Could you chase up and write about village stories that interest you and that might otherwise not get reported? Even if you don't think you can find the stories let me know who you are and when I get an inkling of something I'll ask you to follow it up. I also need a photographer, both to supply good quality pictures of village events but also to 'Photoshop' the less good quality pictures that the rest of us take and which need improving before publication. Emma is going to continue to seek out the family fun stuff and with a small team of writers we ought to be able to engage all sections of our community.

Please get in touch. I look forward to hearing from you.

Pat Rowley



The snow may not be as 'deep and crisp and even' as last year but Mawsley will certainly be very Christmassy.

- ★ The lights will be 'on' on the **Christmas tree** outside The Centre.
- ★ **Santa and his elves** will tour the village in his sleigh on the evenings of 8th, 9th & 10th December and he will be in his **grotto** at The Centre on Sunday 11th from 2 - 5pm.
- ★ There will be **Carol Singing** in the bar at The Centre on Wednesday 21st Dec at 7.30pm
- ★ Mawsley Church will be holding its **Christmas morning service** at 10am at The Centre
- ★ The bar will be open on **Christmas day** after the service from 12 noon until 3 pm.
- ★ **Boxing Day.** The bar at The Centre will be open from 2pm till 11pm.

More details on all these events inside.

Jane Twisleton, Centre Manager, would like to wish everyone a very Merry Christmas and a healthy and happy New Year

P.S. The Mawsley Newsletter and the Mawsley Advertiser have been produced as a combined publication for a full year now and this format is likely to continue. Our current title is a bit of a mouthful and certainly not catchy. Can you come up with a better, snappier name? All suggestions gratefully received. We'll use the best and publicise the runners up. Suggestions to the Editor.

Farewell; thank you; hello

It's all change on the Newsletter front.

Emma Brown announced in the last newsletter that she intended to retire as the editor after this edition; sadly, family reasons mean she is not able to carry on to this one. Emma has done a fantastic job as our editor, bringing a vibrancy and life to the Newsletter, together with stronger links to the younger families in the village than perhaps we had in the past. A gigantic thank you Emma.

Nonetheless she won't disappear completely; Emma will stay involved as our "roving reporter" focusing on family articles and issues.

In the last Newsletter we announced that Ron Harris would take over from Emma. Alas Ron is now not able to do so; albeit for the good news for him that recent greatly increased work commitments mean it simply isn't feasible for him.

So the new editor is hardly new at all ! **Pat Rowley** has stepped into the breach. Pat has managed the Advertiser since its inception; and was also the first Newsletter editor (apart from three early news sheets). So welcome back, Pat.

I did say in the last Newsletter that "the arrival of a new editor means the arrival too of new ideas and maybe a

new approach". In talking with Pat the MVA feels that we should build on the younger focus, and vibrancy, that Emma brought but add an increased focus on some of the issues facing the village. I know (not least from previous experience when she was the editor!) that Pat will pursue these in depth.

It's farewell and thank you also to **Tricia Taylor** who has organised distribution of the Newsletter for almost 4 years. I guess you never think how the Newsletter, plus all the inserts etc., get to you. There is a well-oiled machine, that Tricia has managed quietly and efficiently on your behalf, which ensures you get it on time even if some of the numerous door-to-door deliverers (and thank you to all of them also) are unable to make it on occasions. Many thanks for four years of unstinting commitment Tricia.

Fortunately we have been able to find a new Tricia to take over; and she is actually called Tricia - **Tricia Cottington**. So thanks to her for volunteering.

Finally a call to all. It's your Newsletter; any contributions are always welcome, whether on a regular basis as a reporter, or if a particular issue is buzzing around in your mind. Articles or a letter to the editor – it's up to you!

Bob Littler

India 2 Mawsley



Contemporary Indian & Bangladeshi Takeaway

OPEN 7 DAYS INCLUDING BANK HOLIDAYS
5pm - 11pm

Free delivery to Mawsley & surrounding villages
10% DISCOUNT ON COLLECTIONS

TEL: 01536 791108/791018

www.india2mawsley.com

**2 BARNWELL COURT, MAWSLEY,
NORTHANTS NN14 1GA**

The Village Retreat Mawsley

Our clients enjoy very private, leisurely and undisturbed beauty treatments....

- Waxing
- Eye Brow Shaping
- Eyelash & Brow Tinting
- Tantrick Spray Tanning
- Eve Taylor Aromatherapy Facials
- Collagen Facials by Marine Beauty
- Luxury Manicures & Pedicures by Creative
- Contour Body Wraps

CHRISTMAS GIFT VOUCHERS

*For a full list of treatments visit
www.villageretreat.co.uk*

Call Nettie on 07712 182231



Meet Davina MacDonald



I have lived in Mawsley for four years. I am married to Alan and we have four children aged between 5 and 16 years. I am pleased and proud to be on Mawsley Parish Council. My particular interests are in meeting the needs of disabled residents, being registered disabled myself, and in the provision of facilities and services for young families.

Phill Davies Flooring

Free estimates • Own carpets fitted
Underlay, gripper and door bars
supplied • Budget ranges & room
size remnants always available



Free underlay, gripper
and door bars with all
carpets purchased.

Contact Phill on:
01536 411495 or
07801 632265

philld Daviesflooring@gmail.com



News from the Parish Council

Another year draws to a close, which means we've just had Halloween and bonfire night, Christmas is round the corner, and the shops have been selling Christmas decorations for at least the last few months!

I'd like to say that Bonfire night was again a spectacular success. Our thanks and congratulations go to all involved in organising another great event.

We'd like to wish everyone a very Merry Christmas and a Happy New Year. With any luck, an early Christmas present will be a nice, smooth, final surface on the next phase of roads and pavements for Santa to drive his sleigh along!

Centre Car Park

Talking of tarmac, many of you will have noticed the fine finish to the newly surfaced car park at The Centre, replacing the old gravel surface. This was a job we felt needed doing before we entered into another winter, with the puddles, flooding and potholes that come with the bad weather. I'm sure everyone will agree it's a vast improvement. This was funded by the Parish Council, at a cost of £14,911.16, but we will be attempting to recoup some of the cost in negotiations with the original builders; on the basis we don't think the job was done properly the first time round.

Playing Field

We've recently secured QEII Field status for the village playing field, subject to the legal stuff getting sorted out between Fields In Trust and KBC. This is an initiative to create 2,012 protected public open spaces by 2012, in honour of the Diamond Jubilee. As a result, the playing fields in the village will be protected by Fields In Trust, as an open space for use by all. In these times of ever-shrinking outdoor facilities, this is a great result for the village. Go to www.qe2fields.com to find out more.

New Councillor

I'd finally like to welcome our newest Parish Councillor, Davina MacDonald, who I'm sure will help us become even more representative of the needs and requirements of the village. Welcome on board, Davina!

CLlr Peter Thomas, Mawsley Parish Council Chairman



Catriona Box

48 Long Breech, Mawsley, NN14 1TR
Tel/Fax: 01536 799 155 Mob: 07787 180 330
Email: catriona@optimiseservices.co.uk www.optimiseservices.co.uk

*Your profit is your reward
for taking the risk, let me
Optimise your profit potential*

- ✓ Accountancy
- ✓ Book-keeping
- ✓ Payroll & HR
- ✓ VAT / CIS / Year End Returns
- ✓ Budgets
- ✓ Cashflow
- ✓ Cash Chase
- ✓ Credit Control
- ✓ Business Health Check
- ✓ Business Administration

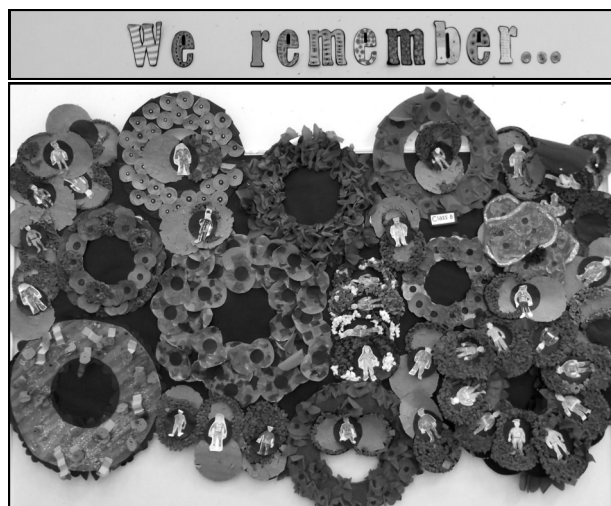
**Hands on
personal
approach
to your own
business needs**

Mawsley CP School Remembers

At the beginning of November the school joined forces with the Help for Heroes and BLESMA charities to commemorate Remembrance Day. At 11 o'clock the whole school gathered on the playground and formed circles in our classes to observe the 2 minutes silence. The children showed impeccable respect for the ceremony and the entire day and we are very proud of the mature attitude they demonstrated.

Later on in the day we invited the children's grandparents and members of the Mawsley community into the school to see various tributes that each of our classes had arranged. The children had written poems, sang songs from the 1940s and our Year 6 children even performed Sir Winston Churchill's famous speech.

After the class performances all the adults and children gathered on the playground for the release of their 'heroes' balloons'. The children had written prayers or wishes to our servicemen / women on cards attached to the balloons, with the school's address also labelled on the cards. Now we will wait and see if any are returned! The last time we arranged a similar event, one of the balloons ended up in Denmark, so we are hoping for a similar success!



Our wreaths on display in the school hall

We would like to thank the representatives from the charities for all their help, and of course the children who really engaged with the message and importance of the day. Hopefully lots of money has been raised to help a very deserving cause.

PS. Don't look now, but Christmas is coming....fast!!
Happy Christmas from all the staff at Mawsley CP School

Gareth Weston





**VISION HAIR
STUDIO**

HOME OR SALON VISIT

UNIT G21
MOULTON PARK BUSINESS CENTRE
RED HOUSE ROAD
NORTHAMPTON
NN3 6AQ
07881 612322
VISIONHAIR@HOTMAIL.CO.UK

HELP!!!

**Our Natural Healthcare
Business is exploding.**

If you would like a simple part-time, home based business and you are honest, ethical and would like to develop an extra income of £500-£1500 a month without compromising your present career or family life.

www.foreverwellbeing.org.uk

Call Louise Marks

Now on 01536 799163

Please tell advertisers where you saw their advert and if you receive good service from a local trader tell them about this Newsletter.

Advertise your business in this
Newsletter from £12.
Contact Pat Rowley on 01536 791881
or rowleypj@btinternet.com

MAWSLEY CHURCH

As we approach the end of one year and the start of the next it is a time to reflect and to plan. At Mawsley Church we reflect on lots of activities most recently the Remembrance service which again was supported by the uniformed groups and over 150 people attended in total.

Christmas is a great time to get together but also a time when some are very lonely. Mawsley Church is all about sharing life together and supporting each other. People often look for a little Space to withdraw from the business of life. Every week we meet in a number of places. Sunday at 10:30 each week in the Centre is the time most people expect for a church, but often other times are more convenient and we have a group meeting on Wednesday and Thursday evenings and also Thursday afternoon. This midweek afternoon is a welcome space for several people to chat, maybe do a craft activity but mainly to meet up with others with no particular agenda.

Prayer is also a high value for us and we believe in praying for the village and everyone who lives here. There is a new prayer group meeting when a few people pray for others. If you would like someone to pray for you or someone you know then send a request through the website or drop a note through the door (15 Loddington Way) It is confidential, you don't even need to give your full name. Maybe you don't pray yourself but would like someone else to. This is a service we believe we can offer the village.

For more info contact Richard or Mandy Priestley 790140 or www.mawsleychurch.net



Below are the opportunities to worship this Christmas in our parish.

10:30 @ The Centre

- | | |
|--------------------------|---|
| Dec 4th | SPACE on Sunday - a Cafe with children's activities and a quiet prayer room |
| Dec 11th | Family celebration - with children's groups |
| Dec 18th | FAMILY CAROL SERVICE WITH NATIVITY PLAY - children can join the cast on the day |
| Dec 21st
7:30pm | Carol Singing in The Centre |
| Christmas
Day
10am | Christmas Celebration (30 minute service, children bring a show and tell gift) |

At Cransley Church

Christmas Eve Nine Lessons and Carols
6pm



Get A Fresh, Bright Smile

The mawsley Dental Spa experience goes beyond the creation of your beautiful new smile. We want you to enjoy the inviting surroundings, luxury facilities and service from beginning to end. We aim to make sure that all the little details are just right so that you can relax, unwind and feel thoroughly pampered.

In addition to our regular dental checks & treatments, we also offer the following services:

WRINKLE RELAXING INJECTION

A simple injection that temporarily relaxes muscles preventing the formation of wrinkles whilst softening existing lines (Frown Lines, Forehead Lines, Crow's Feet).

1 Area	£195.00
2 Areas	£245.00
3 Areas	£295.00

RESTYLINE

A simple injection of restyline replenishes the lost volume and improves your looks by enhancing your facial profile, creating fuller lips and smoothing out lines and wrinkles.

Per syringe	£240.00
-------------	---------

THREAD VEIN

A simple procedure for the removal of red veins with instant results

Half an hour appointment	£175.00
--------------------------	---------

ZOOM and 'ENLIGHTEN WHITEN' £495

See special offer on Zoom



Z O O M

Special offer on
Zoom Whitening
Book before 31st Dec and pay
£295
instead of normal price of £495

School Road, Mawsley, Leicestershire NN1 1SN
Tel: 01536 799210/799211
Fax: 01536 799399
Web: www.mawsleydentalclinic.co.uk
Mawsley Dental Clinic is dedicated to using the best in cutting edge technology and anything which improves the service and quality of patient care

Professional
Whitening
System

Mawsley Coffee Club- end of year report



Preparing to shop at Poddington Garden Centre - Nov 2011

Our numbers have increased steadily during the year, mainly as a result of welcoming newcomers to the village.

Sadly, Doris, one of our members died in September and we offer our condolences to her husband, Thomas. Joan and her daughter Janet, moved to Northampton in August, but we are pleased to say that they still keep in touch with their Mawsley friends.

We have enjoyed several coffee mornings in members' homes during the year and have also enjoyed refreshments at 'Coffee at No 9' and the Centre. We have ventured out of the village to Beckworths at Mears Ashby and visited the new garden centre at Cransley, following which we returned to Mawsley with car loads of winter bedding plants. One of our members brought home a tropical banana tree, kindly donated by the owner; having correctly guessed how much he had paid for it

Additionally, we have enjoyed a summertime afternoon tea with home-made cakes in Molly and John's garden, and a cream tea at Jean and David's, when £80 was raised by a 'bring and buy' sale which has been donated to the Northamptonshire Kidney Patient's Association.

Elizabeth Thomas Massage Therapist

Fully qualified and experienced in :

- Sports Massage - £35
- Reflexology - £30
- Indian Head Massage - £27
- Swedish Body Massage - £30

These treatments can be extremely effective in preventing injury, aiding muscle fatigue and recovery, relaxation and overall holistic well being.

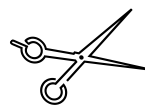
Treatments available every Wednesday at
Mawsley Medical Centre
School Road, Mawsley NN14 1SN

To book an appointment, please contact :

Elizabeth Thomas
Tel: 07734154016 or
lizt13@tiscali.co.uk



Hair by Chris



At Strands
78 High Street, Broughton

- *Friendly professional service for all the family*
- *Easy parking*
- *Evening appointments available*

Call Chris on 01536 791065



**VISION HAIR
& NAIL STUDIO**

HOME VISIT OR STUDIO -
THE CHOICE IS YOURS!

BRIDAL HAIR & NAILS
BRIDE
MOTHER OF THE BRIDE
MAID OF HONOUR
BRIDESMAIDS

07881 612322
UNIT G21
RED HOUSE ROAD
MOULTON PARK
NN3 6AQ



One Sunday afternoon in September, we visited Cransley Church for a 'Songs of Praise' event. Molly Shortt introduced a selection of member's favourite hymns and we sang a couple of verses from each; most ably accompanied by Roger Tame on his electronic keyboard. Molly also sang a hymn she had written. The afternoon concluded appropriately with well deserved cups of tea and a selection of yet more delicious home-made cakes! We know how to put on a good spread!

Our involvement in the community this year has included contributing home-made soup for the harvest festival at Mawsley Church. Earlier this year,

we were invited to Mawsley school when several of our members were interviewed by some of the older children, for their literacy projects. The results of their efforts were most impressive. We were also delighted to receive an invitation to the school to attend the Remembrance Day event in November. These invitations mean a great deal, especially to those of us who are not able to see our grandchildren regularly, as they live so far away.

Our outings this year have included a coach trip to Camden market, lunch at Gates garden centre near Oakham, a boat trip on Rutland Water, visits to the cinema and theatre and more recently lunch at Poddington Garden Centre. At the time of writing we are looking forward to a Christmas lunch at Walgrave and sharing small gifts from Santa's sack and also our annual 'coffee, carols and mince pies' event in December.

We try to provide a fun and varied programme during the year. Our members are either enjoying their retirement or are approaching retirement age. New members are most welcome to join us. Do get in touch with us if you'd like to find out more about the Coffee Club.

Molly Shortt (Tel: 790 781) and Jean Wilson (Tel: 799 490)

*Providing a quality service
in Mawsley since 2002*

IAN RAMSAY

QUALITY DECORATOR

*For all your interior & exterior
decorating*

Friendly, professional & reliable service

Interior & Exterior House Painting

Coving Floor & Wall Tiling Wallpaper Hanging

Skirting and Dado Flat Pack Assembly

Please ask for any other requirements not listed

Very Competitive Rates Satisfaction Guaranteed

For your free, no obligation, estimate please call

07899 814014 Or call at: 9 Padman's Close, Mawsley

WE LIT UP THE SKY!

My thanks to all those who helped with Bonfire Night this year.

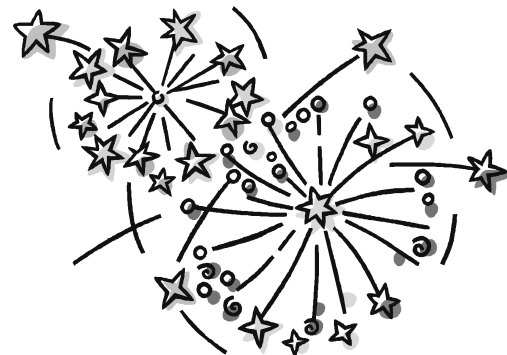
The fireworks were probably the best ever; and with an additional 200 adults attending compared to previous years Mawsley Bonfire Night's as an event is clearly gaining in popularity.

Special mentions to Wally Forsyth our firework maestro and his team of Sue Walker, Charlie Brown & Richard Harmon, and to Pat Downing for organising the Guy competition plus Anya Powell & Phil Orchard who both took advantage of the Barclaycard employee donations scheme for our benefit.

We made a promise to improve on the hot food offering and trust that this was well received by those attending. The night made a profit of £1,732, plus the donation from Barclaycard was £1,024 which all goes into MVA funds for the village.

I think most thought it good value for money and we hope to see even more of you joining us next year.

Martin Bentley



**BOOK ONLINE OR
IN STORE NOW FOR
ICE SKATING**
www.beckworthemporium.co.uk

**SKATE. SHOP. EAT.
HAVE FUN AND RELAX.**

ICE SKATING – NOW OPEN

- 25m x 16m real ice rink with lighting and music
- Separate VIP party rink • Ice Skating lessons • Ice Café

Book online at www.beckworthemporium.co.uk

CHRISTMAS FOOD SHOPPING

- Specialist Christmas foods and treats • Festive hampers • Wines and beers
- Christmas puddings & mince pies • Now taking orders for turkeys

CHRISTMAS GIFTS AND DECORATIONS

- A new and unusual range of gifts and natural decorations

CHRISTMAS TREES AND FESTIVE HOUSE PLANTS

- Freshly cut Christmas trees, four types, good selection of sizes
- Christmas house plants and arrangements now on show

RESTAURANT CHRISTMAS MENU

- Special Christmas menu (Monday to Friday). Three course meal for £21.95 – see website for menu. Call 01604 812371 to reserve your table

Opening times: Monday-Saturday 8am-6pm, Sunday 11am-5pm
Restaurant opening times: Monday-Saturday 8am-5pm, Sunday 9am-5pm
Ice rink open times: Every day 10am to 6pm (last session 5pm).
Closed Christmas Day and Boxing Day

Beckworth Emporium, Glebe Road, Mears Ashby, Northampton NN6 0DL
tel 01604 812371 email enquiries@beckworthemporium.co.uk
www.beckworthemporium.co.uk

BONFIRE NIGHT RAFFLE unclaimed prizes as follows:

India 2 Mawsley £15 voucher
pale green 70 (AW306712)

Tin of Quality Street
pale green 40 (AW306712)

Lego - **pink 399** (AW330126)

Crayola
pale green 279 (AW306712)

Mulled wine
white 75 (AW323636)

**Prizes can be collected
from The Centre.**

 **Howard Smith Paper
Commercial Print**

**'Thank you' to Howard
Smith Paper** for donating the
paper for this newsletter which
means that more of the
income from adverts goes into
village funds.

Inside the centre of The Centre

(Otherwise known as an occasional look at some of the larger issues we face in running The Centre.)

TILLS

A key topic recently has been what to do about replacement of the tills. The current ones are 5 years old, broken; and obsolete. However two new ones cost £3,000. Dilemma: do we replace them with like for like, spending money we can't really afford, or.....what?

You may think having touch-screen tills is a bit OTT, however they are crucial to our mission to be able to control the business - which after all is your business – really closely and well, as they enable effective monetary and stock control. (Our stocks are audited quarterly by an independent expert; results are consistently excellent). Of course as well our systems have to be 'ultra transparent and accountable' because we are a community venture and not a private enterprise.

We did come across a potential much cheaper alternative, using iPads and an app. Unfortunately the software simply isn't flexible enough to meet our needs – it is really written for restaurants, where there are far fewer till transactions. Many thanks to Mark Hart who explored this in depth for us, and then advised against.

So we have replaced the current ones, which will be written off over 3 years thus reducing the annual impact on our P&L.

COFFEE MACHINE

Next tricky issue is likely to be coffee machine. The current one when new cost £6,000 – good job we were given it free of charge. However this also is coming to the end of its life, so a replacement is likely to be needed soon. No need to spend anything like this we know; more in the region of £1,500. But which one? Which offers the best option of good coffee / tea; easy to clean; reliability; best cost? I wish we knew! Do you know?

EXPERTISE?

There are two reasons for writing this. Firstly because I feel villagers should be aware that running The Centre is not quite as simple as I know some like to think; but secondly – and more importantly – I hope that by drawing your attention to these kinds of issues you will see some of the things that have to be dealt with. We really do need and would welcome any help or expertise anyone can give us; so if you can help please get in touch.

Bob Littler




**SANTA'S SLEIGH AROUND
THE VILLAGE**

8th, 9th & 10th December
see MAD'S notice board in the centre
for when Santa will visit your street
also raising money for
Cransley Hospice



SANTA'S GROTTO

**Come and meet Santa
on 11th December
between 2.00 and 5.00 pm
At the Centre**



MUSIC MAKERS!

**Come and join in the Music Makers fun:
singing-movement-instruments-puppets
For babies to pre-schoolers**

NEW MAWSLEY - The Centre
XMAS SPECIAL - Wed 14th Dec 10.30am
Wednesdays 10.30am & 11.30am from Jan 2012

Also running at:
TITCHMARSH - The Pavilion, Thursdays - 10am
CRANFORD - Village Hall, Mondays - 10am, 11am & 2pm

**45-minute sessions only £4 per child
and £2 per subsequent sibling**

**Booking Essential
Contact Naomi Cooper
07815 293893; 01832 731953;
musicmakersnorthants@gmail.com**



**Facebook - Music Makers Northants
Music Makers birthday parties too!**

POLICE REPORT

I'm Martin Penhallow and I'd like to introduce myself as your newish PC for the Mawsley area.

I joined the Rural Safer Communities Team at Desborough in January 2011 and was allocated Mawsley as part of my beat area in June 2011. We currently have 8 PC's and 8 PCSO's plus a Sergeant working from Desborough and cover all the rural areas around Kettering, which includes Mawsley, Rothwell, Desborough, Broughton, Burton Latimer and Barton Seagrave. We also cover all the little villages in between, which makes the rural beat a very large geographical area.

I have to say that at the moment Mawsley is experiencing low crime levels and we would like to keep it that way. The following might help:

- Take care not to leave valuables on display in your parked cars on these dark nights.
- Keep your homes and businesses secured at all times even when you are present.
- Do not leave your vehicle running unattended to clear the ice or snow off them. This is not only against the law (it's called 'quitting'), but there is also the potential for the vehicle to be stolen and, of course, there could be health & safety issues as well. There were several vehicle thefts of this kind in the area last winter.
- Make sure that your vehicles are ready for the bad weather. Your vehicle should always be checked over at least once a week, but at this time of year it is very important to make sure that you keep an extra check on your vehicle's safety and that everything is working properly.

Here are my contact details: **Telephone 03000 111 222**

Email: **martin.penhallow@northants.pnn.police.uk**

The new non-emergency number for the police is 101

More info at www.northants.police.uk

WOLD FARM

☆☆☆☆ Silver Award



*Superior
Bed & Breakfast*

In large period farmhouse in
Old village

En suite rooms & family suite

Tel: 01604 781258

SANDRA

Clothing Alterations & Repairs

Ladies & Gents

Also Dressmaking

**SPECIAL OCCASIONS WEAR
BY SANDRA**

Heirloom silk Christening wear,

Bridal, Bridesmaids,

Communion Wear

7 Brambleside
Kettering
NN16 9BH

01536 521481

theWI
INSPIRING WOMEN

Mawsley Village WI

Christmas time again! Where did this year go? Have you seen the Christmas tree at the Centre? Well done to all the community spirited chaps who had a hand in putting it up. How lovely to be greeted with such a really seasonal sight.

Well, we have all settled into our new roles at WI and have got off to a great start with our fundraising. The 'Pudding Club' evening was a great success and thanks to all of you who supported our table and well done to Debbie Gill on winning our fantastic hamper.

Our next meeting is a members only event with us enjoying a 'Wartime Christmas' party with Amanda Pickard, a lovely young lady who really lives wartime and has some brilliant props.

January will be a relaxing time sampling Reflexology with Kirsty Wilcox who is based in Mawsley. Everyone is welcome to come along and learn about this enjoyable treatment. The guest fee is only £3 including refreshments.

Our new programme for 2012 is out now and also in the Notice boards. If you would like a copy please call 791186 and for any other information regarding your WI.

All the ladies of the WI would like to take this opportunity to wish everyone a 'Very Merry Christmas and a Happy, Healthy and Peaceful New Year'

Brenda Quinn

Pam's Craft Club

7pm at The Centre, Mawsley Village
28th Dec, 18th Jan, 8th Feb

Price £3.50

Demonstrator Suzie Candlin

VILLAGE CHRISTMAS TREE

As you will have seen we are now the proud owners of a Christmas tree outside The Centre in Mawsley. This was brought about by the kind offer of a tree from a village resident. To dig out and transport the tree required a lot of co-operation and we have a lot of people to thank for this part of the task. Steve Draycott really had his work cut out to dig the tree out, saving as much of the root system as possible.

Then came actually digging out the hole to put it in which was made a lot easier by a friendly digger driver who was re-surfacing the car park at the time! The trusty workforce (who came to be known as The Last of the Summer Wine Group) manoeuvred paving slabs into place and built frames to keep them in place until we could get the soil moved. Then they all shovelled earth like moles to fill the hole in until the tree roots would be at the right depth and we could drop it into the hole - with the aid of another friendly digger driver!

Why did you need slabs etc. you may ask? The reason is that the site of the tree is near to a couple of drain runs so we had to prevent the roots from doing any damage in the future. After an appeal on the Village Forum another kind villager donated some paving slabs he no longer needed and some bricks to surround the hole and these were duly cemented into place to make a neat edge to mow to. The slabs are covering the electrical work needed so that we can have lights on the tree.



So you can see, we had a lot of work which was made a whole lot easier by the brilliant response to the request for help. We also had the work eased with copious amounts of tea provided by Jane, Debbie and Sarah at The Centre – thirsty work digging!

We hope that you are all as pleased with our tree as we are. It will make a lovely focal point at The Centre year round but, of course, will be especially good at Christmas. The lighting up ceremony took place last Friday when, along with a group of local children, a jolly white haired old gentleman was present to assist in throwing the switch.

So, once again, a big thank you to all concerned for all their efforts.

Jane T and Vic Cope

P.S. The only downside of the whole project was finding that some wretched thief had stolen two of the paving slabs which had been donated!! How mean-spirited can you get? We just hope they are proud of themselves.

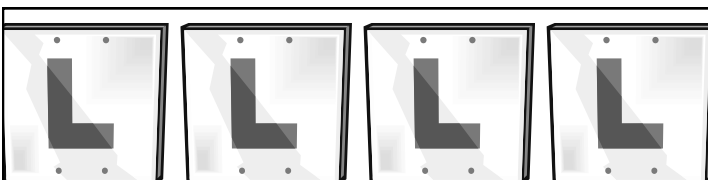
Property and Garden Services

Fully experienced in all areas of:

- Maintenance
- Painting & decorating
also
- Pressure washing
of paths, patios, decking &
general garden areas



Steve Draycott
3 Cowslip Hill
Mawsley Village
Kettering
NN14 1GU
Phone 01536 791681
Mobile 07804 120076



The Andy B Driving School

Learn to drive in a brand new Mini

Mawsley's only locally based driving School

Lessons Start from £20.50 per hour

Pick up from Home Work School or College

Call Me on 07738901858 or 01536 799583

www.andybdriving.com



Quality Time

Your guide to all that is fun filled
and family friendly in Mawsley.

REMEMBER, REMEMBER THE 5TH of NOVEMBER!

Two of my children are a still a little nervous about fireworks but, on Saturday 5th November, we braved the cold in our wellies, hats, gloves and scarves and went to The Centre to join in the firework fun! The children bought glow sticks from the fabulous Hart family and the grown ups bought a little liquid warmth from the fantastic bar staff, before we found a space to stand and watch the big event.

The countdown began and my children held their breath with hands over ears - just in case! Their looks of amazement said it all. Martin Bentley and his team did a tremendous job and we would like to say, on behalf of all who attended, **THANK YOU.**

Fears conquered, glow sticks waved, sweets guzzled and chips scoffed, we went home a proud and happy bunch. Proud, not just because we managed to stay for the entire duration of fireworks, but also because Mawsley was a wonderful place to be that evening. We were proud to live here, be a part of this superb event and be surrounded by family, friends, neighbours and familiar faces all laughing, smiling and sharing the fun.

If you didn't make it to the firework display, plan to be there next year because I can honestly say you missed a bit of Mawsley magic.

Emma Brown and family

Happy Birthday to
Carolyn Henson



All our love from
Kaz, Shannon, Shauna
and Victoria
xxx

Happy 40th Birthday
Clive Hodges
28th December
Officially OLD!



All our love
Karina, Shannon,
Shauna and Victoria

CELEBRATIONS!

Happy 2nd Birthday Emily
On 12th December
Wishing you a very special day

Lots of love
Mummy, Daddy and Poppy
xxxx



Happy 8th Birthday
Eva-Mae
With lots of love from
Mummy, Daddy and Sienna
xx

Music Makers Christmas fun!

Wednesday 14th December 10.30am

Book your child's place for music, fun and festivities .

Please see the advert for more details.



Snow White and the Many Dwarfs

Rehearsals for the MAD panto are now in full swing!

Performances on Saturday 4th and Sunday 5th February.

Tickets £4 - on sale in January.



***Congratulations and
huge thanks to
everyone who took
part in the
Friends of Mawsley
School
Christmas Fayre.***

.....Quality Time

The Christmas quiz and raffle draw will take place on Thursday 22nd December at 8pm in the main hall.

This year the Christmas raffle is raising money for the Northamptonshire Kidney Patients Association. Details of all prizes are on display in The Centre and squares are now on sale in the bar.

The Centre at Mawsley

At the Heart of your Community

WHEN FRANKIE MET ROBBIE

JAMES REYNOLDS **MEL PEAKE**

"THE MOST SUCCESSFUL SHOW WE HAVE EVER STAGED"
LETTERWORTH COLLEGE
★★★★
"BRILLIANT VOCALS & GREAT HARMONIES"
LOVE LITTHAM MAGAZINE
★★★★
"MANY SUGGESTED IT WAS THE BEST THEY HAD SEEN"
CHEVYNE WALK CLUB NORTHAMPTON

THE MUSIC & SONGS OF FRANK SINATRA & ROBBIE WILLIAMS
★★★★
A COMICAL MUSICAL FOR THE WHOLE FAMILY
★★★★
LAS VEGAS VIA KNEEDWORTH TO THE ALBERT HALL

FRIDAY 16TH DECEMBER 8 PM
The Centre at Mawsley
Tickets available from
01536 799528 **£10.00**

www.frankieandrobbie.co.uk www.thecentreatmawsley.co.uk



The December drink promotion is a free standard whiskey chaser with every pint of lager or beer purchased in December.



**New Year's Eve
Family Party**
8pm until 1am
Disco and buffet

**No charge, no tickets
required, just turn up.**

**The Centre has
been open for 5
years.**

Come and
celebrate in the
bar on
**Wednesday
14th December**
from 9pm.
Half price drinks
from 9pm until
10pm.

Children in Need – a massive thank you to everyone who turned up to support our tea party for Children in Need. The event saw The Centre, Mawsley Primary School and Mawsley Day Nursery working together to raise £77.32 for Children in Need. A special thank you to the children from the Pupil Parliament at Mawsley School who baked and sold cakes and sweets and ran competitions at the event.



Mawsley Baby and Toddler Group

Thursdays from 9.30am until 11.00am at The Centre.
£1.50 for the first child and 50p per child thereafter.

**We have toys, books, play dough, craft,
a singing session and a snack.**
Tea and coffee can be purchased at the bar.

**The Children's Christmas party is on
Thursday 15th December. £2 per child.**

**Father Christmas will visit with a present for every
child.**

**We will not meet on Thursday 22nd or Thursday 29th
December. We will meet again on Thursday 5th January
2012.**

For more info call Sarah Hart - 790517



Bumps and Buggies

**Every Monday from 9am
in the bar area at The Centre.
50p per week**

**Please join us for a cup of tea
or coffee and a chat whilst the
children play.**

**We will not meet on Monday
19th or Monday 26th December
2011 or Monday 2nd January
2012.**

**We will meet again on
Monday 9th January 2012.**



1st Mawsley Scout Group

Busy Beavers!

The Beaver Scout Motto is "FUN AND FRIENDS" which we hope we are still achieving. We have been busy working to achieve the Healthy Eating Activity badge, and the Beavers got to try a variety of healthy snacks, different fruits in fruit salad and design and build their own healthy sandwiches! Seems that natural yogurt wasn't a favourite though!

We then moved on to our Faith Activity badge and our Promise Challenge Badge, which has allowed the children to visit the Buddhist Centre at Kelmash and learn about the offerings given to Buddha by creating a small shrine to see how it is done, and then to act out a play on how Buddhism started. We have also looked at what the Beavers have worked hard on and where they have helped others, stories with morals and prayer writing, which we linked in with Remembrance Day, and some of the Beavers, who took part in the Remembrance service and parade, read their prayers out during the service at the Centre.



And finally we would like to say a big well done to Freddie Webster, Alex Lauder, Eva-Mae Hart and Kallie Bauckham, (above) who in the past two years have all worked very hard both at Beavers and in their spare time to achieve all 6 challenge badges available to Beavers and have been awarded their Chief Scout Bronze Award. We hope you are as proud of our Beavers as we are.

All of the Beavers wish everyone a Happy Christmas. And we look forward to welcoming our Beavers back on the 12th January 2012. And if anyone would be interested in becoming a Beaver Scout Leader (subject to CRB checks) we would love to hear from you.

plumbing & heating

P. VINCENT

Local and reliable Gas Safe registered
Heating Engineer

- Boiler installations, servicing and breakdowns
- Bathroom installations and general plumbing
- Landlord certificates
- No fees for estimates
- See Mawsley Forum for customer references

*All work insured, guaranteed
and delivered with care*

Call Paul at Mawsley Village on:
07838 191617 or 01536 791597



Hawk, Kingfisher and Kestrel



White Knight Decorating Ltd

37 Crescent West, Kettering, NN16 8AB

Tel: 01536 312572

Mob: 07967 235744

Email: j.white137@btinternet.com

Formerly J.White Decorating

For all your decorating requirements
From a quick freshen up to a 5 star
finish

Inclusive of Tiling. Coving, Hidden
trunking for wall mounted TV cables
And repair plastering.

Friendly and trustworthy service and
advice

Free Quotation with no Obligation

Active Scouts!

Numbers in scouts continue to rise and have increased from 14 Scouts in November 2010 to 24 Scouts now.

This term the Scouts have completed their "Creative Challenge Badge" which included making model Campsites, Wood Carving, and constructing model Giraffes from spaghetti and marshmallows (you can imagine where the marshmallows were disappearing to!). We have been on several night hikes which have involved fire and shelter building as part of our "Survival Challenge Badge" and have learnt some basic first aid for the "Emergency First Aid Badge".

The scouts entered a Guy into the Village bonfire night guy competition and were rewarded for their hard work by winning fourth place.

The scouts took an active part in the Remembrance Day Parade helping to assist in setting up the hall and handing out the Orders of Service to the congregation as they arrived. Then 5 scouts read to the congregation about the history of Remembrance Day and what it represents. One did the Bible reading with two further Scouts

lowering and raising the flag on the Green as part of the two minutes silence.



Back in May some of the Scouts and Beavers took part in a sponsored cycle ride at Brixworth for the Andy Bull Cancer Trust and we were proud to be joined by the Beavers and Cubs recently to hand over a cheque for £600 to Andy's Dad. (See below)

All of the Scouts wish everyone a Happy Christmas. And we look forward to welcoming our Scouts back on the 10th January 2012.

Andy and Colin



It's that time of year again!!

2011 Christmas card delivery by the Scouts Cost 20p per card

Post your cards from December 1st Last post December 14th

Scoutpost collection point – The Centre at Mawsley.

Please put your money in the box with the cards

Delivering to: -

Barton Seagrave	Desborough
Braybrooke	Geddington
Broughton	Grafton Underwood
Burton Latimer	Isham
Cranford	Kettering
Cransley	Little Cransley

Loddington
Mawsley
Newton
Old
Orlbury
Orton

Pythley
Rothwell
Rushton
Walgrave
Warkton
Weekley

Address cards with: -

Recipient's name
Number of house/Name of street
Town
Postcode (if known)

Incorrectly posted or addressed cards will be kept until 1st January 2012 if you would like to retrieve them

Message from Taylor Wimpey

Public works are progressing well

Good progress is being made towards the completion of public facilities and infrastructure at Mawsley Village – both above and below ground.

Taylor Wimpey's ongoing programme of remedial works to **roads, footpaths, kerbs and streetlights** is continuing, with the School Road and Cowslip Hill areas of the village on course to be finished off before Christmas.

Mawsley's remaining roads and pavements are due to be completed as the final phase of development is concluded by summer 2012, subject to the local builder finishing his work to schedule.

Elsewhere, Taylor Wimpey has now completed work on the **storm water lagoon** located to the north of Roman Settle. This has been necessary in order to secure the adoption of Mawsley's surface sewer network by Anglian Water and now the adoption process is set to begin.

Negotiations are also going well with Kettering Borough Council regarding the **transfer of ownership of public open spaces** around the village and it is hoped the discussions can be concluded within the next couple of months, enabling the local authority to take control of these areas.

Finally, there's more good news to report as Taylor Wimpey has now finalised the locations of **Mawsley's bus shelters**. The housebuilder has made a commitment to Mawsley Parish Council to transfer land for these to be constructed in the very near future.

As always, Mawsley residents can continue to report local issues such as potholes, raised ironworks and broken streetlights directly to Taylor Wimpey. Please contact Engineering Manager Colin Radford on 0116 281 6403 to advise of areas requiring urgent attention.

Taylor Wimpey would like to wish everyone in Mawsley a very merry Christmas, and a happy New Year!

Your One-Stop for Quality Blinds

Call us now for an unbeatable range of blinds, local service and great prices

- Vertical Blinds
- Venetian Blinds
- Roller Blinds
- Roman Blinds
- Pleated Blinds



FREE measuring **FREE** installation **FREE** aftercare

Vertical Blinds Offer
2 for £99*
*Each up to 6ft in width
Call for more details



Call now for your **FREE** consultation **MOBILE**

01858 445572 **07855 433739**

Email: simon@wellandvalleyblinds.co.uk
www.wellandvalleyblinds.co.uk

VENISON DIRECT

Something different for Christmas - order now

Locally produced venison available at affordable prices. Mince, cubed, steaks, sausages, burgers and joints. Wheat and gluten free available.



For a price list e-mail venisondirect@talktalk.net
To order contact Bob on **07794950191**

FLORIDA

ORLANDO/DISNEY

Luxury 3 Bed 2 Bath villa with den and private south-facing solar heated pool. Furnished to highest standards & located in a quiet residential development, sleeps 7 + 1.

Just 15 mins from Disney
£380 - £525 pw.

(Reductions for smaller parties)

Details: e-mail :

tonyandjenny@akeley.info

website :

www.jennysfloridavillas.co.uk

or Tel 01280 860669

Chiropody / Podiatry Appointments

Home visits available

All treatments for your foot problems, including: Corns, Verrucae, Calluses, Ingrown nails, Nail problems, Infections, Flat feet, Fallen arches, Aches & pains etc.

Also biomechanical examinations and orthotics to achieve correct foot alignment and relieve pain in the feet and legs.



For an appointment please contact
Richard Pullar, (Registered Podiatrist),
MSSCh. DipPodMed. MBChA

on 01604 880719 or 07734 348178

Shock! Horror

I am saddened to report several incidents of anti-social behavior now plague our village.

I have personally observed numerous similar incidents that show a lack of respect for other villager's quality of life. Last weekend I observed two children 'off the lead' on School Road. These children were obviously only partly trained and were not under control. The accompanying 'owners' seemed more interested in enjoying a walk and a chat, paying only limited attention to their charges.

I would remind adults that they have a responsibility to keep proper control of their children. 40 yards of elasticated rope does not constitute 'proper control'.

Whilst on the subject of nuisance, only last week, I came out of my house to enjoy the early evening chill, only to find that I could barely hear the barking of the village's resident canine population due to an unconscionable silence that had sprung up from nowhere. I appeal to all dog lovers in the village. Please put your dogs outside and encourage them to bark thus preventing such a dreadful silence descending on our village.

Just the other weekend a group of fully-grown men wearing funny coloured shirts were observed chasing a ball around the Mawsley Dog Toilet.

Surely the Parish Council can take some action to ensure that the carefully prepared, mowed, sanded and lined toilet is not spoilt by these thoughtless individuals. I must say though, the lines demarking the individual patches, (should that be cubicles?) delineated for individual dog owners, do appear to be rather generous in their spacing. I cannot believe that supposedly educated adults feel they have the right to use this area for their personal pleasure. The totally selfish usage of a space set aside for the convenience (pun intended) of dogs (and possibly their owners) demonstrates a singular lack of consideration for the village in general and dogs in particular.

Every villager should approach anyone, child or adult, playing on the Dog Toilet, and remind them that the proper use of this space requires ownership of a dog. Even casual walking round the edge of the Dog Toilet is a hazard to our canines' health.

The Parish Council or KBC must respect the right of the minority of dog owners to use the Mawsley Dog Toilet. Use of this space as a sports field for adults and children should be banned.

G. Grump Esq.

Useful website. www.police.uk

Did you know that there is a new website from the police that shows crime by district: www.police.uk ? It is very good. You can drill right down to street level. Just enter your postcode and it goes to the surrounding area.

We are of course fortunate to have few crimes in Mawsley, so there's not much there for us but it may be useful to pass on to others who are not so fortunate.



DOG WALKING SERVICE
PLEASE RING
IAN
01536 790665
OR
07962214047

First Choice Caterers

The Event Caterers



Phone 01280-702469

Info@firstchoicecaterers.co.uk

www.firstchoicecaterers.co.uk

[Facebook/Firstchoicecaterers](https://www.facebook.com/Firstchoicecaterers)

The Mawsley Ball caterers



Chiropodist/Podiatrist **All aspects of foot care**

Treatment room or home visit

Julia Stewart

**RGN, BSc (Hons) Podiatry,
MChS, HPC reg.**

7, Glenville Spinney Hill

Tel: 01604 645845

Mob: 07858257941

£22.00 in clinic £25.00 home visit

IDOLZ HAIRDRESSING

Affordable quality haircare products at your doorstep



IN STOCK NOW...

GHD

STRAIGHTENERS

FROM £99

OPEN
7 Days

To Suit Your
Busy Lifestyles

Monday	9.30am-6pm
Tuesday	9.30 - 6pm
Wednesday	9.30 - 8pm
Thursday	9.30 - 8pm
Friday	9.30 - 6pm
Saturday	8.00 - 4pm
Sunday	10am - 4pm

01536790540



Xmas booking filling fast - so hurry!
Open every day till 3pm Xmas Eve
- re-open on 30th December



If you haven't tried us yet, then you're missing out!

If you haven't heard how good we are and you want to have anything from a blow-dry to a full change of colour + hair redesign, then why not come and visit us now!

We have several trained staff waiting to look after you and listen to exactly what you want. *MERRY XMAS TO YOU ALL*

While we wrap up against the cold



Rob on last year's Enduro event in the French Alps

.....Rob Holdcroft from Long Breech will be taking part in an endurance motorcycle event across one of the most incredible and beautiful regions of the world – South India.

This 'Enduro India' adventure, taking place in January 2012, has long been a dream of his and as it is such a gruelling event he has decided to try and raise some money for the charity, The Rainbow Trust.

Rob will be Riding a Royal Enfield Bullet 2,000km across the Western Ghat mountain range, crossing the testing and diverse terrain of Goa, Kerala, Karnataka and Tamil Nadu in Southern India. The bike is a classic 1960's designed royal Enfield. They still make them in India to the same design as the original 1960 version.

The 2000km rally will be a real challenge for him as it takes in a huge array of different terrains. From busy towns and cities, to arid desert plains, dense seldom used forest trails and on to mountain passes rarely seeing tarmac. Riding the Enfield for over 8 hours a day for 13 days in these terrains promises to be a real test of endurance.

If you could find a way to support Rob through this gruelling ride by donating a little money to his chosen charity, the Rainbow Trust, it will ensure he will have the determination and stamina to complete this mammoth ride. Every penny you donate will go directly to the charity, making a massive difference to children in England.

To donate to Rob's chosen charity go to: <http://uk.virginmoneygiving.com/RobertHoldcroft>

For more information on the ride go to: <http://www.globalenduro.com/enduroindia/>

ROB PRICE

Automotive Services

Price Automotive Services Ltd

146 Northampton Road
Broughton
Kettering
Northamptonshire
NN14 1NS

Telephone/Fax: 01536 790901
Mobile: 07850 960350

- **Petrol and Diesel MOTs**
- **Servicing and Repairs to any make, old and new**
- **Full diagnostic service**
- **Air conditioning service and refresh**
- **Clutches, brakes, welding, exhausts, shocks**
- **Free local collection and delivery or run-back service available**
- **For friendly and efficient service or advice please call**



01536 790901



CHILDREN'S LIVES IN MAWSLEY -

On Saturday 1st October 2011 a group of young people living in Mawsley, together with researchers from the Universities of Warwick, Northampton and Leicester ran a workshop with children, young people and adults who live and work in the Village. The aim of the event was to create a space where children and adults could discuss their views regarding their community and for adults to hear directly from the children and young people what is important to them.

The workshop was part of a larger project into the lives of children and young people growing up in four new communities in Northamptonshire. It focuses on children and young people's everyday journeys, their play and their sense of belonging and participation in community life. The project team has spent six months in each of the four communities in Northamptonshire and carried out the following:

- ♦ Interviews and focus groups with children and young people (aged 9-16)
- ♦ Guided walks around their local community with children and young people
- ♦ A GPS study with children and young people, tracking their movements
- ♦ Consultations with practitioners working on community provision for young people
- ♦ Interviews with key partners in urban planning, policy and decision-making

We hope that the workshop will form part of an on-going conversation between children, young people and adults about what makes the village a good place for children and young people to live and grow up in. Forty five people participated in the workshop, which included a walk and picnic in the village. Thanks go to 'Coffee at No. 9' for providing a delicious picnic and to 'The Centre at Mawsley' for the venue and helping on the day.



'Future tree'

**A version of the 'Future tree' outlining the issues raised at the workshop has been put up in The Centre
- come and have a look!**

For more information about the project, research findings or the workshop, please contact Sophie:
sophie.hadfield-hill@northampton.ac.uk



Blue Water

Plumbing & Heating

Boiler... Repairs, Servicing, Installations
Gas Safe registered
Qualified Engineers
Professional Service
Fast Response
Fully Insured
Free Estimates
24hr Emergency

-Fireplaces
-Bathrooms
-Tiling
-Decorating

For all your Plumbing, Heating and Gas requirements

**Tel : 07813 702611
01536 790831**

Northampton Road, Broughton

www.bluewaterplumbingservices.co.uk

FREE CALL OUT

**NORTHAMPTONSHIRE
DOMESTIC APPLIANCE SERVICES**

**REPAIRS, SUPPLY, SERVICE &
INSTALLATION OF**

- GAS & ELECTRIC COOKERS
- WASHING MACHINES
- TUMBLE DRYERS
- DISHWASHERS
- FRIDGES



SPECIALISTS IN:
**AEG, ZANUSSI, ELECTROLUX,
BOSCH, NEFF, CANNON,
HOTPOINT, AND ALL LEADING BRANDS**
FRIENDLY, HONEST SERVICE
**PHONE 01536 359596 or
07963 331302**

- VILLAGE WORKSHOP

A group of six young people worked with the researchers, organising and preparing this workshop event in Mawsley Village.

This is what they say:

'The purpose of the workshop was for young people in the community to be heard. It was a great success, many came and it was good that it was a lovely sunny day.'

'The workshop started at 9am at the Centre in Mawsley. In groups we had a discussion, each group had a separate subject to cover about Mawsley. During lunch we all picked up a packed lunch and went on a tour of the village and each place we went to we would talk about it and say 'who goes there, could it be improved and is it safe.' A great thing we did was put up a paper tree in the Centre where the leaves had comments written on them about parts of Mawsley people liked, disliked and could be improved.'

'The adults and children interacted with each other by being in groups of people all ages. They discussed and talked in the different activities and shared their opinions with each other. The adults listened to what we had to say and took on board

what we said and really looked like they were thinking about it. We hope that for the future some of the adults that attended the workshop are in positions to help improve our village; hopefully this will support a change for the better.'

As one of the young people participating in the workshop said:

'I learnt in the workshop how we could make a change to our community ourselves and met lots of people to help us. So in the future we know if we had any ideas we could put them forward to these people. I hope that our ideas are taken into account and are maybe even considered. I wish for an improved and successful community.'

'Due to starting secondary school I have had to make lots of friends and when I went to the workshop I met some girls from my secondary school that I hadn't come across before and now they are really good friends of mine. I also met loads of new people from the area.'

Contributors: Bradley, Eliot, Harriet, Holly, Jon, Vicki.

COFFEE AT NO.9 MAWSLEY

DELI-STYLE DOORSTEP SANDWICHES TO EAT IN OR TAKE AWAY:

- FRESH CARVED HAM SALAD •
- PIRI PIRI CHICKEN SALAD •
- TUNA IN DILL & LEMON MAYO SALAD •
- ROAST BEEF WITH HORSE RADISH SALAD •
- TURKEY & CRANBERRY SALAD •
- CANADIAN CHEDDAR & PICKLE SALAD •
- BRIE & CRANBERRY SALAD • B.L.T. •
- LEMON PEPPER CHICKEN SALAD •

BUSINESS PLATTERS AVAILABLE IN OUR SMALL ARTIZAN ROLLS
OR WHY NOT IMPRESS YOUR FRIENDS AT HOME!

- DAILY SPECIALS • SPECIALITY COFFEES & LOOSE LEAF TEAS •
- CUP CAKES & MUFFIN BAR • FRESH BREAD SOLD DAILY •

On 20th December I will be celebrating my 1st year at No 9.
'Thank you' to all my customers for your support and making it
such a successful year. Call in and celebrate with me throughout
the week before Christmas. Chris P

COFFEE AT NO.9 • 9 BARNWELL COURT • TEL. CHRIS 07704 376582
OPEN: TUESDAY TO FRIDAY 8AM - 4PM / SATURDAY 9AM - 3PM



DOGGIES DELIGHT

KETTERING

Professional dog grooming

Bath and dry Health checks
Nails clipped Clipping Scissoring

Call: 01536 521933

Mob: 07906 163713

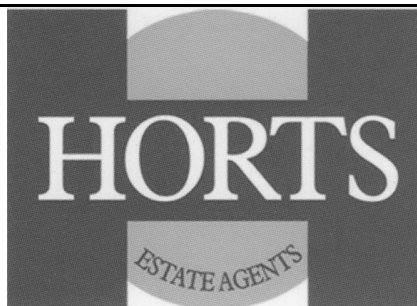
doggiesdelight.vpweb.co.uk

Homes urgently required in Mawsley

Sales and enquiries through the roof.

Desperately need more properties of all types for waiting buyers.

Call now for a free, no obligation, valuation.



Office: 01536 790118

Mobile: 07970607085

Email: ray.jacobs@horts.co.uk

RAY JACOBS

As your local property consultant for Horts Estate Agents I thought I would answer in this advertisement the most frequently asked question people approach me with regarding selling their houses in Mawsley.



What is the best way to create/add value to my property before I sell or for long term capital growth?

Without doubt this is the question I get asked the most. Before you do anything to your home you should ask yourself whether you are doing the work for your own benefit or for resale. Try to cover both scenarios and make changes that you can enjoy whilst improving the value and saleability. I suggest the five main points that you need to look at are; kitchen, bathrooms, decoration, windows and kerb appeal.

The Kitchen: Often the most saleable room of a home. There are some fantastic styles of kitchen unit and some weird and wonderful appliances available. I would recommend that if you are not selling within a few years you go for a very traditional and robust kitchen that does not date. In the last 20 years styles of kitchens must have changed at least five or six times. In fact the only style that has remained constant has been the wood fronted base and wall style units. Appliance wise you need to think about building in as much as possible. The modern day buyer will expect a kitchen to have an oven, hob, fridge/freezer and dishwasher built in.

Bathrooms: On the subject of bathrooms I have seen some wonderful colours over the years. Colours are OUT! There is only one type of bathroom that you should install, and that is a white suite with chrome fittings. If you are thinking resale, do not remove a bath and replace it with a shower if it is the only bath in the house.

Windows: Sealed unit windows are now part of building regulation so again double glazing has become a MUST.

Wood is as popular as UPVC, but only if the wooden windows have been maintained and are in perfect working order. Wooden windows last for decades if you take care of them.

Decoration: The simple rule for decoration is that unless you are very competent on the art of interior design, keep it neutral. Houses never fail to sell with magnolia walls and white ceilings. Light colours will also give a house a much more airy feel. Carpets are still as popular as wooden and laminate flooring, but if you are going for carpets keep them neutral and try to run the same colour throughout the property.

Kerb Appeal: In so many instances I have been to value a house where internally it is absolutely immaculate. No good if the outside is tatty. Kerb appeal is about first impressions and that means the landscaping needs to be trimmed and the lawn needs to be mowed regularly. Windows need to be up to scratch and front doors, if wooden, need to be painted.

As a final thought, remember home improvements don't need to be expensive. It is not the amount of money you put into your home that counts, it is the amount of thought!

Next issue I shall answer the second most asked question directed to me.... Why should I use Horts, a Northampton based agent, to sell my house in Mawsley? It's a great question; let's hope I can give you a great answer!

Don't forget I am continuing my mission to raise funds for Mawsley Community Primary School into 2012. Remember for every new instruction and every house that sells i will make a contribution to F.O.M.S. So far from July through to December 2011 with your help (and houses) together we have raised £525. A big thank you to everyone who had faith in me and Horts to sell their property. I will endeavour to do even better next year.

Finally unsure whether to use Horts?

See what our previous and current clients say about us on www.allagents.co.uk.

Merry Christmas & a Happy New Year.

Mawsley Day Nursery

& out of school club

We may be small but together
we make a BIG difference



01536 791609

Holiday Playscheme

From Monday 19th to Friday 23rd December and also Tuesday 3rd January 2012.

Monday 19th= Let's Get Creative, arts and crafts galore!

Tuesday 20th=Experiment Day, getting down to the science behind things, making slimes, volcanoes & lots more.

Weds 21st= Forest Fun! Going on a mystery hunt in the Mawsley woodland. What will we find is the big question?

Thurs 22nd= Extreme Sports Day, Bring in your scooters and skates and get ready for an action packed day at the park! Helmets must be worn!

Friday 23rd= PARTY TIME! Dress to impress at the Christmas party, with food, music and games.

Contact the nursery to reserve your place!

This year has been very exciting so we want tell you what we have been up to.

Babies - We have been busy creating our high contrast area (Red, Black and White area) and have also developed our heuristic play experiences, which our babies of all ages love to explore. They have loved discovering out in the garden, especially our big new sand pit and water tray, climbing in and out of the tunnels and tents. However no activity comes close to the fun that we have when making a mess; they love rolling around in the corn flour, covering each other in foamy soap and body painting.

Toddlers - for us, our favourite thing to do has to be getting messy! The messier, the better! On one occasion, all the children got covered in paper maché while making the biggest Junk Modelling Monster ever! But by far the best thing was our visit from the fire engine, police car and the ambulance! It has been the one event that the children have talked about again and again. We were also pleased to see many of our parents come along and join in with the fun!

Rising threes - we have mostly enjoyed planting lots of different vegetables and flowers out in our garden; carrots, spring onions, tomatoes and potatoes, but the peas were the best as we didn't have to wait for those to be cooked. Yummy! We have also been learning sign language, for example how to sign for toilet, drink and teddies. It has helped them communicate their needs and they are all starting to use sign within the daily routine.

Pre-School - the highlight of our year was Jenni's wedding. The children absolutely loved getting involved; they dressed up in Katrina's very own wedding dress and they were over joyed to see Jenni in her dress on the day, although they found it hard to understand why her daddy was wearing a skirt! (Kilt to us). The children have also enjoyed spending time down at Willows nature group, climbing trees, building dens, making magic potions and decorating the trees with our fruit paint.

Next year promises to be even more exciting in our newly extended premises so we look forward to welcoming your child to join in the fun!

Happy Christmas!

Don't miss out on
FREE REGISTRATION
ACROSS THE NURSERY
Offer ends 31st Jan.

OPEN DAY
Coming soon in the New Year.
Come along and see our new pre-
school room, our outdoors
indoors garden room, and
experience our new stimulating
sensory room.

Now taking baby and pre
school registrations for 2012
and 2013.
We are filling up quickly, We
recommend booking as soon as

Mawsley Contact Details

Please contact any of the following to make suggestions, ask questions or discuss current issues:

Mawsley Villagers Association (MVA)

mva@mawsleyvillage.co.uk

Chair: Bob Littler 791447

Other positions vacant

Mawsley Parish Council

pc@mawsleyvillage.co.uk

Chair: Cllr. Peter Thomas 799108

Deputy Chair: Cllr. Clare Farthing 799041

Clerk: Diana MacCarthy

mawsleyclerk@tiscali.co.uk

The Centre @ Mawsley

Manager, Jane Twisleton 799528

www.thecentreatmawsley.co.uk

themanager@thecentreatmawsley.co.uk

Mawsley CP School 799182

Headteacher: Mrs Elaine Wright

Mawsley Medical 791300

Neighbourhood Watch Co-ordinator

Dave Cross david.a.cross@gmail.com

Kettering Borough Council

Cllr. Jim Hakewill 01858 467686

jimhakewill@kettering.gov.uk

Cllr. Cliff Morton

cliffmoreton@kettering.gov.uk

Community Development Officer

Tim Bellamy 534355

timbellamy@kettering.gov.uk

Northamptonshire County Council

Cllr. Jim Harker 01604 236982

jharker@northamptonshire.gov.uk

MP Philip Hollobone

0207 2198373 or 07979 850126

hollobonep@parliament.uk

Newsletter & Advertiser Editor

Pat Rowley 791881

rowleypj@btinternet.com

Mawsley website

www.mawsleyvillage.co.uk

Thank you to all our advertisers

who provide the funding for this newsletter with some to spare for MVA projects.

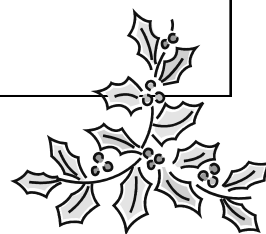
Special mention goes to **Richard Pullar, Chiropodist**, our longest running advertiser, who has supported us regularly since September 2004. He is followed closely by **Ian Ramsay, Painter and Decorator**, whose first advert appeared just two months later.

On searching our records it came as a great surprise to find that **Idolz Hairdressing** advertised with us as long ago as March 2005 which was three years before David opened his salon here. How come? We did a special feature on Rothwell in that issue which I daresay David has forgotten about as well. **Chris**, at **Strands** in Broughton, has been on our books since July 2005.

There are no prizes for longevity but the fact that these people have stayed with us for so long indicates that their adverts are working for them. Let's keep it that way by using all our very local businesses and services as much as we can.

It costs between 40p and 50p, depending on size, to produce each copy of this newsletter. It would be more if it were not for the generous donation of all the paper by Howard Smith Paper which we have enjoyed for many years now thanks to Andy Buxton who lives in the village.

Happy Christmas to all our advertisers and supporters.



Next issue out on 18th January

Copy date is Friday 6th January

Adverts and newsletter items to Pat Rowley

Tel: 791881 rowleypj@btinternet.com

MAWSLEY NEWSLETTER & ADVERTISER is produced, on a voluntary basis, for Mawsley Villagers Assoc Ltd.

It is distributed to almost 900 homes in Mawsley. All profit goes into village funds. You can also read it on the village

website: mawsleyvillage.co.uk