



# Mawsley News & Views

January/February 2014



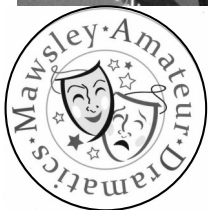
*Santa says farewell after his visit to the Children's Christmas Party. (See next page for his other activities in Mawsley)*

## Happy New Year!

January is, as usual, proving to be a quiet month in Mawsley so we are taking the opportunity to look back and remind ourselves of all those who contributed to our community in 2013 (see our New Year Honours list on pages 6 and 7) and to look forward with all good intentions to 2014 (see Get Fit - Keep Fit on page 17 and New Year Resolutions on page 11).

### Inside News & Views

The Centre	3	Letters	14
MVA	4, 5	School	15
Parish Council	8, 9	Village groups	16 - 22
Police	10	Church	23
Word on the street	11	Local history	26,27
What's On	13	Contacts	28



## **A BIG THANK YOU FROM** **SANTA!**

HO HO HO!

I was so pleased with the village support on my sleigh ride around Mawsley.

My elves, Frosty and I were raising money for Cransley Hospice and with everyone's generosity you as a village raised £592.

I thoroughly enjoyed watching and taking part in MADS Panto in December 2013. I was pleased to see so many of you there watching. The cast were fantastic and everyone involved in the production should have been very pleased with themselves; you were all definitely on my Nice list.

I'm now having a well-earned rest and wish everyone a Happy New Year for 2014.

But children remember I'll know who's being naughty or nice, I'll be making a list and checking it twice. . . .

Ho Ho Ho!



### **Plumbing & Heating**

**Boiler... Repairs, Servicing, Installations**  
Gas Safe registered  
Qualified Engineers  
Professional Service  
Fast Response  
Fully Insured  
Free Estimates  
24hr Emergency

**-Fireplaces**  
**-Bathrooms**  
**-Tiling**  
**-Decorating**

For all your Plumbing, Heating and Gas requirements

**Tel : 07813 702611**  
**01536 790831**

**Northampton Road, Broughton**

**[www.bluewaterplumbingservices.co.uk](http://www.bluewaterplumbingservices.co.uk)**

## ***RuBex Cleaning Solutions*** ***Come back to a sparkling home!***

Do you need help with your daily cleaning?  
Whether it be a one off or regular clean,  
we are here to help!

All of our employees are CRB checked and insured for our customers' peace of mind.

Cleaning materials and equipment supplied.

***Let us sweep all of your  
cleaning worries away!***

*Call us today!!*

TEL: Becky: 07598242808

Ruth: 07788555168

EMAIL:

**[rubexcleaningsolutions@hotmail.co.uk](mailto:rubexcleaningsolutions@hotmail.co.uk)**

Visit our website:

**[www.rubexcleaningsolutions.weebly.co.uk](http://www.rubexcleaningsolutions.weebly.co.uk)**

Or find us on Facebook!

To advertise your business in

Mawsley News & Views

please contact Pat Rowley

[rowleypj@btinternet.com](mailto:rowleypj@btinternet.com) K 791881



**Web:** [www.thecentreatmawsley.co.uk](http://www.thecentreatmawsley.co.uk)

**Facebook:** The Centre at Mawsley

**Twitter:** @centre\_mawsley

**Phone:** 01536 799528

# the centre at Mawsley

Well what a month December has been; we have been very busy on the hunt for our new Centre Manager and hope to have someone in place very soon! The Management team at the Centre would like to take this opportunity to thank Steve Buckle for all he achieved for TCAM during his time with us and also to wish Steve and his wife Cheryl the very best of success with their new venture.

On a similar note we would like say a very big thank-you to all our team at The Centre for their hard work over the Christmas period, and especially to Debbie, who in the absence of a Centre Manager is doing a great job of keeping everything going!

December saw several successful events, including Quiz night hosted by James Whittle which saw the hall full to capacity. Thanks to all those who donated prizes.

The Kids Christmas Party was sold out and enjoyed by everybody who attended. JustParty provided the excellent disco and entertainment and even more excitingly Father Christmas took time out of his busy schedule to bring his sleigh for a visit!

The first kids' movie night was a great success, and many children enjoyed the film and snacks. A special offer of chicken nuggets and chips proved very popular.

Additionally, TCAM hosted MADS' performance of a Christmas Tale as well as a fantastic Madagascan themed New Year's Eve party, where the kids could join in the countdown to midnight (in Madagascar) but at 9pm in Mawsley! This was followed by music in the Bar.

All of the team from The Centre at Mawsley would like to take this opportunity to thank our customers for their support and custom during 2013 and we look forward to seeing you all lots in 2014!

Vicky Waine  
TCAM Management Team



## Coming Soon at The Centre....

### Quiz Nights

Thursdays 28th January and 27th February

### Wine tasting with Duncan Murray

Friday 31st January

See page 13 for more information on these events.

**Don't forget that our TV sports schedule is published on the website [www.thecentreatmawsley.co.uk](http://www.thecentreatmawsley.co.uk) along with the What's On Schedule.**

The TCAM team would welcome your views. We currently devise a sports schedule a month at a time to produce a list of what sporting events will be shown.

Have we missed something off? Are we not showing your favourite team or sporting event?

Let us have your views. Pop in to The Centre or email your ideas to: Steve Thorpe on [sathorpe603@icloud.com](mailto:sathorpe603@icloud.com)

## Mawsley News & Views

## The next News & Views is due out on

**19th March**

**Please send your articles etc. to the editor by**

**Friday 7th March**

Pat Rowley

[rowleypj@btinternet.com](mailto:rowleypj@btinternet.com)

791881

is brought to you 6 times a year by the MVA. Its purpose is to keep you informed about events and decisions in the village and to provide space for your ideas and views. Don't keep them to yourself! The editor welcomes letters, articles and pictures from Mawsley residents.



## Bonfire & Firework Night

It was a record breaker!

Mawsley's Bonfire & Firework Night is clearly proving to be a popular village event with attendance in 2013 breaking the 1,000 paying adults level for the first time! Who knows how many children enjoyed the fun for free!

The night made a profit of £1,984 plus the donation from Barclaycard of £1,055 which all goes into MVA funds for the village.

To all of you who attended, thank you for supporting the event and we hope to see even more of you joining us this year (Nov 8th 2014).

Martin Bentley

## Youth Club

Thanks to the volunteers who came forward following our recent appeal Youth Club is definitely now up and running.

We have a varied programme, as you can see from the schedule below and from the picture of last term's human snowman competition.



### Youth Club Schedule - Wednesday evenings 6.30 - 8.30pm

- 22nd January  
Fire Service visit and talk, including a look around the fire engine.
- 29th January  
Chinese New Year crafts and quiz. Chinese food tasting.
- 5th February  
Police traffic team talk
- 12th February  
Ping Pong table out. Valentines cards and biscuit icing.
- 19th February  
Closed Half Term
- 26th February  
Karate / Zumba demo

## Mawsley Villagers

Out with the old,  
in with the new...

The end of 2013 sees village activities continuing in abundance with a lot to look forward to in the new year.



Our routine events continue to thrive, including the Baby and Toddler group and a revamped Youth Club both led by teams of committed volunteers.

As reported in previous 'News & Views' our big 2013 events - the Fun Day and Bonfire Night, were hugely successful. Although these events are not motivated by profit we are delighted that the 2013 Bonfire Night broke all previous records. Needless to say the surplus funds are always ploughed back into village amenities and community groups. Facilities like the newly extended Play Area, for example, would not be possible without such support.

Your thoughts and suggestions for MVA support are, as ever, very welcome.

Meanwhile, a happy and prosperous New Year, to all readers.

**Rob Bailey**

**Mawsley Villagers Association Chair**



[www.mawsleyvillage.co.uk](http://www.mawsleyvillage.co.uk)

The gateway to facilities, events, newsletters and businesses in Mawsley.

# Association

## MVA Finances

Below Bob Littler has set out the income and expenditure account (unaudited ) for 2012/13.

To simplify it even further the figures show that MVA profits from its three income earners, this newsletter, Fun Day and Fireworks, amounted to almost £8,000 in the year and that £7,767 of this was used to make donations to village groups, to contribute to the new play area and to support the Youth Club.

Editor

### MVA: 2012-13 Accounts

Below are the simple income and expenditure figures for the MVA last year. (Accounting year end is 30 November.) The accounts have not yet been audited so they are not the final accounting figures - which will be slightly different as accountants always move things around.

	Spend	Receipts	Net	
Newsletter	£2,734	£7,137	£4,403	
Youth Club	£2,368	£2,212	-£155	
Play area	£61,412	£54,452	-£6,961	
Fun Day	£513	£1,226	£713	See note 1
Fireworks	£3,620	£6,500	£2,880	
Repayment of loans	£0	£4,311	£4,311	See note 2
Donations	£651.00	£0.00	-£651	See note 3
Other	£1,675	£152	-£1,523	See note 4
<b>Overall total</b>	<b>£72,972</b>	<b>£75,989</b>	<b>£3,017</b>	

Notes:

1. Most Fun Day expenditure is incurred by, and receipts accrue to, The Centre.
2. The MVA has made various loans to The Centre to enable purchase of capital assets. Current ones are:

Mood lighting in the main hall:	£4429 (now fully repaid)
IT - server:	£1680 (now fully repaid)
New lining for the marquee in the main hall:	£3350 (will be fully repaid by end-2014)

3. Details:

Mawsley Amateur Dramatics:	£60
Touch Rugby:	£100
The Centre:	£241
Under 5s Group:	£250

4. "Other" expenditure is mostly accounting fees and insurances.

If you would like to see any further details please contact me:

[boblittler@btconnect.com](mailto:boblittler@btconnect.com).

Bob Littler

## Baby & Toddler Group



Happy new year!

Firstly a big thank you to Father Christmas for taking time out of his very busy schedule to come and visit us at the end of last term; it was a wonderful surprise and the children were very excited to receive a gift.

We hope you have all had a wonderful break and are looking forward to joining us again at Toddlers.

We are excited with the prospect of another new term ahead at Mawsley toddlers, albeit a shorter five weeks!

Our topic this term is aptly all things winter. If you want to get out of the rain and enjoy a wonderland of snow and winter fun, come along and join us on Thursday mornings from 9.15am to 11.00am at The Centre. The cost is £1.50 for the first child and 50p for additional children. We are open to all parents/guardians and their children, from newborns to 4 years.

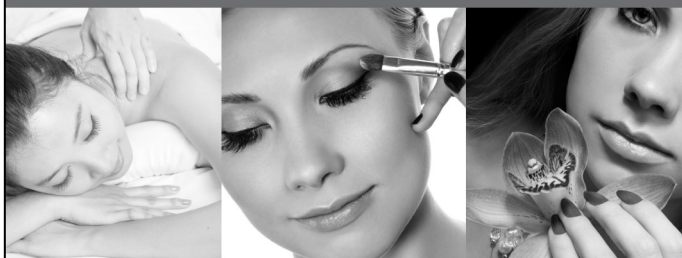
The theme for each coming week will be posted on our Facebook page; visit and join as a friend at Mawsley Toddlers for all the news; we also post on the Mawsley Village page too.

Along with all the exciting crafts, sensory and role play, we have some new toys for you all to enjoy.

Now for the pleas...we are in need of clean jars with lids, all shapes and sizes welcome. If you have any that you can retrieve from the recycling, please drop off at Toddler Group on Thursday mornings or to 15 Loddington Way. We need them by the 10th February for a craft activity and will post pictures of the finished results.

Many thanks in advance.

Contacts: Anthea Cane (07596 022525)  
Krista Alford (07742 601100)



## Professional Beauty Salon

- Manicures & Pedicures
- Waxing & Threading
- Massage • Facials
- Spray Tanning
- Lashes • Gels
- Make Up • Weddings
- Pamper Parties

10 % OFF With This Advert

**gelish** SOAK-OFF® GEL POLISH

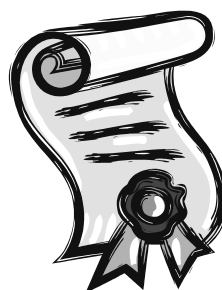
**Lily Lolo**® MINERAL COSMETICS

**siennaXX**

**Tel: 01536 760 222**

**www.sanctuaryofbeauty.co.uk**

**3 The Oaks Braybrooke Road Desborough**



### School Volunteer Helpers

Angie Miller  
Nicola Wisdom  
Emma Haynes  
Stephanie Tilley  
Anthea Cane  
Rachel Sherwood  
Heather Mallinson  
Jeanette Harmon  
Jennifer Bradbury  
Claire Ashall  
Kirstie Marston  
Ruth Taylor  
Louise Slaven  
Suki Harmon

### School Governors

Pat Downing  
Melanie Adams  
Stephen Harmon  
Steve Buckle  
John Drake  
Geoff Marston  
Tricia Cottingham  
Brian Withington  
Sarah Meeks  
Phil Orchard  
Marlyn Collins  
Nicola Hoy  
Rebecca Clegg  
Karen Franklin

### Friends of Mawsley School

Claire Burlin  
Emma Cunningham  
Suzanne Orchard  
Kirstie Marston  
Nicola Greenwood  
Nicola Wisdom  
Anne Whittaker  
Diana MacCarthy  
Suzanne Kay

### Babies and Toddlers

Anthea Cane  
Krista Alford  
Sam Eggleton  
Shelly Brown  
Darren Poulter

## Mawsley New

### Mawsley Youth Football

Nick Hughes  
Pauline Duncan  
Mark Willis  
George King  
Graham Haines  
Paul Hooper  
Craig Duncan  
Mark Simmons  
Tim Davies  
James Geddes  
Kevin Ayers  
Shane Manning  
Tyrone Long  
Gary Mileham  
Dominic Lehane

### News & Views

Pat Rowley  
Tricia Cottingham  
Judy Baker  
Craig Cacchioli  
Tom Sanders  
Marlyn Collins  
Brenda Quinn  
Bernadette Foote  
Heather & Rob Mallinson  
Julia Tabiner  
Meg & Garth McMullen  
Richard & Sylvia Crabtree  
Les Cottingham  
Barbara Harris  
Jacqui Wilson  
Niki Fleming  
Kathryn Berrill  
Mick Podd  
Lizzie Souter  
Judith Halliday  
Linda Hallam

### Rounders

Sam Buckwell  
Karen Garton  
Kirstie Marston  
Debbie Castley

### Touch Rugby

Martin Watts  
Allister Viljoen  
Andrew Smedmore  
Nat Payne  
Tom Perryman

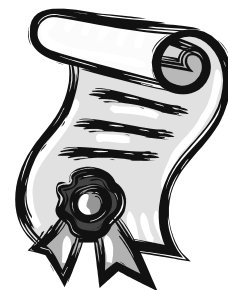
### Allotments

Maggie Denham  
Andrew Christie  
Tom Sanders

### Line Dancing

Jacqui Wilson

# Year Honours List for services in 2013



Not Buckingham Palace and not even an awards ceremony at The Centre but just a heartfelt 'thank you' to the many, many volunteers in Mawsley who have given up their time during all or part of 2013 to do something for the benefit of the community. There are more than 200 names on this list (excluding the many duplicate entries) in no particular order and it just goes to show that it isn't always the same few people doing stuff - there are hundreds of you!

**Thank you, thank you, thank you!**

## Parish Councillors

Richard Barnwell  
Richard Meredith  
Francis Allbury  
Tracey Baker  
Bob Littler  
Clare Farthing  
Christine Mclvor  
Davina Macdonald  
Vic Cope

## Coffee Club

Jean & David Wilson  
Molly & John Shortt

## MVA and TCAM

Rob Bailey  
Martin Bentley  
Simon Wisdom  
John Holton  
Vicky Wayne  
Steve Thorpe  
Stephen Farthing  
Paul Feasey  
Bob Littler  
Gilbert van der Wal  
Mary-Rose Dolan Holland

## MADS

Samuel Bradshaw  
Doreen Cope  
Lucy Cope  
Vic Cope  
Jack Den-Drijver  
Pat Downing  
Bob Holland  
Karen McKessick  
Gareth Norris  
Josh Simson

## Loddington/Mawsley CC

Richard Baker  
Marc Braithwaite  
Iain Holliday  
Karl Sanders  
Nick Williams  
Joan Harrop  
Colin Harrop  
Sid Reynolds  
Ian Hadlow  
Stuart Coles

## Indoor Bowls

Vic Cope  
Alan Pritchard  
Tricia Cottington  
Denise Mugglestone  
Judy Baker

## WI

Brenda Quinn  
Denise Mugglestone

## Mawsley Choir

Richard Hoy  
Frances Allbury  
Gareth Norris  
Carole Lyttle  
Michael Bowie

## Youth Club

Allan Macdonald  
Vicky Wayne  
Steve Thorpe  
Dawn Calnan  
Lisa Anthony  
Nick Haley  
Tony Godson  
Claire Bentley

## Last of the Summer Wine Group

Vic Cope  
Frank Quinn  
Les Cottington  
Brian Sutcliffe  
Tom Sanders  
Steve Draycott

## Guides/Brownies/Rainbows

Anne Whittaker  
Laura Sturland  
Elaine Foster  
Jan Lowe  
Molly Clifford  
Amy Beckett  
Holly Foster  
Sarah Blackman  
Hannah Crockatt  
Teresa Gable  
Nikki Hunt  
Laura Hilliard

## Scouts/Cubs/Beavers

Mary Findlay  
Russ Findlay  
Shaun Thompstone  
Judy Bauckham  
Colin Bauckham  
Andy Farr  
Ian Kelly  
Tris Tanner  
Kelly Findlay  
Lesley West  
Dave Durrant  
Vanessa Mileham  
Simon Collins  
Dawn Douglas  
Gary Spender

## Neighbourhood Watch

Christine Mclvor  
Ian Birks  
Garth McMullen  
Martin Bentley  
Pat Downing  
Les Cottington  
Heather Mallinson  
Tom Sanders  
Jean Wilson

## Sports Council

Volunteers from other clubs

## Other event helpers

*(excluding anyone already on the list)*

Charlie Brown  
Maureen Jackson  
Barbara Pritchard  
Brian Tuite  
Reg Baker  
Claire Bentley  
Simon Dolan Holland  
Tim Greenwood  
Sarah Hart  
Andy Seunaryan  
Jane Twistleton  
Marieke White  
Craig Benham  
Richard Harmon  
Ellie Gill  
Sarah Meeks  
Keira Hayman

## Tracey Haddock

Ali Buttress  
Chris Waine  
Nick Moore  
Chris Hamilton  
Emma Brown  
Emma Jacobs  
Emma Wilson  
Jen Tedore  
Karen Atherton  
Kate Baxter  
Michelle Brooks  
Sophie Henson  
Suzanne McMinn  
Yvette Den-Drijver  
Amy Den-Drijver  
Leslie Forsyth  
Laura Scott and her mum  
Pauline Duncan  
Victoria Perry  
Claire Donaghy  
Mrs Beattie  
Amanda Carroll  
Debbie Radcliffe  
Debbie Gill  
Jill Timms  
Dawn Smyth  
Hannah Crockatt  
Paul Atherton  
Steve Cunningham  
Craig Duncan  
And all the Mums & Dads who regularly lend a hand.



Who have we missed?  
Apologies for any omissions.  
If you know of a village volunteer who we have missed please let the editor know and we'll include them next time.

## **A New Year's message from Richard Barnwell**

### **Chairman Mawsley Parish Council January 2014**



As Chairman of the Parish Council and on behalf of my fellow Councillors, I would like to wish you all a happy and healthy New Year.

As we move in to 2014, we are filled with hope that this year will see the completion of the building and infrastructure works to our village and that the roads, verges and lighting will be adopted and maintained by the relevant authorities.

The project to build Mawsley as Kettering Borough Council's answer to its housing needs back in the 1990s resulted in the sale of the land for the village by my late Father in December 1998. It seems incredible that the village we see today has evolved from bare farmland to a vibrant community in such a comparatively short time. All other villages in our Borough can trace their origins back over 1000 years, so in under 16 years I think we should all allow ourselves a little pride when we consider what has been achieved by the individuals and families who decided to make Mawsley their home.

As the original plan for the village is completed, your Parish Council is considering the future and how we can manage any expansion to our settlement footprint. Under recent government directives, planning laws are changing and we will be asked to accept a given number of new residential building plots in our Parish. (This will be the same for every Parish in the Country). In order to protect our environment as much as possible, your Parish Council had decided to endeavour to complete a Neighbourhood Plan. This will identify and recognise aspects of our village that we wish to protect and areas where we would be prepared to see small expansion.

We intend to take the Neighbourhood Plan forward in the New Year and all Parishioners will be consulted as we go through the process.

Another fundamental change in 2014 is that Kettering Borough Council has voted to abolish the old system of funding for Parish Councils through an annual grant. From April 2014 each Parish Council in the Borough (in line with the rest of the county) will have to raise its own finance via an annual charge to residents known as a precept. This will be shown on your Council Tax Bill, so you will see how much you are paying to support the Parish Council. One thing I can assure you is that 100% of the precept will be spent on supporting the village - most importantly "The Centre". The Centre at Mawsley belongs to the Parish

Council and is run by a management group known as T.C.A.M. whose directors are all village residents. The largest proportion of the Parish Council precept goes to support the running of The Centre and to build up a restricted fund to pay for future maintenance, replacements and improvements. The Parish Council works closely with T.C.A.M. and I am very grateful for all their efforts in providing an excellent facility for the village which I hope you will all use.

Your Parish Council is tasked with representing the residents of the village and our monthly meetings are open for you to attend and speak at if you wish (at the start of the meeting for up to 5 minutes). If you have any issues, please contact us through the village website, the Parish Clerk or a Councillor. (Details on Notice Board). I would respectfully remind residents that Parish Councillors are volunteers who get no remuneration for the hours of service they give in support of the village. I was honoured to be elected as Chairman of the Council last year and I would like to take this opportunity of thanking Parish Councillors past and present, for their determined efforts in building the wonderful community we have today.

In particular, I would like to thank the 5 Parish Councillors who have retired since I became Chairman; Vic Cope, Davina Macdonald, Christine McIvor, Clare Farthing and Peter Thomas, who was an excellent and effective 2<sup>nd</sup> Chairman of the Council. I welcome the new Councillors and look forward to working with them as we move through the year.

Lastly, I would like to pay tribute to all those in our village who do so much to support our important community life.

With all good wishes,

A handwritten signature in black ink that reads "Richard Barnwell". The signature is fluid and cursive, with a long horizontal line extending from the end.

# Mawsley Parish Council

## The Pub Site; what next?

In the last News & Views we described the current situation regarding the Pub Site. We finished up with the following questions:

### **So what do you think?**

*We need some creative thinking to move us beyond this impasse; the site is worth too much for Mawsley Taverns to simply hand it back.*

1. Can you suggest any commercially viable options for the site that would be of benefit to Mawsley?
2. Can you think of a facility for the village that is essential and missing that might persuade KBC to buy the land? What does this village still need? What do other villages of a similar size have that we don't? What would help to develop further our sense of being an inclusive (and fun!) community?

*It's up to us to consider what uses there may be. If we don't come up with some viable ideas it may then become very difficult for the village to have any influence as to the future use of the land.*

There were a few responses and the Parish Council would welcome your views on them. In the interests of fairness the individuals who suggested them have been invited to flesh out their ideas and all the suggestions are listed here whether or not they appear to fulfil the necessary criteria.

### **In response to question 1 above the potentially viable commercial options that were suggested were:**

1. **Gym** - to be provided and run by an established gym organisation which wants an additional site. Gym membership / usage would cover running costs.
2. **A paying Car Park.** The proposer suggests that Kettering council fund the purchase and conversion of the pub site to a Car Park as they will gain long term monetary income, from the use of the car parking facility. There would also be a benefit to Mawsley from a short

term increase of turn over at The Centre- where an extension could be added on to the existing "bar area" to greatly increase food and drink income-from the "pub" customers.

3. **Retirement/sheltered housing for the elderly** close to the surgery, The Centre, shops and bus stop. There are various models for this. A house builder could build appropriate flats/bungalows for sale, with or without some communal facilities - clearly commercially viable. Alternatively accommodation could be provided for rent and managed by a specialist company with village input. There is no purpose built housing for the elderly in Mawsley at the moment so this would allow elderly residents to stay in the village when their own homes are no longer suitable.

### **Responses to question 2 (not commercially viable but of community value) were:**

1. **Storage units for The Centre.** The proposer states that there are schemes from which we could borrow the money to purchase the land and pay it back from the precept. over a number of years As far as the building of the units themselves is concerned this could be paid for or done by volunteer labour. I have already spoken to a number of people. It will all take time but the benefits outweigh the effort. I think KBC owe us a debt for allowing a building like The Centre to be constructed without any storage facility. So I think KBC should be asked for some financial help even if it is only an interest free loan.

2. **Church or chapel.**

3. **Youth Club with climbing wall**

**If you would like to indicate your support for any of these suggestions please contact:**

**Diana MacCarthy, Parish Clerk,**

**[mawsleyclerk@tiscali.co.uk](mailto:mawsleyclerk@tiscali.co.uk)**

**or write to me, the editor, [rowleypj@btinternet.com](mailto:rowleypj@btinternet.com).**

Parish Council Meetings are held at 7.30pm at The Centre on the third Monday of the month.

Future dates are:

**20th January**

**19th February**

**17th March**

Members of the public, resident in Mawsley, are welcome to attend.

Minutes & Agendas are on the village website:

**[www.mawsleyvillage.co.uk](http://www.mawsleyvillage.co.uk)**

The agenda is also posted on the village noticeboards three clear days before each meeting.

### **New Parish Councillors**

Two villagers put themselves forward to fill the two vacancies on the Mawsley Parish Council and their co-option was confirmed as we went to press.

Welcome to:

**Vic Cope and  
Tom Sanders**



I am PC Kyle McGregor based on your local Rural Safer Community Team, basically aiming to bring back the "local Bobby" type policing that we have moved away from due to the demands on the policing front.

Northants Police are, as a result, trying to move back towards that way in a fashion. The idea being that we can build up links and relationships in the community, offering you regular contact with a team that does not change each time you are reporting the next step of an ongoing issue if you have one, ensuring that you do not have to start from scratch each time!

We are also at looking to set up a "Street Watch" scheme, whereby we have local residents assisting us in patrolling the village/small towns in which they live, offering us support to identify those causing issues and up to mischief. I believe that the scheme will be a great way for us to begin building up those key contacts in the community again and also using their local knowledge to assist in the crime side of things. Should you be interested all my details are listed below. Feel free to make contact on any of them.

I would like to end by wishing you a very Happy New Year and all the best for 2014.

PC1185 Kyle McGregor | Rothwell and Slade Valley  
Community Beat Manager |  
Northamptonshire North | Northamptonshire Police  
Telephone 101 Ext 344924 | Facsimile 01604 888261  
| mobex 778685  
Email [kyle.mcgregor@northants.pnn.police.uk](mailto:kyle.mcgregor@northants.pnn.police.uk)  
Address Desborough Police House, Federation Avenue,  
Desborough, NN142NX

Editor: The Parish Council has had a brief discussion about Street Watch based on the very limited information supplied to it at the moment. It is unsure how or whether this new initiative can work alongside Neighbourhood Watch without causing confusion for residents. The Parish Council awaits more information from the Police.

If you have any experience of this scheme please contact the editor.

To advertise your business in

Mawsley News & Views

please contact Pat Rowley

[rowleypj@btinternet.com](mailto:rowleypj@btinternet.com) K 791881



Neighbourhood Watch would like to thank Mawsley Parish Council for their support in providing the funding for twenty Neighbourhood Watch street signs for the village. These

signs make people aware that the Neighbourhood Watch scheme is operating in the village.

Neighbourhood Watch is one of the largest voluntary crime prevention initiatives in the country. The more people who join the scheme, the more effective it will be in preventing crime in the area. If you have not already joined the scheme, and are interested in doing so, please contact me, your village co-ordinator, and I will get in touch with the co-ordinator on your particular 'patch'.

Neighbourhood Watch would like to thank both the co-ordinators and those who have joined the scheme. Their help has been, and is, invaluable in preventing crime in our village.

Christine McIvor

[chrismcivor@hotmail.com](mailto:chrismcivor@hotmail.com)

# India 2 Mawsley

*Restaurant now open!*  
*Booking advised*

**Contemporary Indian & Bangladeshi  
Takeaway is open as usual  
for takeaway and delivery service.**

**OPEN 7 DAYS INCLUDING BANK HOLIDAYS  
5pm - 11pm**

Free delivery\* to Mawsley & surrounding villages  
**10% DISCOUNT ON COLLECTIONS\***  
\* on orders over £12

**TEL: 01536 791108/791018**

**[www.india2mawsley.com](http://www.india2mawsley.com)  
2 BARNWELL COURT, MAWSLEY**

# New Year's Resolutions are a

tradition dating back to Roman times. They were promises, made to their god Janus....January, in

which a person undertook to do an act of self-improvement starting on New Year's Day.

I asked a number of Mawsley residents to choose from the following top 7 of the most popular goals and resolutions.

- ♦ Improve physical well-being: eat healthy food, lose weight, exercise more, eat better, drink less alcohol, quit smoking, stop biting nails, get rid of old bad habits
- ♦ Improve career: perform better at current job, get a better job, establish own business
- ♦ Improve education: improve grades, get a better education, learn something new (such as a foreign language or music), study often, read more books, improve talents
- ♦ Take a holiday
- ♦ Volunteer to help others, practice life skills, use civic virtue, give to charity, volunteer to work part-time in a charity organization.
- ♦ Spend quality time with family members.
- ♦ Try foreign food, discovering new cultures.

## Irina Brooks

"Just started in business and will focus on building reputation, providing quality service, relaxation and well being to my customers.

Continuing with education and training relating to the business.

Holidays will also be high on priorities...when possible."



## Debbie Radcliffe

"Eat healthy food, improve personal time management, drink less alcohol and try to quit smoking again!

A nice holiday....is top of the wish list."



## Ian Young

"Always willing to try. This year's priorities will be...eat healthy food , more quality time with family members and a holiday."



## Jan Holland

"Improve physical and well being following recent operation. Just started small business ...specialist knitting of all garments including toys and doggie coats ! Intend to plan vacation to Australia"

## Emily Mulligan

"I don't do resolutions, I'm being realistic and not sure I could stick to them.

When you want to do something , you have to decide there and then and not just at New Year."



## Brenda Quinn

"Holidays. Improve well being and eat healthily. Learn Italian."



## Sam Mulligan

"Hadn't really thought about it but will try to quit smoking and need to improve finances and save for house move."



## Brian Sutcliffe

"I don't do New Year resolutions, because they tend to interfere with life's small pleasures!"

# Word on the Street

by Tom Sanders

## The Village Retreat Mawsley

*Our clients enjoy very private , leisurely and undisturbed beauty treatments....*

*Waxing*

*Eyebrow Shaping*

*Eyelash & Brow Tinting*

*Tantrick Spray Tanning*

*Eve Taylor Aromatherapy Facials*

*Collagen Facials by Marine Beauty*

*Luxury Manicures & Pedicures by Creative*

*Contour Body Wraps*

**Special Offer for February**

*Eve Taylor Aromatherapy Ultra Quench Facial with free Mini Manicure (nail tidy & polish) - £35*

**Call Nettie on 07712 182231**

*For a full list of treatments visit  
[www.villageretreat.co.uk](http://www.villageretreat.co.uk)*



## THE ONLY WAY IS DEBI



I will be available to do:

- Cut and Blow dries
- Wet cuts
- Blow drying
- Wedding hair
- foiling
- colouring
- straightening
- perming
- Gents' cuts
- children's cuts

**Offer; £45 for foils and cut and blow-dry, during February although limited days so get booking!**



Wedding hair

**Available 7 days a week.**

**Can do any time to suit your working hours or busy schedule.**



Find us on:  
**facebook**

The Only Way Is Debi

**To book appointments, ring:**

**07568 383974**



**The Bathroom Studio Kettering**  
**25 years fitting bathrooms**  
**[www.ketteringbathrooms.co.uk](http://www.ketteringbathrooms.co.uk)**  
**Tel: 01536 410928**  
**Postcode NN15 7LB**

**Visit the showroom with over 18 displays, helpful advice and a design service, supply only or fully installed.**

# What's On

## Wine Tasting Evening with Duncan Murray

Friday 31st January

8pm start

£15 per person

Greco Roman Fancy Dress (optional)

Tickets available from The Centre now

DUNCAN  
MURRAY  
WINES



**Kids Movie**  
**Sat 15th February**  
**5pm start**  
**Free Entry**  
Popcorn & Meals Available

## Boo4charity Event

Saturday 25th January 1-3pm  
at The Centre Mawsley .

Come and join Louise Slaven your  
local Dance Teacher for a 2 hour  
Booiakathon to raise funds  
for the Philippines.

Sponsor forms are available from Mawsley  
Community Primary School, The Centre and from  
Louise Slaven.

Partners, friends and family are welcome to come  
along and support their loved ones dance their  
hearts out for two hours. The bar will be open and  
there is a raffle with some great prizes after the  
Booiakathon at 3pm. Louise would like to thank  
everyone for their support and generosity and is  
looking forward to hosting an energetic and fun 2  
hours of sizzling Booiaka!!

For more information please contact Louise Slaven  
on 07900 992803 louiselaven@btinternet  
facebook 'Louise Slaven Dance'

*It's the way you move*

**BOOIKA**<sup>®</sup>  
BOOIAKAMOVEMENT.COM

**Raffle Quiz Night Drink Promo**  
**Thursdays 30th Jan & 27th Feb 8pm start**



## Darts knockout competition

starting in February (date to be confirmed)

£2 entry

No experience necessary.

The finals will be played on  
a Sunday (again date tbc)  
with music and fun for all.

Please see The Centre at  
Mawsley Facebook page for  
more information.

Steve Thorpe.



## Letters to the Editor

### DOG FOULING

I have just returned from a brisk morning constitutional walk round the village and I was dismayed to see so much dog fouling on the pavements which had not been picked up by the owners. The vast majority of owners are public spirited and care for the village and are assiduous in picking up doggy excrement but it seems that an increasing number cannot be bothered these days. They see it as inconsequential I guess, but there is no such thing as a victimless crime. Quite apart from it being unsightly, it represents a health hazard particularly to small children and to other family pets if trodden on and taken into a house or garden, or into the fields surrounding the village where sheep can be seriously harmed by a disease called sarcocytosis if they ingest any deposits.

Please include a reminder in the next issue of the newsletter of the duty of care each resident has towards others to keep our village an attractive and clean place in which to live and to try to minimise health risks such as outlined above.

Many thanks  
Frances Allbury

### Mawsley Planning Restrictions

I am sorry to report that I have received no further information from Kettering Borough Council Planning Department about which properties in Mawsley are subject to which planning restrictions. I am continuing to press them so that we can publish an accurate list that we can all rely on. Editor

### MAWSLEY COMMUNITY MEMORIAL

A Happy New Year to all and thank you to the people who submitted drawings and a written explanation following my request for suggestions in the last News & Views for a community memorial. The ideas were very different which is very good.

All the drawings and written explanations will be on display in The Centre on the main notice board.

Your views are needed; so could I ask you to email me, Vic Cope, on [do.vic@talktalk.net](mailto:do.vic@talktalk.net) or Telephone 01536 799643 and let me know your views on them and the design you like most or the features from each so we could end up with a combination of good ideas.

Many thanks  
Vic Cope

### Letter from the editor



Does the sign above annoy you as much as it annoys me? I'm not signed up to Facebook and still hope to find any information I want either in print or on a website. So long as these alternatives are available to me I am perfectly happy.

As I have put this edition together I have noticed that some people are **only** providing Facebook info and contact details and I imagine this is going to happen more and more. Am I the only dinosaur in Mawsley who is beginning to feel left out?

What do you think? Please let me know.

Pat Rowley

Adele & Sonia's   
**IRONING  
SERVICE**

Free collection  
**24hr** TURNAROUND  
Free delivery

**ONE OFF OR REGULAR SERVICE  
EXCELLENT RATES**

Sonia  
**07860 744743**

[www.AdeleandSoniaIroningService.co.uk](http://www.AdeleandSoniaIroningService.co.uk)

Phone: 07580 552027 Email: [tgmcsky.com](mailto:tgmcsky.com)



**The Garden Maintenance Company**

10 Main Street, Mawsley, Kettering, NN14 1GA

**The Professional Lawn Mowing & Garden Service**

Just call Simon on 07580 552027

- Lawn Mowing
- Hedge Trimming
- Fence Painting



- Garden Clearance
- Weed Control
- Bespoke Work

## Grandparents' Day

In amongst the hectic timetable building up to Christmas, we decided to invite our children's grandparents in to share some of the fantastic learning that has happened this year. **Close to 150 grandparents came to support their grandchildren** and to share in their learning. We were pleased to welcome so many and we extend our sincere gratitude to those that attended.

Starting with a breakfast our visitors were then treated to a medley of wonderful songs, readings, drama and music performed by all year groups. These were designed to showcase an aspect of the children's learning during the first term.

Our guests then spent the rest of the morning helping out with a wide variety of classroom activities and sharing the learning experiences of their grandchildren. Thankfully, no detentions or punishments were handed out to the grandparents as they were all impeccably behaved!

Special thanks must go to the year 6 children who took on the role of chaperone and assistants for the day – all of the staff and adults were very impressed by their attitude and behaviour, modelling the expectations of the school perfectly.



*"We have been extremely impressed by the enthusiasm and excellent behaviour demonstrated by all the children. Their teachers have worked very hard and we have been lucky enough to see the results. The period piece about the Tudor times was particularly well portrayed."*

*John and Diane Taylor*



**Some of our grandparent visitors getting 'stuck in'!**

*"We have had a wonderful day at grandparent day, such a good idea! Lots of ways helping to bond with the school, as well as our little darlings! We have learned so much!! Such good performances from all the children and so entertaining; keep up the good work. Looking forward to the next one! Thank you so much!"*

*Eva Henson's Nan and Grandad*

## Green fingered and keen?

In the coming year, we plan to relocate our school garden to the far end of the field and are looking for keen helpers to help move and maintain it! So if you have a keen interest in horticulture, and can spare some time we would love to invite you in to discuss our plans for the new garden.

Please call the school on 01536 799182 or pop in to reception and leave your name and number.



It would be interesting to know how far some of the grandparents travelled to be part of this very popular event. I have heard that some made special journeys of 100s of miles.  
Editor

## Mawsley Short Mat Bowls Club



ROLL UP! ROLL UP!

Do you get the Monday Blues?

Then join us at The Centre for the game of Bowls.

We meet at 1pm to start playing at 1.15 and we finish before 3.15 so you still have time to pick up your children from school.

Just turn up with some flat soled shoes. We have spare bowls for you to use and your first three Mondays are free.

Come and give it a go and have some laughs.

For more info ring Alan 790820  
Alan Pritchard.  
Club secretary.



## MAWSLEY YOUTH FOOTBALL UNDER 6 PLAYER RECRUITMENT NOW OPEN!

Initial interest has been really promising, so I am delighted to announce we *will* be creating a Mawsley YFC Under 6s in the New Year. I would like to hear from you if your child would like to develop their skills, make new friends, have fun & form part of a team.

We will be training on Saturdays from 10 - 11am on the Mawsley Centre pitches. Our first session starts on January 11<sup>th</sup>. Subs will be just £2 per session (first 2 sessions free).

For more info or to sign up please contact Chris Tedore'  
Email: [christedore@hotmail.com](mailto:christedore@hotmail.com)  
Mobile: 0773 993 4726



### TOUCH RUGBY PLAYERS

#### WANTED!

Mawsley Touch Rugby are a successful club **actively looking for new players.**

**'Touch' is one of the world's fastest growing sports. It is NOT rugby union - it is independently governed and is a minimal contact sport with the focus on speed, agility and passing. So try something new....**

Saturdays 9.15 - 10.30am  
@ Mawsley Playing Field



- Mixed: All welcome (age 18+)
- No previous experience required
- Friendly club, meet new people
- Emphasis on fun and fitness
- Opportunity to play competitively
- Excellent way to keep fit
- Free trial session
- Annual membership only £30 (less than a month's gym membership)

[www.mawsleyvillage.co.uk](http://www.mawsleyvillage.co.uk)  
[www.mawsleytouchrugby.com](http://www.mawsleytouchrugby.com)  
[mawsleytrc@gmail.com](mailto:mawsleytrc@gmail.com)

## Loddington & Mawsley Cricket Club

The club is based at both Harrington Road, Loddington and Mawsley Playing Field.

The club currently fields teams in the Northants Cricket League in Division 1, 7 and 11 on Saturday afternoons throughout the summer from late April to the end of September. Matches are 50 overs per side in Division 1 and 45 in the other 2 Divisions. Other Senior sides are fielded on Sunday afternoons in the Rutland League Division 5 and Wednesdays in the local Geddington Midweek league. Ages for these games currently range from 14 to 54 in the club but there is no limit as a good enough/old enough policy is pursued.

A thriving Youth section is also in place with a 5 to 15 age range. The youngest take up the game with Kwik Cricket

soft ball games and then move on to Under 11 league cricket through to Under 15 hard ball cricket. Coaching is overseen by the highly respected head coach Karl Sanders. Beginners sessions start in November of each year and as players progress outdoor coaching is provided on various evenings during the summer months.

**New players of all abilities are always welcome.** Seniors' Indoor coaching commences on 20th January 2014 at Bishop Stopford School in Kettering.

For more info contact Karl Sanders 07903954360 or club Chairman Richard Baker 07725 864136.



# Get Fit - Keep Fit in 2014



This is the resolution that many of us will have made for this year - and it's not too late to start. And it couldn't be easier because there are an amazing number of groups and clubs in Mawsley that will help you exercise, keep fit and have fun. You have no excuse!

Here is a directory of some of those groups and clubs. It's not exhaustive - but it's a start. Details are missing from some but shouldn't be difficult to find if you are interested. Unless otherwise stated they take place at The Centre or on the Playing Field

What	When	Contact/info	
<b>Power Walking Group</b>	Thursdays 8pm	Caroline Stockford 07733 301985 Facebook: Mawsley power walking club	Just turn up, outside The Centre, for 30-40 mins speed walking round the village. Free
<b>Ladies Rounders</b>	Games Thurs eve. Training Sun afternoon	Karen: 07732 392621 Sam: 07584 244051	
<b>Boot Camp</b>	Sat am	Charlotte Browning	On the field
<b>Mawsley Squash</b>	Usually Tues eves	Facebook: Mawsley Squash	Informal group plays at K Leisure Centre
<b>Zumba</b>	Mon 8-9pm	077364 34494	
<b>Booiaka</b>	Sat 10 - 11am	Louise Slaven 07900 992803 louiseslaven@btinternet facebook 'Louise Slaven Dance'	£4
<b>Mawsley Cycling Club</b>	Sun approx. 8am	Facebook: Mawsley Cycling Club	Usually meet at Coffee at No 9. Check Facebook
<b>7 Aside football</b>	?	?	
<b>Short mat Bowls</b>	Mon 1.15 - 3.15	Alan Pritchard	Just turn up
<b>Line Dancing</b>	Thurs 1 - 2.30pm	Jacqui Wilson	Just turn up
<b>Touch Rugby</b>	Sat 9.15 - 10.30am	www.mawsleyvillage.co.uk	See page 16 for more info.
<b>Karate</b>	Mon 5.30pm	08445 610534 or 07885 294418	
<b>Kick Boxing</b>	Sat 11-12noon	07930 260705	Age 5+
<b>Junior Football</b>	Sat morning	Nick Hughes: 07771 988743	
<b>Dance Factory</b>	Tues, Wed, Thurs afternoons	077725 24797 thedance.factory@hotmail.co.uk	Children's dance
<b>Loddington &amp; Mawsley Cricket</b>	Various	Karl Sanders: 07903954360 Richard Baker: 07725 864136.	See article on page 16.
<b>Mawsley Community Choir</b>	Thurs 7.30pm	Frances Allbury: K790870	Singing is very good for your lungs, heart and general well-being!

## Mawsley Maintenance Man



**Jack Den-drijver**

jack@mawsley-maintenance-man.co.uk

**"For a small repair or regular care!"**

**call Jack on**

**07553 371596 or 01536 799076**

13 Long Breech, Mawsley,  
Northants



## OVENCLEAN®

*The original oven cleaning specialists*

*Ovensclean will transform your oven and  
put the sparkle back into your kitchen!*

- ✓ Friendly, professional and reliable
- ✓ Completely safe, eco-friendly cleaning system
- ✓ No fumes, no mess, no bother
- ✓ Removes grease, fat and burnt on carbon deposits from:

- |              |              |          |
|--------------|--------------|----------|
| ● Ovens      | ● Filters    | ● Hobs   |
| ● Grills     | ● BBQ's      | ● Ranges |
| ● Extractors | ● Microwaves | ● AGA's  |

*call Richard Joy today to book your oven clean*

**0800 840 7127/07791748458**

[www.ovenclean.com](http://www.ovenclean.com)



## Muddy Boots

PRE-SCHOOL

- We welcome children from 2 ½ to 5 years
- Friendly, experienced, committed & caring staff
- Open Mon - Fri, 8.45 - 15.00 in term time
- Excellent indoor/outdoor facilities
- Government funding & childcare vouchers accepted
- Good Ofsted, with 'outstanding' features

Tel: 01604 781838

Email: [muddybootsplaygroup@gmail.com](mailto:muddybootsplaygroup@gmail.com)

**Jubilee Drive, Walgrave**



[www.muddybootspreschool.com](http://www.muddybootspreschool.com)

## Infant Aquatics

### Baby & toddler swimming courses

Small, friendly classes from six weeks to four years. Building life long safety skills using our holistic approach in a fun environment.

Kettering area call 01858 565 713

Wellingborough area call 01933 674 505

**[www.infantaquatics.co.uk](http://www.infantaquatics.co.uk)**





**Coffee, Carols and Mince Pies at The Centre**  
**December 2013**

We sang a selection of our favourite carols, chosen by our members and ably accompanied by Gemma, Marilyn and Nigel.



We were overwhelmed by the generosity of our members who filled a car boot with tins and packets of food that we donated to St Jude's Food bank in Northampton Road, Kettering. Food is then distributed to people in crisis in Kettering and the surrounding areas.



## MAWSLEY COFFEE CLUB



**Thirty two of us enjoyed a delicious pre Christmas lunch at**  
**The Royal Oak in Walgrave**

Mawsley Coffee Club is for folk in the village who have retired or are approaching retirement. Our Winter/Spring programme is currently being arranged and will be distributed shortly. During the year, we aim to arrange something for everyone, including coffee mornings, outings to shopping centres, garden centres, theatres and other places of interest.

For more details phone Molly and John on 790 781 or Jean and David on 799 490.



**SANDRA**

*Clothing Alterations & Repairs*

*Ladies & Gents*

*Also*

*Silk Christening wear*

*Special Occasions Wear*

*Daywear and Handknits for*

*Babies and Children*

7 Brambleside  
Kettering  
NN16 9BH

**01536 521481**

### **FREE CALL OUT**

**NORTHAMPTONSHIRE DOMESTIC  
APPLIANCE SERVICES**

**REPAIRS, SUPPLY, SERVICE &  
INSTALLATION OF**

- GAS & ELECTRIC COOKERS
- WASHING MACHINES
- TUMBLE DRYERS
- DISHWASHERS
- FRIDGES



**SPECIALISTS IN:**  
**AEG, ZANUSSI, ELECTROLUX,  
BOSCH, NEFF, CANNON,  
HOTPOINT, AND ALL LEADING BRANDS**

**FRIENDLY, HONEST SERVICE**

**PHONE 01536 359596 or  
07963 331302**

## **Linnell** **Carpentry**

Covering all aspects of  
internal & external carpentry

- **Kitchens** •
- **Sash Window Repairs** •
- **Flooring** •
- **Doors** •
- **Fencing** •
- **Decking** •

1 Packer Road, Kettering, Northants NN15 7RP

**Tel: 01536 237615**

**Mob: 07904 418081**

Email: [info@linnellcarpentry.co.uk](mailto:info@linnellcarpentry.co.uk)  
[www.linnellcarpentry.co.uk](http://www.linnellcarpentry.co.uk)

# BUFFY'S BUFFER

MOBILE DOG GROOMING  
YOUR DOG'S BEST FRIEND

Our specially designed Mobile Grooming Vans are fully equipped to offer a convenient No Fuss, No Mess service.

Our vans and groomers offer a calm, stress free service for you and your dog. All our vans are fitted with safe, high quality equipment to meet your grooming requirements.

Free Nail  
Clipping  
Included

## Puppy's 1st Wash & Dry \*

Small dog - £14

Medium dog - £20

Large dog - £26

## Wash & Dry

Small dog - £18

Medium dog - £24

Large dog - £30

\* Prices may vary. For a full groom call for a quote.

## Equipment & Features

- 25m Electricity Hookup
- 160 litre Water tank & Water heater
- Water Pump
- Hydraulic Grooming Table
- Water bathe with Drop Down Door
- Blow Dryer
- Fully water resistant Lights, sockets & Electrical Appliances
- High Quality Non-Slip Floor
- Environmentally Friendly

Tel: 07563141415

buffysbuffermobilegroomer@hotmail.co.uk



Buffysbuffermobilegrooming



*It completely took away the hassle of taking my dog to the groomers. They bring the grooming parlour to you at a time to suit you.*

Jan Betts (Roade)

## ROB PRICE

**Automotive Services**

*Price Automotive Services Ltd*

146 Northampton Road  
Broughton  
Kettering  
Northamptonshire  
NN14 1NS

Telephone/Fax: 01536 790901  
Mobile: 07850 960350

- Petrol and Diesel MOTs
- Servicing and Repairs to any make, old and new
- Full diagnostic service
- Air conditioning service and refresh
- Clutches, brakes, welding, exhausts, shocks
- Free local collection and delivery or run-back service available
- For friendly and efficient service or advice please call

**01536 790901**



Thank you to all those who came and supported us at Mawsley Community Choir's inaugural concert at St Andrew's Church in Great Cransley at the beginning of December. We hope you enjoyed this as much as we did. Although the Choir had previously performed at MADS' talent show and also at the Mawsley Fun Day, this was our first full concert, representing another milestone since the Choir was established in February. We were delighted that Polished Brass joined us for this concert and helped to make it a success. Thank you also to the PCC at St Andrew's Church for allowing us to use the Church and to the Church ladies for arranging the interval refreshments.

Our new term is now underway and we will be rehearsing for our entry in two music festivals in Kettering and Milton Keynes in March. We are always very keen to recruit new members into the Choir – we are particularly in need of men for our tenor and bass sections. So if you feel the urge to have a sing, then come along and join us one Thursday evening when we meet in the meeting room at The Centre from 7.30 during term time (from 7pm on Quiz Night, the last Thursday of the month). You really don't need any previous experience, there are no auditions and you don't need to be able to read music.

We're a friendly bunch of people from all walks of life from age 19 to 71 and just enjoy singing together. Why not come along and give us a try? You can come along for one rehearsal for free and see what you think. If you decide to join (and we really hope you do!) then subscriptions are £2 a week.

Our motto sums up our ethos:

*Sing - make friends - spread happiness - Mawsley Community Choir*

For further details about the Choir, please contact our secretary Frances Allbury on K 790870.

Carole Lyttle  
Musical Director

## *Hair by Chris*

**At Strands**

**78 High Street, Broughton**



- *Friendly professional service for all the family*
- *Easy parking*
- *Evening appointments available*

**Call Chris 01536 791065**

## Annual General meeting for Mawsley Allotment Association

We shall be meeting at 7pm on Wednesday 29th January at the Centre, to review the success of the fruits of our labours during 2013 and to welcome any keen and interested gardeners who wish to take on an allotment in 2014. There are one or two available to take on immediately once the weather cheers up a little! So all welcome, see you there.





## Cub Scout leader required!

Mawsley Cub Scouts need a new Akela to run their weekly meetings.

Cubs are aged between 8 and 10½ years and form the group between Beavers and Scouts. Mawsley has a flourishing Cub Pack.

For more information please contact Shaun Thompstone at:

[mawsleyscoutgroupenquiries@gmail.com](mailto:mawsleyscoutgroupenquiries@gmail.com)

## 1st Mawsley Rainbow Unit at risk of closing down.



The 1st Mawsley Rainbow unit has been in existence for over 6 years and has seen girls progress through Rainbows, to Brownies and onto Guides- all within the village of Mawsley. Unfortunately, the current leader is retiring in July and the unit will close unless a new leader (or leaders - it can be a job shared!) can be found.

If you feel you could run/help the 18 girl unit, please contact Teresa Gable for further information at [mawsleyrainbows@hotmail.co.uk](mailto:mawsleyrainbows@hotmail.co.uk).

### Housing Benefit, Council Tax Support Drop in Surgery on:



**12<sup>th</sup> November 2013  
21<sup>st</sup> January 2014  
18<sup>th</sup> February 2014**

**11.00 am to 12.00 noon**

**In the Bar Lounge, The Centre  
Mawsley**

**Advice given on Welfare Reform and how it may affect  
your household, how to claim, benefit entitlement,  
reporting changes in circumstances and any other  
council issues**

**Kettering**  
Borough Council

*Teresa says 'I responded to a similar plea 2 years ago and have found my time running the unit great fun and have had plenty of support from the parents, but feel the unit needs a younger leader to take the group forward into the autumn of 2014.'*

Willow

## Chiropody / Podiatry Appointments

### Home visits available

All treatments for your foot problems, including: Corns, Verrucae, Calluses, Ingrown nails, Nail problems, Infections, Flat feet, Fallen arches, Aches & pains etc.

Also biomechanical examinations and orthotics to achieve correct foot alignment and relieve pain in the feet and legs.



For an appointment please contact  
Richard Pullar, (Registered Podiatrist),  
MSSCh. DipPodMed. MBChA

on 01604 880719 or 07734 348178

## Mobile Library

The next visits will be on  
**Sundays**

**9th February & 9th March  
from 2.15 - 3.15pm.**

The library parks on School Road, near the top of Cowslip Hill, and comes on the 2nd Sunday of the month.





Mawsley church have been very busy over the past few weeks! As well as our lovely interactive nativity play and a Christmas Day service we had a visit from Bishop John. We have also started a pilgrim group, which has been well attended and enjoyed by those involved.

Joel Bird who is helping lead the group explains...

'Hello! My name is Joel and I am an "intern" at Mawsley Church.

My favourite part of my work so far at Mawsley has been to help lead the "pilgrim" course. I know that a pilgrim course doesn't sound too thrilling but it is actually quite brilliant, and here's why: The Church of England has realised that you don't go from

being not a Christian; to suddenly become the Archbishop of Canterbury. They have realised that it can take a long journey for you to really feel you can declare yourself a Christian.

This course is perfect for people who would like to explore what being a Christian is, without being forced onto one of the many rotas that come with the life of a church, or lectured on what you are doing wrong. People on the course at the moment have expressed how much they enjoy being able to come along, discuss issues and ideas and ask any questions they want, without feeling stupid or talked down to. There will be a new intake of people on the pilgrim course this year, and so, please get in touch if you have any questions or would like to be involved.'

As always we meet every Sunday at The Centre at 10.30am. List of services below. Please don't hesitate to contact with any enquires.

#### Services

1st Sunday 10.30am SPACE Tea, coffee and bacon rolls with children's activities all in the main hall

2nd Sunday 10.30am Service with children's groups

3rd Sunday 10.30am All age service

4th Sunday 10.30am Communion service with children's groups

If you would like to find out more about Mawsley church then please contact either:

Rev. Brian Withington 01536 791373 or email [revdbrian@uwclub.net](mailto:revdbrian@uwclub.net) or

Churchwarden Anthea Cane 07596022525 or email [anthea76@hotmail.co.uk](mailto:anthea76@hotmail.co.uk)

*hate oven cleaning?*

**OVEN REVIVE**

*Oven cleaning at its best*

DOMESTIC & COMMERCIAL

- ☐ OVENS
- ☐ HOBS
- ☐ EXTRACTORS
- ☐ MICROWAVES

*Please call Paul*

07545 254975

*£5 off with this advert*



**ASHTON FURNITURE**

Eskdall Street, Kettering,  
Northants NN16 8RA

**Suppliers of Quality Oak, Ash,  
Pine & Painted Furniture**

**FREE delivery to MAWSLEY &  
10% off with this advert  
(except sale items)**

(01536) 484732

[www.ashtonfurniture.net](http://www.ashtonfurniture.net)  
[sales@ashtonfurniture.net](mailto:sales@ashtonfurniture.net)

## Mawsley works are progressing well

### Roads

Taylor Wimpey is pleased to report that the village's roads are close to being formally adopted by Northamptonshire County Council (NCC).

Phase 1 (Broughton Road) has already been transferred to the council, while the remaining phases of the village will be formally adopted once the storm water drainage system has been adopted by Anglian Water. Remedial works on the roads have all been carried out to adoptable NCC standards.

Griptrak has been selected as the contractor for the linking roads, with work due to begin in January and conclude by Easter.

The housebuilder has instructed MGWSP gritting service to continue gritting village roads as necessary throughout the winter months.

### Public open space and verges

Taylor Wimpey is pleased to report that the majority of public open space areas, including the eco-meadow, have now been formally transferred to Kettering Borough Council.

# Taylor Wimpey

The housebuilder is continuing to fund a landscape contractor to visit the village at least twice a month during growing seasons to keep the open spaces that remain in Taylor Wimpey East Midlands ownership tidy.

### Sewage network

The formal handover of the pumping station in Cowslip Hill to Anglian Water took place in November, while the handover of the pumping station in Hawthorne Avenue is expected to take place by the end of January.

The whole storm drainage system is due to be placed on to formal maintenance with Anglian Water after Easter, following the completion of the final remedial works across the system.

*To report issues or discuss any matters relating to public works at Mawsley Village, please contact Taylor Wimpey's Regional Project Manager Chris Leeson on 0116 281 6400.*

## plumbing & heating

**P. VINCENT**  
Mawsley Village

Local and reliable Gas Safe registered  
Heating Engineer

- Boiler installations, servicing and breakdowns
- Bathroom installations and general plumbing
- Landlord certificates
- No fees for estimates
- See Mawsley Forum for customer references

*All work insured, guaranteed  
and delivered with care*

Call Paul or Simon  
07838 191617 0787 2492913  
01536 791597



City &  
Guilts

WRAS  
APPROVED  
PRODUCT

## IAN RAMSAY

### QUALITY DECORATOR

*For all your interior & exterior  
decorating*

*Friendly, professional & reliable service*

**Interior & Exterior House Painting**  
**Skirting and Dado**  
**Wallpaper Hanging**  
**Floor & Wall Tiling Coving**  
**Flat Pack Assembly**

Please ask for any other requirements not listed

**Very Competitive Rates Satisfaction  
Guaranteed**

*For free, no obligation, estimate please call*

**07899 814014**

Or call at: 9 Padman's Close, Mawsley  
*References provided. Fully insured.*

## Bird Confusion

Of course it's not possible to say what the weather will be like by the time this issue of News and Views comes out, but it's fair to say that conditions before and after Christmas were unusual. Admittedly, it was windy and wet (normal for Mawsley!), but the unusual feature was the mildness of the air. This meant that every part of nature had to take stock of what was going on, and one or two villagers have remarked on how some birds in particular seemed confused.

Robins could be heard singing all through the night, establishing their territories, encouraged no doubt, not only by the mild temperatures, but also by the brightness of our well lit roads.

Some reported blackbirds up all hours, but both they and the robins will fall quiet if the weather gets markedly colder. They will sensibly be conserving their energy in the battle to survive through until spring.

Les Cottington



Sales and enquiries  
through the roof...



Office: 01536 790118

Mobile: 07970607085

Email: ray.jacobs@horts.co.uk

**RAY JACOBS ...**

..your local  
property  
consultant for  
Horts Estate  
Agents



### New Year Cheer

Happy New Year to villagers old and new. January is always a busy month; there is something about the start of a new year. Resolutions and promises are made and people often decide to buy or sell a property. Our statistics have shown over many years that even with its short days and long winter nights January has become a favourite with vendors and purchasers. You know who to call should you fall into either of these camps. I would really appreciate the business, my list of available properties is dwindling rapidly and is at its lowest level for years.

The flip side of fewer houses currently available for sale is that our Lettings arm has grown at a pace. Horts are ARLA accredited and now offer landlords a fully managed rentals service which reflects all the company values that have been the building blocks of our sales division. Should you prefer we also offer a Tenant Find service. If you are considering renting your home then please ask me for our Property Management Brochure.

Aside from questions about selling houses, something I am constantly asked by people is can you recommend a trustworthy Independent Financial Advisor. The answer to this is YES! I can honestly say I know the best in the business. So, if you are looking to re-mortgage or just see what the options are then call on the numbers above and I will be happy to pass on the details. This also applies to various trades and professions, from plumbers to will writers, web designers to roofers. All of them with proven track records and a similar working ethos to Horts.

### Unhappy with your current agent?

**For an unrivalled personal service who better  
than a fellow villager to sell the dream (and your**

### Still unsure whether to use Horts?

**Then check what our previous clients said  
about us on the independent website  
[www.allagents.co.uk](http://www.allagents.co.uk).**

Call us at any time for your property needs: **Ray and Emma Jacobs  
Horts Estate Agents**

Personal service from the moment we meet you to the moment we move you.

# History on our doorstep - all about Faxton

In the August 2003 edition of this newsletter Chris Cope (first resident of new Mawsley) submitted an article headed 'What's the link between Mawsley and the Victoria & Albert Museum?' The answer was 'The village of Faxton'.

He explained that Faxton and Mawsley had been closely linked throughout their history, both being finally deserted in the mid-20th century, and that parts of the Faxton Church of St Denis, which was demolished in 1958 are now at the V&A.



Amongst those items is this marble memorial to Sir Augustine Nichols (1559 - 1616) formerly in St Denis Church, Faxton and now in the Victoria & Albert Museum. Apparently the memorial was smashed during the demolition of the church and the V&A spent 3 years restoring it. Nichols was a judge of the Common Pleas under James 1 and Chancellor to Charles, Prince of Wales, who became Charles 1. He lived in Faxton for a while.

Since Chris wrote that article the information available on the internet has expanded tremendously so it is now a simple matter to view and read about what is at the V&A. Not only does the museum have the large memorial to Nichols but it also has two John Piper pictures of the church painted in 1940. (John Piper - who designed the etched windows at Coventry Cathedral - was one of several recognised artists who were engaged by the government in 1940 to record significant landmarks around the country.)



*The interior of the Church of St Denis, Faxton by John Piper showing the memorial in the top right hand corner. (Pen & wash 1940)*

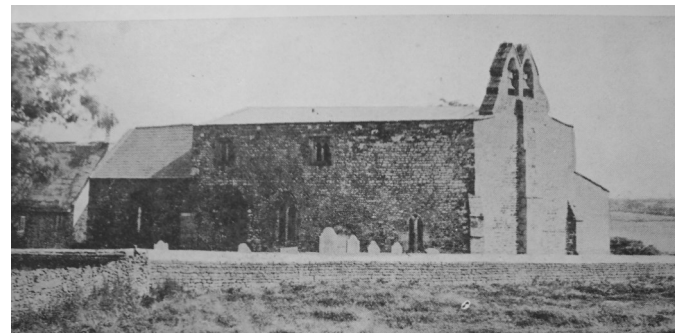
*Exterior of Faxton Church, 1940. Watercolour by John Piper.*



David Wilson has included more detailed information about Mawsley cum Faxton Parish in his history of our village.

The earliest located record of Mawsley was found in the Domesday survey of 1085, instigated by King William who, as Duke of Normandy, conquered England in 1066. It was an agricultural area with few dwellings apart from the hamlets of Mawsley and of Faxton (which is to be found along Mill Lane, the lane off the C31 Old Road between Old Gorse and Mawsley Woods, past Kites Hall and then right at Old Lodge for about half a mile - now across fields).

Faxton consisted of a Hall plus a number of dwellings and a chapelry of Lamport. The curate resided in Lamport and travelled to Faxton for Sunday services. By 1931 Mawsley parish was in the deanery of Rothwell, where the church is referred to as the Chapel of St. Denis, being a plain and low building of stone and, consisted of a chancel, nave and aisles and a bell-cote on the western gable, containing two bells. It was of mainly thirteenth century construction and after a long period of decline eventually ceased as a place of worship in 1939. There then followed a period of vandalism and the roof was also removed. The building was demolished in 1959.



*Photograph of Faxton Church (date unknown)*

The Parish Register dates from 1570 and the living was a chapelry annexed to the rectory at Lamport with a joint net yearly value of £419 including 100 acres of glebe land with residence in the gift of Sir Vere Isham, Bart, JP and held since 1903 by the Rev Walter Maristow Watkins-Pitchford, BA, of Trinity College Dublin; residing at Lamport.

The principle landowners of Faxton in 1931 were Sir Vere Isham, and J G Chambers and the soil was principally pasture land and was farmed mainly by the inhabitants of other parishes. The parish area was 1851 acres and the population from the 1921 census was 37 people. The ecclesiastical census of 30<sup>th</sup> March 1851 records that there was space for 150 for public worship, that the estimated number attending divine service on Sunday March 30 1851 was: General Congregation 30, Sunday Scholars 11, Total 41. Remarks: there is only one service on a Sunday.

**How did Faxton compare with Mawsley?** They were both small hamlets, although Faxton had a Hall and a church and a larger population than Mawsley. The ‘Hearth Tax Lists’ show that there were 30 households in Faxton in 1662 and 34 households in 1674. Despite being occupied during the first half of the 20th century Faxton was only ever accessible by horse-drawn vehicles as none of the roads leading to it were made up to accommodate motor vehicles. Both Mawsley and Faxton were finally deserted around 1940.

The combined population of the Parish of Faxton cum Mawsley as shown in the National Census was generally low and peaked in the decade 1831 – 1841. The last Census for the Parish of Faxton cum Mawsley is that of 1921 when there were 37 people living in Faxton and 13 in Mawsley. Thereafter, the residents of both Faxton and Mawsley were included within the Census for Loddington, for which there is at this time no ready access to detail but only the population totals.

Population of Faxton & Mawsley from the National Census														
	1801	1811	1821	1831	1841	1851	1861	1871	1881	1891	1901	1911	1921	1931
Faxton	51	67	85	103	90	95	79	73	55	46	33	21	37	L'ton
Mawsley					15		11	16	8	10	24	20	13	

Faxton has now almost completely disappeared although there are still signs on the ground of the Church and former houses. It is a pleasant walk to Faxton, from where you can continue to Old for refreshment at The White Horse.

Turn right out of Mawsley and then first left into Mill Lane, the back road to Old. Mill Lane bears right and then left and shortly after there is a well marked track to Faxton off to the right. The village remains are in fields at the end of this track.

Mawsley News & Views is printed by

01536 533275



Kitchen & Bathroom Specialists



### Kitchens

Designed for you, with your lifestyle and priorities in mind.

From a small swap to a new extended design, we can take care of every little detail!



### Bathrooms

Clean lines, lovely warm lighting and a bathroom to relax in, we source, design, and fully install, so you can relax from day one.

### About PMA

We have a saying, NOTHING IS IMPOSSIBLE!

A positive, mental, attitude to your budget, time frame and your home.

We take great care and look after you for 2 YEARS AFTER, with a free call out warranty!

Good old fashioned service included in our price.

All organised, designed and arranged with a feminine touch.

Rookery View, Mawsley NN14 1TR
t: 01536 799 076
m: 07553 371 598
e: info@pma-uk.co
www.pma-uk.co

## From the Editor

I am nervously awaiting the response to the New Year Honours list on pages 6 & 7. The project was always fraught with the danger of missing people out but I decided it was better to attempt it than not. I attend many of the village meetings and often hear the complaint, 'No one will volunteer. It's always the same people.' I don't think that is the case and I think this list proves it. Literally hundreds of you volunteer for roles that you feel comfortable and confident about and for which you have the time. Please keep it up.

Feedback on the History on our Doorstep features has been positive but I have now run out of history topics and would welcome more. Perhaps we don't have to look back hundreds of years. When preparing this one about Faxton I had to look back ten years to the Mawsley Newsletter of August 2003 and was surprised by the events reported in it. It reminded me how far we have moved on since then. It included:

- Drawings of the proposed design for the Community Centre (later reduced in scale by the developer on grounds of cost)
- Appointment of Interim Governors for the new school that was due to open a year later
- The arrival of the new temporary doctors surgery (portacabins on Nethertown Way nicknamed HMS Mawsley on account of being large, ugly and battleship grey)
- Announcement that Broadband was expected in the village by November 2003
- Junior Saturday Football Club was starting that month
- The playing field came into temporary use for the first time in June that year (Temporary because it was going to be out of use while The Centre was built.)
- There were 258 houses in the village at the time and the Great Manhole Cover Challenge was won, by a narrow margin, by a house in Link Lane which had 8 in its back garden and 2 in the front!

Many thanks for all your contributions. Please let me have your suggestions for future articles, historical or not, and please continue to send your announcements, pictures, reports and letters.

Pat Rowley, Editor

Mawsley Contact Details		
<b>Mawsley Villagers Association (MVA)</b> <a href="mailto:mva@mawsleyvillage.co.uk">mva@mawsleyvillage.co.uk</a> Chair: Rob Bailey 790557 Other positions vacant	<b>Neighbourhood Watch Village Co-ordinator</b> Christine McIvor <a href="mailto:chrismcivor@hotmail.com">chrismcivor@hotmail.com</a>	<b>Mawsley CP School</b> 799182 Headteacher: Mrs Elaine Wright
<b>Mawsley Parish Council</b> <a href="mailto:pc@mawsleyvillage.co.uk">pc@mawsleyvillage.co.uk</a> Chair: Cllr. Richard Barnwell 07885 431520 Clerk: Diana MacCarthy <a href="mailto:mawsleyclerk@tiscali.co.uk">mawsleyclerk@tiscali.co.uk</a>	<b>Mawsley Church</b> Rev'd Canon Brian Withington K 791373 <a href="mailto:revdbrian@uwclub.net">revdbrian@uwclub.net</a> Anthea Cane (Ch. Warden) 07596022525 <a href="mailto:anthea76@hotmail.co.uk">anthea76@hotmail.co.uk</a>	<b>Taylor Wimpey</b> Chris Leeson 0116 281 6400
<b>The Centre @ Mawsley</b> Tel: 799528 <a href="http://www.thecentreatmawsley.co.uk">www.thecentreatmawsley.co.uk</a> <a href="mailto:debbie@thecentreatmawsley.co.uk">debbie@thecentreatmawsley.co.uk</a>	<b>Northamptonshire County Council</b> Cllr. Jim Hakewill 01858 467686 <a href="mailto:jhakewill@northamptonshire.gov.uk">jhakewill@northamptonshire.gov.uk</a>	<b>Kettering Borough Council</b> Cllr. Jim Hakewill 01858 467686 <a href="mailto:jimhakewill@kettering.gov.uk">jimhakewill@kettering.gov.uk</a> Cllr. Cliff Morton <a href="mailto:cliffmoreton@kettering.gov.uk">cliffmoreton@kettering.gov.uk</a>
<b>Mawsley Medical</b> 791300	<b>MP Philip Hollobone</b> 0207 2198373 or 07979 850126 <a href="mailto:hollobonep@parliament.uk">hollobonep@parliament.uk</a>	Community Development Officer Tim Bellamy 534355 <a href="mailto:timbellamy@kettering.gov.uk">timbellamy@kettering.gov.uk</a>
		<b>Mawsley News &amp; Views Editor</b> Pat Rowley 791881 <a href="mailto:rowleypj@btinternet.com">rowleypj@btinternet.com</a>

**Next News & Views will be out on  
19th March 2014  
Copy date is Friday 7th March  
Adverts and newsletter items to  
Pat Rowley Tel: 791881 [rowleypj@btinternet.com](mailto:rowleypj@btinternet.com)**