



# Mawsley News & Views

March 2013

## There's more!

### The new play area will now include a proper BMX track!

You will recall from the last News & Views that I said that a BMX track would have to be put back into a Phase 2 until we could raise some more money.

Well, the good news is that Kettering Borough Council has come forward with the money! Indeed they have offered a grant of up to £7,000 - which means we will be able to install a really good track; a decent length and with a hard-wearing surface. On behalf of the village many thanks to them for this most considerate gesture. *(Editor: And many thanks to you, Bob, for approaching KBC on our behalf!)*

Meanwhile detailed planning has been continuing re the play area. We are still hopeful of it being in place by Easter, though this is dependent on delivery of the play equipment; it's looking a bit tight at the moment! Excavation and preparatory ground work will start shortly anyway.

The real fly in the ointment is the wet state of the ground. Unless there is more heavy rain this won't affect excavations etc., but it is likely to stay too wet for a while to enable the compaction of soil into humps for the BMX track. I guess you could say this has at least moved from a "Potential sometime Phase 2" to a "Definite quite soon Phase 1b"!

Rest assured that you will be able to use everything just as soon as it has completed the official safety inspections. But if you see someone spinning round whilst dangling upside down it might just mean I got there before you!

Bob Littler



### Hot off the press - Centre Manager appointed!!

After a fairly lengthy process starting in December, The Centre is pleased to announce that they have (a few hours before going to press) appointed Steve Buckle to The Centre Manager position.

Running The Centre has many challenges; financial, commercial and operational and we see the role of Centre Manager as a vital part of the continual development of this great facility, to become ever more inclusive and relevant to ALL villagers.

We have great plans for 2013 and if you would like to help both the new Centre Manager and the rest of the Management team to shape the future then please give me a shout. The Centre does not need lots of your time to make a big difference.

[simonwisdom@gmail.com](mailto:simonwisdom@gmail.com) or 07527 225216

Simon Wisdom

*Editor: Many of you will know Steve Buckle. He has lived in Mawsley since 2003 with his wife Cheryl and daughters Izzy and Lola (who have not been here quite that long) and has been involved with many aspects of village life. More info next time.*

#### Inside News & Views

The Centre	page 2
MVA	page 3
Parish Council	pages 4 & 5
Allotments	page 7
Letters	pages 10, 11, 12
Easter Fun	pages 13, 14, 15
What's On	pages 14, 15
Panto: Aladdin	pages 16, 17
School	page 18
Village groups	pages 20, 21, 22
Local history	page 23
Churches	page 25 & 26
Local authority info	page 27
Contacts	page 28



## Graham Leah: farewell and thank you

As some of you may know Graham moved out of the village last Summer. Once no longer a resident he could no longer be a director of The Centre or of the MVA; however we did allow him to carry on doing vast amounts of work as a non-executive director (i.e. lots of work but no vote).

But now he has decided that it's time to make a complete break and concentrate on life in his new locality.

It would take much paper and time to list all the contributions that Graham has made to Mawsley over the years. A consistent theme throughout them has been a passion for the village, and an unerring blend of commercial insight allied to community awareness.

He has been a fantastic help to me; I could always rely on Graham for a perceptive view of things and thus what to do (or not).

So thank you Graham; without you the village would not be the great place to live in that it is today.

We wish you well.

Bob Littler

*Editor: Now that he has moved on I can reveal that Graham wrote occasional pieces for the newsletter under the pen name of Mr G. Grump. Another reason to miss him!*

## And it's farewell from me!

At the beginning of January I told my director colleagues at The Centre that I would be resigning as a director once a new manager had been appointed.

I will also resign as a director of the MVA once the new playground is completed.

There is no great story to this; simply that:

- I have been doing this for over 11 years; which is long enough.
- I have developed new voluntary work interest outside the village, which takes up to 3 days a week. I can't complain about this time as it is self-indulgent and fun!
- It is time for new blood. The Centre, the MVA and indeed the village, needs a supply of ideas to take things forward over the next few years; thinking that is not encumbered with history and pre-conceived views.

Implicit in the final point is a call to you. How the village develops and changes should be led by the village, not by external influences. But external influences will be the dictator unless you take action. Action might mean an hour or two a month; more if you wish. Equally you may wish to take a lead on things that most concern you.

I would particularly like to thank all those who have given me help, advice and support over those 11 years. It is a long list so I won't attempt to name them; but they know who they are.

Bob Littler

Bob's P.S. - my final comment.

At last week's MVA meeting a number of new MVA Members (very welcome!) talked about how The Centre is perceived by some people in the village - that it operates for the benefit of The Centre as a company, rather than for the village.

Nothing could be further from the truth. The Centre has always been, and will always be, focused entirely on meeting the needs of the village. It is set up as a company because that is the best way to manage that; and to manage an expensive and complex building. It cannot be a village hall; not least as it then could not have a regular bar. (Each event would have to apply for its own licence).

But if it isn't meeting the needs of the village then you must tell us. We keep asking.....



Are you looking for a venue for a celebration?

**Free Friday Night main hall hire at The Centre.**

Every Friday evening during April, May and June 2013.

Contact The Centre on 799528 for more information and to make a booking.

*Details on all events at The Centre can be found at*

[www.thecentreatmawsley.co.uk](http://www.thecentreatmawsley.co.uk)

*That's also the place to see the programme for our big screen sports coverage.*

# Mawsley Villagers Association Update

## Will there be a Fun Day this year?

At the moment we don't know; albeit we have pencilled in **13<sup>th</sup> July** as the day.

Sarah Hart, who has organised it for the last 2 years, is not able to do it again. The Centre will take on the role of overall project management, but cannot take on all aspects of the project. The MVA will also help and guide, but doesn't have the people able and available this year.

The scale and format is open to discussion; it may be much smaller - perhaps not - but it would certainly be a shame and loss to the village if it didn't go ahead.

So you can guess where I am heading next:

**YOUR HELP IS NEEDED!!!!**

The Centre will identify the major activities in the hope that either individuals or small groups will each take charge of one of them. This list will be published in the next News & Views.

In the meantime early calls, emails, pigeon notes offering help to the MVA ([mva@mawsleyvillage.co.uk](mailto:mva@mawsleyvillage.co.uk)).

Bob Littler

## Mawsley Touch Rugby Club

would like to say a big thank you and express our gratitude to the MVA for the financial assistance provided in purchasing some necessary equipment. This has supported us in becoming firmly established as a community team.

The MVA has also awarded other grants recently to MADS (to help with Santa's Grotto) and to the Baby & Toddler Group (for materials and hospitality).

If your group needs a small grant for a community project you are welcome to apply to the MVA.

*Editor: I have been aware of Bob's decision to resign from TCAM and the MVA for a few weeks now but its consequences are only slowly beginning to sink in.*

*Right from the beginning Bob has worked voluntarily almost full time on village issues whether wearing his MVA, Centre or Parish Council hat. There are many facilities and, more importantly, a 'can do' ethos that we have in Mawsley that have been his doing. I will be reserving space in the next edition of News & Views for any pictures, anecdotes or messages about Bob's contribution to the village from any of you who would like to send them in. Do it now!*

## Baby & Toddler Group



In July the Baby & Toddler team will lose one of its key members. As many of you may know Mandy Priestley will be moving to Somerset with her family. She will leave a big hole in the team and we are looking for people who feel they could help to fill this. If you are able to volunteer some of your time on a Thursday morning to help the group continue to flourish please come and have a chat with one of the team.

The group has continued to welcome more new members as 2013 has rolled on.

Before February half term we looked at the topic of winter and now we are exploring stories.

The group is open to all preschool children from birth upwards.-

**We meet every Thursday during term time from 9.15am till 11am at The Centre.**

For more information call Laura on 0774 2108 488

## MVA accounts

The finalised audited MVA 2011 accounts for the MVA, as submitted to Companies House, have now been posted on the MVA website:

<http://www.mawsleyvillage.co.uk/mawsley-villagers-association-0>

(They are listed at the top of the second column of pdfs.)

Currently cash in the bank totals £17,512.

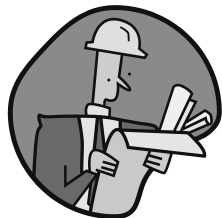
The main current commitment is £6,700 towards the cost of the Older Children's Play Area. (This is less than the total £9,700 contribution towards the play area as outlined in the previous News & Views as some monies have already been lodged with Biffaward, as a part of the complicated grant process; we will get all that money back with the grant itself).

During 2013 The Centre will pay back to the MVA a total of £4,460, as repayment of loans towards the costs of the server, the mood lighting in the main hall, and the new fabric of the marquee. The outstanding loan repayments to be paid thereafter are currently £1,960 re the marquee.

As ever I say that if you want the MVA to be helping / doing / providing something for the village then please let us know.

Bob Littler

# Mawsley Parish Council Update



## Planning

It may not be well known but every planning application for Mawsley considered by the Kettering Borough Council planning committee is also forwarded to Mawsley Parish Council for our comments. We can only comment on any application in terms of specific material planning considerations, a limitation that applies to everyone commenting on an application. We do have the advantage of being much closer to the site than our colleagues at KBC, to which any application applies. So we can often make a judgement based on greater knowledge of the potential impact. Our views are only part of the consideration at planning committee level but they do take note of what we say.

So if there are ever any planning applications you're either concerned about or actively pursuing yourselves and you think there's something we should know about them, when considering our response to the committee, then you can always let us know. There are strict and often tight timescales within which we must respond but if you're directly involved or affected by a planning application you'll almost certainly be aware of the deadlines anyway. So as long as you get your comments to us before we have to consider an application we can take them on board in our decision making process. That doesn't mean you shouldn't also comment, if you feel you need to, to KBC directly. But with more knowledge of any given situation, comes better understanding and so a better, more-considered decision can be made.

## Precept

The precept is an amount of money Mawsley Parish Council asks Kettering Borough Council to add to the Council Tax you pay, to fund the planned expenditure in Mawsley for the coming financial year. This is payable in April to the Parish Council but decide in January on an amount to be precepted, to give KBC time to sort out the paperwork etc. So at January's Parish Council meeting, we talked about what spending plans we had for the 2013/2014 financial year, to be able to get enough money via the precept to fund them.

We've highlighted in the past that our biggest financial responsibility is The Centre At Mawsley. In discussions over the last several months, we've arrived at a plan looking ahead 5 years, to make sure this valuable community facility continues to offer excellent facilities to the village and to other customers as well. I've talked before in News and Views about how equipment, fixtures and fittings are showing signs of age and wearing out (aren't we all!). These will need maintaining and/or replacing in the coming months and years, alongside the normal maintenance requirement of such a facility. All this of course costs money, but if we don't do it, we run the risk of losing money by not being as attractive or useful a venue for events. So we must spend the money to keep the place in a useful and respectable condition, hopefully improving the facilities on offer as we go.

The precept we decided on is £60000 for the 2013/2014 financial year. In a time of economic hardship, austerity and cuts, cuts, cuts; this is an increase of £25000. A big leap, admittedly, but it only actually represents an increase in Council Tax on a band D property of around £28 for the year (before any rebates that may apply). It will bring the Mawsley element of the Council Tax up to around £44 for a Band A property, £67 for Band D, up to £134 for band H, or around 4-5% of a full Council Tax bill. I'd say that's pretty good value for the facility we have in Mawsley, which is the envy of many other communities, and has received high praise by people attending functions, including the Mayor of Kettering himself.

As always, the staff and Directors of The Centre do a great job keeping the place as efficient and well run as it is. With our support, and the continued support, suggestions and attendance of you, the villagers, we hope and believe our community facility will go from strength to strength.

Peter Thomas, Chair, Mawsley Parish Council



## Tax, Accounting and Business Advice

Qualified Chartered Accountant  
with over twenty years' experience

If you need help with your tax return, VAT returns,  
accounts preparation or business advice then please  
give us a call

We live and work in Mawsley

07770 305777

[www.amiaccounting.co.uk](http://www.amiaccounting.co.uk)

ICAEW  
CHARTERED  
ACCOUNTANTS





One of the topics discussed at the last Parish Council meeting was the extent of speeding and inconsiderate parking in the village, much of which was attributed to those engaged on the daily school run.

Our local Police Constable has written about parking on page 10. The Parish Council discussed the following scheme to tackle speeding in Mawsley.

### COMMUNITY SPEED WATCH

Mawsley has been asked whether they would like to take part in the **Community Speed Watch** which enables local people to become actively involved in helping to slow down traffic in 30mph zones within their community.

Members of the community are trained in the use of hand-held speed monitoring devices to track the speed of motorists in their parish. The Force will then send out warning letters to the drivers.

Each community involved in the programme will receive support from their local Safer Community Team as well as a vehicle activated speed sign to highlight to motorists how fast they are travelling.

We would require a co-ordinator and at least 10 volunteers to operate at the roadside for short stints over 3 weeks within a 6 week period. Further we also need 20% of the electoral roll to commit to the program.

**If you are interested in taking part please contact:**  
**Diana MacCarthy, Parish Clerk; [mawsleyclerk@tiscali.co.uk](mailto:mawsleyclerk@tiscali.co.uk)**  
**by 13th March.**

Parish Council Meetings are held at 7.30pm at The Centre on the third Monday of the month. Future dates are:

**Monday 18th March & Monday 15th April**

Members of the public are welcome to attend.

The draft minutes of the February meeting are now on the village website.

The Agenda for each meeting is put on the website three days before, so you can usually pick it up on Thursday or Friday before a Monday meeting.

## A co-ordinated NHW scheme for Mawsley



A message from Councillor Christine McIvor

As a resident of Mawsley village, I am interested in the Neighbourhood Watch scheme and have volunteered to take up the role of NHW Mawsley Village Co-ordinator.

The role involves, amongst other things, giving NHW co-ordinators in Mawsley a central link. This will make it easier for the co-ordinators to keep each other informed of how the scheme is working on their patch and give co-ordinators an opportunity to meet each other and share ideas. I look forward to taking up the role and becoming involved in this worthwhile scheme.

I will be in touch with all co-ordinators very soon.

### Other topics being discussed by the Parish Council :

**Use of the Pub Site.** The owners want to sell it because it is not suitable for a pub. Adrian Allen, of Diamond Estates, wants to discover what types of use would have village support. He has suggested bungalows. Suggestions from the village were a commercially run Gym & Leisure Centre or a Church.

**Roman Remains.** There are roman artefacts found during the construction of Mawsley which it might be possible to display permanently at The Centre.

**Rubbish bins and dog bins.** Locations are being agreed with KBC.

## GreenFeat

Garden Design & Construction

- ◆ All types of construction
- ◆ A design to suit your lifestyle
- ◆ Qualified reliable staff
- ◆ Completed gardens can be viewed  
.....always high standards

**07540 976639**

**[john@greenfeat.co.uk](mailto:john@greenfeat.co.uk)**

**[www.greenfeat.co.uk](http://www.greenfeat.co.uk)**



The Association of  
Professional Landscapers



# Punks & Pin-Ups



## HAIRDRESSING

Stockists of:

PAUL MITCHELL

AMERICAN CREW

TIGI

GHD

JOICO

TANGLE TEEZERS

MOROCCAN OIL

WE ALSO DO THE

EXCLUSIVE HAIR

DEFRIZZING/

SMOOTHING SYSTEM

FROM KEBELO FROM £99

- Easy Free parking
- Visa/Mastercard accepted
- 25% discount for students Mon - Wed
- Free consultations
- Free Refreshments
- Free fringe trims
- We have highly trained stylists available 7 days a week to suit your needs
- We offer a luxury service with affordable pricing for all the family

( formerly idolz  
hairdressing)

### Open 7 Days

(except Bank Holidays)

Sun	10.00 - 4pm
Mon	9.30 - 6pm
Tues	9.30 - 6pm
<i>(Tues is 15% discount day)</i>	
Wed	9.30 - 8pm
Thurs	9.30 - 8pm
Fri	9.30 - 6pm
Sat	9.00 - 4pm

DON'T FORGET MOTHERS DAY

WE HAVE GIFT VOUCHERS AND A MOTHERS DAY WEEK OFFER

From Sunday 3rd to Sunday 10th March have a Cut & Finish and we will cut & finish your Mum's hair FOR FREE (just mention this ad)

JOIN US ON FACEBOOK AND @andpinups ON TWITTER FOR OTHER OFFERS, RECRUITMENT, ETC

01536 790540

Find us on  
**facebook**

5 BARNWELL COURT,  
MAWSLEY,  
NN141FG

# Mawsley Allotments

## Mawsley Open Gardens

is taking a break this year and hopes to return in 2014.

In the meantime we wish you happy gardening and a better summer than last year.



Don't forget to keep feeding the birds and keeping their water topped up.



## Would you like your own Allotment?

The Mawsley Allotment Association has a number of plots available for annual lease, starting April 1<sup>st</sup>.

To find out more or to request a plot:  
Email Andrew Christie: [christie3549@sky.com](mailto:christie3549@sky.com)

## **NEW SUMMER**

### WEIGHT LOSS CHALLENGE

starting APRIL-JULY

MAWSLEY

&

W'BORO

Town Centre

***Are you serious  
about  
losing weight  
THIS SUMMER?***

***what do you  
have to  
lose?***



Classes are Fun, Simple & Magical

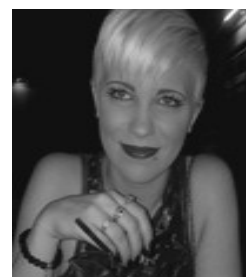


Join the 12 week Challenge NOW... AND RECEIVE...

- \* Introductory price of £39 (for the full 12 weeks!!)
- \* FREE Wellness Evaluation (body fat%/BMI/Visceral fat/RDProtein and more)

**Simply Pre-register NOW - PAY LATER**

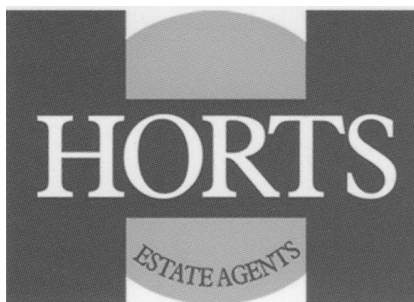
**[www.divinedesignwellnesscoach.com](http://www.divinedesignwellnesscoach.com)**



**Text 'lose4ever+name'**  
**Call: Tricia 07989 228 973**  
**or FACEBOOK me**  
**[triciacampbell74](https://www.facebook.com/triciacampbell74)**

**Text 'yummymummy+name'**  
**Call: Sherrie 07787 417 108**  
**or FACEBOOK me**  
**[sherrie-jayne parker](https://www.facebook.com/sherrie-jayne-parker)**

Sales and enquiries  
through the roof...



Office: 01536 790118

Mobile: 07970607085

Email: ray.jacobs@horts.co.uk

**RAY JACOBS ...**

..your local  
property  
consultant for  
Horts Estate  
Agents



### NEW YEAR CHEER

Last years momentum has followed through into 2013. January and February are usually relatively quiet months for sales, however the start to this year has exceeded all expectations. Eleven houses sold subject to contract since the turn of the year, means that once again, i am asking/pleading/begging for more village properties.

- S** 5 bedroom properties in Old Gorse Way, Cransley Rise, Jibwood.
- O** 4 bedroom property in Warren End.
- L** 3 bedroom properties in Old Gorse Way, Stoneyfield, Long Breech, School Road.
- D** 2 bedroom properties in Long Breech, Scholars Row x2.

What are the reasons for these results? I believe there are many;

1. Our Northampton presence means we bring a whole new batch of potential buyers to your door, people from Northampton looking in the traditional Northern Villages will now consider Mawsley on equal terms with Old/Scadwell/Holcot/Brixworth/Moulton etc.
2. Our marketing is second to none! We advertise on ALL the main internet portals, Rightmove, Prime Location, Find A Property, Zoopla etc. I know my two main competitors in Mawsley, who are large Kettering based agents, advertise on Rightmove ONLY! Are they really offering value for their fees when they are restricting the amount of potential buyers to your property?
3. Accurate and honest asking prices are another key feature as to why Horts sell so successfully. Once again I have seen numerous cases in Mawsley of an agent overvaluing a property just to win the business. This just leads to frustration for all parties as there are few viewings and certainly no offers! The agent then badgers the vendor to drop to the realistic marketing price that it should have been in the first place, blaming everyone but himself. Personally I would rather turn down business than win it by overvaluing. It really is a waste of time for all concerned, and gives all Estate Agents a bad reputation.
4. Personal service is another key feature of how we are different. If you instruct Horts you get one dedicated agent ( ME! ) dealing with your sale from start to finish. That means you and your buyer can speak to me directly SEVEN days a week, which is obviously much better than trying to communicate with a faceless person in an office who may, or may not, get back to you or your buyer in a few days. This service is THE reason we sell so many houses and have such a good reputation. Check out what our previous vendors and buyers have said about us on [www.allagents.co.uk](http://www.allagents.co.uk). There are 9500 agents in the country and Horts is currently ranked in the top 15.
5. I live in Mawsley and know the village inside out. Who better to sell your house and our lovely village than someone passionate about the area? Also part of my fee goes to Friends Of Mawsley School raising funds for our fantastic Primary School.

---

**Still unsure whether to use Horts? Then check what our previous clients said about us on the independent website [www.allagents.co.uk](http://www.allagents.co.uk).**

## Marshall Stanley Day



Mawsley has lost one of its great characters, as we mourn the passing of Marshall Stanley Day.

For many of us, our friendship with Marsh had developed over a pint or two at The Centre and he would regale to us stories of his past or generally put the world to rights. Marshall was a man of many talents, be it musician, engineer, electrician, sportsman and “comedian”. He was a keen supporter of Mawsley 4ths cricket team and was possibly their biggest critic. Thanks go to him for the photocopying and collation of Mawsley News and Views.

Marshall quickly became a true and valued friend to all those villagers that had both the pleasure and the privilege to have met him. Marshall will be sadly missed, but he will remain in our hearts forever.

Our thoughts are with Diane and his family at this time.

Steve Thorpe, Martin Bentley & Brian Tuite

### Marshall and his Flag

You may have noticed that we flew St George’s flag at half mast on the day of Marshall’s funeral.

Why the flag of St George? Why not the Union flag?

The main reason was because Marshall was an English man through and through and whatever he did, England and the flag of St. George was at its heart. He was so proud to represent and serve his country in sport and many other ways. He often performed the duty of Standard Bearer for the British Legion which Standard, of course, has the Union flag in the corner.

It was a pleasure to know you Marshall and I and many other people will always be glad that our paths crossed with yours for however long a time.

Vic Cope

### THANK YOU TO YOU ALL FROM MARSHALL’S FAMILY

Dad would have been overwhelmed at the kindness and generosity offered to us by you all and I don’t think that there are enough words to express our own gratitude.

Thank you all so very much for making this very difficult time just a little bit easier. It is an absolute pleasure to have gotten to know you all so much better and we understand now why Dad wanted to spend so much time over the Centre! There have been so many genuinely kind offers extended to us over the past couple of months and we thank each and every one of you. In particular but certainly not alone, we thank you so much for taking care of the catering at the funeral – we realise what a mammoth task this must have been and Dad would have been so proud.

God bless you all and continue to be led by that bathroom light!  
*(Editor: The secret is out. Apparently you can see Marshall’s bathroom light from The Centre bar. When it went out Marshall and his mates knew that Diane had gone to bed so they had time for one more!)*

### FREE CALL OUT

**NORTHAMPTONSHIRE DOMESTIC  
APPLIANCE SERVICES**

**REPAIRS, SUPPLY, SERVICE &  
INSTALLATION OF**

- GAS & ELECTRIC COOKERS
- WASHING MACHINES
- TUMBLE DRYERS
- DISHWASHERS
- FRIDGES



**SPECIALISTS IN:**

**AEG, ZANUSSI, ELECTROLUX,  
BOSCH, NEFF, CANNON,  
HOTPOINT, AND ALL LEADING BRANDS**

**FRIENDLY, HONEST SERVICE**

**PHONE 01536 359596 or  
07963 331302**

**Kettering  
Domestic  
Cleaning**

**0845 117 4444**

Don’t do your dirty work. We can do your Domestic Cleaning professionally!

Cleaning your house after a long day at work is probably the last thing you need. You deserve to come home & find that everything is clean, tidy and welcoming. Kettering Domestic Cleaning is a reliable team of efficient, honest & hardworking Cleaners with years of professional experience in housecleaning for domestic residences. We can do a one-off clean or a weekly or fortnightly

Call us now on our 24 hour helpline **0845 117 4444** to discuss your domestic cleaning needs - we will be happy to make a home visit to provide a tailored quotation.

## Letters to the Editor



Dear Editor

I've had a few questions recently about parking in Mawsley. As it stands at the moment we can't do as much as we might because most of the roads are not yet adopted, but having said that I would ask people to park responsibly and with consideration, as most of the problems that I have come across would have been offences if the roads were adopted. One particular example is parking on junctions. This can be deemed an unnecessary obstruction of the highway. I would expect that people who hold a full driving licence would also know the Highway Code and observe it.

The main crime priority at the moment is Burglary, Theft from and of motor vehicles. Please make sure that all your property is secure and that you do not leave anything on display in your vehicles. We are working very hard to target offenders and have proactive teams working in all areas. Please ring the Police if you see anything suspicious dialling 999 if you think there is a crime in progress or 101 for non-emergency.

Kind regards

PC 1243 Martin Penhallow | Desborough Police Station.  
Northamptonshire North | Northamptonshire Police

\*Telephone 101/999

\* Email [martin.penhallow@northants.pnn.police.uk](mailto:martin.penhallow@northants.pnn.police.uk)

### Fly-tipping

I have just reported to Daventry D.C. the fly tipping of tyres at the top end of Mill Lane (the back road to Old). This is the third time in the last 12 months that tyres have been dumped either in Loddington Road close to the Copse entrance to the village or in Mill Lane. There have also been several cases of fly -tipping of garden waste and household waste in Mill Lane during the same period.

Both Daventry and Kettering Councils have been very prompt in clearing up after the reporting of the dumping but the culprits have gone undetected. The tipping is probably trade waste as I'm sure Mawsley residents are responsible enough to take their waste to the Council dumps. However I would like to remind residents that if they use a contractor to clear away garden and household rubbish that they ensure the contractor disposes of it correctly. As with the serial tyre dumper if people could keep a look out and report any incident to the Council.

Many thanks

Roger Harrop

*Editor: The Mawsley side of the C31 is the responsibility of Kettering Borough Council. The other side falls to Daventry.*

### Noisy dogs

I would like to ask residents on School Road near the post box who have dogs to try and stop them from constantly barking every evening it's very annoying for people with small children or those who have turned in for the night.

Name supplied



# White Knight Decorating Ltd

37 Crescent West, Kettering, NN16 8AB

**Tel: 01536 312572**

**Mob: 07967 235744**

Email: [j.white137@btinternet.com](mailto:j.white137@btinternet.com)

**Formerly J.White Decorating**

For all your decorating requirements  
From a quick freshen up to a 5 star  
finish

Inclusive of Tiling. Coving, Hidden  
trunking for wall mounted TV cables  
And repair plastering.

Friendly and trustworthy service and  
advice

Free Quotation with no Obligation



## Blue Water

### Plumbing & Heating

**Boiler...** Repairs, Servicing, Installations  
Gas Safe registered  
Qualified Engineers  
Professional Service  
Fast Response  
Fully Insured  
Free Estimates  
24hr Emergency

**-Fireplaces  
-Bathrooms  
-Tiling  
-Decorating**

**For all your Plumbing, Heating and Gas  
requirements**

**Tel : 07813 702611**

**01536 790831**

**Northampton Road, Broughton**

**[www.bluewaterplumbingservices.co.uk](http://www.bluewaterplumbingservices.co.uk)**

Dear Editor

## Snowy Inconsideration

As a resident for the last 6 years it has always amazed me that a village which sells itself on community spirit and consideration shows so little evidence of that on the roads when the snow falls. During the winter months I am astounded by the number of people who insist on parking their cars on the roads when they have driveways available for multiple cars. Our roads are not all treated and the controls on our vehicles are not as great in ice and snow as in dry conditions.

I am amazed by the number expensive cars which are not only parked on the road but parked on corners or junctions with little consideration. In icy weather they are very vulnerable to other cars going out of control. Who will be at fault if a car skids into and damages another parked illegally on a corner or junction?

I would like to point out that it is recognised under Government Driving, Transport and Travel Highway Code - section 243 that the following applies:

**DO NOT** stop or park

- near a school entrance - ***Whoops seen a LOT of this***
- anywhere you would prevent access for Emergency Services

- at or near a bus or tram stop or taxi rank - ***and this***
- opposite or within 10 metres (32 feet) of a junction, except in an authorised parking space - ***HMMMMMMNNNN***
- near the brow of a hill or hump bridge - ***Yup this too***
- opposite a traffic island or (if this would cause an obstruction) another parked vehicle
- where the kerb has been lowered to help wheelchair users and powered mobility vehicles - ***oh yes indeedy***
- In front of an entrance to a property - ***oh dear not doing well here!***
- on a bend - ***oh bless...***

I know the roads are not adopted and probably we have this collective thought that "the rules don't apply to Mawsleyites", but I will point out that these have been agreed in this country for a reason. The Highway Code was not just a wee giggle and something for the government to do to fill a Tuesday lunchtime when work was a little slack.

So, I guess its rant over, but come on Mawsley lets be considerate as we like to think we are as I don't want to read/hear that someone has got hurt by such inconsideration.

Nicola Cawley

# India 2 Mawsley



## Contemporary Indian & Bangladeshi Takeaway

OPEN 7 DAYS INCLUDING BANK HOLIDAYS  
5pm - 11pm

Free delivery\* to Mawsley & surrounding villages  
**10% DISCOUNT ON COLLECTIONS\***  
\* on orders over £12

**TEL: 01536 791108/791018**  
**www.india2mawsley.com**

**2 BARNWELL COURT, MAWSLEY,  
NORTHANTS NN14 1GA**



# Muddy Boots

PRE-SCHOOL

- We welcome children from 2 1/2 to 5 years
- Friendly, experienced, committed & caring staff
- Open Mon - Fri, 8.45 - 15.00 in term time
- Excellent indoor/outdoor facilities
- Government funding & childcare vouchers accepted
- Good Ofsted, with 'outstanding' features

Tel: 01604 781838  
Email: [office@muddybootspreschool.com](mailto:office@muddybootspreschool.com)  
Jubilee Drive, Walgrave



[www.muddybootspreschool.com](http://www.muddybootspreschool.com)

## (not the) Letters to the editor

### Pub Site

Ma'am,

I read with interest your item on the land designated for development of a Public House.

In the current economic climate, public houses are reported to be closing at the rate of around three per week. To save the effort and cost of purchasing the land, erecting a building, running it for several years and then closing it down, would it not be more sensible to call the piece of land the "Former Pub Site" and leave it derelict and overgrown (as it currently is)?

In a very short space of time the Borough Council would have a change of heart and grant a change of use and allow houses to be built there to the benefit of the community!

*Mr G. Whimpey*

*(Editor: The possibility of the planning rules being relaxed and permission being granted for housing at the next application was suggested as quite a likely outcome at the recent Parish Council meeting.)*

### Deep Water

Ma'am

How delighted I was to see the addition of a new sign at the Village Pond indicating that there is now "Deep Water" there.

I trust, however, that alternative signs have been purchased for the inevitable periods when the Pond ceases to hold any water. If anyone is interested, I could happily "knock up" a few alternatives such as "Slightly Less Deep Water"; "Shallow End" or "Dried Cracked Bottom" for such times.

*Mr Sine Ritter*

### Neighbourhood Watch

Ma'am,

Just a brief note to thank you for publishing the list of roads in Mawsley currently not covered by the Neighbourhood Watch scheme. It has certainly made my life as a sneak thief so much easier!

*Name and address passed on to the Police.*

### Window Tax

Ma'am,

May I congratulate you on the excellent article in last month's MN&V on the Window Tax introduced in the 17<sup>th</sup> Century. I do, however, question whether the "bricking up" of windows in Mawsley is an architectural "hark back" to those times.

Having been resident for many years and watched the village grow I would be more inclined to think that in the developers rush to finish buildings to get new owners in, coupled with a shortage of wooden window frames (most companies switched to UPVC years before), they just took the easy option and bricked up the holes.

If you are one of those suffering from the bricking up then make a statement – knock the bricks out and have a UPVC double glazed window unit fitted – a hark back to the eighties and nineties trends of better insulating your property and reducing your gas and electricity bills!

*Ms Anne Glia-Windos*



...Personal  
...Management  
...Assistance

### We can Project Manage **Private Projects:-**

We can come in right at the considering stage of your project, we can come in to your project to rescue any problems or difficult circumstances, or we can start your project exactly when it suits you.

We have a saying.... we don't say "we can't do that", we say "how can we do that?"

**P.M.A. we are keen to share our Positive, Mental, Attitude.**

Imagine knowing the price of everything from the start! Imagine only having one person to deal with and everything arranged to the smallest detail. Imagine just enjoying watching the project progress while you control the time and pace.

We care. We are passionate about getting things precisely how you imagine them to be, but above all we are enthusiastic about your projects.

- Extensions and developments
- Home Moves, with great professional service
- Home Projects
- From new family requirements to family requests
- Home renovations
- Garage and Loft Conversions

Rookery View, Mawsley, NN14 1TR t: 01536 799 076 m: 07553 371 598 e: info@pma-uk.co  
www.pma-uk.co





Pudding and Pamper night was a great success.

Thanks to everyone for coming and enjoying the party and to all those who contributed puddings, or their time and effort. It all helped to make it a successful fundraiser for both Mawsley school and church...our events are not to be missed!

The next FOMs event is the Easter Eggstravaganza



*Puddings Galore!*



### Mawsley News & Views

is brought to you 8 times year by the MVA. It's purpose is to keep you informed about events and decisions in the village and to provide space for your ideas and views. Don't keep them to yourself! The editor welcomes letters, articles and pictures from Mawsley residents. See back page to become part of the News & Views Team.

The next News & Views is due out on

**17th April**

**Please send your articles etc. to the editor by Friday 5th April.**

Pat Rowley

rowleypj@btinternet.com

791881



# Easter Eggstravaganza

**Saturday 23 March 2013**

FOMS Kitchen



Crafts

11am – 2pm

at

**Mawsley Primary School**

Fun & Games



Meet the Easter Bunny

Guess the Cake Weight



Guess the Bunny Name



Chocolate Tombola



Alcohol Tombola

**...and much more!**

# What's On What's On



Easter events for Children at The Centre

## Children's Easter Party

**Saturday 30<sup>th</sup> March**

**5pm until 8pm**

Entertainment provided by Simon Stockford

Buffet provided by Coffee@No 9

Tickets £3.50 per child.

## Children's Easter Egg Hunt

**Monday 1<sup>st</sup> April**

The Easter Bunny will start the egg hunt at 10am  
- meet in the bar before 10am.

Bacon sandwiches and hot drinks will be on sale  
before, during and after the egg hunt.

The Easter Bunny will present all children with a  
chocolate egg at the end of the egg hunt.

Tickets £2 per child.

Tickets for both these events are on sale now at The Centre



The last Thursday of the month  
in the bar at The Centre.

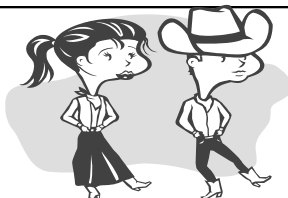
Starts 8pm

Raffle and complimentary bar snacks

Next dates are: Thursday 28<sup>th</sup> March

Thursday 25<sup>th</sup> April

Thursday 30<sup>th</sup> May



## **Family Barn Dance**

**Friday 10<sup>th</sup> May 7pm - 10.30pm**

**The Centre at Mawsley**

**Dancing to live music with a caller**

**Buffet supper**

**£4 per person (adults and children)** Tickets now available from The Centre

**MOORE STEPHENS**  
FINANCIAL SERVICES

FRIENDLY, HELPFUL ADVICE  
ON  
**PENSIONS  
SAVINGS  
INVESTMENTS  
& LIFE COVER**



Offices in **Peterborough** and **Corby**

For more information call us on **01536 462700** or visit **www.msfs.co.uk**

Moore Stephens is a trading style of Moore Stephens Financial Services (East Midlands Ltd) which is authorized and recognised by the Financial Services Authority

*Come and join us on a pre Easter trip to the fantastic 'Webbs of Wychbold' Garden Centre.*



**Wednesday 27<sup>th</sup> March.**

*Pick up at Mawsley at 9.30am – Arrive 11am.*

*Leave at 2.30pm and arrive back for 4pm.*

*All times are approximate and traffic dependent.*

*Webbs is an inspiring place to visit and meets all your gardening needs. Also, it has a very large Restaurant/Café where the food is local and excellent value.*

***There are also retail outlets and the most delightful Food shop selling a lot of local and regional foodstuff.***

*Please make cheques payable to Mawsley Village WI, full payment when booking. **The cost is just £16.** Closing date is March 13<sup>th</sup>.*

*Please supply name, address and phone number [these details are not passed on] and send to:*

*Mrs D Muggleston*

*20 Birch Spinney*

*Mawsley Village*

*Nn14 1QW*

*01536 791186*



*We are sorry but no refunds unless seat sold on by ourselves. If seat is sold on by yourself please notify us before travel date.*

# What's On

## **Moulton School Ultimate Reunion Party**

for anyone who attended Moulton Comprehensive school between years 1992 and 2000.

**At The Centre at Mawsley**

Saturday 27th April 2013. 7pm-late.

Inc. DJ & Buffet.

Tickets: £15 if purchased in advance or £20 on the door.

Tickets on sale now from: Horseshoe Pub, Sywell or 12 Warren End Mawsley.

All Proceeds to 'Andi Bull Cancer Trust'  
[www.andibull.org.uk](http://www.andibull.org.uk)

*Organiser: Danielle Booluck says 'Andi Bull was my cousin who sadly passed away in 2010 from non-Hodgkin's lymphoma aged just 25 and my family have worked tirelessly whilst he was with us and up until now to raise funds to help other young people with cancer.'*

**Kelmarsh Country Fair**  
**31<sup>st</sup> March & 1<sup>st</sup> April 2013**  
**Kelmarsh Hall, Northants**  
**[www.countrymanfairs.co.uk](http://www.countrymanfairs.co.uk)**



**For advanced tickets, please phone 0845 2305175 or book online**

The 2013 Kelmarsh Country Fair is now back at Easter, making a fantastic day out for the whole family this coming Bank Holiday!

**Attractions include:**

- The Knights of Middle England Jousting Display
- Mid Wales Axe Team
- Gardeners Question Time with the Daily Mail
- The Mounted Games Association
- The Mole Show
- The Sheep Show
- Hot Air Balloons

**Over 200 exhibition stands, Craft Fair, Antiques Fair and Food Festival and lots, lots more!!**



## MADS NEEDS YOU

Great to see you at 'Aladdin' and thanks for letting us know how much you enjoyed it.



### We are now on a recruitment drive.

What we do next really does depend on **YOU**. A lot of hard work goes into a production like 'Aladdin' and the process has to start months ahead of the performance weekend. Before we can decide on what we are going to do next, we need to find more helpers.

We are sure there are lots of you with hidden talents who maybe don't want to act but might like to help with:

Constructing scenery	painting	making costumes
Sourcing props	publicity	tickets
Selling at the shows	posters	selling programmes
Selling tickets	running a raffle	make-up
Lighting	sound	setting up the stage and taking it down
Scene shifting	seating	setting up and clearing away

Please contact me on email: [garethn@hotmail.fr](mailto:garethn@hotmail.fr) or phone 01536 790864 with your details and what you would like to help with.

Thank you in anticipation...

Gareth Norris, MADS

07703737356  
01604 530140

**Joe de Boise**  
Artificial Turfing Solutions

**An impressive looking alternative to natural grass that is maintenance free!**

**For any enquiries or to receive a free, no obligation, quote please do not hesitate to get in touch.**

**JDB Turf & Trowel**  
[joedbturf@gmail.com](mailto:joedbturf@gmail.com)

 **SANDRA**  
***Clothing Alterations & Repairs***  
***Ladies & Gents***  
***Also***  
***Silk Christening wear***  
***Special Occasions Wear***  
***Daywear and Handknits for Babies and Children***

7 Brambleside  
Kettering  
NN16 9BH **01536 521481**

Phone: 07580 552027 Email: [tgmcsky.com](mailto:tgmcsky.com)

**The Garden Maintenance Company**  
10 Main Street, Mawsley, Kettering, NN14 1GA

**The Professional Lawn Mowing & Garden Service**

Just call Simon on 07580 552027

- Lawn Mowing
- Hedge Trimming
- Fence Painting
- Garden Clearance
- Weed Control
- Bespoke Work

Adele & Sonia's   
**IRONING SERVICE**

Free collection  
**24hr** TURNAROUND  
Free delivery

**ONE OFF OR REGULAR SERVICE**  
**EXCELLENT RATES**

**Sonia**  
**07860 744743**  
[www.AdeleandSoniaIroningService.co.uk](http://www.AdeleandSoniaIroningService.co.uk)

# Aladdin came to Mawsley

Thank you to all those who helped with this year's pantomime and made it possible - we couldn't have done it without you!



*The full cast at the end of three packed performances.*

## What was it like to be in the pantomime?

MADS is like a big family. We all work together throughout the year to produce what I think is an amazing panto !

I've been in the last 2 pantos and to be honest I get really nervous before performing but the MADS family help me with the nerves and my confidence. MADS is for everyone young and old.

This year's panto was Aladdin and I played olden day Aladdin. It felt fantastic on stage and to see the audience enjoy it as much as I did was just brilliant. Cant wait for next year !

Josh Pegler

This year in the MADS pantomime I was in the chorus. We learnt lots of dances for the show and had to do a lot of practice to make sure it was perfect. I had great fun performing these dances and we had fantastic costumes and makeup too.

I was a bit nervous before the shows because I knew that there were a lot of people coming to see us but once I got on stage it was exciting. It is great fun being part of the pantomime and I can't wait for next year!

Olivia Newton



*Aladdin (Joshua Pegler) on stage with Widow Twanky (Steve Draycott) and Wishy Washy (Lucy Cope)*

## And what was it like to watch the panto?

*Excellent night. It get's better every year. We used to spend a fortune taking our children to the panto in town. This one was just as good.*

Val Sanders

*I thought it was wonderful. I could have gone and seen it again. The scenery was very good.*

Cath Lay

*The parrot wasn't 'utterly ridiculous'. She was brilliant.*

Jacqui Wilson

*My favourite was Bo Peep. She's in my class at school.*

Owen Wilson



**PROFESSIONAL  
OVEN VALETING**

**Steve Buswell**

01933 680 929 / 07711 379177  
Email: [steve@goldstarovenvaleting.co.uk](mailto:steve@goldstarovenvaleting.co.uk)

31 Mulso Road, Finedon, Northants NN9 5DP  
[www.goldstarovenvaleting.co.uk](http://www.goldstarovenvaleting.co.uk)

**Ovens • Hobs • Microwaves • Extractors**

***Hair by Chris***

**At Strands**

78 High Street, Broughton

• ***Friendly professional service for all the family*** • ***Easy parking***

• ***Evening appointments available***

**Call Chris on 01536 791065**

## MAWSLEY COMMUNITY PRIMARY SCHOOL

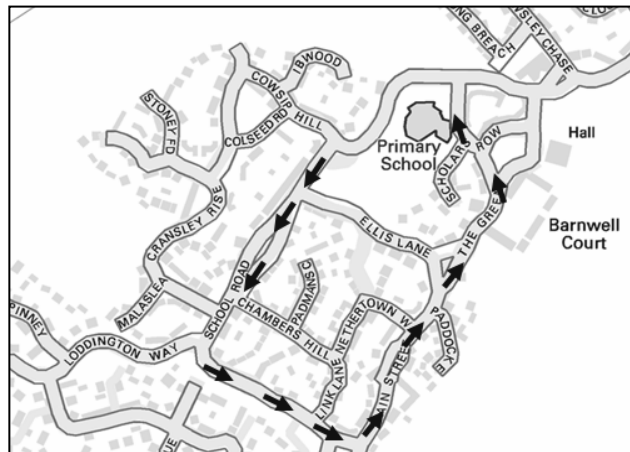
The Foundation Stage and Key Stage One children of Mawsley CP School will be brightening up Mawsley village on Thursday 21<sup>st</sup> March at 11.00 with their Easter Bonnet Parade.

The children will leave school via the gates on the playground and turn left onto School Road, left onto Loddington way, then left onto Main Street, follow onto The Green and then left onto Scholars Row back into school. See map for more details of our route.



We hope to see lots of you ready to celebrate and marvel at the children's fantastic creations.

(This event is weather and adult supervision permitting.)



### Careers Day – 7<sup>th</sup> February

We are always looking to provide our children with inspirational and memorable learning experiences here at Mawsley Primary, so our Careers Day ticked both of those boxes! As a whole school we had been studying 'Going for goals' through our Personal, Social and Health Education lessons. It was decided that we would reinforce this by making the most of all the wonderful skills and careers that our parents, helpers and friends have within the community. We had a wonderful response and the children were lucky enough to interrogate (sorry interview) 23 voluntary guests, who included; helicopter and airline pilots, a lawyer, a professional footballer, a fireman, a baker and many more!

Harrison O'Neill commented: "Meeting the footballer was great because we found out that he supports a different team to the one he plays for!"

Mirren King: "I loved meeting the RSPCA people as they brought in lots of animals and they taught us how to look after them properly."

The event proved very successful in inspiring our pupils. We hope to run it again in the future. However, it would not have been possible without our volunteers; therefore we would like to extend our thanks and appreciation to all of those adults that offered their help. We really appreciate your continued support and we know how lucky we are to have you all.

### Swimming Champions 2<sup>nd</sup> year running

On February 20<sup>th</sup> 14 children from Year 5 and 6 competed in the Kettering Schools District Swimming Gala at Montsaye School. I am pleased to say that we returned victorious for the second year running and we now go to compete in the Level 3 School Games finals at Corby Cube.

A huge well done to all the children that attended. Their behaviour was excellent and we are very proud of them. A huge thank you also goes to the parents who arranged transport to and from the event. We understand it is difficult for you to manage jobs and other commitments and we offer our sincere thanks for your continued support.

Gareth Weston - Mawsley Community Primary School

### MART (Maths and Art) Day

Wow what a day! An unconventional mixture of subjects turned out to be one of the best learning experiences our children have experienced this year!

Focusing on the work of American artist Jackson Pollock, the whole school was encouraged to combine the 2 subjects and produce a piece of artwork using the skills they learnt that day. It seems strange to combine tricky mathematical concepts such as ratio with art, but again the children embraced the day and produced some fantastic work. Perhaps we should consider auctioning some of it off!

"We had to split our paper up into quarters and create symmetrical patterns. We got to paint in maths which was great fun!"

Lilly Radcliffe Year 4







**1st Mawsley Rainbows ...**  
have had a busy few weeks since returning after the Christmas break.

The girls have been busy cooking, designing a rainforest collage, playing games which focus on saving our environment and had a trip to Pets at Home to learn how to care for small animals.

There are still a few vacancies in the company. Girls need to have turned 5 years old to join. If you are interested, please contact:  
Teresa Gable at  
[mawsleyrainbows@hotmail.co.uk](mailto:mawsleyrainbows@hotmail.co.uk)

To advertise your business in  
**Mawsley News & Views**  
please contact Pat Rowley  
[rowleypj@btinternet.com](mailto:rowleypj@btinternet.com)  
01536 791881

New to Mawsley-

### Midlands Clocks

Antique to modern clock and barometer  
restorations, repairs, servicing.

Dealers in fine antique clocks and barometers.

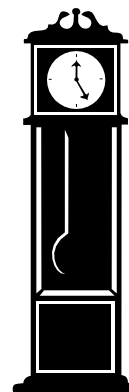
10% discount for Mawsley residents

Contact Lee Bettelley - 07949 647 152 10am-5pm

01536 799724 evenings and weekends

[info@midlandsclocks.com](mailto:info@midlandsclocks.com)

[www.midlandsclocks.com](http://www.midlandsclocks.com)




**mawsley**  
dental clinic

A feeling of confidence about your smile can affect the way in which you conduct yourself and how you are perceived, personally and professionally.

At Mawsley Dental Clinic Ltd, we offer the latest dental techniques and cutting edge technology in order to ensure our patients oral health and dental appearance is always at its very best. We offer NHS and private dentistry in a modern, relaxing atmosphere and our committed, caring team aim to give all patients a pleasant and happy experience.

We very much look forward to welcoming you.

We have excellent offers and discounts available each month why not visit our website  
[www.mawsleydentalclinic.co.uk](http://www.mawsleydentalclinic.co.uk) for more information or call us on 01536 799210

***A confident smile  
warms hearts and  
opens doors....***



**Mawsley Dental Clinic Ltd School Road Mawsley NN14 1SN**

**Tel: 01536 799210 Fax: 01536 799399**

**email: [info@mawsleydentalclinic.co.uk](mailto:info@mawsleydentalclinic.co.uk)**

## Mawsley Coffee Club

To all folks, ladies and gentlemen, who have retired or who are approaching retirement - come and join us for refreshments at our next coffee morning, which will be at The Centre at 10:30am on Wednesday, 17<sup>th</sup> April, when we have invited Fiona Debotz to tell us about the work of the Kettering Street Pastors. They are a group of volunteers who, in partnership with the Police, patrol the streets of the town in the early hours of the weekend mornings (when alcohol can still be bought) to help to keep our young people safe after a night out in the town, by engaging with them, listening to and caring for them. Prepare to be amazed!

Several of our members are going to see 'The Mousetrap' at the Derngate theatre in Northampton this month. Although it has been running in London for the past sixty years, some of us have never ever seen it – many of us have been too busy working! As the production is now on tour around the UK, we are going to grasp the opportunity to finally discover 'whodunnit'.

Another interesting outing, planned for next month, is a coach trip to Melton Mowbray to visit the various markets and sample the local delicacies of pork pies and extensive range of cheeses. Bring your shopping bags!



Members have suggested other local places to visit and we look forward to arranging these as well as more coffee mornings during the warmer, lighter days. Meanwhile, we offer our congratulations to Margaret who is celebrating a special birthday this month and also to Molly and John Shortt who will be celebrating their Golden Wedding Anniversary. Congratulations to you all!

For more details about our Coffee Club events and outings, please contact Molly Shortt (Ph 790 781) or Jean Wilson (Ph 799 490). You'll be sure of a warm welcome.



# THE GIFT BOX

A GIFT SHOP WITH A DIFFERENCE

Beautiful, contemporary  
and unique handmade gifts

8 Moorfield Farm . Warkton . Kettering . NN16 9XJ  
courtyardgiftbox@gmail.com

**We are open**  
**Wed - Fri**  
**10am-3pm**  
**Saturdays**  
**10am-4pm**

Please note: Cash purchases only

## Mawsley Maintenance Man!

- Finding lots of small little things need doing?
- Need someone professional at the end of the phone?
- Have ideas but not sure what's possible?
- Would like to deal with someone local and recommended?

**Well, I'm here to help!**

**I am a qualified plumber and professional  
builder with over 30 years experience!**

**Kitchens, bathrooms, conservatories,  
extensions a speciality.**

Also willing to do odd jobs; nothing too small for Mawsley residents. So if you need a day's labour, or a full project undertaken I can make it happen!

I am fully insured, very clean and tidy and have a desire to do a good cost effective job.

Please call **Jack Den-drijver** on:

**07553371596** or

**01536 799076**

Long Breech, Mawsley



## MAWSLEY TOUCH RUGBY



### New players welcome!

**Saturday mornings, 9.15am  
Mawsley Playing Field**

Informal sessions for fun & fitness  
All abilities welcome, simple rules

For more info:

[martin\\_watts78@yahoo.com](mailto:martin_watts78@yahoo.com)  
[mawsleyvillage.co.uk](http://mawsleyvillage.co.uk)



## Mawsley Community Choir

Yes, our village now has a Community Choir. We have met three times and have been singing together and learning together. It was absolutely great to get such a positive response from you.

New friendships have been formed and we are making plans.

**We meet every Thursday evening in term time  
from 7.30-9.00 at The Centre.**

Carole Lyttle is our Musical Director and we now have a chairman, secretary and treasurer.

The most important thing we do is SING.

Come and join us. If you want to find out more about becoming a member contact:  
Frances Allbury: [lhpcouncil@btinternet.com](mailto:lhpcouncil@btinternet.com)  
01536 790870

Pat Downing



## Line dancing

**At The Centre. Thursdays 1 - 2.30pm**

We are a friendly self-led group who enjoy dancing to lively music.

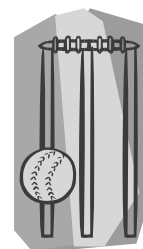
**New members are very welcome** so, if you fancy some gentle exercise and a bit of a laugh, come and give it a try.

(We'll do extra sessions for newcomers from 2.30 - 3 if required.)

*Just £2 per session for the hall hire.*

## Loddington & Mawsley Cricket Club

The cricket club is busily preparing for the new season. Winter nets have commenced already on Monday nights from 7.00pm at Bishop Stopford School Sports Hall. Several new recruits have been sourced and optimism is high for a successful campaign.



As ever the club will be running competitive sides at Under11, Under13, Under15 and Senior levels.

The club will be fielding 3 Senior Saturday XI's in the Northamptonshire League, a Sunday XI in the Rutland League and Loddington and Mawsley will be represented in the Geddington Midweek League after a 10 year sabbatical.

The recent AGM saw Nick Herbert returned as First XI Saturday skipper with Nudger Butler and Sid Reynolds taking charge of the Second and Third XI's. Chairman Richard Baker is bullish about the teams' prospects for the coming season expecting an improvement on last seasons efforts.

If you wish to join a friendly, progressive, organised club with excellent facilities, financial stability and strong management come along to the Monday night sessions or alternatively contact:

Club Youth Co-ordinator Karl Sanders 07903954360,  
Chairman Richard Baker 07725834136 or  
Secretary Iain Holliday 07759308943

You can also check out our website for more details.  
[www.lmcricket.org.uk](http://www.lmcricket.org.uk)

## IAN RAMSAY QUALITY DECORATOR

*For all your interior & exterior  
decorating*

*Friendly, professional & reliable service*

**Interior & Exterior House Painting  
Skirting and Dado  
Wallpaper Hanging  
Floor & Wall Tiling Coving  
Flat Pack Assembly**

**Please ask for any other requirements not listed**

**Very Competitive Rates Satisfaction  
Guaranteed**

*For free, no obligation, estimate please call*

**07899 814014**

Or call at: 9 Padman's Close, Mawsley  
*References provided. Fully insured.*

Because of the snow we were much depleted at our February meeting which was such a shame as we had a fantastic speaker. Judy came in dressed in a fabulous 1940s costume and brought with her some beautiful dresses showing fashion that an English country lady would be wearing through different ages.

Our next meeting is on 13<sup>th</sup> March, 10am at The Centre. The subject is: **'The Women War Pilots of Harrington'**.



All visitors, men and ladies, will be very welcome.

The airfield and Museum are a very interesting place to visit and it is widely said that the ghost of a pilot and his aircraft has been spotted opposite the cottages at Foxhall, shown in the background of this picture.

On 8th May we will be holding a **'Bring and Buy' of Handbags, Purses, Scarves and Jewellery**. So if you fancy a change of bag come along and see what you can find!

We are holding a Barn Dance on 10th May in conjunction with The Centre so look out for posters. This will be a family evening and great fun.

For any further information call 01536 791186.

### Computer and Laptop Repairs

Upgrades, installations and advice.

Laptop repairs.

Screen replacements.

Fast and friendly service within the Mawsley area.



Competitive rates.

No call out fee.

Call Rod: 01536 799500

Mobile: 07738002332

Email: solo\_500@msn.com

### J Millington Home Improvements Ltd

Kitchens, bathrooms, tiling, plastering, carpentry, worktop replacements (laminare, wood, solid surface) laminate & wood flooring

**Julian Millington**

**37 Hillside Avenue, Kettering, NN15 6EF**

**Tel: 01536 484708**

**Mobile 07976 183 922**

**Email: j.millington442@btinternet.com**

**Call for free quotation - no job too small**

## ROB PRICE

**Automotive Services**

*Price Automotive Services Ltd*

146 Northampton Road  
Broughton  
Kettering  
Northamptonshire  
NN14 1NS

Telephone/Fax: 01536 790901  
Mobile: 07850 960350

- **Petrol and Diesel MOTs**
- **Servicing and Repairs to any make, old and new**
- **Full diagnostic service**
- **Air conditioning service and refresh**
- **Clutches, brakes, welding, exhausts, shocks**
- **Free local collection and delivery or run-back service available**
- **For friendly and efficient service or advice please call**

**01536 790901**

# History on our doorstep

*Martin Watts is a keen amateur military historian and has been delighted, since moving to Mawsley, to discover how much history there is on our doorstep. Here he introduces us to the Harrington Airfield. He will also write about the famous Battle of Naseby. Have you got an interest in the history of our surroundings? It would be good to hear from you.*

## Strategic Significance.....

Villagers may today be used to seeing the regular flight of aircraft from Sywell Aerodrome or the odd commercial airliner still climbing from Birmingham International, but 70 years ago the skies would have been filled with an altogether different image – something with a far more serious undertone.

Less than 2 miles to the West of Mawsley on the road to Lamport is Harrington Airfield which is marked by a roadside monument alongside British and American flags. Opened in 1943, the airfield was built by 826<sup>th</sup>/852<sup>nd</sup> Engineering Battalions of the US Army for heavy bomber use.

## ‘Carpetbaggers’

During World War Two this airbase was occupied by over 3,000 personnel and operated by the United States Army Air Force (USAAF) 801<sup>st</sup> Bombardment Group who flew B-24 Liberator Bombers on day light raids dropping their ordnance on Nazi Germany. It was subsequently, and perhaps more famously, used for clandestine special operations supporting Allied Special Forces and French Resistance fighters in Occupied France by dropping vital supplies, fuel, intelligence agents and propaganda leaflets, becoming known as the ‘Carpetbagger’ missions. These operations peaked in the summer of 1944 as Operation Overlord (encompassing the D-Day landings) became a reality in France. This airfield thus played a vital role in the war effort with the Group receiving a Distinguished Unit Citation.



On 16 September 1944 the 801<sup>st</sup> were absorbed into the 492<sup>nd</sup> and, despite operations temporarily resuming in March 1945, the Group finally deactivated in October 1945.



## Missile Site

After a period of disuse, the covert nature of this airbase continued into the 1950s when it was selected to become one of the RAF's Thor missile sites with deployment commencing in 1958. The IRBM WS-315A Thor was a land-launched 60 feet long inter-continental ballistic missile carrying a 2 megaton thermonuclear warhead with a range of 1,500 nautical miles, able to strike inside the USSR. The site formed part of the backbone of the UK's strategic nuclear deterrent against the Soviet Union during the Cold War.

Due to the threat of Soviet strikes against such fixed installations, Thor was retired from RAF Harrington in 1963 with responsibility passing to the RAF's V-force bombers. Harrington Airfield was completely abandoned with most infrastructure demolished in 1965, however three distinct concrete missile launch pads are still visible from the road today. The site was awarded Grade II listed status in 2012 as an example of Cold War architecture.

## The Museum

The Carpetbagger Aviation Museum, formed in 1993, is housed in part of the original operations building on the airfield site and lies just off the A14 on the road to Harrington. It is dedicated to providing further information about RAF Harrington and its secretive history. Further details can be seen at <http://harringtonmuseum.org.uk>. The Tollemache Arms pub at Harrington also displays memorabilia, and the American flag hanging in Cransley Church is testament to the American involvement in the area during WWII.

So while Mawsley may appear new and perhaps detached from history its surrounding area played a pivotal role in safeguarding the security interests of the UK.

## Progress on programmed works

Taylor Wimpey is pleased to report it is continuing work to complete the roads in Mawsley, although January's snowfall restricted progress in some areas.

Phase 1 (Broughton Road) was formally adopted by Northamptonshire County Council on 26<sup>th</sup> November 2012.

The roads in Phase 2 (Main Street and The Green) have been completed, and Taylor Wimpey will maintain them, plus the footways and verges, for 12 months. After 12 months, should no defects be found, the highway can be formally adopted by the county council.

Legal documents are being drawn up in anticipation of entering in to a formal agreement with the county council for the adoption of Phase 4 (School Road), Phase 5 (Hawthorn Avenue), Phase 6 (Cransley Rise and Symonds Way) and Phase 7 (Rose Hill Way and Long Breech).

Griptrak won the tender for road surfacing of Phase 5 (Hawthorn Avenue). The contractor has commenced the work, which is anticipated to be completed by May.

# Taylor Wimpey

The first draft of drawings for the remaining Phase 7 infrastructure (Long Breech, Rose Hill Way, Hedgerow Lane, Hawthorn Avenue and Mawsley Chase) has been submitted to Northampton Borough Council

for comment. A programme has been established to tender the drawings before Easter.

Taylor Wimpey is continuing to inspect and maintain the storm sewers across the development and is in negotiations to enter into the legal agreements required by Anglian Water so that it can formally adopt the storm sewers

Meetings have been held with Kettering Borough Council to advance the formal adoption of the first phase of open spaces and the eco meadow. Further meetings are planned with the authority for early March to agree the cash sum required by the borough council for future maintenance, following which Taylor Wimpey will transfer the first phase of open space land.

To report issues or discuss any matters relating to the public works, please contact Taylor Wimpey's Regional Engineering Manager Chris Leeson on 0116 281 6400.

## plumbing & heating

**P. VINCENT**

Local and reliable Gas Safe registered  
Heating Engineer

- Boiler installations, servicing and breakdowns
- Bathroom installations and general plumbing
- Landlord certificates
- No fees for estimates
- See Mawsley Forum for customer references

*All work insured, guaranteed  
and delivered with care*

Call Paul at Mawsley Village on:  
07838 191617 or 01536 791597



City & Guilds

WRAS  
APPROVED  
PRODUCT

## The Village Retreat Mawsley

*Our clients enjoy very private, leisurely  
and undisturbed beauty treatments...*

*Waxing  
Eyebrow Shaping  
Eyelash & Brow Tinting  
Tantrick Spray Tanning  
Eve Taylor Aromatherapy Facials  
Collagen Facials by Marine Beauty  
Luxury Manicures & Pedicures by Creative  
Contour Body Wraps*

### Mother's Day Gift Vouchers

*Treat her to a gorgeous Aromatherapy  
Facial and Mini Manicure - £35.00*

*For a full list of treatments visit  
[www.villageretreat.co.uk](http://www.villageretreat.co.uk)*

*Call Nettie on 07712 182231*





## Chiropody / Podiatry Appointments

Home visits available

All treatments for your foot problems, including: Corns, Verrucae, Calluses, Ingrown nails, Nail problems, Infections, Flat feet, Fallen arches, Aches & pains etc.

Also biomechanical examinations and orthotics to achieve correct foot alignment and relieve pain in the feet and legs.



For an appointment please contact  
Richard Pullar, (Registered Podiatrist),  
MSSCh. DipPodMed. MBChA  
on 01604 880719 or 07734 348178



In February Mawsley Church joined forces with the Friends of Mawsley School to host a Pudding and Pamper Evening. This evening of indulgence was a huge success raising funds for both organisations and providing the women of the village with a fantastic excuse to enjoy a variety of delicious cakes.

February also saw Lent begin, and as it continues Mawsley Church is looking forward to two of its most popular and important services.

**On Sunday March 10 all of the village's children's groups will be on parade at the service to celebrate Mothers Day.** Everyone is invited to come along to thank God for their mums and participate in a lively, uplifting service which features special activities for the children.

**Three weeks later, on Sunday March 31, we will celebrate Easter with a special all age service.** This service marks the end of lent, Christ's resurrection and celebrates new life.

Services take place at The Centre at 10.30am every Sunday following this pattern:

1st Sunday: SPACE on Sunday  
2nd Sunday: worship with children's groups  
3rd Sunday: all-age worship and shared lunch  
4th Sunday: communion with children's groups

FOOD HALL • PRODUCE MARKET • GARDEN NURSERY • RESTAURANT



beckworth  
emporium

## Experience all that Beckworth Emporium has to offer

Soak up the ambience of our unique Emporium in our restaurants; while perusing our beautiful plants and pots or when choosing from the extensive selection of delicious fresh, local produce.

### GARDEN NURSERY

Stunning ranges of garden pots and the finest seasonal plants, many grown on-site by our experts.

### RESTAURANT

Enjoy our delicious menu in one of three beautiful dining areas, each perfect for a relaxing coffee or a three-course meal – the finest seasonal, local produce served to your table.

### PRODUCE MARKET

A broad selection of fresh seasonal produce, flowers, groceries and gifts for every occasion.

### FOOD HALL

A full range of meats and pies from our award-winning butcher, offering delicious fresh pasta, freshly baked bread and dairy products.

### SHOP. EAT. AND RELAX.

Beckworth Emporium, Glebe Road, Mears Ashby, Northampton NN6 0DL  
tel 01604 812371 email enquiries@beckworthemporium.co.uk  
[www.beckworthemporium.co.uk](http://www.beckworthemporium.co.uk)

Opening times: Monday-Saturday 8am-6pm, Sunday 11am-5pm  
(Restaurant open from: Monday-Saturday 8am-5pm, Sunday 9am-5pm).

**BROUGHTON BAPTIST CHAPEL**  
High Street, Broughton NN14 1NF  
for Broughton, Cransley & Mawsley  
<http://www.broughtonbaptistchurch.co.uk>

We have services with our musical group in which the children are encouraged to participate  
Our Singers group and three (3) Sunday School classes for ages toddler to teens

Services are followed with refreshments and a time to meet & chat  
**Come and join with us over the Easter period; times as follows:**

Sunday March 3rd, 10th, 17th & 24th at 10.45

**FRIDAY March 29<sup>th</sup> Good Friday** communion service at 10.30a.m.

Sunday March 31<sup>st</sup> **Easter Sunday Family Service** followed by **fellowship Lunch** to which all are invited and welcome

To advertise in  
**Mawsley News & Views**

contact Pat Rowley

01536 791881

[rowleypj@btinternet.com](mailto:rowleypj@btinternet.com)

## Linnell Carpentry

Covering all aspects of  
internal & external carpentry

- Kitchens •
- Sash Window Repairs •
- Flooring •
- Doors •
- Fencing •
- Decking •

1 Packer Road, Kettering, Northants NN15 7RP

Tel: 01536 628466

Mob: 07904 418081

Email: [info@linnellcarpentry.co.uk](mailto:info@linnellcarpentry.co.uk)  
[www.linnellcarpentry.co.uk](http://www.linnellcarpentry.co.uk)

## WOLD FARM

☆☆☆☆ Silver Award



*Superior  
Bed & Breakfast*

In large period farmhouse in  
Old village

En suite rooms & family suite

**Tel: 01604 781258**

## Hunsbury FLOORING

TEL: 01604 769861  
MOB: 07880 794324  
[www.hunsburyflooring.com](http://www.hunsburyflooring.com)

Quality Brands At Great Prices!

QUICK-STEP®



- A stunning range of carpets, vinyls & laminates
- Styles to suit every taste & budget
- Experienced professionals
- 12 months warranty on all flooring
- Fully inclusive quote—no hidden extras!
- No high-pressure sales or 'big store' overheads to inflate the price
- Convenient home visits - evening & weekend appointments available

Our friendly, personal service is all about helping you make the right flooring choice, all in the comfort of your own home.

For beautiful flooring at great prices contact  
Hunsbury Flooring, Northamptonshire's No.1 choice.

TEL: 01604 769861  
MOB: 07880 794324  
[www.hunsburyflooring.com](http://www.hunsburyflooring.com)  
[ross.holt@o2.co.uk](mailto:ross.holt@o2.co.uk)  
18 High Greeve, Wootton,  
Northampton, NN4 6BA

**Hunsbury  
FLOORING**

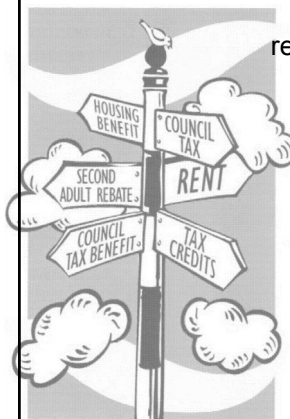
**Council Tax Benefit is changing at the end of this month.** It will be replaced by a Local Council Tax Support Scheme. A description of how the changes will affect people here is contained in Kettering Borough Council's Welfare Reform Newsletter available to download from [www.kettering.gov.uk/welfarereform](http://www.kettering.gov.uk/welfarereform) or [www.kettering.gov.uk/lcts](http://www.kettering.gov.uk/lcts)

For more information tel: 01536 410 333  
Email: [welfarereform@kettering.gov.uk](mailto:welfarereform@kettering.gov.uk)  
Or [lcts@kettering.gov.uk](mailto:lcts@kettering.gov.uk)  
Or call into the Council Office or the Drop In Surgery in Mawsley.

Housing Benefit, Council Tax Benefit and DWP Drop in Surgery in the bar/lounge of **The Centre at Mawsley** on:  
**7th March and 11th April**  
11.30 am to 12.30 pm

**Advice given on:**  
how to claim, benefit entitlement, reporting changes in circumstances, and any other council issues.

We also do referrals for:  
Attendance Allowance,  
Pension Credit  
or Disability Living Allowance



**Kettering**  
*Borough Council*

**Mobile Library** The next visits will be on  
**Sundays 10th March & 14th April from 2.15 - 3.15pm.**  
The library parks on School Road, near the top of Cowslip Hill, and comes on the 2nd Sunday of the month.

## Get involved at the library

### Get involved at the library!

The library is a vibrant community hub for everyone to use and enjoy, but it needs your help!

Did you know that lots of the community services above and beyond lending books rely on your support?

Our dedicated, selfless, and charming volunteers help to provide fun activities for families, local history clubs for research savvy bookworms, homework help for young people, business start up advice for aspiring entrepreneurs, rhymetime singing sessions for toddlers, job clubs for those on the hunt for a new career, and even help to keep the garden tidy.

If you could help your library too, then come on, get involved! Ask at your library or go to:

LibraryPlus



[www.northamptonshire.gov.uk/getinvolved](http://www.northamptonshire.gov.uk/getinvolved)



Northamptonshire  
County Council

**NHS Direct has now changed  
to NHS 111**

When you want medical help fast  
but it's not a 999 emergency call 111.



**when it's less  
urgent than 999**

**computer  
doctors**



- Laptop Screens Replaced
- Windows Not Starting
- Wireless Network Setup

- Virus and Malware Removal
- Replacement Laptop PSU
- While You Wait Repairs

Fixed Price Workshop Repairs & Onsite Service

**Tel 01536 601000**

[www.computerdoctors.co.uk](http://www.computerdoctors.co.uk)

## From the editor

This edition of News & Views, with 28 pages, is the largest so far. I can remember when it used to be four pages!

We are fortunate that so many residents regard News & Views as a worthwhile form of communication both by reading it and by sending in so many announcements, letters, articles and pictures. And as well as keeping you informed and getting your messages out it raises funds for the MVA from advertising. So hopefully it is here to stay!

It has become a very big job, however, and I would like some help. I am very amateur at all aspects of the production process and now feel that it would make sense to have either 'joint editors' or a News & Views Team. This has become more important now that Bob Littler will be standing down from the MVA because he has always been there to offer editorial support.

Would you like to be part of this? Could you be involved in **any** of the tasks listed? Some of the jobs would need steady input throughout the year, others would peak at production dates eight times a year, and some might be tasks that once you have taught us we would not need your regular involvement.

Please get in touch to discuss anything that you would like to help with. I look forward to hearing from you.

Pat Rowley

791881

rowleypj@btinternet.com

### Help is needed in the following areas

- Do you know what's going on in the village and could you follow up topical items to make sure that important decisions and events get reported?
- Have you a flair for digital photography? Could you edit all the coloured photographs that arrive into good black & white images?
- Are you a whiz with IT? Could you, for example, convert the myriad formats in which copy and adverts arrive into an easy to use format?
- Are you familiar with Desk Top Publishing and could you bring some style to our layout?
- Are you more of a business person and could you deal with all our advertisers? Provide them with information, remind them for each edition, issue invoices, chase up payment and get the adverts in on time?
- Could you deliver about 60 copies to homes near you?

### Mawsley Contact Details

#### Mawsley Villagers Association (MVA)

[mva@mawsleyvillage.co.uk](mailto:mva@mawsleyvillage.co.uk)

Chair: Bob Littler 791447

Other positions vacant

#### Mawsley Parish Council

[pc@mawsleyvillage.co.uk](mailto:pc@mawsleyvillage.co.uk)

Chair: Cllr. Peter Thomas 07809 074469

Deputy Chair: Cllr. Clare Farthing 799041

Clerk: Diana MacCarthy  
[mawsleyclerk@tiscali.co.uk](mailto:mawsleyclerk@tiscali.co.uk)

#### The Centre @ Mawsley

Tel: 799528

[www.thecentreatmawsley.co.uk](http://www.thecentreatmawsley.co.uk)  
[debbie@thecentreatmawsley.co.uk](mailto:debbie@thecentreatmawsley.co.uk)

#### Neighbourhood Watch Village

Co-ordinator Christine McIvor  
[chrismcivor@hotmail.com](mailto:chrismcivor@hotmail.com)

#### Mawsley CP School 799182

Headteacher: Mrs Elaine Wright

#### Mawsley Church

Rev'd Richard Priestley &  
Rev'd Mandy Priestley  
[rpriestley@mac.com](mailto:rpriestley@mac.com) 790140

#### Northamptonshire County Council

Cllr. Jim Harker 01604 236982  
[jharker@northamptonshire.gov.uk](mailto:jharker@northamptonshire.gov.uk)

#### MP Philip Hollobone

0207 2198373 or 07979 850126  
[hollobonep@parliament.uk](mailto:hollobonep@parliament.uk)

#### Taylor Wimpey

Chris Leeson 0116 281 6400

#### Mawsley Medical 791300

#### Kettering Borough Council

Cllr. Jim Hakewill 01858 467686

[jimhakewill@kettering.gov.uk](mailto:jimhakewill@kettering.gov.uk)

Cllr. Cliff Morton

[cliffmoreton@kettering.gov.uk](mailto:cliffmoreton@kettering.gov.uk)

Community Development  
Officer

Tim Bellamy 534355  
[timbellamy@kettering.gov.uk](mailto:timbellamy@kettering.gov.uk)

#### Mawsley News & Views Editor

Pat Rowley 791881  
[rowleypj@btinternet.com](mailto:rowleypj@btinternet.com)

**Next News & Views will be out on  
17th April**

**Copy date is Friday 5th April**

**Adverts and newsletter items to**

**Pat Rowley Tel: 791881 [rowleypj@btinternet.com](mailto:rowleypj@btinternet.com)**

**MAWSLEY NEWS & VIEWS** is produced, on a voluntary basis, for Mawsley Villagers Assoc Ltd. It is distributed to almost 900 homes in Mawsley. All profit goes into village funds. You can also read it on the village website: [mawsleyvillage.co.uk](http://mawsleyvillage.co.uk)