



Mawsley News & Views

March/April 2015

Congratulations and Good Luck to Mawsley FC Under 13s

Mawsley under 13s are through to the final of the Alan Robinson Northamptonshire County Cup.

The team was drawn away to the highly rated Gregory Celtic 2nd in the Northampton league and, on a cold windswept pitch at Kingsheath Northampton, they achieved a well-deserved 2—0 win!

Cheered on by hardy and vocal supporters, who braved the elements, the team went one goal up in the first half, with a stunning finish by Tom Reed and a goal late in the second half by Isaac James, which sealed the victory.



The final will be held on Sunday 19 April versus Corby Diamonds at Cogenhoe United FC, Brafield Road, Cogenhoe, Northampton. The boys will need plenty of support as the Diamonds have not lost a game in 2 years.

Well Done!to the whole team and coaching staff on an outstanding achievement.

Report by Tom Sanders

Village Litter Pick

**Sat 28th March
10 am—1pm**

Please come and help
Details on page 6

Parish Council Election—May 7th 2015

All Parish Councillors are required to stand-down in May which means that there will be 7 vacancies to be filled.

Formal notice of election will be (or has been) posted on noticeboards by the Parish Clerk no later than 30 March. **Nomination papers must be with the Borough Council offices no later than 4pm on Thursday 9th April 2015.**

The relevant forms (Nomination paper and Candidate's consent to nomination form) can be obtained from either Kettering Borough Council or our Parish Clerk, Diana McCarthy:

email: mawsleyclerk@tiscali.co.uk, tel: K 790573 or mob:07973254061.

There is more information and guidance via the village website
www.mawsleyvillage.co.uk/parishcouncil.

Inside News & Views

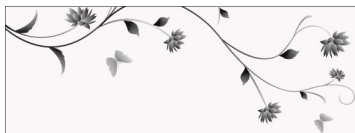
The Centre	3
MVA	4, 5
Parish Council	6, 7
School	9
Letters	10, 11
What's On	12, 13
Village groups	15—18
Local nature	21
History	19, 22, 23
Contacts	24

From the editor

Parish Council Elections—a personal call to arms!

This is a plea from me to all villagers to take this election seriously, to think about who you would like to represent you on the Parish Council and whether you, or someone else you know in the village, could fill that role.

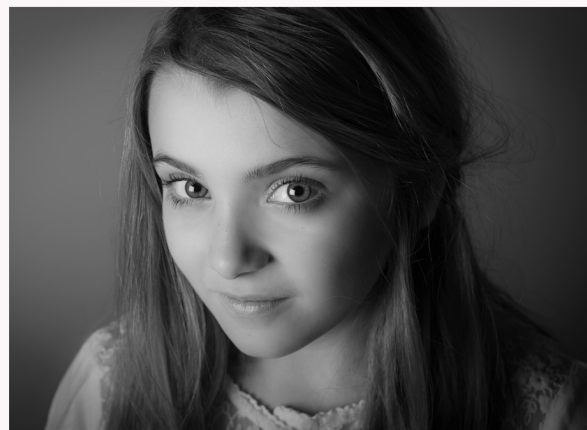
I believe it is important that we have sufficient candidates to make an election necessary and that we all take the trouble to vote. I set out my reasons on page 11.



Wedding photography

Timeless, natural, wedding photography.
Stunning images you will treasure.
Week day and weekend packages available.
Please call for details or visit our website.

Web : www.ianworth.com



Studio photography

Fine art portrait photography.
Beautiful, elegant images. Call our friendly
studio to arrange your free portrait session.
Visit our website for more details.

Web : www.ianworthphotography.co.uk

Email : ian@ianworthphotography.co.uk | Tel : 01933 678288 | Like us on Facebook : facebook.com/IanWorthPhotography | Follow us on Twitter : @ian_worth | Visit the Studio : Main st, little Harrowden ,NN95BA

Infant Aquatics **Baby & toddler swimming courses**

Small, friendly classes from six weeks to four years. Building life long safety skills using our holistic approach in a fun environment.

Kettering area call 01858 565 713
Wellingborough area call 01933 674 505

www.infantaquatics.co.uk



Muddy Boots PRE-SCHOOL

- We welcome children from 2 1/2 to 5 years
- Friendly, experienced, committed & caring staff
- Open Mon - Fri, 8.45 - 15.00 in term time
- Excellent indoor/outdoor facilities
- Government funding & childcare vouchers accepted
- Good Ofsted, with 'outstanding' features

Tel: 01604 781838

Email: muddybootsplaygroup@gmail.com

Jubilee Drive, Walgrave

www.muddybootspreschool.com





Web: www.thecentreatmawsley.co.uk

Facebook: The Centre at Mawsley

Twitter: @centre_mawsley

Phone: 01536 799528

the centre at Mawsley

update and events

January and February saw the return of the regular **Children's Film Nights** and the introduction of a small snack menu for these and the regular **Quiz Nights**. The events proved to be well supported, feedback has on the whole been positive but food sales were disappointing. We will be continuing the Film Nights during 2015 and developing the food offer to something we hope will prove to be more popular.

The first **Teens' Party** was held in February which was not as well attended as we hoped for despite the efforts and involvement of a number of the younger members of our community. We will be gathering feedback and using this to help make the next one more successful. Once again we would welcome the input and involvement of any teenagers in helping shape and organise this event so please contact either me or Dale at the Centre if you want to get involved.

Hall Use

Analysis of the use of our hall makes for some very interesting reading.

The hall is booked by either village user groups or individual villagers for 60% of the total time it is available. The other 40% of the time it is available for parties, weddings, christenings etc. There are some awkward time slots to fill in between our regular bookings during the daytime which in real terms means that we will never fill them regularly. These account for half of this 40% spare capacity. So in essence the hall is only available for private hire for about 20% of the total time available, which is mainly at the weekend.

Further analysis shows that the hall is used 73% of the time by the younger members of our community, up to the age of 18, with the remaining 27% of the time being used by adults.

For me, this analysis demonstrates just how important a part of our community The Centre is and how it provides a service across all ages within our community. The hire charges are kept at very competitive rates, subsidised by our bar takings, to ensure that this need is met now and is sustainable for the future. The feedback both I and my team receive is that the hall rates are a key consideration for both regular and "one-off" customers when booking the hall. We are looking to develop the events held at TCAM and we are taking positive steps to fill the spare capacity we have.

The Cask Ale Festival ran from 26th February until 2nd March coinciding with the Quiz night, a **Race Night** and **live music** on the Saturday. The cask ales went down very well as did the entertainment and we will look at improving on this for the next one! It was particularly pleasing to see so many new faces at The Centre during these events and I do hope that we will see you again, soon.

March and April will prove to be busy with new **Bingo afternoons and evenings**, our charity event "**Party Pants**" for Prostate Cancer, the **Children's Easter Party and Egg Hunt** and of course **The DreamBoys!**

Please take a look at our "What's On" section later in the newsletter for details of the confirmed events and check our website and TCAM Bar facebook page regularly for further updates about our Events Calendar.

Thank you for supporting TCAM over the last few months and helping to make the new events a success. Have a great Easter and we all look forward to welcoming you in The Centre very soon!

Best wishes
Hugh

For details of all events at The Centre

- ♦ see pages 14 & 15 for 'What's On'
- ♦ telephone 01536 799528 or
- ♦ look at our website
www.thecentreatmawsley.co.uk
- ♦ check the TCAM Bar facebook page

The Mawsley Welcome Pack

Long-standing Mawsley villagers may remember that they were presented with a 'Welcome Pack' on arrival. These were often delivered by Mary-Rose Dolan-Holland on behalf of the MVA and backed up with a personal welcome.

Well, although we now have a much bigger population, the Villagers Association has decided to resurrect the pack. From April, newcomers will receive a pack of useful information from our local amenities, from councillors and managers who work for the community and from established residents who have insight into village characteristics.

Of course, in the days when the pack was first introduced the village was much smaller and every house was new so it was a simple task to identify where and when newcomers arrived. Now, with over 900 homes it's not so easy. We will obviously keep an eye on the various house sales websites but if you have somebody moving in near you, please let one of us know and we will undertake delivery. Alternatively, we could get a Welcome Pack to you and you could deliver on our behalf. It might be a good opener as an introduction to your new neighbour.

Please bear in mind, though, that the pack won't be up and running until early April.

Rob Bailey, MVA Chair

THE ONLY WAY IS DEBI



I will be available to do:

- Cut and Blow dries
- Wet cuts
- Blow drying
- Wedding hair
- foiling
- Colouring
- straightening
- perming
- Gents' cuts
- children's cuts

SPRING OFFER

Cut & Blow Dry

£25



Wedding hair

Available 7 days a week.
Can do any time to suit your working hours or busy schedule.



Find us on: **facebook**

The Only Way Is Debi

To book appointments, ring;

07568 383974

etyres

.co.uk

The mobile tyre experts who come to you



New tyres to suit all pockets

Budget - midrange - premium

- All makes, brands and types of new tyres supplied and fitted.
- Wheel balancing - Puncture repairs
- Supply and fit Tyron Safety bands
- Supply and fit new vehicle batteries
- Savings up to £25 when you buy 4 or more of any make or brand of tyres.

Visit us at www.etyres.co.uk
 Or call 0800 028 9000

hate oven cleaning?

OVEN REVIVE

Oven cleaning at its best

DOMESTIC & COMMERCIAL

- OVENS
- HOBS
- EXTRACTORS
- MICROWAVES

Please call Paul

07545 254975
 01536 237079
paul@oven-revive.com

£5 off with this advert

Villagers Association

Editorial Team Wanted

As most of you now know, Pat Rowley, our long-serving editor of Mawsley's 'News and Views' will be taking well-earned retirement in the summer.

The newsletter is but one of the many features that make our village unique, but the reality is that unless we find a successor or successors for Pat we face the stark possibility of losing it altogether.

We have all been guilty at times of thinking: "It'll be ok. Someone's bound to come forward." Often no-one actually does. Therefore, our initial appeal has so far borne little fruit.

There is obviously a fair amount of exchange on village matters through social media. Some may feel that's all we need. But the MVA feels that the newsletter offers much more: detailed coverage of village events; news of villagers' individual and collective achievements; items on local history; issues from the Parish Council - the list goes on. Significantly, it also generates up to £4000 a year in advertising - money which is ploughed back into the village.

Pat has done a sterling job on her own but if editorial roles and responsibilities were shared it would be less onerous, manageable and even enjoyable. For example, copy-writing, sub-editing, liaising with contributors and advertisers, organising layout are all different functions which could be shared between a team. Moreover, there is the opportunity to review its frequency and style and to take 'News and Views' into a new era.

So, do we want to keep our newsletter? Would we miss it dropping through our letterboxes? The MVA certainly thinks so.

If you can help in any way or want more information, please let us know. (Contact details on back page.) No previous editing or related experience is necessary. Pat and others are more than happy to help with the transition.

Rob Bailey (on behalf of the MVA)

Youth Club

Youth Club meets every Wednesday evening in term time from 6.30—8.30 pm at The Centre.
Entry is £2 per child. There is a tuck shop.

Baby & Toddler Group

Well we are just into yet another fantastic term at the toddler group and as usual Thursday mornings are a hive of playing, sticking, painting play dough and so much more!

As always the bar is open for adults to enjoy a cup of tea or coffee and snack time for the children....they wouldn't let us forget that!

Our group offers time and space away from home and to make new friends for both adults and children. It's lovely for us to see the children come in so happily and dash off to see what is happening each week. We continue to welcome new faces from inside and outside the village.

This term we are looking at pets and have had lots of fun in our sensory tray with feathers....it was like a huge pillow fight and as you can see the children absolutely loved it! We have also made paper plate fish tanks and bird feeders. As always lots of messy fun.



You can stay updated on what we are up to each week by following our Facebook page (Mawsley toddlers) which is updated each week. As always we are looking at more fundraising ideas to contribute towards the maintenance of our equipment and the cost of the hall. Ideas and feedback are always welcome.

The group runs on a Thursday morning during term time, from 9.15-11.00am and remains £1.50 for the first child and 50p per additional child. We are open to parents/guardians and their children from newborn up to 4years

We look forward to seeing you soon!

Contact: Krista Alford (07742 601100)
Shelley Brown (07887 792673)
Anthea Cane (07596 022525)

Mawsley Parish Council

Wind Turbine

At the January meeting a number of members of the public came to voice their concerns about the wind turbine located just outside the village; the key point being they had no prior knowledge of the planning application to build it and thus had been unable to oppose the application. It is within Daventry District Council's area and that Council had advised Kettering Council Planning Dept., but neither they nor Daventry had advised this Parish Council.

It became apparent prior to the meeting that:

1. Daventry Council has no legal obligation to advise planning applications to parishes in neighbouring Council areas;
2. Kettering Council Planning is under no legal obligation to advise their own parishes (this leaves aside issues of common sense etc.).

However the Environmental Impact Survey noted that Mawsley would be the community most affected by the turbine but no public consultation was ever held covering Mawsley residents. This suggests that Daventry Council should not have processed the application.

We enquired with Kettering Council Legal whether this would give us any grounds for a complaint to Daventry Council. Unfortunately though, Kettering Council Legal is a shared service with Daventry so they refused to help.

We agreed therefore to seek some basic (i.e. no/minimal cost, at least initially) legal advice, viz.:

- does the absence of consultation give any grounds for a complaint?
- even if it did what practical use might that be?

We will give an update at the March meeting (Monday 16th, 7:00pm).

Village Community Litter Pick

Saturday 28th March 10am to 1pm. [Weather permitting]

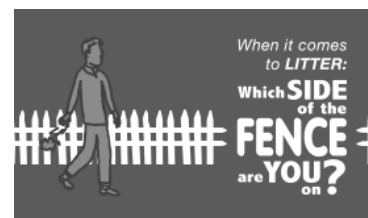


Please join us for this event at The Centre and help tidy up the village for spring.

We need about 20/30 volunteers to tackle 6 zones. We might be able to allocate you to your 'Street' and the 'Black Spot' locations that you know about.

Village Youth are welcome to help and children accompanied by an adult.

Report to The Centre
at 10am on 28th March
or call Tom Sanders on
07836 254252
for more information.



***This event is supported by Mawsley Villagers Association,
Mawsley Parish and Kettering Borough Councils***

Neighbourhood Plan

We have mentioned in previous newsletters that we have been considering preparing a Neighbourhood Plan. The process has now started.

Mawsley Parish Council has applied to Kettering Borough Council for the administrative boundary of Mawsley Village Parish to be designated as a Neighbourhood Plan area.

The first stage was to submit a boundary plan of the area to Kettering Borough Council who will publicise it on their website and who will post notices in prominent positions around Mawsley. A 4 week consultation period, which commenced on Monday 2nd March 2015, seeks any comments from interested parties concerning the proposed boundary.

Once this has been agreed then the full Neighbourhood Planning process can begin. The objective of Neighbourhood Planning is that the local community can determine how they want to see Mawsley Village develop within the local structure plan.

Writing and obtaining the necessary supportive evidence for a Neighbourhood Plan involves a very considerable amount of work and will mean that significant support from Village residents will be needed.

You can see the boundary map and the official KBC notice on our village website. www.mawsleyvillage.co.uk/parishcouncil. Then follow the link to minutes, then to Parish Council documents and they are the last two documents in that list.

Cllr Kevin White

Mawsley Parish Council

Sewage problems

Here in Mawsley, we rely on a network of pumping stations to take used water safely away from our homes and businesses. In recent months the pumps have been repeatedly blocked by household waste such as wipes and sanitary waste which should not have been flushed in the first place. Most residents are unaware that this waste stops the sewers and pumps from working as well as they should, increasing the risk of blockages which could result in the system backing up and used water flooding out of the drains into the local environment, or homes and gardens.

Mawsley Parish Council is working with Anglian Water to raise awareness about the problem and provide advice on simple actions we can all take to help prevent these avoidable blockages and subsequent sewer flooding. Representatives from Anglian Water attended the Parish Council meeting in February and as well as describing what causes the blockages they gave the following advice for all residents.



The advice from Anglian Water is simple:

- Please dispose of sanitary waste and all used wipes, including baby wipes, facial wipes and household wipes in the bin, not down the toilet. Even the products marked 'flushable' do not break down in the sewer network in the same way as toilet paper.
- Used cooking oil should be left to cool, emptied into a 500ml plastic bottle and put in the black general waste bin or taken to Kettering Waste Recycling Centre (Telford Way Industrial estate, NN16 8TD)

With your help, we can help protect our homes and the local environment from the misery and disruption of flooding and pollution incidents.

Thank you .

Parish Council Meetings

Meetings are held at 7pm on the third Monday of the month at The Centre.

Mawsley residents are welcome to attend and may speak for up to five minutes at the beginning of the meeting on any subject that they wish to have added to a future agenda.

Minutes of past meetings are at:

www.mawsleyvillage.co.uk/parishcouncil

and the agenda for each meeting can also be seen there, and on village notice boards, three days before each meeting.

The dates of the next meetings are:
16th March, 20th April, 18th May

Replacement Windows

Readers will be aware from earlier articles of the difficulties some residents have come up against when they apply to replace their failing timber windows with PVCu.

Parish Cllr Kevin White has now written a generic specification for the replacement of timber windows with PVCu in the Article 4 restriction areas and also for those dwellings that have permitted development rights restrictions.

This detailed specification was submitted to Kettering Borough Council late last year by our County and Borough Councillor James Hakewill but unfortunately it was rejected by the Head of Planning for the following reasons:-

- Changes to future Building Regulations mean that the specification would be time limited.
- Advances in technology and innovation in the glazing industry would render any standard specification obsolete.

Since the "ban on PVCu windows" was imposed at the outset of the Mawsley village development more than 15 years ago PVCu window designs have changed significantly and in many cases now closely resemble the original window designs.

There are many different PVCu window profile designs and it is important to select a window profile design that has "timber design" characteristics. We are fortunate that we live in Northamptonshire where some of the largest manufacturers in the UK are based. However they often can be more expensive than a "cheap" standard PVCu window.

The next step is that James Hakewill, in combination with a house owner in the Article 4 area, will be submitting a proposed PVCu window/s sample design to Kettering Borough Council for approval. The objective being that a list of approved PVCu window designs could be published together with the contact details of the local suppliers.

India 2 Mawsley



Contemporary Indian & Bangladeshi Restaurant & Takeaway

OPEN 7 DAYS INCLUDING BANK HOLIDAYS
5pm - 11pm

Deliveries are back for orders over £15.
Free in Mawsley
£1 to surrounding villages

TEL: 01536 791108/791018
www.india2mawsley.com
2 BARNWELL COURT, MAWSLEY

Housing Benefit, Council Tax Support Drop in Surgery on:



17th March
28th April
2nd June

11.00 am to 12.00 noon

In the Bar Lounge, The Centre
Mawsley

Advice given on Welfare Reform and how it may affect
your household, how to claim, benefit entitlement,
reporting changes in circumstances and any other
council issues

Kettering
Borough Council

Our Safer Community Team Constable is:

PC 125 Gareth Broxton



Phone 101 ext. 343406

(If calling from outside Northants call 03000 111 222)

Mobile: 07557 778222

Email: gareth.broxton@northants.pnn.police.uk

In an emergency ring 999



Ambergate Treatments

www.ambergatetreatments.co.uk
We offer treatments in

Podiatry

(Chiropody)

For all treat-
ments on the
foot
And for lower
limb problems.

Acupuncture

One of the
oldest forms
of treatment
and is used to
treat most
medical con-

Kore Therapy

Treats skeletal
and muscular
alignment. It is
used to treat a
wide range of
conditions.

Please contact us for an appointment or more
information, or see our website

Telephone 01604 880719

email: enquiries@ambergatetreatments.co.uk

Ambergate, Grange Lane, Pitsford, NN6 9AL



OVENCLEAN®

The original oven cleaning specialists

*Ovenclean will transform your oven and
put the sparkle back into your kitchen!*

- ✓ Friendly, professional and reliable
- ✓ Completely safe, eco-friendly cleaning system
- ✓ No fumes, no mess, no bother
- ✓ Removes grease, fat and burnt on carbon
deposits from:

- | | | |
|--------------|--------------|----------|
| ● Ovens | ● Filters | ● Hobs |
| ● Grills | ● BBQ's | ● Ranges |
| ● Extractors | ● Microwaves | ● AGA's |

call Richard Joy today to book your oven clean

0800 840 7127/07791748458

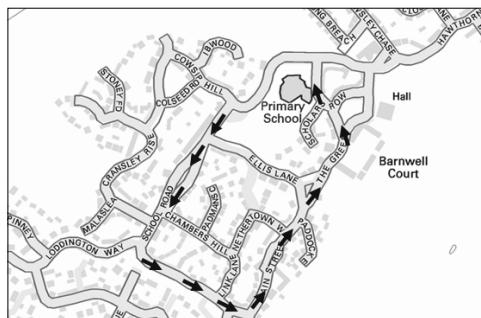
www.ovenclean.com

Mawsley Community Primary School



Annual Easter Bonnet Parade 2015

Foundation Stage and Key Stage One are excited to be celebrating Easter with their annual bonnet parade around Mawsley on **Thursday 26th March**. The children will be required to get their creative minds working and make an Easter bonnet at home with their families. This is a time for the children to share their bonnets and have fun with you as a community. The children and accompanying adults will leave school via the gates on the playground. We will turn left onto School Road, left onto Loddington Way, then left onto Main Street, follow onto The Green and then left onto Scholars Row back to school. See map for more details of our route.



We welcome members of Mawsley village to wave at the procession as it passes by your home.

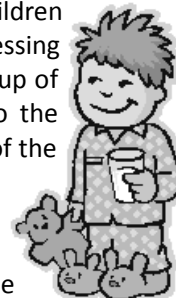
Weather permitting the walk will start from school at roughly **11.00am** and will last for approximately 30-45 minutes.

We are very excited to be sharing the children's beautiful bonnets with the school and wider community.

Foundation Stage and Key Stage One Teams

World Book Day – 5th March 2015

This year, to continue to interest our children in reading, we have celebrated World Book Day by thinking about **"A book at Bedtime"**. Adults in school took the opportunity to read their favourite bedtime story and children could select which story they wanted to hear read aloud. To add to the bedtime theme children were asked to put on their dressing gown and slippers and enjoy a cup of hot chocolate while listening to the story of their choice at the end of the day.



In addition we were very pleased that funds raised by The Friends of Mawsley School have been able to be used to buy new reading books for each classroom library. These were presented to classes at a World Book Day assembly. We hope the new books will inspire our children to become avid readers!

Lunchtime Supervisor.

Mawsley Primary School is looking to recruit 2 lunchtime supervisors to join their established team of midday supervisors, to work Monday to Friday 12.00noon to 1.30pm – 7 ½ hours a week, term time only.

- You will help to supervise the children eating their dinner, encouraging healthy eating with good table manners, helping any that have difficulties and supporting a positive environment.
- You will supervise the children on the playground, leading activities, organising and encouraging them to join in with playground games, ensuring wellbeing, safety and good behaviour, dealing with minor injuries such as cuts and bruises.

The salary for this post will be £2343 to £2422 per annum.

Cleaner in Charge.

Mawsley Primary School is looking to recruit a Cleaner-in-Charge to work Monday to Friday 3.30pm to 6.15pm – 13 ¾ hours a week – term time only.

- You will need to be reliable, caring, friendly but firm and have a cheerful disposition to join our established premises team.
- You will supervise and line manage the cleaning staff who are responsible for carrying out essential cleaning tasks to designated areas of the school.
- You will need good communication skills, the ability to build good working relations and to motivate and manage the performance of the cleaners.
- You will be responsible for the locking up and security of the school at the end of the day.

The salary for this post will be £4296 to £4440 per annum.

For further information about these jobs, or to get an application pack, please go to the school website: www.mawsleyschool.co.uk where all the information can be found, or ring the school on: 01536 799182.

Dog Fouling—nasty subject but this has to be aired

From the editor

Anyone who has tried to get a dog fouling complaint into this newsletter in the past will know how resistant I have been to this—not because I don't have complete sympathy with the complaint but because I do not believe that the owners who are inconsiderate enough to cause us this problem are going to be converted by being reminded of what they must already know.

However, I have received two angry letters on the subject this time—from quite separate sources and include them here in full.

From Bob Littler, Chair, Mawsley Parish Council

I'm not sure how to start this piece.

Perhaps *"I've been dealing with complaints about dog muck in the village for 13 years"*.

Or *"I've been avoiding walking in dog muck in the village for 13 years"*.

Maybe *"writing about it in the newsletter for 13 years"*.

Possibly *"been disgusted with it for 13 years"*.

Take your pick really. Actually all are true. And it's getting worse, not better; so clearly I and colleagues have been wasting time trying to stop people leaving it around. I say "people"; perhaps I should say "dirty, disgusting, couldn't care less people". I wonder if their homes are as dirty and sickening.

And before I go on please don't blame the lack of dog muck bins (although another one will soon be placed at the entrance to the open space opposite the school). Firstly, bagged dog muck can be put in an ordinary waste bin; secondly it can be put in your black bin. So bag it and carry it. It is noticeable that the problem is worse in Winter, when the dark mornings and nights mean that dog owners take advantage of the dark to avoid being seen leaving the muck. Otherwise known as deliberate.

However nil desperandum; so the Parish Council discussed this issue yet again, this time with the dog warden at the meeting. We agreed it is unlikely to improve until such time as the warden has caught an offender; issued a fixed penalty fine; and the offending owner's details are published here in News & Views.

You can help by reporting any instances you see to the dog warden (01536 410333). Meanwhile patrols are being stepped up.

It's regrettable that name & shame seems to be the only answer; however if that is what it is going to take so be it.

Bob Littler

So what has changed? Why am I now prepared to devote a whole page to the subject? Two reasons:

- 1. The Kettering Borough Dog wardens are now treating Mawsley as a priority and they attended the last Parish Council meeting to discuss their approach and***
- 2. That approach is to recognise that appeals alone don't work but to encourage everyone else to join forces to identify the offending dog owners and report them so that the wardens can fine and prosecute the offenders. The gloves are off!***

From Tracy Chapman, resident

Dear Editor

I write to express disgust at the growing number of abhorrent individuals who are failing to clean up after their dogs. I cannot understand why the number of incidents of dog fouling has suddenly taken an upturn (surely other villagers have noticed it too?) but it seems that I cannot go for a run, or walk my own dog without having to run the dog poo gauntlet! Is it out of the question to take some pride in the area in which you live? I accept that there are not enough dog waste bins in the village, however we all have household wheelie bins so there can be no excuse!

I have lodged a complaint with the council in this regard, and they have assured me that (embarrassingly) Mawsley has been identified as a problem area for dog fouling, and that they intend to take further action. I am pleased to see that they are taking this problem seriously.

These people who do not take responsibility for themselves or their pets know who they are, and I would like to tell them that they are a disgrace. If you are such an animal that you would leave dog poo for others to stand in, then I invite you to leave our village and find a hovel more appropriate to your own lifestyle and values.

Regards
Tracy Chapman

You can read a full account of the report the dog warden made to the Parish Council in the minutes of 17th February 2015. This includes examples of local incidents that have resulted in owners being reported and fined and more information about future plans.

www.mawsleyvillage.co.uk/parish-council-minutes

Letters

Our Golden Wedding

We had a wonderful golden wedding weekend and we would just like to say a big Thank You to all concerned. Thanks to our kids who organised a great holiday and a great party, to friends who set up all the tables for us at The Centre, our Bob for providing the dance music and to all our friends who wished us well – oh, and not forgetting the singer sent in by TCAM to entertain us later on. We also want to thank Brian, Nicki & Co. at Cransley Church for a lovely service, Mawsley Choir for singing As One and Lizzie for singing Ave Maria. The church, the flowers and the music were beautiful.

We had a most amazing time and be assured the memories will remain with us for a long time to come.

Vic and Doreen Cope

Why I think Parish Council elections are important

My role as newsletter editor has allowed/required me to follow closely the workings of various village associations and committees. I have watched both the MVA and the Parish Council struggle at times to fill vacancies and there has rarely been a contested election for either.

This is a great pity because it means that few councillors or MVA directors have been voted in by the village as a whole. This is not for want of trying on the part of those groups. The Parish Council, in particular, announces every vacancy and the chance of a formal election but usually ends up, through lack of candidates, without an election and then has to co-opt volunteers to fill vacancies. Occasionally this will be unavoidable but I don't think it is healthy for it to become the norm.

There is an opportunity now to put this right. All our Parish Councillors are standing down in May and not all of them are seeking re-election. There are 7 Parish Councillor vacancies to be filled. **If there are more than 7 candidates there will be an election on 7th May**, conducted by KBC, at the same time as the national election and we will all have the chance to vote.

Don't get me wrong—I don't have any doubt at all about the integrity of our Parish Councillors in this respect; I know that they are fair, open and even-handed when co-opting new members, but I don't think it's fair on them or the rest of us. I know that they would prefer there to be elections for vacancies rather than having to select new councillors themselves.

In my view co-option isn't a good system because it means that:

- Councillors don't have the confidence of knowing that they were voted in by the whole village
- It lays them open to the possible criticism of providing 'jobs for the boys' and
- Residents are absolved from having to give any thought to who they want to represent **them** on their Parish Council.

There will be an election this time provided there are more than 7 candidates. I'm not suggesting that we need any Monster Raving Loony candidates to stand but I do want everyone who has ever considered joining our Parish Council to think about it seriously again this time.

I want the chance to cast my vote and I want to be able to choose between the young and old, men and women, longstanding and new residents. I want the Parish Council to represent the whole village.


Pat Rowley, Editor

mawsleyopticians



1 IN  EVERY 20
DRIVERS CAN'T
SEE CLEARLY
BEHIND THE WHEEL

ALL THEY NEED IS
AN EYE TEST

Mawsley Village Surgery, School Road, Kettering, NN14 1SN
Tel: 01536 601400 Email: mawleyopticians@live.co.uk
Find Mawsley Opticians on Facebook 

What's On

Gardening for All

Forthcoming Meetings and Events 2015

Monday 13th April

Bosworths Nursery Tour

details to be advised.

Ticket £2 includes nursery tour, warm drink and cake.

Sunday 10th May

between 2:00 and 4:00 at TCAM

BIG SEED GIVEAWAY

See article on page 16 or visit our notice board for more information.

Monday 11th May

7:30 at TCAM

'Home Grown' meeting.

Ongoing design feature, tips and plant of the month, new

Worlds Best Gardens feature

Open discussion and much more.

All Welcome

£2 per person at the door (includes raffle ticket for meetings held at TCAM)

Informal Friendly Informative

Mawsley Open Gardens & Made Locally Market

The Centre at Mawsley, 9 The Green, NN14 1GY

Sunday 21st June Noon — 5pm

CREAM TEAS BAR CHILDREN'S TRAIL

MARKET STALLS GARDENS

✕ Contact Cheryl for stall holder
information info@doorstepbaking.co.uk



plumbing & heating

P. VINCENT

**Reliable Gas Safe Heating Engineer
based in Mawsley**

- Boiler installations, servicing and breakdowns
- Bathroom installations and general plumbing
- Landlord certificates
- No fees for estimates or village call outs
- References available on Mawsley Facebook

*All work insured, guaranteed and
delivered with care*

**Call Paul on:
07838 191617 or 01536 791597**



Mobile Cycle Repairs



Wheelie good for your bike!

www.mintcycles.co.uk

**A Quality Service by Trained & Insured
Mechanic - Using Only Quality Parts**

On-line Sales & Spares
On-line Cycling Kit

Bike Servicing & Repairs
Mobile Service Available
We offer Collect & Return
Wheel Building
Wheel Repairs & Truing
Custom Bike Builds
Instruction on Bike Care

**Why Not Try Our
Collect & Return
Service**



Email: sales@mintcycles.co.uk
Office & Workshop - 01933 779628
Mobile Workshop - 07791 610727

Mint Cycles, PO Box 7667, Rushden, NN10 1BB



TEA, COFFEE AND BACON SANDWICHES
AVAILABLE FROM TCAM KITCHEN

MONDAY 6th APRIL
9.15 AM – 11.15 AM
TICKETS: £2.50
INCLUDES AN EASTER
EGG
AVAILABLE FROM
TCAM OFFICE AND BAR



PARTY PANTS

The biggest holiday style entertainment party is coming to Mawsley on Friday 13th March 2015 – 8PM Start
All Tickets £5 in advance - £7 on the door – Raising Money for PROSTATE CANCER UK

QUIZ NIGHT

Every Last Thursday
8PM Start

PRIZE BINGO

Eye's down for a game of...
PRIZE BINGO!

Friday 20th March

8PM – All Books £2
(6 Games per Book)

Tuesday 24th March

8PM – All Books £1.50
(6 Games per Book)

THE WORLD FAMOUS
DREAMMEN[®]
The Ultimate Girls Night Out

Saturday 25th April
The Centre at Mawsley

7pm – Late

(Doors Open 6.30pm)

All Tickets: £15

(Over 18's Only)

Tickets Include:

Glass of Prosecco on Arrival

Free Complimentary Goody Bag

Ann Summers Show

Drag Queen

The DreamMen Show

**Tickets Available from The Centre
Office OR by calling: 01536 799528**

CHILDREN'S EASTER PARTY

FRIDAY 3rd APRIL

5.00 PM – 8.00 PM



DISCO & GAMES

BUFFET

TICKETS ARE £5.00 – AVAILABLE FROM TCAM OFFICE AND BAR

Mawsley Maintenance Man



Jack Den-drijver

jack@mawsley-maintenance-man.co.uk

"For a small repair or regular care!"

call Jack on

07553 371596 or 01536 799076

13 Long Breech, Mawsley,
Northants

Advanced Loft Ladders

- Local and reliable with 20 years experience
- Create safe and easy access to your loft
- Providing valuable storage space
- Loft Ladders and folding stairways supplied and installed
- Enlargement of existing loft hatches
- Loft flooring supplied and fitted
- Velux windows supplied and fitted
- Full public liability insurance
- **All ladders guaranteed**



Call now for your free survey and accurate quotation on

01604 677999 or 07840 933410

www.advancedloftladders.co.uk



Printers of
Mawsley
News & Views

01536 533275



PMA

Project Management - Design and Build

P.M.A Project Management...
design & build with you in mind.

Building solid foundations...
Means we deliver outstanding
results!

And.... based right here in Mawsley!

Contact Info -
Yvette Den-drijver
www.pma-uk.co
info@pma-uk.co
Tel : 01536 799076



Firstly, congratulations to choir founding member Vic Cope and his lovely wife Doreen on their 50th Wedding Anniversary. The choir was honoured to be invited to sing and join in the celebrations as Doreen and Vic renewed their vows at Cransley Church on Saturday 28th February. Lizzy (choir member Mary-Rose's daughter) performed a solo of 'Ave Maria' which she sang beautifully! The choir was joined by our Musical Director, Carole

Lyttle's brother, Paul, to swell the ranks of our bass section as some members were unfortunately unavailable on the day. The celebrations continued in the hall at TCAM with a good old fashioned knees-up!

Earlier in the year on Saturday 31st January we celebrated the choir's 2nd birthday with a very enjoyable bring and share evening, which was a great success with all of us having a lovely time!

Besides all the celebrations we have been busy rehearsing for our March competitions. These were held in Milton Keynes and Kettering on the weekend of 13th and 14th March with more choirs participating than last year. We feel certain that we will have tried our best to achieve the same great results as last year and done our community proud! Results not known at the time of writing—look out for them in the next News and Views or see our notice board at TCAM.

We are now looking forward to the Stratford-upon-Avon Community Choirs Festival Workshop, where we can relax and enjoy a day of singing with around 500 other enthusiastic choristers.

Another piece of good news; we have been lucky enough to receive a donation of £300 from Kettering Borough Council via Cllr Cliff Moreton for which we are very grateful. The money will go towards funding some additional uniform for the choir.

Sing – Make friends – Spread happiness
Mawsley Community Choir



We are keen to attract new members; you need no experience just a passion to sing!

Rehearsals are held on Thursday evenings in term time at TCAM 7:30-9:30pm
(and 7-9pm on Quiz Night which is the last Thursday of the month).

If you would like more information please contact **Sue on 07793386232**

Don't forget to keep

Saturday evening 20th June free for
Mawsley Community Choir 'Summer Concert'
To be held at TCAM—time to be advised

Eve Richards

Mawsley Coffee Club



We began 2015 with a splendid lunch at the Red Lion in Broughton to celebrate the Coffee Club's tenth anniversary. This was followed by a celebration of Chinese New Year with a bus ride into Kettering for a Chinese buffet lunch, a mystery tour to St Albans, and we are planning to visit the Golf Lodge in Pytchley for breakfast. We enjoy eating out!

We arrange social mornings at The Centre for coffee and chat, and recently have looked at interesting items, including Grandma and Grandpa's treasure. Future events include 'What's My Line?' as we light-heartedly try to guess former occupations and raise funds for a local charity by holding a bring and buy sale and, as the days lengthen, we are looking forward to an interesting 'Springwatch' ramble around the village.

Outings are planned for the summer and include a Downton Experience, a visit to Drayton House, Lowick and a coach trip to the seaside.

Details of our programme and dates of future meetings can be obtained from:

Molly and John on Tel: 790 781 or

Jean and David on Tel: 799 490.

Do get in touch for more information and further details.

Our aim is to be able to include dates on our calendars for social events and outings for us to look forward to. We are a very friendly group and we share lots of laughs. A warm welcome is assured.



At Mawsley Church, we've been thinking about Lent and starting to look forward to celebrating Easter.

Our special Easter Day Celebration Service with Communion will be on Sunday 5th April at The Centre.

Our services take place every Sunday morning at The Centre. They last about an hour in a relaxed, informal setting and always include activities for children.

Regular Services at The Centre

- 1st Sunday 10.30am SPACE Tea, coffee and bacon rolls with children's activities all in the main hall
- 2nd Sunday 10.30am Celebration Service with children's groups
- 3rd Sunday 10.30am All age service
- 4th Sunday 10.30am Communion service with children's groups

If you would like to find out more about Mawsley Church please contact either:
Canon Brian Withington 01536 791373 or email revdbrian@uwclub.net or
Rev Nicki Hobbs 01536 799522 or email revnicki@familyhobbs.org.uk

Gardening For All

It may not seem like it but the weather will warm up and so will the soil. Those plants will be growing again. March is the time for a thorough spring clean; weed and dig over your borders incorporating as much organic matter as you can - those chilly winds will really help to dry out the soil. Mulch bare soil once you have done the work and remove moss and weeds from paths, terraces and driveways. They may be boring tasks but if you don't get on top of the garden now it will be a nightmare for the rest of the season.

The Gardening for All year started with an interesting meeting at TCAM in January. Les and Tricia Cottington told us about their early venture into market gardening growing tomatoes out on the Lincolnshire fens. We introduced new regular features including our new design project and announced a future programme of events for the year including a nursery trip to Bosworths in April, a vineyard trip in late summer, supporting Mawsley Open Gardens in June and many other community projects.

At our February meeting James Ramsden (with the help of Denise) took us on a tour of some beautiful gardens they had visited both in Europe and the UK and of course their own lovely garden in Mawsley. The 9th March meeting will see us continue with our Home Grown ideas and a short story about Paul's Hedge problems.

Last year to celebrate the launch of *Gardening For All* we gave away packets of poppy seeds to almost 200 households. To celebrate a successful year of meetings with speakers, sharing knowledge and gardening experiences we plan another **BIG SEED GIVEAWAY**. Join us on Sunday May 10th between 2pm and 4pm at the Centre and collect your sunflower and pumpkin seeds ---- then enjoy watching them grow and GROW. Prizes will be given for the tallest sunflower and the heaviest pumpkin – more details from Judy on the day.

For May we plan to introduce a regular feature on some of the best gardens in the World starting with a wonderful garden no too remote from the UK.

COME AND JOIN US

Our meetings are held 2nd Monday of the month in the committee room at TCAM and are open to all. Please feel free to bring along a friend or two as always.

£2 per person at the door (includes raffle ticket)
All Welcome

Informal Friendly Informative

Contact : Paul Richards on 01536 791898 or eandp68@gmail.com




MI - DECO

MAKING YOUR HOUSE YOUR HOME

PAINTING & DECORATING
GARDEN MAINTENANCE
DECKING & FENCE PAINTING
PATIO CLEANING
FLAT PACK INSTALLATIONS




CONTACT MICHAEL ON

07590617101

ENQUIRIES@MI-DECO.CO.UK

10 THE JITTY, MAWSLEY, NN14 1ST

Mawsley Touch Rugby looks to the future.

Last month Mawsley Touch Rugby Club hosted two events with the aim of elevating the club's status.

On Saturday 22nd February, Mawsley Touch Rugby Club welcomed Ben Powell from England Touch, who ran an hour long skills training session for the club. It was a fascinating insight into Touch Rugby at the very top of the sport. The session, which covered techniques and set moves used by the high level teams, was very well received. Club member, Allister Villon remarked after the session, "I've been playing Touch for 15 years and I felt like an amateur today!"

The following week, Mawsley hosted the first Northants Touch Association (NTA) training session run by COYS captain and East Midlands Tigers player, Tim Webb. This two-hour training session was open to all local clubs and attracted players from Northampton and Peterborough as well as Mawsley. The NTA is entering a team, called The Northants Helix, into the national Development Touch Series league and several Mawsley players are hoping to be selected for their first tournament on 11th of April in Bournemouth.

Any Mawsley residents interested in trying out Touch, a fast-paced, minimal contact version of rugby are welcome to come along Saturday mornings at 9:30, or from April, Tuesday evenings.

Further details can be found at www.mawsleytouchrugby.com or by searching for Mawsley Touch Rugby on Facebook.



mawsley
dental clinic

Mawsley
Touch Rugby

ENGLAND TOUCH
COMMUNITY

**Mawsley Touch Rugby Club is always looking for new players
18+ Male or female, pro or complete beginner - all are welcome**

Interested? Come to the field Saturday 9:30am
or visit www.mawsleytouchrugby.com

To advertise your
business in

Mawsley

News & Views

please contact

Debbie at The Centre

01536 799528

debbie@thecentreatmawsley.co.uk

FREE CALL OUT

**NORTHAMPTONSHIRE DOMESTIC
APPLIANCE SERVICES
REPAIRS, SUPPLY, SERVICE &
INSTALLATION OF**

- GAS & ELECTRIC COOKERS
- WASHING MACHINES
- TUMBLE DRYERS
- DISHWASHERS
- FRIDGES



SPECIALISTS IN:
AEG, ZANUSSI, ELECTROLUX,
BOSCH, NEFF, CANNON,
HOTPOINT, AND ALL LEADING BRANDS

FRIENDLY, HONEST SERVICE

**PHONE 01536 359596 or
07963 331302**

Mawsley Ladies' Rounders Team Needs YOU!

We are looking for ladies wanting to join us this season, so if you want to have a bit of fun with like-minded ladies then this is your opportunity.

Training begins on Sunday 12th April at 3pm on the playing fields, with games commencing early May on Thursday evenings.

In addition we are looking to find an umpire— someone with a bit of knowledge of the game (a bit of training will be provided) and who is willing to come to both home and away games on Thursday evenings. You will be paid for your time.

If you are interest in joining the team or becoming our umpire please contact our captain Karen Garton on 07732392621 or Kirstie Marston on 07716997179.



Mawsley Short Mat Bowls Club



We started 2015 as we finished 2014 by winning our first two matches of the year against Kettering's Ise Lodge team and Wellingborough's Kingsway club. We look forward to our forthcoming fixtures through March into April and hope that we can keep up the excellent performances.

We welcome back Val to our weekly roll up meetings and look forward to seeing other new or past members joining our ranks.

We will be holding our AGM at 6pm on Friday 24th April 2015 at TCAM. This will be a social event with a shared supper. The meeting will start with a Roll Up of 10 ends and then supper, after which our treasurer will give the financial statement for the year. Voting will then take place for the new committee.

We all look forward to welcoming new members. You will need no special equipment—just flat soled shoes and a sense of humour.

We meet every Monday (except Bank Holidays) at 1pm in the hall at TCAM to start playing 1:15. We finish at 3:15 giving you plenty of time for the school run if needs be. By the way the first three Mondays are free then £2.50 per person per week.

For more details pop in next Monday or contact Alan Prichard Club Secretary on 01536 790820



SANDRA

*Clothing Alterations &
Repairs*

Ladies & Gents

Also

Silk Christening wear

Special Occasions Wear

Daywear and Handknits for

Babies and Children

7 Brambleside
Kettering
NN16 9BH

01536 521481

**Kettering
Domestic
Cleaning**

07717 494144

Don't do your dirty work. We can do your
Domestic Cleaning professionally!

Cleaning your house after a long day at work is probably the last thing you need. You deserve to come home & find that everything is clean, tidy and welcoming. Kettering Domestic Cleaning is a reliable team of efficient, honest & hardworking Cleaners with years of professional experience in housecleaning for domestic residences. We can do a one-off clean or a weekly or fortnightly schedule to suit you.

Call us now on 07717 494144 to discuss your domestic cleaning needs - we will be happy to make a home visit to provide a tailored quotation.

History (very recent) on our doorstep (actually very close to home)

In the last News & Views the Parish Council talked about its relationship with The Centre. Following on from that I thought it would be useful to explain how and why The Centre building and organisation developed in the way they did. Hopefully this will complement that previous article to explain why things are organised in the way that they are. I am going to start with the building.

Note: this is my personal view/recollection; not necessarily that of the Parish Council, MVA or TCAM.

Way, way back in the mists of time, otherwise known as late 2001, when there were only about 35 houses in the village, Kettering Council Planning Department approached us to say that work needed to start on specifying the "Community Building". This building had to be provided by the developers as a planning requirement (in what is called a Section 106 Agreement). The planners believed that we, as future users, should be involved in that specification.

We had already formed the Mawsley Villagers Association, as a means to get facilities for the village and to generate social activity, so we set up a sub-group (ah, bureaucracy already) for this project. Visits were made to a number of village halls and community centres, the learning from which lead to us drawing up an outline design for our new building. This was essentially a central core of a large hall, with rooms set around the outside of that. Those rooms could be accessed from outside, as well as via the hall; this would mean they could be used in isolation if required (i.e. no need to open up the whole building). This would have been simple and cheap to operate, as staff would not be needed to be on site at all times. Reaction from Taylor Wimpey (TW) and Kettering Council was very positive.



Spring 2005.

Looking across the area that is now Barnwell Court & Meadow Close



May 2005. No one told the builders it wasn't a Village Hall!

However two things changed all that:

1. Although the architects engaged by TW were aware of our design proposals they came back with a radically different design (not unlike the one we ended up with). I do feel that architects are at the forefront of developing the concept of "not invented here". We were not able to change this very much.
2. We heard that although there was a pub site it was extremely unlikely any company would build a pub; at 750 houses, (the number planned at that time), with no through road, the village simply would not be big enough. Once we got wind of this we talked to brewers, pub companies and people involved in the licensed trade, who all basically confirmed that view. Therefore we decided that the "Community Building" would also have to be the village pub. We asked for the designs to be amended to incorporate a proper bar servery, cellar and lounge.

These two things together lead, essentially, to The Centre as a building as we know it today. A building that is not a village hall; and which requires staff to be present at all times.

OK, so we had a design; not exactly what we wanted, probably expensive to run, but potentially a great facility for the village. That was the easy bit; the more challenging were to be: Who would own the building and how would we set it up as a business?

Who would own the building?

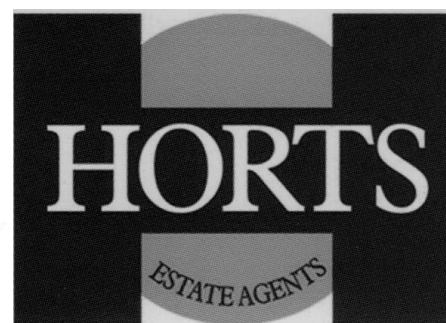
From our visits to village halls and community centres it seemed clear to us that ownership by the Local Authority was not ideal; some were in a very poor state. We felt that the only way to get a top-class facility, and to keep it that way, would be for the village to own it. There could be a separate 3 page article on all that ensued thereafter, but eventually it was agreed that it would be given to the Parish Council; it was handed over in November 2006.

I will write about setting it up as a business in the next newsletter.

While on the subject of why The Centre building is as it is I also thought I would clear up the confusion that I know exists regarding the Church and its relationship with The Centre. The Church (of England) was offered land free of charge in the village to enable them to build a church; however they declined. Then, about 8 years ago we heard that there may be more plots in the village than there was permission to build on. I approached our then Borough Councillor, Michael Harrison, who was involved with the Peterborough Diocese, to say that maybe a way could be found to release land for a church. He spoke to the Diocese, who said emphatically 'no'.

So the reason there is not a church building in the village is because the church authorities declined the opportunity. That is why the S106 Agreement gives the Church use of the "Community Building".

Bob Littler



NEEDS YOUR HOUSE!

Unhappy with your current agent?
For an unrivalled personal service who better than a fellow villager to sell the dream (and your house) to our bank of clients?

Office: 01536 790118
Mobile: 07970607085
Email: ray.jacobs@horts.co.uk

Fantastic Sales Success
Due to a record breaking month of new instructions and sales we desperately need more village properties. I urge you to call us TODAY if you are thinking of selling or letting a property. We are achieving close to and asking price offers currently; along with our famous customer service reputation there is only one agent you need to contact.

RAY JACOBS ...

..your local property consultant
for Horts Estate Agents



Mawsley Author

Mawsley once again shows just how much talent there is in the village. Richard Hoy, one of our longest established residents is publishing his first book— **‘No Worries’** in July. It’s an anthology of fourteen short stories that he’s written, drawing, no doubt, on his long career in commerce, law, local government and the army. Look out for details of his local book signings later in the year.

Richard has also written his first novel, which he hopes to publish a little later.

Nature on your doorstep

usually a stroll round Mawsley & District with Les and Paul (but not this time)

Paul

As I stood on my doorstep the other evening watching the sky grow darker and darker I considered how Les (thoughtlessly on holiday) and I were going to find time to stroll around Mawsley for us to deliver our pieces before the deadline. I made a decision to do my bit literally from *My Doorstep*!

It had been one of those superb azure skies bitterly cold windy late February days. The sun had shone all day. Dusk turned to night allowing a brilliant celestial body to hang in the velvety western night sky, not a star but planet Venus. Now was the time to see five planets visible if conditions allowed. Venus, a fading Mars and a bright Jupiter at nightfall. Saturn in the late night and pre-dawn sky and Mercury in the east just before dawn. What could be more natural than the night sky almost untouched by human hand.

Eve (my wife) that afternoon spotted a female Merlin on our stone wall, hunched facing into a strengthening wind with feathers puffed to increase her 'tog rating'. Luckily I saw her before she dropped out of sight. These members of the falcon family are our smallest bird of prey. They can be seen if you are lucky over open country side hunting smaller birds such as sparrows and larks, but will take insects like dragonflies or moths and the odd small mammal.

Around Mawsley we are fortunate in having seven species of raptors, five diurnal (day time) - Red Kite, Buzzard, Sparrow Hawk, Kestrel and in summer the Hobby and two species of nocturnal (night time) - Tawny and Barn Owl regularly visiting the area. We have seen or heard all of these in 10 years living here in or over our garden.

Species of birds seen in our garden total 27 to date with a further 16 seen in the skies over. Ranging from an Osprey gliding effortlessly high in the sky to a busy little Wren fussily picking its way through our clematis and pots of violas.

In March watch out for hares dashing across open fields and boxing with each other. Contrary to popular belief it is not males fighting over females but females warding off male advances when not quite ready to breed. Places to see Hares are open fields virtually anywhere so keep your eyes peeled for this magical spectacle.

If you are interested in learning more about our wonderful varieties of birds to be seen locally please visit RSPB site www.rspb.org.uk

Les

Yes I am back after a visit to Morocco. I thought I would start with a flowering plant which is common in much of Africa and the Mediterranean which I saw there and which most people who’ve holidayed in those parts will remember with affection. This is the strikingly colourful and rampant Bougainvillea. Believe it or not, like a lot of common flowering trees and shrubs we see in our gardens here, the Bougainvillea never existed in the above areas much before the 1800s, having been discovered in its native home land of Brazil and Peru just before that.

Just to list a few trees that are in the same position here (but not from South America), we have pine, elm, chestnut, and many conifers. However, when it comes to a true UK native tree, we cannot do better than the Rowan, or mountain ash. Commonly landscaped in Mawsley, this tree has bright red berries at the end of summer, and is renowned for its hardiness (hence “mountain”) and will grow in the most difficult of conditions.

Say no more!



Mawsley, The Nearly Village – *Not A Social History*, Part VI

By Professor Ed Case, FRS

Cometh the Hour.

The villagers of Malasleau talked endlessly about Middletown's windmill, the issue festered within their very souls. They became infatuated with the problem and, as a result, they became more and more insular – shunning contact with other villages and virtually stopping the movement of individuals in or out of Malasleau. This did have certain benefits for, as the Black Death swept across Europe in the 1340's and 1350's, it side stepped Malasleau and not one case was mentioned in the Parish Chronicles. Indeed, the only reported death between 1349 and 1354 was as a result of over indulgence during an elver eating competition.

In an attempt to freshen the water in the village pond eels had been introduced by the Warden of the Water (a little known title still held by the Chair of the Parish Council) in 1345. Due to limited controls on their breeding by 1350 the pond was a seething mass of eels and so at the spring solstice of each year a competition was introduced whereby each male villager over the age of seven was to eat as may elvers as possible between sun rise and sun set. An unnamed male died during the competition in 1353 and, as a result, The Warden of the Water ordered the removal of the eels before the following years breeding season. To this day, eels remain banned from the confines of the village and a recent planning application for a smile Pie and Eel Restaurant in Barnwell Court was voted out due to the requirement to apply the 1353 local statue.



*A Malasleau delicacy of elvers
on bread*

Anyway, back to the windmill which, apart from the Eel issue, was the only talking point for many years. The devastating impact on local trade, due to the self-imposed isolation of Malasleau, badly affected one village resident – a successful local entrepreneur who sold feedstuff for cattle, horses and donkeys. As his fortune dwindled his mind began to turn and by 1356 he was ready to take action.

Cont'd ➤



IR

Ian Ramsay @ Mawsley

Quality Painter & Decorator

'Proudly serving Mawsley & surrounding villages for 12 years'

- Domestic & Commercial
- All aspects of interior painting
- Wallpaper hanging
- Fitting of coving, skirting & dado
- Exterior painting of windows, doors and masonry
- Floor & wall tiling
- Garden fence, decking and furniture painting

For a free, no obligation quote and very competitive rates, please contact Ian:

01536 790884

07899814014



www.facebook.com/IanRamsayHomeDecor EMAIL: ianramsaydecorating@hotmail.co.uk

Cometh the Man.



An early sketch of Samuel Parsons as he rode from Malasleau and into history

Known locally as the “Donkey Oats & Hay Man”, Samuel Parsons, had lived in Malasleau for some twenty five years and had built what was then one of the finest houses in the village, known as The Manse. With his business faltering, and being slightly deranged, he set out one morning on his trusty steed to confront the villagers of Middletown and demand the destruction of the windmill. The villagers of Middletown had almost forgotten of the existence of Malasleau and laughed in poor Samuel’s face. He became enraged and, picking up a jousting lance that just happened to be laying at his feet, he remounted his horse and charged headlong for the windmill despite the pleadings of the villagers of Middletown.



Villagers of Middletown plead with the Donkey Oats & Hay man not to charge at the windmill

Now, windmill technology was primitive, and the Dutch building style of Ol de Groosvey called for limited use of anything to stick the building bricks together, when Samuel landed his first blow large sections of the mill fell to the ground. Within a few more charges the windmill had become a pile of rubble. Delighted with his work, Samuel rode off into the sunset and was never seen again. It is believed that he may have travelled abroad and settled in Spain where his story would have been told over the ages until it was chronicled by Miguel Cervantes in 1605 – the translation into Spanish however did result in much changing of names and events but, Don Quixote – The Man of La Mancha is undoubtedly the tale of our Samuel Parsons – the Donkey Oats and Hay Man.



As an aside, from the day the windmill fell local builders have referred to bad practices as “building in the “Ol de Groosvey” which, over time, was bastardised to “the Old Gorse Way”. It was somewhat ironic therefore that, in the development of the current village, the builders should choose to name one of the first completed streets after the old Dutchman who had caused so much strife in the 14th Century.

An example of “Ol de Groosvey”

ROB PRICE

Automotive Services

Price Automotive Services Ltd

- Petrol and Diesel MOTs
- Servicing and Repairs to any make, old and new
- Full diagnostic service
- Air conditioning service and refresh
- Clutches, brakes, welding, exhausts, shocks
- Free local collection and delivery or run-back service available
- For friendly and efficient service or advice please call

01536 790901

146 Northampton Road
Broughton
Kettering
Northamptonshire
NN14 1NS

Telephone/Fax: 01536 790901
Mobile: 07850 960350

From the Editor

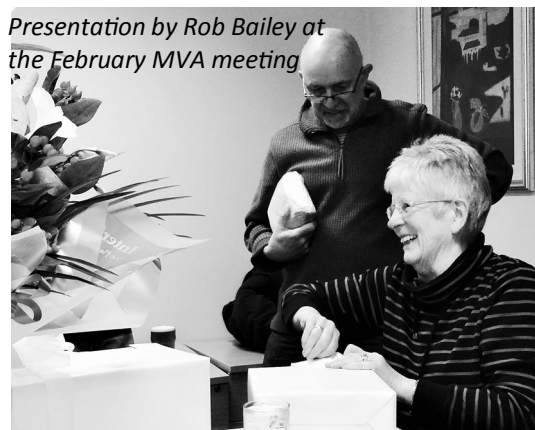
Thank you!

Well, you could have knocked me down with a feather! There I was at yet another Sunday evening MVA/TCAM monthly meeting, minding my own business, when suddenly I was being presented with gifts from you!

Not necessary and a complete surprise but much appreciated. Thank you, Mawsley villagers, for your generous gifts on my retirement from newsletter duties.

I will treasure the Dartington Crystal vase, engraved plinth and glasses as a lovely, 'Glitzy' reminder of these busy years. The vouchers will be put to very good use—almost certainly garden related. Thank you, again.

Presentation by Rob Bailey at the February MVA meeting



So why, having been sent off with such largesse, am I still here? Because we are still looking for a replacement editor or editorial team. I will produce one or even two more editions to facilitate a smooth transfer but I will not be involved after the summer holidays. Is this something you could do for the village?

I am pleased to report that with effect from the next edition the newsletter advertising administration is being taken over by the team at The Centre. They will deal with the booking of advertising space in the newsletter, invoicing and accounting—so that is one job that the new editor will be relieved of. Thank you, TCAM.

Mawsley Contact Details

Mawsley Villagers Association (MVA)

mva@mawsleyvillage.co.uk

Chair: Rob Bailey 790557

Other positions vacant

Mawsley Parish Council

pc@mawsleyvillage.co.uk

Chair: Bob Littler 791447

Vice Chair: Cllr. Richard Barnwell
07885 431520

Clerk: Diana MacCarthy
mawsleyclerk@tiscali.co.uk

The Centre @ Mawsley

Tel: 799528

www.thecentreatmawsley.co.uk

hugh@thecentreatmawsley.co.uk

Mawsley Medical 791300

Mawsley News & Views Editor

Pat Rowley 791881

rowleypj@btinternet.com

Neighbourhood Watch Village

Co-ordinator Christine McIvor

chrismcivor@hotmail.com

Mawsley Church

Rev'd Canon Brian Withington

K 791373 revdbrian@uwclub.net

Revd Nicki Hobbs 01536 799522 or

email revnicki@familyhobbs.org.uk

Anthea Cane (Ch. Warden) 07596022525

anthea76@hotmail.co.uk

Northants. County Council

Cllr. Jim Hakewill 01858 467686

jhakewill@northamptonshire.gov.uk

MP Philip Hollobone

0207 2198373 or 07979 850126

hollobonep@parliament.uk

Mawsley CP School 799182

Headteacher: Mrs Elaine Wright

Taylor Wimpey

Chris Leeson 0116 281 6400

Kettering Borough Council

Cllr. Jim Hakewill 01858 467686

jimhakewill@kettering.gov.uk

Cllr. Cliff Morton

cliffmoreton@kettering.gov.uk

Community Development Officer

Tim Bellamy 534355

timbellamy@kettering.gov.uk

**Next News & Views will be out on
13th May 2015**

Copy date is Friday 1st May

Adverts and newsletter items to

Pat Rowley Tel: 791881 rowleypj@btinternet.com