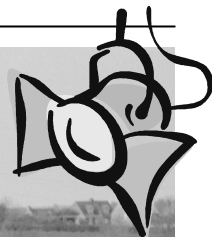




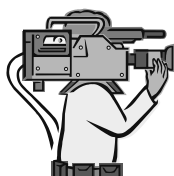
Mawsley News & Views

May/June 2014



Mawsley in the Spotlight

Mawsley has been under considerable close scrutiny this month from many different angles.

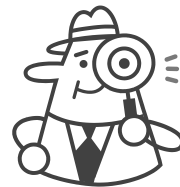


Firstly Phil and Kirstie of Channel 4's '**Location, Location, Location**' were here for several days with a camera crew and a house-hunting couple who want to relocate to rural Northamptonshire. They had their eyes on a property in Mawsley which kept Ray Jacobs, our very own Horts estate agent, very busy for a couple of days. It's one thing having your home photographed for the estate agent's particulars but quite another to open it up to several million viewers on prime time TV.

Did they choose the Mawsley property? You'll have to wait and see when the programme is televised. (See page 9 for the full story.)

This was closely followed, last week, by the scrutiny of the **Best Village** judging team who spent 2 hours here meeting a small representative group of residents who were able to answer questions about the information already provided on the entry form before making a tour of the village.

What was on the entry form? It is now on the village website at www.mawsleyvillage.co.uk/bestvillage and well worth reading!



What did the judges think of Mawsley? We'll have to wait until the results are announced in mid-July.

Inside News & Views

The Centre	3	School	17
MVA	4, 5	Village groups	19 - 23
Parish Council	7	Local nature	24
Word on the street	10, 11	Local Authority	25
Church	13	Local history	27
What's On	14, 15	Contacts	28



And quite a different kind of scrutiny - **CCTV cameras** have now been installed both inside and outside The Centre. The Parish Council has been investigating the various options for some time now and is pleased to have been able to finally go ahead with a system that is providing good coverage, is proving straightforward for the staff to operate and which can be upgraded if necessary when finances allow.

Thanks to Tom Sanders for the unusual view of Mawsley above.

Mawsley Fun Day is on Saturday 12th July.

Mawsley News & Views will deliver a special edition, including your programme of all events, to your door in the week before.. Don't miss it!

Advanced Loft Ladders

- Local and reliable with 20 years experience
- Create safe and easy access to your loft
- Providing valuable storage space
- Loft Ladders and folding stairways supplied and installed
- Enlargement of existing loft hatches
- Loft flooring supplied and fitted
- Velux windows supplied and fitted
- Full public liability insurance
- All ladders guaranteed



Call now for your free survey and accurate quotation on

01604 677999 or 07840 933410

www.advancedloftladders.co.uk

Personal training in your own home

Whether you're looking to lose weight, tone up or gain muscle mass joining a gym is really not necessary, nor do you need to buy all sorts of expensive training equipment.



Training in the comfort of your own home with a fully qualified trainer is just as beneficial.

Included in package

Client portfolio

Tailor made progressive exercise programme made fun yet effective

Fully personalised nutrition plan

If you'd like to know more contact me and I'll send you an info pack and also offer you a free taster session. 😊

cormacmeade91@hotmail.co.uk 07990928683



**Happy 6th Birthday
Kitty**

All our love
Mummy, Daddy,
William, Max and
Gizmo xxxxxx



*Congratulations
to Ian Claydon of Symonds
Way on his forthcoming
marriage to Nicola Luck of
Northampton on the 31st May
at the Castle Ashby Church.*

*Very best wishes from
Mum & Dad, sister Gemma
and big kisses from
Madeline and Jacob.*



SANDRA

***Clothing Alterations &
Repairs***

Ladies & Gents

Also

Silk Christening wear

Special Occasions Wear

Daywear and Handknits for

Babies and Children

7 Brambleside
Kettering
NN16 9BH

01536 521481



Web: www.thecentreatmawsley.co.uk

Facebook: The Centre at Mawsley

Twitter: @centre_mawsley

Phone: 01536 799528

the centre at Mawsley

In my interview in the March newsletter I mentioned that I was looking forward to the challenges the role would bring; little did I know that this involved quite as much as it did! I have thoroughly enjoyed my first 3 months here which have been extremely rewarding.

I have been delighted with the welcome I have received and would like to thank you all for the support I have had from every one associated with The Centre. I remind myself every day that this community is fortunate to have such a facility and I feel privileged and proud to come to work here, to share in the excitement and the success.

The first three months have seen a number of Children's Film nights, Quiz nights, the Easter Party, the Easter Egg Hunt, a Wine Tasting Evening, a number of Big Screen Events and several private functions. The Centre has been a real hive of activity.

The team have responded well to the changes I have introduced and I hope that you have seen an improvement in a number of areas. New uniform, a new code of conduct, new cellar management, new brands, new ways of working and improvements to processes are just some of the changes made and clearly it will take time for these to bed in. I am confident however that these will make a real difference to the professional service The Centre offers its customers.

The Centre has delivered a solid financial performance for 2013 and there has been a promising start to 2014. This is a credit to the team and the Management Committee and provides a great foundation on which to build. The challenge to engage with even more members of the community and to provide a service to the community that is valued is still my focus. The team here are determined to deliver this.

Back in the November/ December 2013 newsletter my predecessor raised the issue of the poor levels of food sales and stated that the food offering would have to stop if sales did not increase. Unfortunately sales have decreased even further since then and during my review of the business it became clear that the Centre lacked:

Appropriate food preparation and serving areas and cooking facilities.

The right level of experience in food preparation, cooking and service.

A sustainable level of sales to make the service financially viable.

If The Centre was to offer food again it would need a substantial investment both in terms of the facilities and staff and given the other operational and budgetary priorities, we are not in a position to reintroduce it on a regular basis.

However The Centre will, in future, offer food at specific events. These will be advertised and publicised in advance with the first events taking place during the Spring Bank holiday period and throughout the World Cup in June. I am currently in the process of organising a number of future events so please do look out for announcements on the notice boards, on our website or on facebook – TCAM Bar.

Before I sign off may I remind everyone that the Village Fun Day is being held on Saturday 12th July 2014, so please put the date in your diary and help make it another great success.

Thank you for the first three months, it has been a genuine pleasure and for those of you who have not yet met me or have not visited the Centre recently, please drop in for a chat and a cuppa.

Best wishes

Hugh



For details of all events happening at The Centre

- ♦ see page 15 for 'What's On'
- ♦ telephone 01536 799528 or
- ♦ look at our website www.thecentreatmawsley.co.uk

Mawsley Villagers

There is a team of volunteers who run the MVA and some of them are also directors/management team of The Centre at Mawsley (TCAM). These are the people behind Fun Day and Fireworks, who recruit and employ the staff of The Centre and make policy decisions about how it is run. Here the main players introduce themselves.



John Holton - MVA & TCAM

I moved to Mawsley in 2002 when it was a village in construction with no facilities at all. The opening of The Centre was a great step forward providing a focal point for the village community – user groups, sports and social.

I have been a member of the MVA and TCAM for many years now driven by a passionate desire to make The Centre a place for all Mawsley villagers.



Simon Wisdom - MVA & TCAM

My family and I have lived in the village for 6 years and my motivation for supporting the MVA and TCAM came from reading the articles here in News and Views about the challenges of running The Centre and I joined the team in 2009. Outside of village life I work as Managing Director for a global business trying to support a team of approx 8500 people. Overall I am fascinated by and love people and none are more important than the two jumping all over me as I write this and 'the Boss' who make it all worthwhile.



Vicky Waine - MVA

I moved to the village in September 2006 with my husband and we now have a 5 year old daughter, Beth, who goes to Mawsley School. For me the community feel that we have in Mawsley is the main reason I love it here so much (that and the great friends we have made!). I wanted to get involved in the MVA to have a say for families in the village and to help keep the sense of community that I think makes Mawsley such a special place to live.



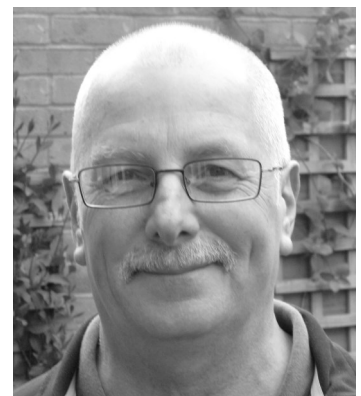
Stephen Farthing - MVA

I have lived in Mawsley for about 11 years with my wife Clare and children Oliver and Charlotte. I have been involved with the MVA for about 10 years and have always helped out with the Mawsley fun day, bonfire night and many other projects. We have always enjoyed living in Mawsley and have made many friends while here and been to many excellent social events. Mawsley has always had a strong sense of community spirit which is what keeps us here.



Steve Thorpe - MVA & TCAM

I have been an MVA and TCAM Director for just over a year. I moved to Mawsley in 2007 and live with my future wife Claire and our 3 children. I love being part of a community and contributing towards making this village a great place to live. I became a director of TCAM so that I could help make The Centre a better and safer place for everyone to use and enjoy.



Martin Bentley - MVA

I moved to Mawsley with my wife Andrea in 2007. I wanted to make a contribution to village life so became an MVA Director in 2008 since when I have helped organise village events and provided support to village projects. For the last 4 years I have been responsible for organising Mawsley's annual Bonfire Night celebrations. I also help maintain the grounds at TCAM, a task taken on since taking early retirement 4 years ago. Mawsley is great place to live and if, through my efforts, I can contribute to the great community spirit that exists, then I consider my time well spent.

Association



Rob Bailey

MVA Chair & TCAM

There is a longer article about Rob in the November/December 2013 edition, so not much more to add.

As you probably know, I am a relative newcomer to the village, (three and a half years here against the double figures now clocked up by some village early settlers), but I remain struck by the commitment and resolve of a substantial number who give readily of their time and expertise to support events, initiatives and fellow villagers .

If you would like to get more involved with the MVA or TCAM Management team you are welcome to attend their meetings which take place one after the other usually on the first Sunday in the month at 5pm (although the June meeting will be on 8th June.)

The MVA minutes are posted on the Mawsley Village website.



It's busy, busy and business as usual at the toddler group! With only a short term this time we have been looking at different colours. We have painted, printed, glued, modelled and created and have had lots of fun. We have been fortunate enough to have some new things to play with including the new play panels which can be used to create a house, a shop, doctors' surgery, hairdressers or anything else our imaginations want it to be! Going forward into our last term before the summer holidays we will no doubt be having just as much fun and we look forward to seeing you all there. Everyone is welcome, from birth to school age. Please don't hesitate to contact one of us for any more details.

Youth Club

Another action packed few months is planned for Youth Club. We have already had a visit from Wayne Stanton and his young helpers who gave us a fantastic demonstration of British Chinese Kickboxing. We all found the demo very impressive, especially the amazing confidence shown by the young people participating.

Coming up in the next few weeks we have Touch Rugby and Film Night, as well as crafts for Fathers' Day. We are also hoping that as the weather improves we can get out onto the field and play some games. We have some 'kwik cricket' and rounders equipment, but if anybody has any other spare sports equipment knocking around that they would like to donate then just let me know!

We are really keen to introduce lots of new and exciting activities each week so if you are involved in a sport or activity that you think that the kids would be interested in trying or seeing then please get in touch with me on 07525 488906 or victoriawakerley@hotmail.co.uk.

We are also still looking for people who can spare time to help us at Youth Club, even if just for the occasional session here and there. A CRB check (now DBS) will be required but we will pay all costs for this.

Youth Club runs every Wednesday evening from 6.30pm till 8.30pm at TCAM. We have a tuck shop, and now serve free squash. Entry is £2 per child which covers all activities.

Vicky Waine

Autumn Ball

The Mawsley Ball is back - with fresh faces and new ideas!

We are excited about bringing you an opportunity to get dressed up and have a fun night with friends, without the worry of having to book a taxi home.

We're in discussion with new caterers to provide a delicious three-course meal and there will, of course, be dancing!

More details and pricing will follow but, for now, put the date in your diaries:

Saturday 4th October - The Autumn Ball

Kate Baxter & team

Baby & Toddler Group

Thursday mornings 9.15 - 11.00 am
in the Main Hall at The Centre
£1.50 for the first child and 50p for additional children.

We welcome all parents/guardians and their children from newborn to 4 years.

Contacts:

Anthea Cane (07596 022525)

Krista Alford (07742 601100)

hate oven cleaning?

OVEN REVIVE

Oven cleaning at its best

DOMESTIC & COMMERCIAL

- OVENS
- HOBS
- EXTRACTORS
- MICROWAVES

Please call Paul

07545 254975

£5 off with this advert



Mobile Beautician

If you would like spray tans, eye lash extensions, brow and lash tinting, 2 week nail polish, inch loss body wraps and more all at reasonable prices then contact Bronze Up Nails & Beauty.

We are available any time between 9.15 am and 2.45pm
Mondays and Tuesdays, weekday evenings and weekends.

Please ring for an appointment on 07521396905.

Website: www.bronzeup.co.uk

To advertise your business in Mawsley News & Views
please contact Pat Rowley
rowleypj@btinternet.com K 791881



IR

Ian Ramsay @ Mawsley

Quality Painter & Decorator

'Proudly serving Mawsley & surrounding villages for 12 years'

- Domestic & Commercial
- All aspects of interior painting
- Wallpaper hanging
- Fitting of coving, skirting & dado
- Exterior painting of windows, doors and masonry
- Floor & wall tiling
- Garden fence, decking and furniture painting

For a free, no obligation quote and very competitive rates, please contact Ian:

01536 790884

07899814014



www.facebook.com/IanRamsayHomeDecor

EMAIL: ianramsaydecorating@hotmail.co.uk

Mawsley Parish Council

Village burglaries

Although the crime figures for Mawsley are relatively low the Parish Council has been concerned about the number of recent burglaries and Councillors have discussed this with the Rural Policing team. Most of the burglaries appear to be opportunistic rather than targeted and result from insecure homes, garages and vehicles. PCSO Jason Parish has reminded us that, sadly, villages are no longer places where you can leave your doors unlocked or your property unattended.

We have therefore arranged for the enclosed **Home Security Checklist** to be delivered to you with this newsletter as a reminder of the measures that should be taken to keep your property safe. Please go through it and keep it handy. Don't be an easy target for the burglars.



Annual Parish Meeting

The Annual Parish Meeting will take place on
**Sunday, June 1st at the Centre starting at
3.00pm.**

The Annual Parish Meeting is unlike a normal monthly parish council meeting because it is a meeting of the electorate, not a meeting of the council and is intended to provide an informal opportunity for residents to meet with the council and to hear about its achievements on your behalf in the past year and its plans for the future. It will enable residents to ask questions and talk to the councillors and officers on any issues of interest or concern which they may have.

CCTV at The Centre

The Parish Council has been researching the different systems available and has now installed cameras both inside and outside The Centre.

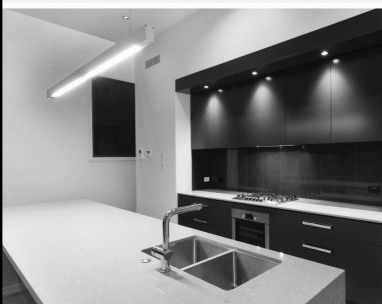
Parish Council Meetings are held at 7.30pm at The Centre, usually on the third Monday of the month. Future dates are:

19th May, 16th June, 21st July

Members of the public, resident in Mawsley, are welcome to attend.



Kitchen &
Bathroom
Specialists



Kitchens

Designed for you, with your lifestyle
and priorities in mind.
From a small swap to a new extended design,
we can take care of every little detail!



About PMA

We have a saying, **NOTHING IS IMPOSSIBLE!**
A positive, mental, attitude to your budget,
time frame and your home.

We take great care and look after you for **2 YEARS AFTER**,
with a free call out warranty!

Good old fashioned service included in our price.
All organised, designed and arranged with a feminine touch.



Bathrooms

Clean lines, lovely warm
lighting and a bathroom to
relax in, we source, design,
and fully install, so you can
relax from day one.

Rookery View, Mawsley NN14 1TR

t: 01536 799 076

m: 07553 371 598

e: info@pma-uk.co

www.pma-uk.co



Northampton's specialists in UK & airport transfers for personal and corporate clients

- Airport transfers
- Seaport transfers
- Business travel
- Private jet liaison
- Courier & document delivery
- Wedding cars
- UK & holiday transfers
- Sightseeing tours
- Restaurant & theatre trips
- Up to six passengers and luggage

Fully licensed & insured with Northampton Borough Council

For more information or to book call now on: **07940 072754** or visit **www.voyageruk.com**

'First class service at economy prices'

Pilates

- improve posture
- strengthen the spine
- focus the mind
- tone your body



Contact Carrie to book your place 07908 719722

info@carriefern.com www.carriefern.com

SATURDAYS 10.20am BROUGHTON VILLAGE HALL

Hair by Chris

At Strands

78 High Street, Broughton

- *Friendly professional service for all the family*
- *Easy parking*
- *Evening appointments available*

Call Chris 01536 791065

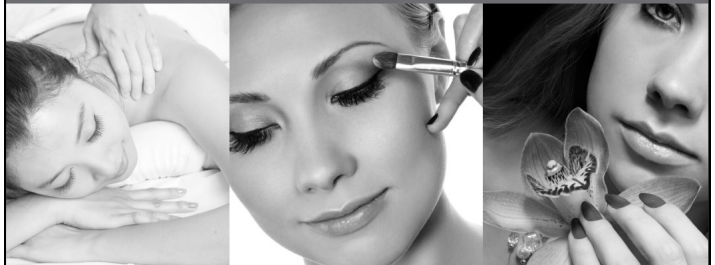


M.A.Botterill General Maintenance

Kitchen Fitting/Repairs Painting Flooring General Maintenance Skirting Doors Interior Fitting

Contact Marc on 07525 169661

e-mail: marc.anthony1975@gmail.com



Professional Beauty Salon

- Manicures & Pedicures
- Waxing & Threading
- Massage • Facials
- Spray Tanning
- Lashes • Gels
- Make Up • Weddings
- Pamper Parties

10 % OFF With This Advert

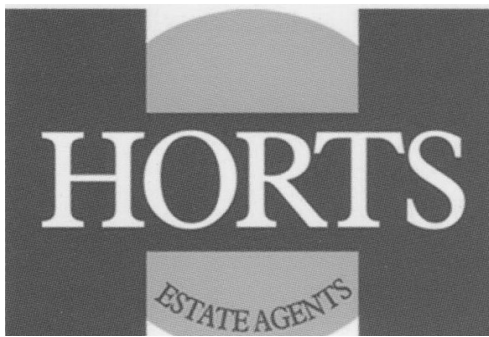
gelish[®] Soak-Off[®] GEL POLISH
Libby Lolo[®] MINERAL COSMETICS

siennaXX

Tel: 01536 760 222

www.sanctuaryofbeauty.co.uk

3 The Oaks Braybrooke Road Desborough



Homes urgently required in Mawsley

Sales and enquiries through the roof. Desperately need more properties of all types for waiting buyers.

Call **Ray Jacobs**, your local property consultant for Horts Estate Agents, now for a free, no obligation, valuation.



Office: 01536 790118 Mobile: 07970607085 Email: ray.jacobs@horts.co.uk

LOCATION, LOCATION, LOCATION

As some of you are aware I was fortunate enough to have been rubbing shoulders with two of the most famous 'movers' in the UK this week. Kirstie Allsopp and Phil Spencer from their hit Channel 4 TV series were in Mawsley Village this week filming a Horts property for a couple moving in Northants. Like millions of people, I watch and enjoy the show and to be part of it whilst helping to find a couple a new home was a real privilege.



An initial contact was made by the research team just after the Easter Bank Holiday. This in turn led to the producer and director visiting Mawsley to look at two houses we have on the market currently. At this stage the research team were still looking at 12-15 properties in various areas within Northamptonshire before they made a final decision on the three to be chosen. We also discussed the facilities here and village life in general. However, they didn't just take my word for it - they also spoke to another local expert, Mr Mawsley himself, Bob Littler.

Another week passed before the call to say one property had made it onto the show and fitted nearly all of the criteria specified by the couple. Then it was all systems go and some preliminary filming was done on Monday 5th which got the Facebook chatter drums beating, leading to the famous duo visiting later on that week.

As well as working with their team on the production of the programme I also got time to discuss with Kirstie and Phil the housing market, what the current trends are and most importantly sharing some advice that will help benefit buyers and sellers alike.

Phil also commented on our unique For Sale boards, rightly pointing out that it is the model adopted across America, parts of Europe and South Africa. Only a handful of Estate Agents operate in this way currently but we believe a lot

more will follow our lead in the future: local property consultants with an in-depth knowledge of their area providing a 1-2-1 personal service to both buyer and seller. At Horts we pride ourselves on a professional service based on experience and trust. When people

sell their home with me they have my personal service at all times including direct mobile phone access. This happens from the moment we meet you to the moment we move you.

There is no doubt that the economic climate is improving and that often means individuals, couples and families are looking to move. Those people want impartial, sensible and, above all else, honest advice and that is what we provide. Please also remember I don't just sell houses in Mawsley but all over Northamptonshire. If you have a friend, colleague or family member thinking of selling their home please pass them my mobile number to call me direct and I would be happy to help with a free no obligation valuation of their home. For any new leads that result in a sale through to completion I am offering vouchers for any shop up to the value of TWO HUNDRED pounds to the person who passed the client to me. Remember this only applies to people who contact me direct via mobile or email, NOT if they ring the branch in Northampton as they then get passed to a different consultant.

So, did the 'Location' couple buy in the village I hear you ask? The honest answer is, at the time of writing this article, I don't know. They were spending this weekend (10th-11th) considering the options. I guess we will all just have to watch the programme which will be aired around September to find out. All I can say is Kirstie and Phil were very positive about Mawsley and thought it would be a lovely place to live, but then you know that already!

Call us at any time for your property needs: **Ray and Emma Jacobs, Horts Estate Agents**

Personal service from the moment we meet you to the moment we move you.

Northamptonshire Best Village Competition.

As we announced in the March/April News & Views, Mawsley Village has been entered into this prestigious competition and we asked residents, **'What makes Mawsley a special place for residents and visitors?'** Your responses were included, unedited, on the entry form and the following are extracts from some of them.

A bit magical, with wide range of clubs and activities.....**Vicky**

So much done...in a short time.....**Rob**

Everything we need, in one place.....children love the pond....**parents of the 'under 5s group'**

Like minded people, who care for the place they live.....**Tom S**

Brings together people from all walks of life"**Gareth**

Friendly and welcoming atmosphere....**Nikki**

Beautifully designed village layout....**Heather & Rob Mallinson**

Definite sense of community here....**Pat D**

Enviably characteristics of 'more established villages'**Gil & Andrea Lucas**

Starry nights, utterly contented, a wonderful place to be...**Frances & David**



'children love the pond'



← *'welcoming'*

'beautifully designed' →



CHERYL & STEVE BUCKLE
info@doorstepswich.co.uk

MAWSLEY business
01536 331598

At Doorstep Sandwich we provide a range of carefully selected menus giving you a flexible choice within your catering budget. We offer a selection of menus to suit your occasion.

FINGER buffet

SIMPLY sandwiches, wraps & rolls

AFTERNOON tea

FORK buffet

CHILDREN'S party

PARTY nibbles

Children's party from £3.50 per child

Finger buffet from £4.95 per person

Afternoon Tea from £6.00 per person

Fork Buffet from £9.95 per person

All our food is freshly prepared to order and hand delivered ensuring it arrives with you in perfect condition. We pride ourselves in providing food that is fresh, tasty and well presented. All of our cakes are homemade and offer a delicious treat as part of your buffet. We are pleased to be able to accommodate special dietary requirements as part of any of our menus.

To order or discuss your menu options please call Cheryl or Steve on 01536 331598 or email info@doorstepswich.co.uk

We offer free delivery within a 20 mile radius of Kettering.

Read what our customers have to say

"The portion sizes were very generous!" "The food was very tasty and fresh."

"The presentation was excellent. We will certainly use you again and recommend you to others."

India 2 Mawsley



Contemporary Indian & Bangladeshi Restaurant & Takeaway

OPEN 7 DAYS INCLUDING BANK HOLIDAYS
5pm - 11pm

Due to the success of our new restaurant we regret that we no longer make deliveries. Takeaway collections continue as usual.

TEL: 01536 791108/791018

www.india2mawsley.com

2 BARNWELL COURT, MAWSLEY

Word on the Street also asked a group of residents who have lived here from 6 months to 8 yearsand some visitorsthe same question.



Chris Tedore with Elizabeth, Ben....and Alfie.

"Moved here just six months ago, from Desborough. Mawsley has 'village feel with town facilities'. The school is outstanding. Wife Jennifer has quickly settled into the close knit community, with interaction through six Facebook sites and News & Views"

Sarah and Mark Hart

"Lived here almost 7 yearsExcellent facilities, family orientated, safe feeling, great neighbours who always say hello. Our friend from Kettering calls it....Toytown ! "



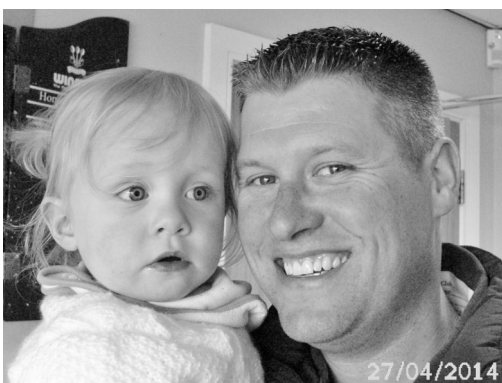
Clare Bentley

"Friendly community, with lots of events and opportunity for voluntary participation. Rural setting, just like previous address at Moulton ...but this is so much a better place to live."



Nikki Jones

"Moved here 18 months ago, with Luke...from Kettering. Love the location at the end of Long Breech, overlooking farms and rural setting but still close to family in Kettering"



Nick and Ella More

" Moved here with Lian...7 years ago. The village is family orientated, well cared for, safe environment, great community spirit with a sense of belonging."



Laura Cross

"Been here over 7 years, with Marc. The village has excellent facilities, the Medical Centre, the shops and Centre....in a clean and safe environment."



Our frequent visitors to the Bowls Club

Front row:
Cindy from Rothwell, Gil and June from Desborough.

Back row:
Ivan from Walgrave, Dave from Rothwell, Jim from Sywell, Gordon from Lubenham and Derrick from Desborough.

"Great facilities and a lovely, friendly group of people who have welcomed us into their club."



The White Horse at Old

01604 781297 whitehorseold@hotmail.co.uk



AT THE WHITE HORSE IN OLD
EVERY WEDNESDAY IS

PIE NIGHT

A homemade pie



WITH
CHIPS OR MASH
EITHER **GRAVY OR LIQUOR**

INCLUDES
a PINT of **BECKS VIER**,
a PINT of our house **ALE** or a
small **GLASS** of house **WINE**

Two or three choices available, including one vegetarian.
Choice of fillings changes weekly - see blackboard for details

BOOKING RECOMMENDED
please call 01604 781297

£9.95

EVERY FRIDAY NIGHT IS

Fish & Chip takeaway

BEER-BATTERED
(CATCH OF THE DAY!)

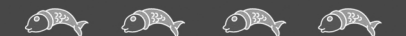


Large £9.95
Small £6.95

Served with chips and peas

RELAX AND ENJOY A DRINK WHILE YOU WAIT

FOR YOUR ORDER TO BE FRESHLY COOKED!



The White Horse
Walgrave Road, Old NN6 9QX
Tel: 01604 781297 www.whitehorseold.co.uk



The White Horse at Old

Walgrave Road, Old NN6 9QX 01604 781297 www.whitehorseold.co.uk



QUIZ NIGHT

Cash prize and drinks voucher to be won



first Thursday of every month
8.30pm start £1.00 per person

Booking Essential - call 01604 781297



LIVE MUSIC NIGHTS

THE LAST FRIDAY
OF EVERY MONTH
9pm ONWARDS
FREE ENTRY

All styles of acts ranging from acoustic to country, rock, indie, reggae, soul and pop.
See www.whitehorseold.co.uk for details.

The White Horse
Walgrave Road, Old
NN6 9QX (01604) 781297




The White Horse

BEER FESTIVAL

AUGUST BANK HOLIDAY
FEATURING
THE BEST LOCAL BEERS
HERITAGE CIDERS
HOG ROAST
BEER GARDEN
LIVE ACOUSTIC MUSIC
GREAT FUN
FAMILY
FREE ENTRY

The White Horse, Walgrave Road, Old NN6 9QX
Tel: 01604 781297 www.whitehorseold.co.uk

peas, broccoli, sprouts, carrots, squash, cauliflower, potatoes, cabbage, tomatoes, lettuce, radishes, courgettes, herbs

The White Horse, Old SEEDLING SWAP

Sat 24th May
12 - 3pm

- bring along any spare seedlings you have and swap them for some you don't
- meet other gardeners and swap tips
- cultivate community spirit
- tea, coffee and home-made cakes
- Pimms & lemonade promotion

marigold, sunflower, delphinium, aster, foxglove, hollyhock, nasturtium, viola, lupin, poppy, geranium, anemone, primula, salvia, cyclamen





New Curate for Mawsley Church

On 29th June, Nicki Hobbs will be ordained deacon at Peterborough Cathedral. After this she will be the Assistant Curate in the parishes of St Andrew Broughton and Cransley with Mawsley. Nicki, along with her husband, Mike, and daughter, Esther, will be living in Mawsley. They currently live in Peterborough, where Mike is a project manager for an engineering company and Nicki is completing her training for ministry.

Nicki introduces herself:

"I grew up in Hertfordshire, and met Mike at university in Cambridge, where I studied French and German. We got married in the summer of 2001 after we graduated and moved to Peterborough with Mike's job. I have worked in a variety of roles in the voluntary sector since then. I have co-ordinated several different services including a youth cafe, pregnancy advice service and the local Street Pastors initiative. I have written youth group programmes for Urban Saints. But my favourite job was working with bereaved children and families. It was so rewarding to be able to support them at such a difficult and painful time, but also really humbling to see how resilient, positive and caring children can be as well.



Nicki with husband Mike and daughter Esther

I became a Christian as a child, and my faith and church have been an important part of my life for as long as I can remember. My passions in church life are pastoral care, children's and youth work, and creative worship. But I'm really excited about the variety of different activities and services that the three churches offer, and I'm looking forward to getting involved in lots of ministries that are new to me. My favourite bit of the Bible is Romans 8. I love how it reminds us that nothing we do, and nothing that happens to us, will stop God loving us. For me that unending love of God is the key message of the Christian faith.

In my spare time I enjoy reading crime novels, taking photographs, cooking, and I'm currently trying to convince my body that it does enjoy running! I love sunny days, flowers, chocolate and a bit of pampering. Music has always been important

to me, and I play the violin, the recorder, and the piano (badly!). My iPod has everything on it from Bach to Bryan Adams, Graham Kendrick to Kylie, Madonna to Matt Redman.

Mike enjoys playing badminton and cycling. Esther is five. She loves all things pink. She enjoys drawing and reading, ballet, scooting and playing with Lego. She is very excited about making some new friends and playing and growing things in her new garden.

Although we will be living in Mawsley, we are really keen to get involved in all three churches and serve the people in all three villages. We look forward to meeting you all soon."

If you would like to find out more about Mawsley church then please contact either:

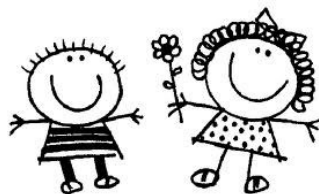
Rev. Brian Withington 01536 791373 or email revdbrian@uwclub.net or

Churchwarden Anthea Cane 07596022525 or email anthea76@hotmail.co.uk

Services at The Centre

1st Sunday 10.30am SPACE Tea, coffee and bacon rolls with children's activities all in the main hall
 2nd Sunday 10.30am Service with children's groups
 3rd Sunday 10.30am All age service
 4th Sunday 10.30am Communion service with children's groups

Ness Mileham's Kids Come First Childminding Service



Looking for after school childcare?

Children are cared for in a safe, happy family environment in Mawsley.

Vacancies available from Sept 2014 for after school

**Experienced Childminder
Ofsted Registered
First Aid Trained
Level 3 Diploma**

If you would like to discuss available spaces and your requirements feel free to get in touch

01536 791203/mob 07729 313008,
or email vanessa.mileham@btinternet.com

Summer Concert

Presented to you by the award winning

**Mawsley
Community Choir
with Polished Brass**

Saturday 28th June 2014

@ The Centre At Mawsley

7.30

£3 adults £2 under 14s

Box office: K 799487

The director of music Carole Lyttle promises a fine selection of music that will appeal to all!!

So come and enjoy an evening of singing!

What's On

MAWSLEY FUN DAY

at The Centre & on the playing field

SATURDAY 12TH JULY 2014

2pm until 6pm and then till late

Fun for all the Family



PLEASE CONTACT Hugh or Debbie

If you are:

- **A VILLAGE GROUP AND WOULD LIKE TO HAVE A STALL TO RAISE FUNDS FOR YOUR GROUP**
- **A BUSINESS AND WOULD LIKE A STALL**
- **PART OF A GROUP AND WOULD LIKE TO PERFORM IN THE MAIN ARENA**
- **ABLE TO HELP ORGANISE THE EVENT**

hugh@thecentreatmawsley.co.uk (or debbie@...)

or

01536 799528

Gardening for All

First Meeting

Monday 9th June 7:30 pm

at The Centre

£2 per person at the door (includes raffle ticket)

Guest speaker

**Richard Kibble - Kettering Borough Council
Parks & Open Spaces department**

New Members always welcome

Informal Friendly Informative

**Contact: Paul Richards on 01536 791898 or
eandp68@gmail.com**

Coach Trip from Mawsley to Blenheim Palace Flower Show Saturday 21st June

This Flower show offers not only the show but also the beautiful Palace gardens and, if you wish, the chance to visit the Palace too.

All included in the price of:

Flower Show, Palace & Gardens: £30 Senior £28.

Flower Show and Gardens Only: £24 Senior £22.

*Leaving Barnwell Court Mawsley at 8.30am
arrive 10.00am. No stop will be made on the way.*

Depart at 3.30pm arrive back at 5pm.

All times approximate.

If you would like to join us, please call Denise on 01536 791186 .

Payment please when booking.

Cash if possible or Cheque made payable to:
Mrs B Quinn, 37 Loddington Way, Mawsley.

FRIDAY NIGHTS - FAMILY FUN NIGHTS!

Bouncy Castle by Bouncy Wouncy

BBQ by Coffee @ NO.9

6TH JUNE - 13TH JUNE - 20TH JUNE - 11TH JULY - 18TH JULY
3PM – 8PM

QUIZ NIGHT

THURSDAY 29TH
MAY

8PM START

HOSTED BY
FREDDIE & SAM
&

THURSDAY 26TH
JUNE

8PM START

HOSTED BY CHRIS
& PHILLIP

PLUS RAFFLE!!

WORLD CUP FOOTBALL

14 JUNE – ENGLAND V ITALY – 11PM

(late bar until 2am!!)

19 JUNE – ENGLAND V URUGUAY – 8PM

24 JUNE – ENGLAND V COSTA RICA – 5PM

Pie & a Pint for £5 (19th & 24th)

28/29 JUNE – ENGLAND GAME IF WE
QUALIFY!

IF WE DON'T QUALIFY DON'T WORRY:

28 JUNE – BBQ & FREE INFLATABLES – 3PM

VILLAGE FUN DAY

SATURDAY 12TH JULY 2PM – 6PM

LIVE MUSIC FROM 6PM

LOTS TO EAT! LOTS TO DRINK! AND

DEFINITELY LOTS TO DO!

PUT IT IN YOUR DIARY NOW!!

CHILDREN'S MOVIE NIGHT

SATURDAY 31ST
MAY

Film Showing:

FREE BIRDS

&

SATURDAY 21ST
JUNE

Film Showing:

TOY STORY

All films are FREE
ENTRY!

Popcorn Available!

BANK HOLIDAY FUN!

12 NOON – 6PM

MONDAY 26TH MAY

FREE BOUNCY CASTLE & INFLATABLE SLIDE BY BOUNCY WOUNCY

BBQ BY COFFEE@NO.9

EVERYONE WELCOME, JUST DROP IN! BAR OPEN FROM 12NOON!

The Village Retreat Mawsley

*Our clients enjoy very private , leisurely
and undisturbed beauty treatments....*

Waxing

Eye Brow Shaping

Eyelash & Brow Tinting

Tantrick Spray Tanning

Eve Taylor Aromatherapy Facials

Collagen Facials by Marine Beauty

Luxury Manicures & Pedicures by Creative

Contour Body Wraps

*Take advantage of our very special 2 for £28.00 offer during
May and June...*

Express Facial • Express Manicure • Express Pedicure

*Choose any 2 treatments to have in the same appointment
and you only pay £28.00.*

Call Nettie on 07712 182231

*For a full list of treatments visit
www.villageretreat.co.uk*



plumbing & heating

P. VINCENT

**Reliable Gas Safe Heating Engineer
based in Mawsley**

- Boiler installations, servicing and breakdowns
- Bathroom installations and general plumbing
- Landlord certificates
- No fees for estimates or village call outs
- References available on Mawsley Facebook

*All work insured, guaranteed and
delivered with care*

Call Paul on:

07838 191617 or 01536 791597



ROB PRICE

Automotive Services

Price Automotive Services Ltd

- **Petrol and Diesel MOTs**
- **Servicing and Repairs to any make, old and new**
- **Full diagnostic service**
- **Air conditioning service and refresh**
- **Clutches, brakes, welding, exhausts, shocks**
- **Free local collection and delivery or run-back service available**
- **For friendly and efficient service or advice please call**

01536 790901

146 Northampton Road
Broughton
Kettering
Northamptonshire
NN14 1NS

Telephone/Fax: 01536 790901
Mobile: 07850 960350

MAWSLEY COMMUNITY PRIMARY SCHOOL

Report by Gareth Weston

So we are waltzing into summer once again and as the days (slowly) heat up another school year is drawing to a close.

As usual we have a range of clubs, activities and trips going on in and around the school. The Year 3 team have just returned from another successful residential at Beaumanor Hall with the children and staff all present and correct!

There are also tennis, basketball, netball, reading, cooking, history and even a homework club that take place at school. We are always keen to offer as many opportunities as possible to our children, and we pride ourselves in offering a rich and diverse learning journey here in Mawsley. If you would like your child to attend any of these clubs, then please contact the school for further information.

Over the past few weeks, several local artists have been coming in to work with each year group and on the 22nd May we are holding an exhibition at The Centre to celebrate the children's work. All visitors are welcome - please see more information below.

A final good luck wish goes to our current Year 6 children and staff who, have been working very hard in preparation for SATS week. By the time you read this, SATS week will have come and gone and the children can relax a little for the rest of the term. We hope the results reflect the effort that the children have invested.



Mawsley School Community

Arts Exhibition

Thursday 22nd May
3.30pm - 5.30pm

Free Entry!
Official Mayor
Opening!

Live music
from
members of
staff

Local
artists'
work
on show

School and
community
artwork on
display

Parents, siblings,
grandparents and
all members of
the community
welcome!

Refreshments
available

Mawsley News & Views

is brought to you 6 times a year by the MVA. Its purpose is to keep you informed about events and decisions in the village and to provide space for your ideas and views. Don't keep them to yourself! The editor welcomes letters, articles and pictures from Mawsley residents.

The next News & Views is due out on

30th July

Please send your articles etc. to the editor by

Friday 18th July

Pat Rowley

rowleypj@btinternet.com

791881

John Burn **Accountancy Services Ltd** Accountancy and taxation services for Businesses and the Self Employed

I am John Burn - FCMA.
I recently set up my own
business as an
independent accountant
after many years as a
company Finance
Director. I provide a
professional, personal
and convenient service
that fits with your
business requirements
including :-



- Low overheads = low rates for you
- No VAT charged
- Business/home visits at your convenience
- Cheaper start-up costs

Please contact me.

There is no charge for an initial consultation.

Tel: 01536 418424 Mob: 07745 363236

E-Mail john.burn@outlook.com

THE ONLY WAY IS DEBI



I will be
available to do:

- Cut and Blow
drys
- Wet cuts
- Blow drying
- Wedding hair
- foiling
- colouring
- straightening
- perming
- Gents' cuts
- children's cuts

**Offer; £45 for
foils and cut
and blow-dry,
during
February
although
limited days
so get
booking!**



Wedding hair

Available 7 days a week.

***Can do any time to suit
your working hours or
busy schedule.***



The Only Way Is Debi

To book appointments, ring;

07568 383974



The Bathroom Studio Kettering
25 years fitting bathrooms
www.ketteringbathrooms.co.uk
Tel: 01536 410928
Postcode NN15 7LB

**Visit the showroom with over
18 displays, helpful advice
and a design service, supply
only or fully installed.**



Mawsley Book Group

The Book Group celebrated its 10th Anniversary in March, reading 'Fahrenheit 451', which may not have been wholly appropriate as its theme is book burning.

The group was started by Elaine Cawthorne who has now moved to Northern Ireland, but there are still several original members in the group. Over the years we have read a wide variety of books, from 'Lucky Jim' to 'We Need to Talk About Kevin', and from 'The Bottle Factory Outing' to 'Rocket Boys'.

We meet in the evening of the third Wednesday of each month and new members are always welcome. If you would like to join us email cottington616@btinternet.com or phone Tricia on 799487 for more details.

The Last Of The Summer Wine Club

invite you to a meeting

on Friday 30th of May at 7.30 pm in the lounge at the Centre

As a group we have already built the Bike Shed, the Notice board in the Centre, free standing notice boards around the Centre and put up Flag poles by The Centre and on The Green as well as hoisting the flags as and when the dates require them.

What is next? An area of dry standing on The Green with a path leading to a flagstone area around the flagpole, a new display board for the Poppy wreaths and small crosses. Then there is the Eco field with a Garden of Remembrance. Some of these projects will be undertaken in conjunction with other groups. We would like to take on other projects in the village BUT WE NEED MORE HELP from young as well as more seasoned persons.

This village is a **good** place to live and by working together we can make it a **great** place to live. With a volunteer force we can make the project money go a lot further.



HOPE TO SEE YOU THERE

Want to know more? Give me a ring on 799643. Vic Cope.

Linnell Carpentry

Covering all aspects of internal & external carpentry

- Kitchens •
- Sash Window Repairs •
- Flooring •
- Doors •
- Fencing •
- Decking •

1 Packer Road, Kettering, Northants NN15 7RP

Tel: 01536 237615

Mob: 07904 418081

Email: info@linnellcarpentry.co.uk
www.linnellcarpentry.co.uk

Chiropody / Podiatry Appointments

Home visits available

All treatments for your foot problems, including: Corns, Verrucae, Calluses, Ingrown nails, Nail problems, Infections, Flat feet, Fallen arches, Aches & pains etc.

Also biomechanical examinations and orthotics to achieve correct foot alignment and relieve pain in the feet and legs.



For an appointment please contact
 Richard Pullar, (Registered Podiatrist),
 MSSCh. DipPodMed. MBChA

on 01604 880719 or 07734 348178

FREE CALL OUT

NORTHAMPTONSHIRE DOMESTIC
 APPLIANCE SERVICES

REPAIRS, SUPPLY, SERVICE &
 INSTALLATION OF

- GAS & ELECTRIC COOKERS
- WASHING MACHINES
- TUMBLE DRYERS
- DISHWASHERS
- FRIDGES



SPECIALISTS IN:

AEG, ZANUSSI, ELECTROLUX,
 BOSCH, NEFF, CANNON,
 HOTPOINT, AND ALL LEADING BRANDS

FRIENDLY, HONEST SERVICE

PHONE 01536 359596 or
 07963 331302

MAWSLEY GARDENING & WILDLIFE CLUB

Contrary to the article in the last edition of News & Views, Mawsley Gardening & Wildlife Club remains an active village group with the emphasis on "social" gardening activities e.g. visits to places of related interest and holidays etc.

We also support village projects such as bulb planting together with grass cutting at The Centre and our members also provide support to other village groups e.g. Pond conservation and it is our intention to continue with this work.

As a group we have decided not to merge with the proposed new Gardening for All Group but having met with them it is acknowledged that we share the common aim of supporting the village. In this respect it has been agreed that we will combine our efforts on village projects where appropriate.

We welcome new members and if you are interested please get in touch with us.

Pam & Steve Draycott, K 791681

Gardening for All

Thanks to everyone for your support on Sunday 13th April by visiting our 'drop-in-event' at The Centre. We are pleased to say that it was a great success with 60 plus people through the door picking up over 100 packs of poppy seeds. The village should be a blaze of red in the summer to commemorate WW1.

With over 23 people confirming their interest in joining a village gardening group we are delighted to announce 'Gardening for All'. It says what it is, we hope you approve.

In our short survey on the day Monday evenings were voted favourite for meetings so they will be held at The Centre from 7:30 to 9:00 pm every 2nd Monday in the month (with the exception of August and December).

We aim to cover a wide range of subjects that will appeal to all, from the novice gardener to the more experienced and share knowledge of success and failures. With the survey revealing 26% interest in plants, 18% interest in fruit & veg growing and gardening for families these will be our main topics. We will also be touching on the subjects of design, water and wildlife gardening and no doubt much more as we flourish.

Our first meeting is booked at The Centre

7:30 pm Monday 9th June.

We have a **guest speaker**, Richard Kibble of Kettering Borough Council's Parks and Open Spaces department, to encourage us to plant the seeds of growth for **Gardening for All**.

All welcome, bring a friend.

Informal Friendly Informative

For more information contact Paul Richards K 791898

JOHN COLE
LAWNMOWER SERVICES

**SERVICE & REPAIR OF
LAWNMOWERS & GARDEN
MACHINES**

- **LOCAL COLLECTION & DELIVERY SERVICE**
- **OPEN 7 DAYS A WEEK**

**01536 745771**
0795 100 4387
58 Chase View Rd
Geddington

GreenFeat

Garden Design & Construction

- ◆ All types of construction
- ◆ A design to suit your lifestyle
- ◆ Qualified reliable staff
- ◆ Completed gardens can be viewed

.....always high standards

07540 976639

john@greenfeat.co.uk

www.greenfeat.co.uk



The Association of
Professional Landscapers





In the last edition of the News & Views we reported that we had entered our first competition, the Milton Keynes Festival, and gained third place. Two weeks later, a little closer to home, we took part in the Kettering & District Eisteddfod ... and won our class! Given that the choir is only just over a year old and these were the first two competitions that we had entered, we were delighted to have achieved success.

However, as much as we enjoyed revelling in our new found glory, the most valuable aspect of participating in these competitions was the constructive feedback that we received. The feedback from Milton Keynes Festival enabled us to further polish our performance pieces for the Kettering & District Eisteddfod, just as our impromptu performance to the Mawsley Guides before our first competition resulted in some really helpful advice. (They told us to smile more!)

March was a very busy month for us as in addition to these two competitions we went to Stratford-Upon-Avon for a full day workshop where we were singing among 500 people. This was an amazing experience and taught us four completely new pieces in just one day (some of which, incidentally, we shall be performing at our forthcoming concert on 28 June at The Centre).

The choir has continued to grow, attracting new members at the start of this term. Very few of us had sung before joining the choir which just proves you really don't need any previous experience – if you enjoy singing or would like to have a go, then come along and join us on a Thursday evening during term time in the meeting room at The Centre at Mawsley. We are a very varied group of people of all ages who come together to enjoy two hours of singing. In particular, though our bass section is growing, we need more men!



Mawsley Short Mat Bowls Club

ROLL UP! ROLL UP!

Do you get the Monday Blues?
Then join us at The Centre for the game of Bowls.

We meet at 1pm to start playing at 1.15 and we finish before 3.15 so you still have time to pick up your children from school.

Just turn up with some flat soled shoes. We have spare bowls for you to use and your first three Mondays are free.

Come and give it a go and have some laughs.

For more info ring Alan 790820
Alan Pritchard, Club secretary.

We are now working hard towards our first summer concert which will be a joint concert with Polished Brass, with a wide variety of music. If you haven't yet heard your community's choir then please come along and support us on Saturday 28 June – see our poster on page 14 for more details. And if you have already heard us, then please come and listen to us again!

For further details please contact our secretary Frances Allbury on K 790870.

Sing - make friends - spread happiness - Mawsley Community Choir



Why go to the gym after work during the summer when there is an alternative, fun way to get fit right here in Mawsley, outdoors as the sun sets?
We are now playing TUESDAY evenings (7-8pm) throughout the summer
(We also play Saturday mornings, 09.15-10.30am)
'Touch' is a rapidly growing non-contact sport with the emphasis on speed, agility and passing. We welcome all abilities (age 18+). No experience required.
We offer a FREE trial session so no need to commit!

Contact: mawsleytrc@gmail.com - or 



Sponsored by:
Affiliated to:
Finally, congratulations to the squad on beating both Milton Keynes and Cranfield to win the MK tournament on 29 March. Good luck in the Northampton Summer League!

www.mawsleytouchrugby.com

Mawsley Maintenance Man



Jack Den-drijver

jack@mawsley-maintenance-man.co.uk

"For a small repair or regular care!"

call Jack on

07553 371596 or 01536 799076

13 Long Breech, Mawsley,
Northants



OVENCLEAN®

The original oven cleaning specialists

Ovenclean will transform your oven and put the sparkle back into your kitchen!

- ✓ Friendly, professional and reliable
- ✓ Completely safe, eco-friendly cleaning system
- ✓ No fumes, no mess, no bother
- ✓ Removes grease, fat and burnt on carbon deposits from:

- | | | |
|--------------|--------------|----------|
| ● Ovens | ● Filters | ● Hobs |
| ● Grills | ● BBQ's | ● Ranges |
| ● Extractors | ● Microwaves | ● AGA's |

call Richard Joy today to book your oven clean

0800 840 7127/07791748458

www.ovenclean.com



Muddy Boots

PRE-SCHOOL

- We welcome children from 2 ½ to 5 years
- Friendly, experienced, committed & caring staff
- Open Mon - Fri, 8.45 - 15.00 in term time
- Excellent indoor/outdoor facilities
- Government funding & childcare vouchers accepted
- Good Ofsted, with 'outstanding' features

Tel: 01604 781838

Email: muddybootspreschool@gmail.com

Jubilee Drive, Walgrave



www.muddybootspreschool.com

Infant Aquatics

Baby & toddler swimming courses

Small, friendly classes from six weeks to four years. Building life long safety skills using our holistic approach in a fun environment.

Kettering area call 01858 565 713

Wellingborough area call 01933 674 505

www.infantaquatics.co.uk



Mawsley Coffee Club



Philip Hollobone, MP for Kettering came to join us for coffee at The Centre, following the memorable visit to the Houses of Parliament that he arranged for us last September. He shared some fascinating anecdotes about his life in Parliament and answered some of our specific questions about topical issues, such as the benefits, or otherwise, of HS2 to Northamptonshire, and an interesting insight into membership of the European Community. In or out?



Our recent outings have included a visit to Harlestone Garden Centre to stock up on Spring plants for our gardens, and of course, before we returned home, we enjoyed morning coffee and lunch together.

Several of us enjoyed a memorable evening which began with a leisurely stroll around the immaculately maintained gardens of the Old Rectory at Sudborough. Talented members of Oundle School Jazz Orchestras and soloists entertained us with a



foot tapping concert of popular music, in a heated marquee. Even the blackbirds in the garden joined in with the singing at sunset! There was a frost later that evening, but we were kept warm in the carpeted marquee, and there were plenty of glasses wine available and a huge variety of delicious nibbles for our fortification! We wanted for nothing!

A few days afterwards, . . . and a first for our Coffee Club – several members enjoyed a leisurely breakfast together. (Our days of working breakfasts are but a distant memory now!) We visited the newly opened Tea Room at Woodford Mill, on the banks of the River Nene on the Gt Addington/Ringstead road, where we were served our choice of a 'full' English breakfast, a lighter snack of bacon sandwiches, or a plateful of freshly baked croissants. Stacks of toast abounded, with ample butter and jam. We were extremely well catered for and bought some delicious home-made scones home for our tea. (No need for lunch that day!) They also serve light lunches and afternoon teas at The Mill. We may very well return!



This month yet more delicious food awaits as we visit The Manor House in Cottingham Road, Corby, to have lunch prepared and served by catering students at Tresham College. We have also planned a morning for coffee, chat and jammy dodgers at The Centre in Mawsley.

We are currently preparing our Summer programme which includes coach outings. In the Autumn we have arranged to visit a local blacksmith's workshop and are trying to organise a basic first aid session. Throughout the year we aim to have some fun and incorporate sampling local food. We try to balance our programme with coffee mornings, outings to shopping and garden centres, theatres and other places of interest. We are always seeking ideas and suggestions of new places to visit and are fortunate that there are plenty of them nearby. We welcome folk who live in the village and who have retired or are approaching retirement. There's no membership fee, nor any obligation to come to all the events. Most of our members have moved to Mawsley from other parts of the country, although there are just a few locals, i.e. from Broughton and Kettering. Members are invited to join us as and when they please and are able . . . and their busy diaries permit.

Phone Molly and John on K 790 781 or Jean and David on K 799 490 for more details and dates of Coffee Club events.

What a difference two months make! Since our last walk sightings of summer visitors confirm spring has certainly arrived. Locally the call of the Cuckoo has been reported, but not yet heard by either of us.

Overnight rain cleared to bright sunshine shimmering on the spring green leaves of the trees and bushes. Entering Mawsley spinney by the top gate we immediately noticed a wonderful mixture of birdsong. Above the distant song of Blackbird and Skylark were the unmistakable sounds of some of our native finches. Pairs of Chaffinch called from their likely nest sites in the hedges whilst from the trees we heard and saw foraging male Bullfinches with bright rose-red underparts contrasting spectacularly with the dense white blossom. A small flock of Goldfinches danced by with their canary like liquid twitter. These colourful finches are now a common sight with increasing numbers visiting gardens across the country. Sadly the numbers of Greenfinches has dropped in recent years due to a disease, however it is good to report that in some parts they are making a comeback.



Bullfinch



Goldfinch



House Martin

Around the centre of the spinney a Swallow casually flitted by swerving and weaving to take a flying insect on the wing. Swallows and House Martins arrived in Mawsley on cue from Africa in mid April, a little earlier than last year, no doubt encouraged by the milder weather conditions.

Not only birds but butterflies and buzzing insects were enjoying the bright sunshine with Small Tortoiseshell, Orange Tip and Brimstone butterflies making appearances along with a variety of hover-flies and bees.

Hedgehogs have emerged from hibernation leaving their calling cards around the village. Mawsley's gardeners can relax a bit now knowing that they will receive a little help with pest control in the flower and vegetable beds.

Whilst our pond continues to look clean and healthy with newts making it a child's pond dipping paradise we have not yet seen evidence of frogs or toads spawn – has anyone spotted any yet?

Finally in the coming weeks and months watch/listen out for:

- Young mammals
- Birds nesting
- Cuckoo calling
- The 'Yaffle' of a Green Woodpecker (loud laughing sound heard in the spinney several times)
- Muntjac Deer in the Spinney (Sighted here in the past. Best times to spot are dawn and dusk)

Our circuit took us along Old Gorse Way where, on a loop, there are at least three remarkable flowering shrubs that are at their best at this time of year. The first is the vivid (almost unreal) blue of the ceanothus. This plant is easy to grow, if a slow starter. The best specimens appear to benefit from not being hacked about too much, so make sure you plant them with plenty of room.

The second is an example of a rhododendron. The one we saw is bright orange/red. Normally, you will not see them growing in Mawsley, since they like acid soil conditions but by digging in generous quantities of ericaceous compost at planting time and feeding with an acid fertiliser thereafter success is almost guaranteed. (People may have noted the purple flowering thick wild stand of rhododendron along the A508 at Kelmash).

The third is a lemon yellow tree peony – I suspect the only one in Mawsley - incidentally, in the same garden as the aforementioned rhododendron. All the experts say that, once a tree peony is established, it should never be pruned because it will sulk and die. However, I know that the owners of this particular garden slash it back every year to no ill effect.

Space does not permit much more, except for Les to have a rant about Garden Centres and their complete irresponsibility towards those to whom they sell tender bedding and vegetable plants. In particular we saw groups of lobelia, geranium, runner bean and tomato plants which had taken on the appearance of boiled spinach. The reason? Two nights of heavy frost about the first of May! Frost sensitive plants like these need protection and those customers who don't know should be warned before they waste their money.

A little further afield our local Ospreys have returned again to Rutland Water from overwintering in West Africa. Last year 5 breeding pairs produced 14 fledged young. Lyndon Visitor Centre on the south of the reservoir is well worth a visit.

www.ospreys.org.uk



What is a Credit Union?

They are savings and loan cooperatives, where members pool their savings to lend to one another. This is done in a 'not-for-profit' way, so the cash is only used to run the services and reward the members, and NOT to pay outside shareholders like most other financial institutions.

How Can We Help?

If you are struggling to secure banking facilities to pay your bills then the Credit Union can help you with accessible and low cost banking regardless of your financial history.

If you are looking to save money or hoping to apply for a low cost loan in the future, then the Credit Union could help too.

The Credit Union can help you to take control of your money by encouraging you to save what you can, and borrow only what you can afford to repay.

Contact Details

The Credit Union is open Monday - Friday, 9am - 5pm in our Kettering Customer Service Centre

☎ 01536 534 247

@ creditunion@kettering.gov.uk

The Council joins forces with East Midlands Credit Union to assist customers to set up basic bank accounts to pay their Council Tax and other bills

My Rent ☒ School Uniforms ☒
Council Tax ☒ Appliances ☒
Christmas ☒ My Home ☒
My Holiday ☒ **SORTED**



Kettering
Borough Council

Look after someone? Who looks after you?

Northamptonshire
Carers

National Carers' Week 9th – 15th June 2014

If you care on a regular basis for a parent, child, partner, friend, neighbour or other relative who is physically or mentally ill, has a physical or learning disability, has a drug or alcohol problem or who is elderly or frail – then you are a Carer.

Did you know that there is lots of support available to you? To find out how you can access information, advice and support around your caring role, such as Sitting Services, Support Groups etc. at our Rural Information Bus which is coming to you in Barnwell Court, Mawsley on

Wednesday 11th June 2014 between 1pm and 2pm

Further Carers Information can be obtained from the countywide, Carers Support Line Monday – Friday between 9.30am and 4pm on:

Tel: 01933 677907

Email:

carers@northamptonshire-carers.org

Website:

www.northamptonshire-carers.org

Housing Benefit, Council Tax Support Drop in Surgery here on:



27th May 2014

17th June 2014

8th July 2014

11 am - 12 noon

**In the Bar Lounge, The Centre
Mawsley**

Advice given on Welfare Reform and how it may affect your household, how to claim, benefit entitlement, reporting changes in circumstances and any other council issues

Kettering
Borough Council

Kettering Car Service Volunteer car scheme

Do you need help getting to medical appointments?

The Kettering Volunteer Car Scheme is run by Shires Community Services at Wellingborough. Volunteer drivers will take people to doctors, dentist, optician and hospital appointments, and also hospital visiting. There is an annual membership fee of £18.50 and a booking fee of £1.00.

Contact number: 01933 272735

Email: info@shirecommunityservices.org.uk
www.shirecommunityservices.org.uk

Could you volunteer as a driver?

Same contact details as above.

Mawsley works – Milestones Achieved

Roads

Taylor Wimpey is pleased to report that the village's roads are now all substantially

completed and operational. Minor works and repairs will continue over the next few months as the road network and lighting is upgraded to current adoptable standards for Northamptonshire County Council.

Contractors Griptrak have done an excellent job for Taylor Wimpey and we have received letters of commendation for their work and communication with residents. Taylor Wimpey will continue to maintain the roads, footways and lighting on our development phases until formal adoption is achieved over the next two years. During this time Taylor Wimpey will be working towards completing the necessary legal agreements required with the adopting authority.

Sewerage network

We are pleased to announce Anglian Water has adopted the second pumping station in Hawthorne Avenue – this is a significant milestone as the village's entire foul water system has now been adopted and vested by Anglian Water. The whole storm drainage system has also been placed on to formal maintenance with Anglian Water.

Public open spaces

We are pleased to report that 10 formal public open spaces in Mawsley, comprising a total of 12 acres of land, have been transferred to Kettering Borough Council, which is now responsible for their long-term maintenance.

To report issues or discuss any matters relating to public works at Mawsley Village, please contact:

Taylor Wimpey's Regional Project Manager Chris Leeson on 0116 281 640



1st Mawsley Rainbow Unit

Good News!

Two new volunteers, Nikki Horn and Joanna Loomes, have come forward to take over the Rainbows when Teresa Gable 'retires' this summer. So this lively group will be able to continue into next year.

The unit is full until September but contact rainbows@hotmail.com to go on the waiting list for a place.

Thank you to Teresa for the work she has done for Rainbows over the past two years and good luck to the Brownies in their search for new leaders - see back page.

Mobile Cycle Repairs



Mint Cycles

Wheelie good for your bike!

www.mintcycles.co.uk

A Quality Service by Trained & Insured Mechanic - Using Only Quality Parts

On-line Sales & Spares
On-line Cycling Kit

Bike Servicing & Repairs
Mobile Service Available
We offer Collect & Return
Wheel Building
Wheel Repairs & Truing
Custom Bike Builds
Instruction on Bike Care



Why Not Try Our Collect & Return Service

Email: sales@mintcycles.co.uk
Office & Workshop - 01933 779628
Mobile Workshop - 07791 610727

Mint Cycles, PO Box 7667, Rushden, NN10 1BB

www.doorstepbaking.co.uk



Baking Parties

Cupcake decorating

Pizza making

Includes party food

From only £12.50
per child

Fancy something different for your child's birthday party? Let us do all the hard work! We will provide all the equipment and ingredients, working with your guests to make their own party food. Our parties are suitable for children aged 4 years and upwards. You provide the venue and guests. We provide the rest!

We also sell
handmade party
baking bags!



Only £2.50

includes a
personalised
message

Visit www.doorstepbaking.co.uk for more information or call Cheryl or Steve on 01536 331598

By Professor Ed Case

27



1st Mawsley Brownies Unit

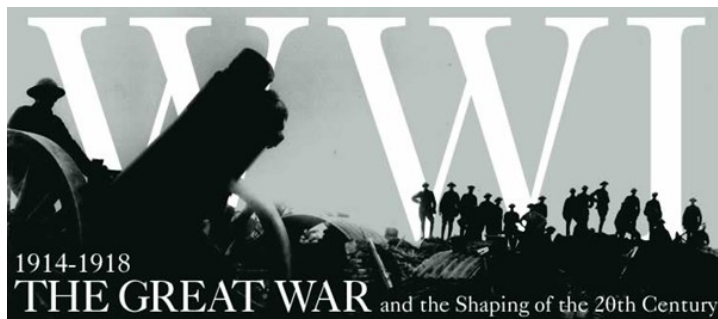
URGENT - Leaders needed

New leaders are needed for 1st Mawsley Brownies to continue. We have 20+ girls enjoying all the different activities organised by the existing leaders, but unfortunately those leaders will be standing down at the end of July 2014 due to personal commitments.

If you think you would like to be a co-leader for the pack, **please contact Sarah on 01536 799684**. If we can get 2 or more leaders - the different tasks can be divided making it easier on the individuals.

If NO volunteers come forward the pack will have to fold. It would be a real shame to leave Mawsley village without a Brownie Pack!

PLEASE THINK ABOUT VOLUNTEERING - As the wise old Brownie once said 'Many hands make light work!'



The Great War Centenary Remembrance takes place in August. Thankfully, Mawsley does not have any direct military personnel connections with the conflict. However, we would like to hear from and feature any village resident who may have a family record of parent, grandparent, great grandparent or distant relative involved in that conflict. This may have been discovered through recent ancestry research or passed down from family records. If you would like to share this with News & Views, please contact Tom Sanders on:

t.sanders01@btinternet.com or 07836 254252

Mawsley News & Views
is printed by



01536 533275

Mawsley Villagers Association (MVA) mva@mawsleyvillage.co.uk

Chair: Rob Bailey 790557
Other positions vacant

Mawsley Parish Council pc@mawsleyvillage.co.uk

Chair: Cllr. Richard Barnwell 07885 431520
Vice Chair: Bob Littler 791447
Clerk: Diana MacCarthy
mawsleyclerk@tiscali.co.uk

The Centre @ Mawsley

Tel: 799528
www.thecentreatmawsley.co.uk
hugh@thecentreatmawsley.co.uk

Mawsley Medical 791300

Mawsley Contact Details

**Neighbourhood Watch Village
Co-ordinator** Christine McIvor
chrismcivor@hotmail.com

Mawsley Church
Rev'd Canon Brian Withington
K 791373 revdbrian@uwclub.net
Anthea Cane (Ch. Warden) 07596022525
anthea76@hotmail.co.uk

Northamptonshire County Council
Cllr. Jim Hakewill 01858 467686
jhakewill@northamptonshire.gov.uk

MP Philip Hollobone
0207 2198373 or 07979 850126
hollobonep@parliament.uk

Mawsley CP School 799182
Headteacher: Mrs Elaine Wright

Taylor Wimpey
Chris Leeson 0116 281 6400

Kettering Borough Council
Cllr. Jim Hakewill 01858 467686
jimhakewill@kettering.gov.uk

Cllr. Cliff Morton
cliffmoreton@kettering.gov.uk

Community Development Officer
Tim Bellamy 534355
timbellamy@kettering.gov.uk

Mawsley News & Views Editor
Pat Rowley 791881
rowleypj@btinternet.com

**Next News & Views will be out on
30th July 2014**

**Copy date is Friday 18th July
Adverts and newsletter items to**

Pat Rowley Tel: 791881 rowleypj@btinternet.com