



# Mawsley News & Views

September/October 2014

This summer in Mawsley



*Above and left:*  
**Mawsley Mother Muckers**  
Seen here before and at  
the end of their  
Mudderella experience.  
*See page 17 for the muddy  
bits.*

*Above:* Residents assemble on The  
Green for the dedication of the  
Memorial. *See page 15.*

*Below:* Lots to talk about at the Charity  
Dog Show. *See page 9.*



And to round off the summer in Mawsley  
there is the wedding of the year.

Steve and Claire both give lots of their  
time to the village, for which we are  
grateful, and we join their family in  
wishing them all the best for the future.



**Claire Bentley & Steve Thorpe**  
**19th September 2014**

*Have a wonderful wedding day, we hope all  
your dreams come true.*

*Love from all your family & friends xx*



## Homes urgently required in Mawsley

Sales and enquiries through the roof. Desperately need more properties of all types for waiting buyers.

Call **Ray Jacobs**, your local property consultant for Horts Estate Agents, now for a free, no obligation valuation.



Office: 01536 790118

Mobile: 07970607085

Email: [ray.jacobs@horts.co.uk](mailto:ray.jacobs@horts.co.uk)

## 'This is a fantastic development and a really good community'

If you tuned in to Channel 4 recently they are the words that you will have heard Kirstie Allsop from Location, Location, Location say about Mawsley. Now in its 20th series, the show has helped people up and down the country in their quests to find new homes.

For the new series, we were very lucky to be contacted by the show's producers, who needed Ray's expert advice for a couple due to be featured and who were looking for a property in the Northamptonshire area.

We were happy to oblige and arranged a viewing for one of our wonderful properties we had on the market in our fantastic village. Ray spent time with Phil and Kirstie discussing the housing market both now and in the future.

Kirstie had some really positive things to say about our village, which she shared with our property viewers and those watching at home, saying that Mawsley was a fantastic development, had a really good community and was very successful!

The episode is still available to watch on 4 on Demand (4oD), or if you want to go straight to where Mawsley is featured in the programme, you can find the clip on our Facebook page.

Don't forget, for our latest news and property listings, 'like' us on Facebook. We also feature top tip videos from Ray himself, interesting properties from around the world and latest stories on the housing and property market locally and throughout the UK.

Finally, remember you can call us anytime for a chat about all of your property needs, we are always happy to help.

### Emma and Ray Jacobs Horts Estate Agents



**Find us on Facebook at: Ray Jacobs - Horts Property Consultant**  
Personal service from the moment we meet you to the moment we move you.



the centre at

Mawsley

Web: [www.thecentreatmawsley.co.uk](http://www.thecentreatmawsley.co.uk)

Facebook: The Centre at Mawsley

Twitter: @centre\_mawsley

Phone: 01536 799528

I hope you all had a great summer. It's been a busy time for The Centre and I would like to start by thanking Vic Cope and the Last of the Summer Wine Club for their sterling work in decorating the main entrance hallway. It has made a massive difference to the feel of the place.

We have also spent a lot of time giving The Centre a good "spring" cleaning and my thanks go to Sue and Deanna for their efforts in bringing it back to a good standard.

The Bar has been busy with regular Film and Quiz nights, the Friday Family Fun Nights and a number of parties and weddings in the function room. A number of the Fun Nights had to be cancelled due to the poor weather and we will spend some time reviewing how successful they were when planning for the forthcoming year.

September sees the launch of two new regular monthly events; Tea, Cakes and Music @ TCAM and Karaoke. The first afternoon Tea, Cakes and Music is on Friday 12<sup>th</sup> September from 2pm until 4pm. It is free entry and you can come along for a chat with friends, enjoy a tea, a coffee, a slice of cake and sing along with Jef Hatton, playing goodtime jazz and classic songs of yesteryear. The first karaoke evening will be held on Friday 19<sup>th</sup> September from 7.30pm so come and join us for a good old sing song. Further dates are booked for October and you can see these in the What's On section.

The children's Halloween party is booked for Friday 31<sup>st</sup> October and tickets will be available from Friday 5<sup>th</sup> September from The Centre priced at £5 per head to include entry, disco, buffet and entertainment.

Best wishes  
Hugh



### For details of all events happening at The Centre

- ♦ see page 13 for 'What's On'
- ♦ telephone 01536 799528 or
- ♦ look at our website  
[www.thecentreatmawsley.co.uk](http://www.thecentreatmawsley.co.uk)



#### ACUPUNCTURE CLINIC

Acupuncture treatment can help with:

Digestive problems, Pains/backache/  
sciatica, Stress/anxiety/depression,  
Asthma, Diabetes,  
Colds, Bronchitis, Night sweats,  
Headaches/migraines, Fatigue,  
Addiction,

#### And many other symptoms and conditions

For more information and an appointment please contact

Richard Pullar  
01604 880719  
07734 348178  
[richardjpullar@gmail.com](mailto:richardjpullar@gmail.com)

### Kettering Domestic Cleaning

0845 117 4444

Don't do your dirty work. We can do your Domestic Cleaning professionally! !

Cleaning your house after a long day at work is probably the last thing you need. You deserve to come home & find that everything is clean, tidy and welcoming. Kettering Domestic Cleaning is a reliable team of efficient, honest & hardworking Cleaners with years of professional experience in housecleaning for domestic residences. We can do a one-off clean or a weekly or fortnightly schedule to suit you.

Call us now on our 24 hour helpline **0845 117 4444** to discuss your domestic cleaning needs - we will be happy to make a home visit to provide a tailored quotation.

# India 2 Mawsley



## Contemporary Indian & Bangladeshi Restaurant & Takeaway

OPEN 7 DAYS INCLUDING BANK HOLIDAYS  
5pm - 11pm

Due to the success of our new restaurant we  
regret that we no longer make deliveries.  
Takeaway collections continue as usual.

**TEL: 01536 791108/791018**  
**www.india2mawsley.com**  
**2 BARNWELL COURT, MAWSLEY**

## Lucy's Nails

Gelish gel nails  
Gel tips available  
Everlasting polish  
New colours available



Prices  
Hands £15  
Toes £10

Offer for September  
Hands and toes £20

Your local gel nail technician based at  
74 Hawthorn Avenue, Mawsley, NN14 1TH  
Or in the comfort of your own home  
Call or text Lucy Wheeler on 07525645679  
Email: wheeler952@btinternet.com  
www.facebook.com/lucywnails

Gift Vouchers Now Available!!!

## THE ONLY WAY IS DEBI



### Offer:

**£45 for  
foils and  
cut and  
blow-dry,  
until the  
end of  
October.**



Wedding hair

I will be  
available to do:

- Cut and Blow  
drys
- Wet cuts
- Blow drying
- Wedding hair
- foiling
- colouring
- straightening
- perming
- Gents' cuts
- children's cuts

**Available 7 days a week.  
Can do any time to suit  
your working hours or  
busy schedule.**



Find us on:  
**facebook.**

The Only Way Is Debi

To book appointments, ring:

**07568 383974**

*hate oven cleaning?*

## OVEN REVIVE

*Oven cleaning at its best*

DOMESTIC & COMMERCIAL

- OVENS
- HOBS
- EXTRACTORS
- MICROWAVES

*Please call Paul*

07545 254975

01536 237079

paul@oven-revive.com

***£5 off with this advert***



# Mawsley Villagers Association

Despite having been involved with Mawsley Villagers' Association for just over a year now, my admiration of the tireless commitment of a band of volunteers remains undiminished. They would be embarrassed if I mentioned any of them by name but they know who they are and, no doubt, so do many 'News and Views' readers. Much of the things that make Mawsley such a pleasant place to live haven't come about by chance - but are down to the resolve of a dedicated few. It's that word 'few' that I'll come back to later, but the pond, the play areas, the memorial on the green and so on are not random developments. They are part of the unique character of Mawsley and are there because of Mawsley residents.

As 'News and Views' readers, you too are Mawsley residents. The Mawsley New Year's Honours List showed that there are hundreds who have contributed to village initiatives. But the 'few' I referred to earlier are the movers and shakers who attend meetings, generate new ideas and make a positive contribution to the future development of the village. For example, what should become of the 'pub' site now that it has been more or less cleared? How can the eco-meadow be further developed? What else could The Centre at Mawsley offer its visitors?

At MVA/TCAM meetings we regularly debate new suggestions. Unfortunately, they are generated by a small group of directors. We often conclude our debate by recognising a need to seek the views of the wider community.

And this is where you come in. If you have any thoughts, no matter how small scale, please get in touch, (my contact details are on the back of this newsletter). Every day, I read on Mawsley's Facebook page about village issues. Where appropriate, this could be developed into 'what can be done?'. I would be delighted to hear your thoughts on the things you would like for your village.

Mawsley recently received awards in the Northamptonshire 'Best Village' competition. What can you do to help us build on that success? I look forward to hearing from you.

Rob Bailey  
Chair, MVA

## **Firework Night**

**Saturday 8th November**

As Summer draws to a close it is time to think about November and fireworks / bonfires.

For those of you who missed last year's Firework Night we had a super display together with bonfire and it was a great night.

### **Help needed**

Preparations for this year are already underway but as ever it all depends on people putting a little time in to help.

We need:

- help with the preparation on the day
- crowd marshals in the evening
- people to sell raffle tickets

If you are willing to help please could you either send me an email or contact me on my home phone—see below.

**All offers of help would be very much appreciated.**

Thank you

Martin Bentley

**Email:** [bentley\\_m1@sky.com](mailto:bentley_m1@sky.com)  
**Tel:** 799644

## **Youth Club**

Youth Club meets every Wednesday evening in term time from 6.30—8.30pm at The Centre. Entry is £2 per child. There is a Tuck Shop.

We really could do with some more helpers, even on a casual basis, or to organise a one off activity. Most of us are there every single week, but with up to 50 children on some nights we can find we are restricted in our activities because we don't have enough helpers. If you are an adult who is willing to help out then please contact Vicky Waine on 07525 488906 to find out more.

## **Baby & Toddler Group**

Thursday mornings 9.15 - 11.00 am  
during term time

in the Main Hall at The Centre

£1.50 for the first child and 50p for additional children.

We welcome all parents/guardians and their children from newborn to 4 years.



Contacts:

Anthea Cane (07596 022525)

Krista Alford (07742 601100)

If you would like to get more involved with the MVA or TCAM Management team you are welcome to attend their meetings which take place one after the other usually on the first Sunday in the month at 5pm. The MVA minutes are posted on the Mawsley Village website.

# Mawsley Parish Council

Firstly my apologies re my article in the last News & Views; I said the finance documents were on the website but unfortunately I was being rather previous and at that time they were not. They are now.

Those documents are:

- A full list of every item of expenditure and income for 2012-13, in a format (thanks to David Allbury) that can be directly inputted to the Audit.
- A spreadsheet showing, by summary areas, our budget for 2104-15 and expenditure to date. This will be updated each month.

Plus we have now added:

- A timetable for setting the budget for 2015-16.

That timetable starts sooner than you might think; in early November, as it has to be completed by mid-January. The Parish Council is acutely aware that it sets a substantial precept for the village. It is in all our interests to make sure that not only is it spent wisely but that it is also spent on activities that the village wants or needs.

So if you look at our expenditure and if you have any questions or suggestions then please let us know; by the December Parish Council meeting (on the 15<sup>th</sup>) to ensure that we can consider it for next year.

Related to that is the Best Village competition. Yes we want to win it next year but winning for winning's sake is not really the point. The competition is all about how we live and enjoy life as a village community, about the facilities we have and about how we help each other, both as individuals and via groups. So, what else can we do? Of course it may cost something, at least to set it up, but that is why I mention it here. If there is something on your mind let us know so we can consider it for next year's budget.

## Neighbourhood Plan

I also mentioned last time that we are considering formulating a Neighbourhood Plan. A Neighbourhood Plan establishes general planning policies for the development and use of land in a neighbourhood, covering where new homes and offices should be built and what they should look like.

Note it says "where" they should be built, not "whether". The Neighbourhood Plan has to be consistent with the broad approach of the Local Authority's housing plans. So given the Borough Council's draft intentions to add up to 60 more houses to Mawsley at some point in the future it does make sense to be in a position to influence the details of that decision.

The Parish Council wishes to work with other members of the community who are interested in, or affected by, the neighbourhood planning proposals to allow them to play an active role in preparing the Plan.

However, having said all that, it is a rather lengthy and complex process. We do have offers of help from Broughton Parish Council, who are well down the track of completing theirs, and the Borough Council has a statutory duty to help too.

It's early days yet and we haven't decided quite what to do, but my personal view is that if we do go ahead the village as a whole must be involved and it not all left to the Parish Council.

If you think you would like to be involved please register your interest by contacting the Clerk, Diana MacCarthy ([mawsleyclerk@tiscali.co.uk](mailto:mawsleyclerk@tiscali.co.uk); 790573).

Bob Littler  
Chair  
Mawsley Parish Council

## Chiropody / Podiatry Appointments

### Home visits available

All treatments for your foot problems, including: Corns, Verrucae, Calluses, Ingrown nails, Nail problems, Infections, Flat feet, Fallen arches, Aches & pains etc.

Also biomechanical examinations and orthotics to achieve correct foot alignment and relieve pain in the feet and legs.

For an appointment please contact  
Richard Pullar, (Registered Podiatrist),  
MSSCh. DipPodMed. MBChA

on 01604 880719 or 07734 348178



## JOHN COLE LAWNMOWER SERVICES

### SERVICE & REPAIR OF LAWNMOWERS & GARDEN MACHINES

- **LOCAL COLLECTION & DELIVERY SERVICE**
- **OPEN 7 DAYS A WEEK**

**01536 745771**

**0795 100 4387**

**58 Chase View Rd  
Geddington  
NN14 1AQ**



**Mawsley Parish Council is pleased to have co-opted Kevin White as a new Parish Councillor. Here he introduces himself.**

My wife Trish and I have lived in Mawsley for 10 years now and love it here!! And my son and his family moved last year from Surrey to Mawsley also. I am a keen cook, enjoy walking in the Lake District and cycling around the beautiful countryside surrounding Mawsley.

I am 62 years old and retired in 2013 from my position as Commercial Director of a Kettering Security Hardware Company where I worked for 22 years.



I am experienced in environmental design and Crime Prevention, related mainly to the built environment and window and door specification and performance especially.

Holding an 'Advanced Certificate in Environmental Design and Crime Prevention' from Oxford Brookes University this involves designing out crime at the planning stage of new housing developments. This qualification is also held by some Police Crime Prevention Design Advisors.

Working closely with Local Authorities, Housing Associations and the Police Secured by Design team I feel I can bring this experience to Mawsley Parish Council and help, for example, with issues surrounding Article 4 restrictions on windows, doors, conservatories etc. I also have previous experience dealing with road adoptions and open space having worked with Barratt Developments and Fairview Homes in the past.

## Parish Council Meetings

These are usually held on the third Monday of the month in the committee room at The Centre at the **new start time of 7pm.**

Mawsley residents are welcome to attend and are entitled to introduce any issue at the beginning of the meeting.

Meeting minutes and forthcoming agendas are posted on the village noticeboards and on the website [www.mawsleyvillage.co.uk](http://www.mawsleyvillage.co.uk)

The next meetings will be on:

20th October  
17th November



**"We believe that your time is precious. Enjoy every moment life has to offer, without compromise."**

We are fully insured and CRB checked for our customers' peace of mind.

We are experienced, friendly, trustworthy and honest people with an exceptional eye for detail and a love for what we do.

If you would like a regular or one off clean, call us today.

**Becky: 07598242808**

**Ruth: 07788555168**

**Email: [rubexcleaningsolutions@Hotmail.co.uk](mailto:rubexcleaningsolutions@Hotmail.co.uk)**



## MAWSLEY COMMUNITY PRIMARY SCHOOL

### PRIMARY SCHOOL ALLOCATIONS

**If your child turns 4 before 31st August 2015 it is time to apply for their primary school place.**

The most convenient and secure way to apply is online is at: [www.northamptonshire.gov.uk/admissions](http://www.northamptonshire.gov.uk/admissions). Here you will also find an on-line version of their guidance booklet, 'Applying for a Primary School Place in Northamptonshire for September 2015' which you are advised to read before applying.

**School places are not automatically allocated.** You must apply for your child's school place even if:

- You have an older child already at your preferred school
- You have put your child's name down at your preferred school
- You live in the linked area
- Your child attends a linked nursery

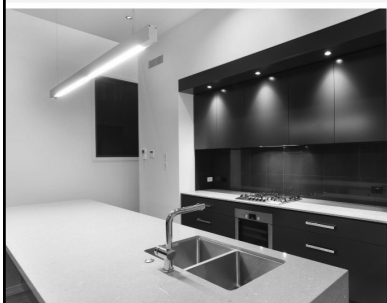
**The closing date for applications is Thursday 15th January 2015 at 5.00 pm.** Parents will be informed of their allocated school by Northamptonshire County Council on Thursday 16 April 2015.

Mawsley Community Primary School will be running tours of the school for prospective parents during the late Autumn. If you haven't already registered your interest please contact the school and you will be put on the mailing list for further information about applying for your place and dates of the scheduled tours.

**Please contact the school office on 01536 799182 or email [kathrynb26@mawsleycpschool.northants.sch.uk](mailto:kathrynb26@mawsleycpschool.northants.sch.uk)**



Kitchen &  
Bathroom  
Specialists



#### Kitchens

Designed for you, with your lifestyle  
and priorities in mind.  
From a small swap to a new extended design,  
we can take care of every little detail!



#### About PMA

We have a saying, NOTHING IS IMPOSSIBLE!

A positive, mental, attitude to your budget,  
time frame and your home.

We take great care and look after you for 2 YEARS AFTER,  
with a free call out warranty!

Good old fashioned service included in our price.

All organised, designed and arranged with a feminine touch.



#### Bathrooms

Clean lines, lovely warm  
lighting and a bathroom to  
relax in, we source, design,  
and fully install, so you can  
relax from day one.

Rookery View, Mawsley NN14 1TR

t: 01536 799 076 m: 07553 371 598 e: [info@pma-uk.co](mailto:info@pma-uk.co)  
[www.pma-uk.co](http://www.pma-uk.co)





*Megan Spring at the centre of operations*



*Amy & Josh  
Den-drijver  
who helped  
throughout  
the day*

Editor: Organising an event on this scale is a big undertaking—so thank you Megan for your effort 2 years running and for giving Mawsley such a great day.

## *Charity Dog Show....Sunday 17<sup>th</sup> August.*

Despite the inclement weather, the 2<sup>nd</sup> Mawsley Dog Show, organised and run by Megan Spring, was well attended by enthusiastic owners from Mawsley and the surrounding area, all eager for their dogs to win a prize, as well as attracting a crowd of supporters keen to watch and to shop at the variety of stalls.

The event was organised by Megan Spring in support of Hounds for Heroes charity whose purpose is to provide specially trained assistance dogs to injured and disabled men and women of both UK Armed forces and Civilian Emergency Services. For more information on Hounds for Heroes go to [www.houndsforheroes.com](http://www.houndsforheroes.com)



Message from Megan: Massive thanks to P.M.A for sponsoring the show, my sister Lucy Spring for making all the cakes for the cake stall, Barbara & Alan Pritchard for doing the tombola and my family for all their support. Also a big thank you to everyone for attending and making the day a big success. I raised £700.00 :-)

# **The Men's Room**

**Modern & Classic Barbers**

**01536 618968**

**We offer great hair cuts tailored to you and great customer service . Free parking ,tea , coffee. Xbox for the kids Located next to La Fitness/Tesco, Kettering**



**Opening hours**  
**Monday.....9:30-6:00**  
**Tuesday.....9:30-6:00**  
**Wednesday.....9:30-6:00**  
**Thursday.....9:30-7:00**  
**Friday.....9:30-6:00**  
**Saturday.....8:30-4:00**  
**Sunday.....10:00-4:00**



# Mobile Cycle Repairs



**Mint Cycles**

**Wheelie good for your bike!**

[www.mintcycles.co.uk](http://www.mintcycles.co.uk)

**A Quality Service by Trained & Insured Mechanic - Using Only Quality Parts**

On-line Sales & Spares  
On-line Cycling Kit

Bike Servicing & Repairs  
Mobile Service Available  
We offer Collect & Return  
Wheel Building  
Wheel Repairs & Truing  
Custom Bike Builds  
Instruction on Bike Care

**Why Not Try Our  
Collect & Return  
Service**



Email: [sales@mintcycles.co.uk](mailto:sales@mintcycles.co.uk)  
Office & Workshop - 01933 779628  
Mobile Workshop - 07791 610727

Mint Cycles, PO Box 7667, Rushden, NN10 1BB

# plumbing & heating

P. VINCENT

**Reliable Gas Safe Heating Engineer  
based in Mawsley**

- Boiler installations, servicing and breakdowns
- Bathroom installations and general plumbing
- Landlord certificates
- No fees for estimates or village call outs
- References available on Mawsley Facebook

*All work insured, guaranteed and  
delivered with care*

**Call Paul on:  
07838 191617 or 01536 791597**



# ROB PRICE

**Automotive Services**

*Price Automotive Services Ltd*

- **Petrol and Diesel MOTs**
- **Servicing and Repairs to any make, old and new**
- **Full diagnostic service**
- **Air conditioning service and refresh**
- **Clutches, brakes, welding, exhausts, shocks**
- **Free local collection and delivery or run-back service available**
- **For friendly and efficient service or advice please call**

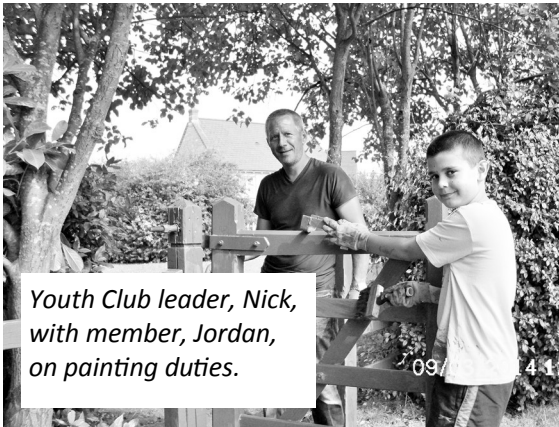
**01536 790901**

146 Northampton Road  
Broughton  
Kettering  
Northamptonshire  
NN14 1NS

Telephone/Fax: 01536 790901  
Mobile: 07850 960350

# Pond Conservation

At the end of July, extensive vegetation was cleared from the pond and the usual tree coppicing, bush and hedgerow trimming was carried out. This was followed up by painting of the fences and dipping platforms which involved our Youth Club.



This is essential work to prevent the pond being totally overgrown and drying out and ending up as it was in 2007—see picture below.



Since that time and with the involvement of a small group of volunteers we have managed to maintain it for the enjoyment of villagers. This has been possible through an agreement with Kettering Borough Council following the adoption of the pond location a few years ago and is supported by Parish Council and MVA.

At one time during the negotiations...the developer was considering filling it in and making it into a roundabout!

This work is entirely voluntary and we need villagers to assist at certain times.  
For further information, contact: [t.sanders01@btinternet.com](mailto:t.sanders01@btinternet.com) mob: 07836 254252

Tom Sanders

## GreenFeat Garden Design & Construction

Is your garden looking tired? Let GreenFeat revitalise your space.

- ◆ All types of construction
- ◆ A design to suit your lifestyle
- ◆ Qualified reliable staff
- ◆ Completed gardens can be viewed  
.....always high standards

**07540 976639**  
**john@greenfeat.co.uk**  
**www.greenfeat.co.uk**



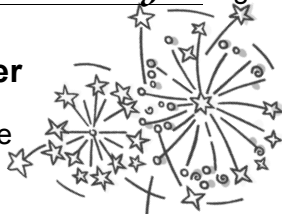
## LIGHT UP THE SKY!

# What's On

It's *Mawsley Bonfire and Fireworks Night* again!

**Saturday 8<sup>th</sup> November**

Playing Field at The Centre



- Gates open 4-30pm
- Our caterers, Coffee @ No 9, will be serving hot food from 4-30pm
- Guy competition judging at 5:45pm  
Open competition - lots of prizes  
So have a go. Who can you make your Guy look like?
- Bonfire light-up at 6pm
- Fireworks at 6:30pm
- Outside Bar

**Tickets are £5 per adult.  
Children go free! (Must be supervised).**

In recent years the doorstep ticket sales have declined following the introduction of additional points of sale for tickets and therefore this year we have decided not to sell them door to door. However **tickets will be on sale at The Centre, One Stop & Coffee @ No9 from 5<sup>th</sup> October.**

### Ticket Promotion

Buy your ticket in advance and get a £1 voucher to be spent on any drink at The Centre on the night.

The other stuff:

- No sparklers please; this is an insurance requirement.
- There will be no room for parking.
- The site will be lit but you may find bringing a torch is helpful.
- Children will not be admitted to the site unless accompanied by an adult.

HOSTED BY DOORSTEP BAKING

**FOOD & DRINK**  
**MAWSLEY FESTIVAL**  
22nd NOVEMBER 2014  
**THE CENTRE 12—5PM**

Showcasing local food  
& drink producers

Entrance £1 per adult Children free

## Gardening for All

### Forthcoming Meetings

**Monday 13<sup>th</sup> October**

Speaker: Ken Evans  
Director of Unwins Seeds  
Topic: New varieties of flowers & veg

**Monday 10<sup>th</sup> November**

Speaker: Stephen Ashpole from the  
Northants Wildlife Trust  
Topic: Wildlife in the garden

**7:30 pm at The Centre  
£2 per person at the door  
(includes raffle ticket)**

**All Welcome**

Meetings also include Plants and Tips for the month.

Informal Friendly Informative

Contact: Paul Richards on 01536 791898 or  
eandp68@gmail.com

## Great Cransley Christmas Craft Market

**Cransley Village Hall**

**Saturday 8th November**

**10.00am - 4.00pm**



**Refreshments & Raffle**

*Quality crafts, locally made*

**Call 01536 790227**





# Childrens Halloween Party

£5

Per child

Ticket includes:

Entry

Buffet

Disco & Games

Friday 31st October

5pm - 8pm



## QUIZ NIGHT

THURSDAY 25<sup>TH</sup>  
SEPTEMBER

8PM START

HOSTED BY  
JAMES WHITTLE

&

HALLOWEEN QUIZ

THURSDAY 30<sup>TH</sup>  
OCTOBER

8PM START

HOSTED BY SIMON  
WISDOM

PRIZE FOR BEST  
DRESSED

## PREMIER LEAGUE FOOTBALL

Check out our TV Schedule  
on the website for what's  
being shown on the Big  
Screen in HD

*Tea, Cake And Music*  
*Friday 12<sup>th</sup> September*  
*Friday 10<sup>th</sup> October*  
*Friday 14<sup>th</sup> November*  
*2pm - 4pm*

*Tea, Cake  
And Music*

*Join us for a  
cup of tea or  
coffee, a  
slice of cake,  
a chit chat  
and some  
great music  
by Jazz  
Manhattan.*

*Good time  
Jazz and  
Vintage  
Ballads.  
<< See Dates*

# Karaoke Night

*Friday 19th September*  
*Friday 17th October*  
*7.30pm - 10.30pm*



Starting Tuesday 16th September

# Kurrry Art at The White Horse

"A new way to enjoy the taste  
of soufusion indian cuisine"

The name 'soufusions' comes from the fusion of spices.  
Our authentic Indian cuisine is freshly prepared every day  
using traditional recipes and locally sourced produce.



**Every Tuesday Night  
6 - 9pm**

**Eat in or takeaway**

Takeaway orders in person only. All dishes freshly cooked to order.

Please note: only the Kurrry Art menu  
will be available on Tuesday evenings

The White Horse at Old  
Walgrave Road, Old NN6 9QX  
Tel: 01604 780147 www.whitehorseold.co.uk



**The White  
Horse presents**

## the POP-UP boutique

Pre-loved clothes and accessories  
Vintage • Retro • Designer • High Street Brands



**Prosecco Cocktails Promotion**

**Sat 4th Oct  
12pm - 7pm**

But you have a beautiful pair of  
heels that you've never worn but  
can't bear to throw away? Or  
that designer dress you can't  
squeeze into any more but want  
it to go to a good home whilst  
earning yourself some cash?

Sell your unwanted items, and browse  
for unique and unusual things at the  
same time. See whitehorseold.co.uk  
for details of how to sell your stuff.

**buy sell love**

The White Horse  
Walgrave Road, Old NN6 9QX  
(01604) 781297 whitehorseold.co.uk



## NEW AUTUMN MENU

starts on Thursday 25th September

### PATRONS



**We need your help** - we are delighted to have  
been shortlisted as Rural Community Pub of the year  
for the Carlsberg UK Northamptonshire Food and  
Drink Awards 2014/15, and we now need to get as  
many votes as possible during the month of  
September. So if you think we deserve it, please vote  
for us either using the form below or go online to  
[www.lovenorthamptonshire.com/food-awards-2014/](http://www.lovenorthamptonshire.com/food-awards-2014/)

NB All voters are entered into a draw for free tickets to  
Peter Pan at the Derngate at Christmas

### Carlsberg UK Northamptonshire Food and Drink Awards 2014/15

Please tick no more than one box in each category to vote for the pub which you  
believe deserves to be named as Northamptonshire's 'Community Pub of the Year -  
Town' and 'Community Pub of the Year - Rural' 2014/15 (sponsored by Pidy UK)

#### RURAL

- ☐ The Red Lion, Bozeat  
☐ The Sun Inn, Hardingstone  
☐ The Sun Inn, Kislingbury  
☐ The White Horse, Old

#### TOWN

- ☐ The Golden Horse, N'ton  
☐ The Lamplighter, N'ton  
☐ The Malt Shovel Tavern, N'ton  
☐ The Woolpack, Rothwell

Your name: \_\_\_\_\_

Your email: \_\_\_\_\_

Your phone: \_\_\_\_\_

Please complete this form and post in the box in the pub or return it to:  
Rachel Mallows, Arch Villa, 23 High Street, Bozeat, Northamptonshire NN29 7NF  
before the closing date of 30 September 2014.

Please note: if you tick more than one box in either category, or if you do not  
provide some form of contact information, your vote will not be counted.

[www.northamptonshirefoodanddrink.co.uk](http://www.northamptonshirefoodanddrink.co.uk)

## FINALIST

**Carlsberg**  
UK

NORTHAMPTONSHIRE

**FOOD  
& DRINK  
AWARDS  
2014/15**

**RURAL COMMUNITY  
PUB OF THE YEAR**



**CAMRA  
LOCAL**



The White Horse at Old  
Walgrave Road, Old, NN6 9QX  
tel: 01604 781297 www.whitehorseold.co.uk



## Dedication of the new Memorial on The Green

The dedication was held on Monday 4th August to coincide with the centenary of the outbreak of WW1.

It was a warm evening and the event was attended by well over 100 residents and visitors who assembled with the music from Help the Heroes in the background.

Proceedings were led by Vic Cope, who had planned and organised the event, the dedication was performed by Molly Shortt and poems were read by Richard Barnwell (representing Cransley Parish Council) and Tom Sanders. The Last Post was played by Mark Hilliard.



*Tom Sanders, Vic Cope (Master of Ceremonies) and Mark Hilliard*

The uniformed youth groups brought their standards and the younger generation was well represented at the symbolic turf cutting at the close of the event.



*The next generation getting 'hands on' at the memorial dedication*

## Remembrance Day—9th November

Remembrance Day will be observed at the Memorial on The Green on the morning of Sunday 9th November. Check Noticeboards for exact time.

### Mawsley News & Views

is brought to you 6 times a year by the MVA. Its purpose is to keep you informed about events and decisions in the village and to provide space for your ideas and views. Don't keep them to yourself! The editor welcomes letters, articles and pictures from Mawsley residents.

The next News & Views is due out on

**19th November**

**Please send your articles etc. to the editor by  
Friday 7th November**

Pat Rowley

rowleypj@btinternet.com

791881

# Kettering

## Borough Council

### Kettering Borough Council Self Serve

View your council tax details online and go paperless

Self Serve is a secure website that Kettering Borough Council customers can use to access their council tax account details, check balances, view correspondence and more. You can now also sign up to receive an email notification when a new bill is ready to view and stop receiving bills through the post.

The advantages of e-Billing are:

- It's faster – you can see your bill as soon as it is available
- It cuts down on postage and mail through your letterbox
- It saves paper and is better for the environment
- Each person named on the bill can receive their own copy
- You will always know where your bill is

To sign in or register please go to [www.kettering.gov.uk/selfserve](http://www.kettering.gov.uk/selfserve)

### More Local Award Finalists

The Carlsberg Food & Drink Awards finals will feature The White Horse, at Old, in its Rural Pub of the Year category. If you have



Jenna & Mary—happy to serve you at White Horse

discovered this recently refurbished and very friendly pub then they would love your vote before the end of this month. (See their advert on page 14 for details.)

Steve & Cheryl Buckles' 'Doorstep Baking' are also finalists—in the Sweet Product category.

Good Luck to both.

### Housing Benefit, Council Tax Support Drop in Surgery here on:



16<sup>th</sup> July 2013  
13<sup>th</sup> August 2013

11.30 am to 12.30 pm

In the Bar Lounge, The Centre Mawsley

Advice given on Welfare Reform and how it may affect your household, how to claim, benefit entitlement, reporting changes in circumstances and any other council issues

**Kettering**  
Borough Council



**IR**

**Ian Ramsay & Co**  
Quality Painter & Decorator

*'Proudly serving Mawsley & surrounding villages for 12 years'*

- Domestic & Commercial
- All aspects of interior painting
- Wallpaper hanging
- Fitting of coving, skirting & dado
- Exterior painting of windows, doors and masonry
- Floor & wall tiling
- Garden fence, decking and furniture painting

For a free, no obligation quote and very competitive rates, please contact Ian:

**01536 790884**

**07899814014**



[www.facebook.com/IanRamsayHomeDecor](http://www.facebook.com/IanRamsayHomeDecor) EMAIL: [ianramsaydecorating@hotmail.co.uk](mailto:ianramsaydecorating@hotmail.co.uk)





# Mawsley Achievers

Stories of Mawsley people who are pushing themselves and making their mark.

Please send in your stories for the next edition.

At the end of August Mawsley Mother Muckers took part in the Mudderella 7 mile muddy obstacle course at Boughton House, Kettering.

Mudderella officially launched in June 2013 in America and is now a global organisation dedicated to raising funds for a host of charities. The newest obstacle series designed by and for women consists of 5 to 7 mile races which have 12 to 15 obstacles designed to test stamina, willpower and strength. Like the vast majority of women's obstacle runs, there is no time clock. It's not about speed, but about teamwork.

The Team (*see front page*) consists of 30 Mawsley Mums and Jim...who is strictly administration support! The Operational HQ is based at Coffee at No 9 and was started by friends and organisers, Heather Jones, Kate Thompson and Ellie Stanton (*picture right*).



The team members have each chosen their own charity or charities to support and these include **Warwickshire & Northamptonshire Air Ambulance, Prostate Cancer UK, British Heart Foundation, Cancer & Leukaemia, Calm [Children's Cancer & Leukaemia Movement, Bliss [Premature Babies] and Cancer Research.**



## 3 Men, 1 Rickshaw, Lands End to John O'Groats



By the time you read this **Matthew Gathercole of The Green, Mawsley, and two of his colleagues should just have finished their eleven day, 1000 mile, rickshaw cycle challenge from Lands End to John O'Groats.**

They are attempting a Guinness World Record in order to raise funds for children with Type 1 Diabetes. They set out on 5th September and you can follow their progress on [Twitter@Rickshaw2014](https://twitter.com/Rickshaw2014).



All donations received will go to Diabetes UK (Registered Charity no. 215199)

**You can support their cause by texting  
MDMT99 £2/£5/£10 (or any other amount)  
to 70070**



**The Team's target was set at £5000 and at going to press had already exceeded £6700! Well done to the Mums!**

For more information on the fund raising and the full list of charities being supported go to [www.justgiving.com/teams/muckers](http://www.justgiving.com/teams/muckers)



# Mawsley Coffee Club

We were saddened to hear of the sudden death of Kathleen Ley, one of our most faithful members who always had a lovely smile and cheery personality. We miss her friendship and we offer our sincere condolences to Kathleen's family.



What a perfect summer it's been for our outings. Our days out have included a fascinating tour of the Guildhall in Northampton, including a visit to the dungeons, a trip to the Boundary Mills shopping outlet at Grantham, a day at the seaside, complete with a fresh fish and chip lunch and a visit to Highclere Castle (Downton Abbey).

A splendid afternoon tea, with 'bottomless' cups of tea and coffee was prepared for us at the village hall in Wadenhoe during the August Bank holiday, after we had enjoyed a pleasant stroll around this picturesque village, situated on the banks of the River Nene. Thankfully, we had elected to visit on the Sunday instead of the rather wet Bank Holiday Monday.

Other planned outings to look forward to include a visit to the James' family blacksmith's shop in Broughton, followed by lunch at the Red Lion, and a 1960s concert at a local theatre when some of our members are preparing to 'jive in the aisles', with a cast that includes Herman's Hermits and the Swinging Blue Jeans.

In October we are looking forward to some basic first aid training at our coffee morning, and in November we have arranged a visit to Rockingham Castle to see their Victorian Christmas displays, followed by tea and mince pies.

We aim to arrange a programme with something of interest to our members and always manage to have some fun, and usually something to eat as well, wherever we go. If you live in the village and have retired or are approaching retirement, why not consider joining us? You'll be made very welcome.

For further details and dates of Coffee Club events and outings, please get in touch with Molly and John on K 790 781 or Jean and David on K 799 490, who will be happy to provide this info.



**Northampton's specialists in UK & airport transfers for personal and corporate clients**

- Airport transfers
- Seaport transfers
- Business travel
- Private jet liaison
- Courier & document delivery
- Wedding cars
- UK & holiday transfers
- Sightseeing tours
- Restaurant & theatre trips
- Up to six passengers and luggage

Fully licensed & insured with Northampton Borough Council

For more information or to book call now on: **07940 072754** or visit **www.voyageruk.com**

'First class service at economy prices'

## FREE CALL OUT

**NORTHAMPTONSHIRE DOMESTIC APPLIANCE SERVICES**  
**REPAIRS, SUPPLY, SERVICE & INSTALLATION OF**

- GAS & ELECTRIC COOKERS
- WASHING MACHINES
- TUMBLE DRYERS
- DISHWASHERS
- FRIDGES



**SPECIALISTS IN:**  
**AEG, ZANUSSI, ELECTROLUX, BOSCH, NEFF, CANNON, HOTPOINT, AND ALL LEADING BRANDS**

**FRIENDLY, HONEST SERVICE**

**PHONE 01536 359596 or 07963 331302**



**SANDRA**

***Clothing Alterations & Repairs***

***Ladies & Gents***

***Also***

***Silk Christening wear***

***Special Occasions Wear***

***Daywear and Handknits for***

***Babies and Children***

7 Brambleside  
Kettering  
NN16 9BH

**01536 521481**



Welcome back everyone! Hope you all had a wonderful summer and are now ready to forge ahead with exciting new pieces to learn and perform with the Choir.

A note for your diary: at Remembrance Sunday on 9th November, on The Green, Mawsley, the Choir is to perform a specially commissioned piece to commemorate the centenary of World War I. We are thrilled to have been given the opportunity to perform this challenging and moving piece and hope many will lend their support by attending this poignant occasion.

We are always keen to attract new members to our friendly, informal Choir. No experience is necessary nor the ability to read music and there are definitely no scary auditions! Everyone is welcome, but especially bassists, so do come along.

Rehearsals are Thursday evenings at The Centre, Mawsley from 7.30 pm - 9.30 pm during term time (7.00 pm - 9.00 pm on Quiz Night which is the last Thursday of the month).

If you would like more information, please contact Heather on 01536 791844.

*Sing - make friends - spread happiness  
Mawsley Community Choir*

Heather Mallinson



## Mawsley Short Mat Bowls Club

ROLL UP! ROLL UP!

Do you get the Monday Blues?  
Then join us at The Centre for the game of Bowls.

We meet at 1pm to start playing at 1.15 and we finish before 3.15 so you still have time to pick up your children from school.

Just turn up with some flat soled shoes. We have spare bowls for you to use and your first three Mondays are free.

Come and give it a go and have some laughs.

For more info ring Alan Pritchard, Club secretary, on 790820



**Inspired by the Mawsley women completing the Muderella challenge recently?**

**Why not get muddy with Mawsley Touch Rugby this Autumn?!!**

Tuesdays 7-8pm (until 30 Sept)

and Saturdays 9.30-10.30am

Minimal contact, no experience necessary, ideal sport for fitness training and great fun, age 18+

New players most welcome

For more details visit [www.mawsleytouchrugby.com](http://www.mawsleytouchrugby.com) or find us on Facebook.

(An additional Mawsley Ladies Touch Rugby session will be starting 6 September, 10.30am)

## Gardening for All

With the unseasonable August weather Autumn seems to have come early. We trust you have all got to grips with your gardens and enjoyed them as that's what gardening is all about.

We are pleased to confirm that 'Gardening for All' had a successful summer when we raised over £100 at the Mawsley Fun Day. This was followed by an enjoyable summer social.

The September meeting featured our new ongoing garden design feature, a spring bulb sale, open discussion and the usual regular topical slots.

We have speakers booked for our October and November meetings (see page 12) followed by our Christmas quiz 'spectacular' in December to close our first year.

Our meetings are held on the 2nd Monday of the month in the committee room at The Centre and are open to all. Please feel free to bring along a friend or two as always.

£2 per person at the door (includes raffle ticket)  
All Welcome

Informal Friendly Informative

Contact : Paul Richards on 01536 791898 or  
[eandp68@gmail.com](mailto:eandp68@gmail.com)

## Mawsley Maintenance Man



**Jack Den-drijver**

jack@mawsley-maintenance-man.co.uk

**"For a small repair or regular care!"**

**call Jack on**

**07553 371596 or 01536 799076**

13 Long Breech, Mawsley,  
Northants



## OVENCLEAN®

*The original oven cleaning specialists*

*Ovensclean will transform your oven and  
put the sparkle back into your kitchen!*

- ✓ Friendly, professional and reliable
- ✓ Completely safe, eco-friendly cleaning system
- ✓ No fumes, no mess, no bother
- ✓ Removes grease, fat and burnt on carbon deposits from:

- |              |              |          |
|--------------|--------------|----------|
| ● Ovens      | ● Filters    | ● Hobs   |
| ● Grills     | ● BBQ's      | ● Ranges |
| ● Extractors | ● Microwaves | ● AGA's  |

*call Richard Joy today to book your oven clean*

**0800 840 7127/07791748458**

[www.ovenclean.com](http://www.ovenclean.com)



## Muddy Boots

PRE-SCHOOL

- We welcome children from 2 ½ to 5 years
- Friendly, experienced, committed & caring staff
- Open Mon - Fri, 8.45 - 15.00 in term time
- Excellent indoor/outdoor facilities
- Government funding & childcare vouchers accepted
- Good Ofsted, with 'outstanding' features

Tel: 01604 781838

Email: [muddybootspreschool@gmail.com](mailto:muddybootspreschool@gmail.com)

**Jubilee Drive, Walgrave**

[www.muddybootspreschool.com](http://www.muddybootspreschool.com)



## Infant Aquatics

### Baby & toddler swimming courses

Small, friendly classes from six weeks to four years. Building life long safety skills using our holistic approach in a fun environment.

Kettering area call 01858 565 713

Wellingborough area call 01933 674 505

**[www.infantaquatics.co.uk](http://www.infantaquatics.co.uk)**





Following the success of our first Pilgrim group last year, we'll be launching another group later in the term. Pilgrim offers a place where people can explore the Christian faith together and see how it can be lived out each day.

Throughout the autumn we'll be meeting for our services, as always, every Sunday at the Centre. Our services last about an hour in a relaxed, informal setting and always include activities for children.



#### Services at The Centre

1st Sunday 10.30am. SPACE. Tea, coffee and bacon rolls  
with children's activities all in the main hall  
2nd Sunday 10.30am Service with children's groups  
3rd Sunday 10.30am All age service  
4th Sunday 10.30am Communion service with children's  
groups

If you would like to find out more about Mawsley church,  
our services or the Pilgrim group then please contact either:

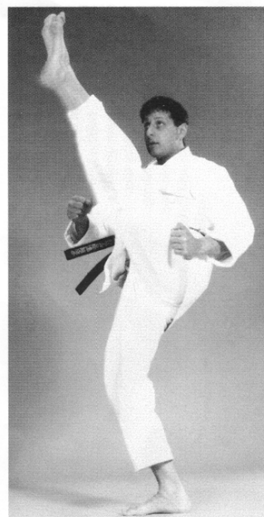
Revd. Brian Withington  
01536 791373 or email [revdbrian@uwclub.net](mailto:revdbrian@uwclub.net) or  
Revd. Nicki Hobbs  
01536 799522 or email [revnicki@familyhobbs.org.uk](mailto:revnicki@familyhobbs.org.uk)

# LEARN THE FASCINATING ART OF KARATE

THE ULTIMATE IN SELF DEFENCE AND FITNESS

**SPECIAL NEW  
BEGINNERS CLASS  
STARTING NOW!  
FREE**

**1st INTRODUCTORY LESSON  
INTERNATIONAL CLUB MEMBERSHIP  
AND BEGINNERS GUIDE DVD**



MONDAY

**22nd**

SEPTEMBER

**FREE 4 WEEK TRIAL BEGINNERS COURSE**

MONDAY 22nd SEPTEMBER 2013 AT 5.30PM  
AND EVERY MONDAY THEREAFTER  
MAIN HALL, THE CENTRE AT MAWSLEY

**HURRY! LIMITED NUMBER OF PLACES**



- \* LEARN TO DEFEND YOURSELF AGAINST STREET VIOLENCE
- \* BECOME FITTER AND MORE SELF-CONFIDENT
- \* SUITS ALL AGES (4 YEARS - 60) & FITNESS LEVELS

THESE CLASSES HAVE BEEN ESPECIALLY DESIGNED WITH THE BEGINNER  
IN MIND SO TO AVOID DISAPPOINTMENT RING NOW TO BOOK YOUR PLACE

All our instructors are Enhanced CRB checked and Tiska is a member of the Governing Body

**01753-882012 or 07885-294418**

To advertise your business in Mawsley News & Views  
please contact Pat Rowley [rowleypj@btinternet.com](mailto:rowleypj@btinternet.com) K 791881

To advertise your business in Mawsley News & Views  
please contact Pat Rowley rowleypj@btinternet.com K 791881



### Bridleway Cattery

Licensed & approved  
cattery in Old.  
Peaceful cottage garden  
with experienced  
proprietor.  
Have peace of mind.  
Viewings welcome

Tel: 01604 781292



### *Hair by Chris*

#### **At Strands**

78 High Street, Broughton

- *Friendly professional service for all the family*
- *Easy parking*
- *Evening appointments available*

**Call Chris 01536 791065**

## **Advanced Loft Ladders**

- Local and reliable with 20 years experience
- Create safe and easy access to your loft
- Providing valuable storage space
- Loft Ladders and folding stairways supplied and installed
- Enlargement of existing loft hatches
- Loft flooring supplied and fitted
- Velux windows supplied and fitted
- Full public liability insurance
- All ladders guaranteed



Call now for your free survey and accurate quotation on

**01604 677999 or 07840 933410**

**[www.advancedloftladders.co.uk](http://www.advancedloftladders.co.uk)**



**The Bathroom Studio Kettering**  
**25 years fitting bathrooms**  
**[www.ketteringbathrooms.co.uk](http://www.ketteringbathrooms.co.uk)**  
**Tel: 01536 410928**  
**Postcode NN15 7LB**

Visit the showroom with over  
18 displays, helpful advice  
and a design service, supply  
only or fully installed.

# Nature on your doorstep

A stroll round Mawsley and district with Les and Paul on 3rd September 2014

## Paul

The day dawned misty and mellow and in the back garden were traces of last night's Hedgehog activity with one or sometimes two spotted most evenings at about 9:30. Walking towards the eco-meadow to meet Les for our stroll, I noticed dew jewelled spider webs in the hedges sparkling in the weak sunshine. It was interesting to note some with Crane Flies (or as we used to call them Daddy Long legs or Googlies) dangling drunkenly. These sights are so evocative of the first day back to school after the seemingly endless hot sunny summer holidays of my youth. So much for reminiscence!

As we ambled down the tarmac path we talked about the freshly mown meadow and the number of wild plant species that Mother Nature has introduced over the last 10 years or so. The annual mowing process ensures germination of the seeds. We spotted some families of Pied Wagtails bobbing in the stubble. As Swallows skimmed over the surface searching out flies, we were

*A Hobby*



reminded of the day before when we were lucky enough to see a Hobby (one of our smallest Falcon species) hunting House Martins over the village. It is mind-boggling to think about the remarkable journey to Africa that lies ahead for these birds with Hobbies following the flocks south feeding as they go. Judging by the numbers of House Martins gathering on the roofs

and wires it's a sure sign migration time is near.

We hear so much about the vast reduction in numbers of wild birds in the UK but we both agreed that it was very clear that Mawsley and District's House Sparrow, Goldfinch, Pied Wagtail, Starling and House Martin population seemed to be doing well. The young sparrows, behaving like naughty school children, and the noisy handsome young Starlings, their nearly adult speckled plumage contrasting with their blond heads, seemed to be everywhere. Goldfinch flocks continue to build as the season changes with numbers in excess of 20 in one group being seen.

On entering the spinney we heard Robins with their short high warbling song letting us know they were aware of our

*Blue Tit*



*Great Tit*



presence. As the mist cleared and the sunshine strengthened the churring trill of Blue and Great Tits was heard as they acrobatically searched for tit bits in the dense foliage.

As the weather changes please don't forget to step up the bird feeding and before you light your bonfires please check for hibernating hedgehogs.

## Les

Paul is bound to mention the gangs of house sparrows which we encountered around Mawsley. Unfortunately, he didn't see the one-in-a-million albino sparrow which I saw in my own garden soon after our walk. It is said that such oddities suffer from being picked on by other birds, but this one seemed to be a right thug – bossing the others around.

Talking of thugs, there is a list of garden plants prepared by the Royal Horticultural Society which are described as "thugs" because they can be a nuisance. Amongst these is the Virginia Creeper – a fiery- red-leaved climber seen commonly on houses in the village and particularly vivid just now. I mention it because some fear that it may cause damage to brickwork and roof areas. As far as I am concerned, Ivy would be much more of a problem, but if you have this eye catching creeper, it might be worth doing a spot of research to put your mind at rest.

Another "thug", which we have not actually seen in the village, but are sure exists, is a climber commonly called Russian Vine or "mile-a-minute". The latter is a perfect description because, once established, it really shifts, smothering everything in its path. It's grown as the answer to householders wanting to quickly cover unsightly features. It has clusters of small white flowers and is truly a swine of a vine. Leave well alone.

It is, of course the season of mists and mellow fruitfulness. Of the latter, we noted that the spinney is yielding a large crop of hazelnuts this year. I read somewhere that most



hazel nuts we consume come from Portugal and this spring there was a frost which did for the nut buds over there. Be prepared for high prices in the shops later. Hoarding like the squirrels might pay off, therefore.

Talking of squirrels, has anyone seen these animals in the spinney? It would appear to be the perfect habitat for them but Paul and I never saw any. Again, on the bounty side, the brambles were heavy with blackberries, in hedges where in previous years they have not been worth a second glance.

## From the editor

Thank you to everyone who has contributed articles, pictures and announcements for this edition, with particular thanks to Tom Sanders who has been very diligent recording and reporting village events. Tom is definitely an indispensable member of the News & Views Team. I'm sure he won't mind me saying, though, that he and I are both of the 'retired' generation and the majority of Mawsley residents are not.

We are very aware that this newsletter needs stories and features that will be of interest to both younger and our youngest villagers. We know that you access news and express views via Facebook and we think that our two mediums complement each other. One is

immediate, easy and wide-ranging: the other is slow and will always miss the moment but its content is well researched, is permanent and available to all.

We would like to explore ways of letting all News & Views readers know what have been the hot topics and opinions on Facebook and also make parts of News & Views available on Facebook. This would be a two way exchange. We 'retired' people are probably not the most suitable people to do this. Could/would you do it, or at least discuss with us what might work?

Please get in touch with offers of help or suggestions. Contact details below.

Pat Rowley, Editor



Mawsley Amateur Dramatics presents:

## Jack and the Beanstalk

on Saturday 6<sup>th</sup> and Sunday 7<sup>th</sup> December 2014

The box office will open in early November – watch out for more details nearer the time.



01536 533275

Printers of  
Mawsley News & Views

Dear Editor

Thanks to the volunteers who cleaned up the village pond - brilliant job.  
Thanks from granddad - who caught nothing, and Nevaeh and Oscar who caught a newt each (and put them back).

Ken Randall



### Mawsley Contact Details

#### Mawsley Villagers Association (MVA)

[mva@mawsleyvillage.co.uk](mailto:mva@mawsleyvillage.co.uk)  
Chair: Rob Bailey 790557  
Other positions vacant

#### Mawsley Parish Council

[pc@mawsleyvillage.co.uk](mailto:pc@mawsleyvillage.co.uk)  
Chair: Bob Littler 791447  
Vice Chair: Cllr. Richard Barnwell 07885 431520  
Clerk: Diana MacCarthy  
[mawsleyclerk@tiscali.co.uk](mailto:mawsleyclerk@tiscali.co.uk)

#### The Centre @ Mawsley

Tel: 799528  
[www.thecentreatmawsley.co.uk](http://www.thecentreatmawsley.co.uk)  
[hugh@thecentreatmawsley.co.uk](mailto:hugh@thecentreatmawsley.co.uk)

**Mawsley Medical** 791300

#### Mawsley News & Views Editor

Pat Rowley 791881

#### Neighbourhood Watch Village

**Co-ordinator** Christine Mclvor  
[chrismcivor@hotmail.com](mailto:chrismcivor@hotmail.com)

#### Mawsley Church

Rev'd Canon Brian Withington  
K 791373 [revdbrian@uwclub.net](mailto:revdbrian@uwclub.net)  
Revd Nicki Hobbs 01536 799522 or  
email [revnicki@familyhobbs.org.uk](mailto:revnicki@familyhobbs.org.uk)  
Anthea Cane (Ch. Warden) 07596022525  
[anthea76@hotmail.co.uk](mailto:anthea76@hotmail.co.uk)

#### Northamptonshire County Council

Cllr. Jim Hakewill 01858 467686  
[jhakewill@northamptonshire.gov.uk](mailto:jhakewill@northamptonshire.gov.uk)

#### MP Philip Hollobone

0207 2198373 or 07979 850126  
[hollobonep@parliament.uk](mailto:hollobonep@parliament.uk)

#### Mawsley CP School

799182  
Headteacher: Mrs Elaine Wright

#### Taylor Wimpey

Chris Leeson 0116 281 6400

#### Kettering Borough Council

Cllr. Jim Hakewill 01858 467686  
[jimhakewill@kettering.gov.uk](mailto:jimhakewill@kettering.gov.uk)

Cllr. Cliff Morton

[cliffmoreton@kettering.gov.uk](mailto:cliffmoreton@kettering.gov.uk)

Community Development Officer

Tim Bellamy 534355  
[timbellamy@kettering.gov.uk](mailto:timbellamy@kettering.gov.uk)

**Next News & Views will be out on**  
**19th November 2014**

**Copy date is Friday 7th November**

**Adverts and newsletter items to**

**Pat Rowley Tel: 791881 [rowleypj@btinternet.com](mailto:rowleypj@btinternet.com)**